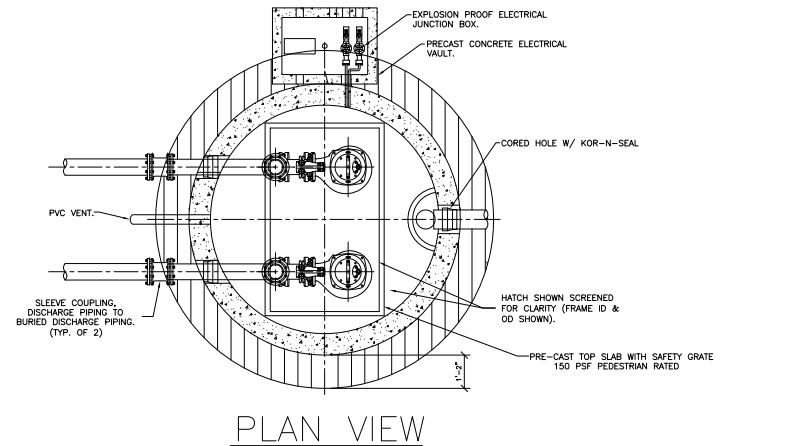


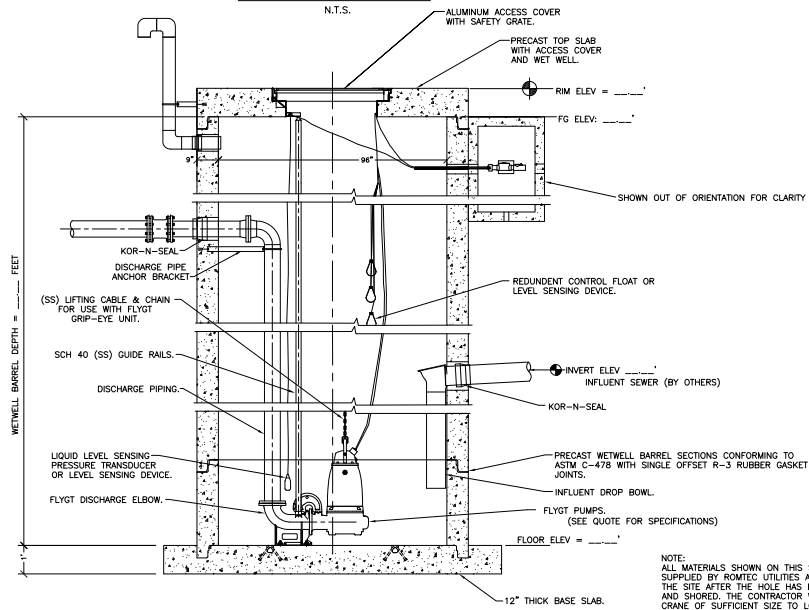
# STANDARD INDUSTRIAL

# DUPLEX-8' WET WELL

NOTE: WETWELL TOP SLAB IS PEDESTRIAN RATED.



PLAN VIEW



8' DIAMETER WETWELL

SECTIONAL VIEW

NOTE:  
ALL MATERIALS SHOWN ON THIS SHEET WILL BE SUPPLIED BY ROMTEC UTILITIES AND DELIVERED TO THE SITE AFTER THE HOLE HAS BEEN EXCAVATED AND SHORED. THE CONTRACTOR WILL SUPPLY A CRANE OF SUFFICIENT SIZE TO LOWER ALL THE CONCRETE PIECES INTO THE HOLE SAFELY. THE CONTRACTOR WILL INSTALL THE WET WELL VALVE VAULT AND METERING VAULT. ROMTEC UTILITIES WILL PROVIDE A REPRESENTATIVE FOR TECHNICAL ASSISTANCE ON THE DAY OF INSTALLATION TO ANSWER ANY QUESTIONS THAT MAY ARISE. THE CONTRACTOR IS RESPONSIBLE FOR ALL PLUMBING AND ELECTRICAL CONNECTIONS AND INSTALLATION. ITEMS NOTED AS "(BY OTHERS)" WILL BE PROVIDED AND INSTALLED BY THE CONTRACTOR. ROMTEC UTILITIES WILL NOT INSTALL ANY OF THE COMPONENTS SHOWN ON THIS PAGE.

NO.	DATE	DESCRIPTION	BY
1			

VERIFY SCALE  
SCALE IS ONE INCH = 10 FEET  
IF ANY PART OF THE DRAWING IS TO BE SCALED PROBABLY  
ESN. --  
DRN. --  
DATE: JULY 2007

**ROMTEC UTILITIES**  
18240 NORTH BANK ROAD  
ROSEBURG, OR 97470  
(541) 496-9678  
FAX (541) 496-0804

LARGE FLOW  
8-10 INCH FORCE MAIN  
8' - SOLIDS HANDLING PUMP  
LIFT STATION DRAWING

SHEET  
1 OF 1  
JOB NUMBER  
RMT. 0000