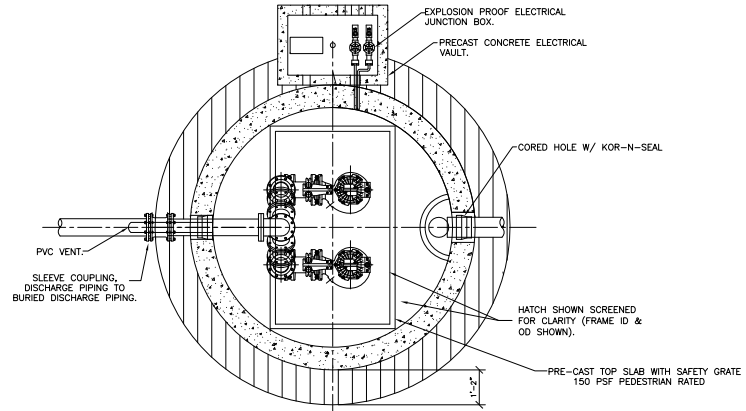


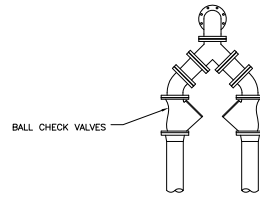
STANDARD STORMWATER

DUPLEX- 8' WET WELL

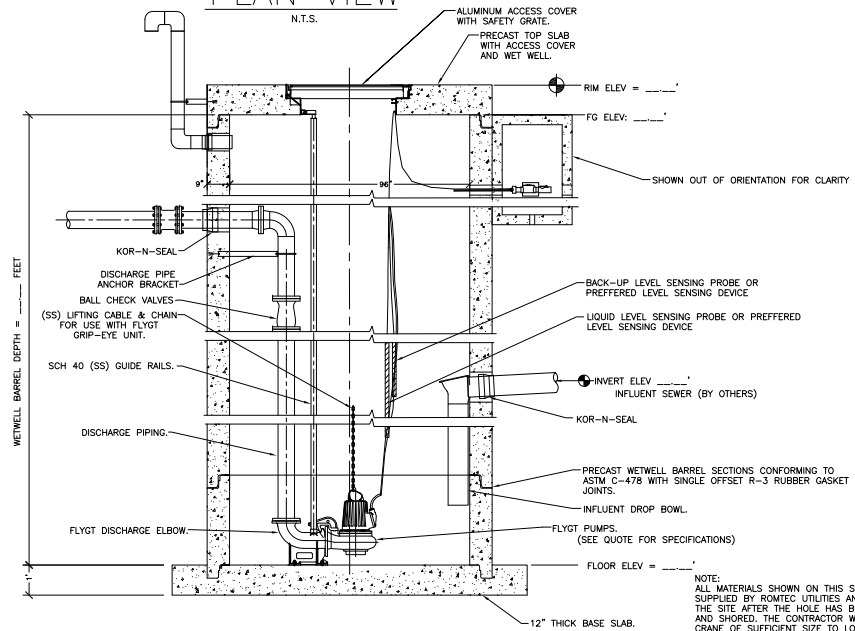
NOTE: WETWELL TOP SLAB IS PEDESTRIAN RATED.



PLAN VIEW
N.T.S.



BALL CHECK VALVES



8' DIAMETER WETWELL

SECTIONAL VIEW
N.T.S.

NOTE:
ALL MATERIALS SHOWN ON THIS SHEET WILL BE SUPPLIED BY ROMTEC UTILITIES AND DELIVERED TO THE SITE AFTER THE HOLE HAS BEEN EXCAVATED AND SHORED. THE CONTRACTOR WILL SUPPLY A CRANE OF SUFFICIENT SIZE TO LOWER ALL THE CONCRETE PIECES INTO THE HOLE SAFELY. THE CONTRACTOR WILL INSTALL THE WET WELL, VALVE VAULT AND METERING VAULT. ROMTEC UTILITIES WILL PROVIDE A REPRESENTATIVE FOR TECHNICAL ASSISTANCE ON THE DAY OF INSTALLATION TO ANSWER ANY QUESTIONS THAT MAY ARISE. THE CONTRACTOR IS RESPONSIBLE FOR ALL PLUMBING AND ELECTRICAL CONNECTIONS AND INSTALLATION. ITEMS NOTED AS "BY OTHERS" WILL BE PROVIDED AND INSTALLED BY THE CONTRACTOR. ROMTEC UTILITIES WILL NOT INSTALL ANY OF THE COMPONENTS SHOWN ON THIS PAGE.

NO.	DATE	DESCRIPTION	BY
1			

VERIFY SCALE
SCALE IS ONE INCH TO ONE FOOT UNLESS OTHERWISE NOTED
IF ANY PART OF THIS DRAWING IS TO BE REPRODUCED, IT SHALL BE DONE AT THE ORIGINAL SCALE PROPORTIONALLY
ESN. --
DRN. --
DATE: JULY 2007

ROMTEC UTILITIES
18240 NORTH BANK ROAD
ROSEBURG, OR 97470
(541)-496-9678
FAX (541)-496-0804

MEDIUM/LARGE FLOW
6--8 INCH FORCE MAIN
8' - SOLIDS HANDLING PUMP
LIFT STATION DRAWING

SHEET
1 OF 1
JOB NUMBER
RMT. 0000