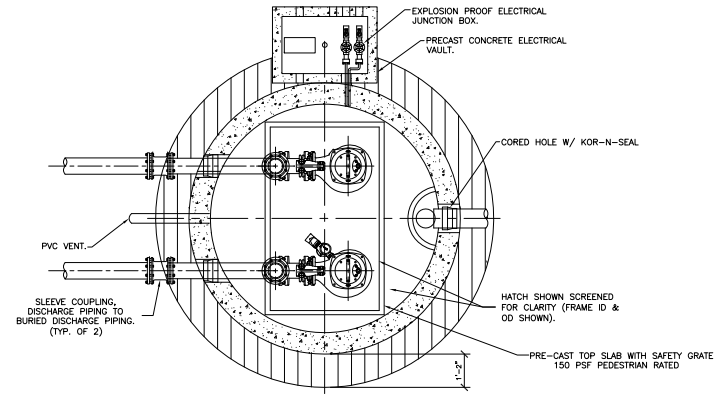


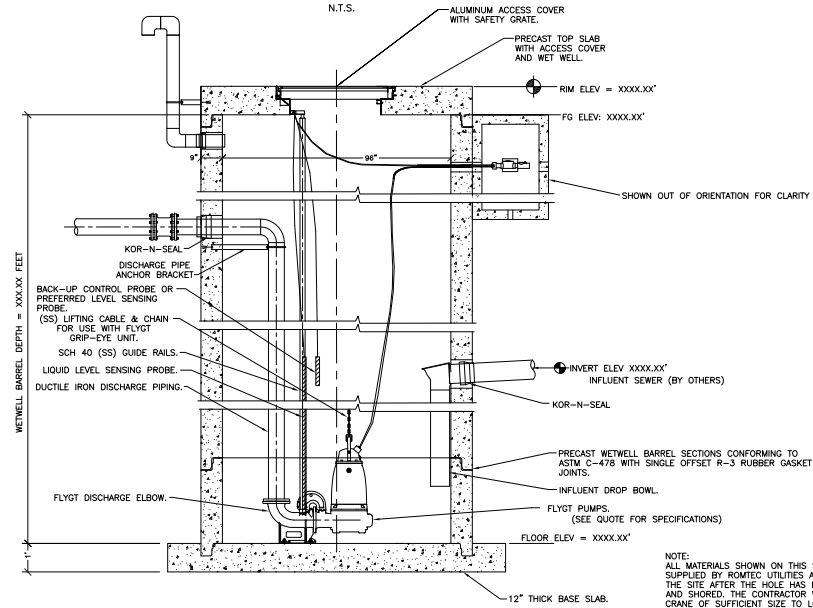
# STANDARD WASTEWATER

# DUPLEX- 8' WET WELL

NOTE: WETWELL TOP SLAB IS PEDESTRIAN RATED.



PLAN VIEW



8' DIAMETER WETWELL

SECTIONAL VIEW

N.T.S.

NOTE:  
 ALL MATERIALS SHOWN ON THIS SHEET WILL BE SUPPLIED BY ROMTEC UTILITIES AND DELIVERED TO THE SITE AFTER THE HOLE HAS BEEN EXCAVATED AND SHORED. THE CONTRACTOR WILL SUPPLY A CRANE OF SUFFICIENT SIZE TO LOWER ALL THE CONCRETE PIECES INTO THE HOLE SAFELY. THE CONTRACTOR WILL INSTALL THE WET WELL VALVE VAULT AND METERING VAULT. ROMTEC UTILITIES WILL PROVIDE A REPRESENTATIVE FOR TECHNICAL ASSISTANCE ON THE DAY OF INSTALLATION TO ANSWER ANY QUESTIONS THAT MAY ARISE. THE CONTRACTOR IS RESPONSIBLE FOR ALL PLUMBING AND ELECTRICAL CONNECTIONS AND INSTALLATION. ITEMS NOTED AS "(BY OTHERS)" WILL BE PROVIDED AND INSTALLED BY THE CONTRACTOR. ROMTEC UTILITIES WILL NOT INSTALL ANY OF THE COMPONENTS SHOWN ON THIS PAGE.

NO.	DATE	DESCRIPTION	BY
1			

VERIFY SCALE  
 SHALL BE ONE INCH TO ONE FOOT UNLESS OTHERWISE NOTED  
 # OF PAGES: 01 OF 01  
 # OF SHEETS: 01 OF 01  
 DESN. AD  
 DATE: NOV. 2007

**ROMTEC UTILITIES**  
 18240 NORTH BANK ROAD  
 ROSEBURG, OR 97470  
 (541)-496-9678  
 FAX (541)-496-0804

LARGE FLOW  
 8" - 10" FORCE MAIN  
 8" - SOLIDS HANDLING PUMP  
 LIFT STATION DRAWING

SHEET  
 1 OF 1  
 JOB NUMBER  
 RMC. 0000