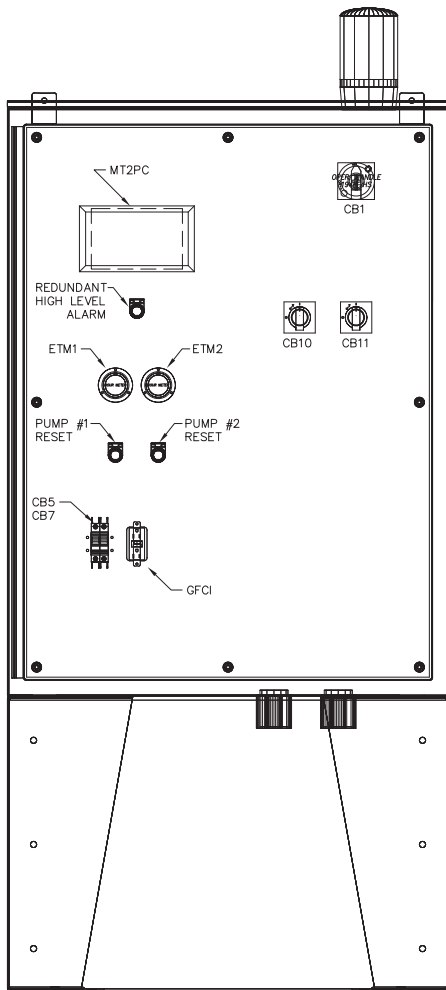
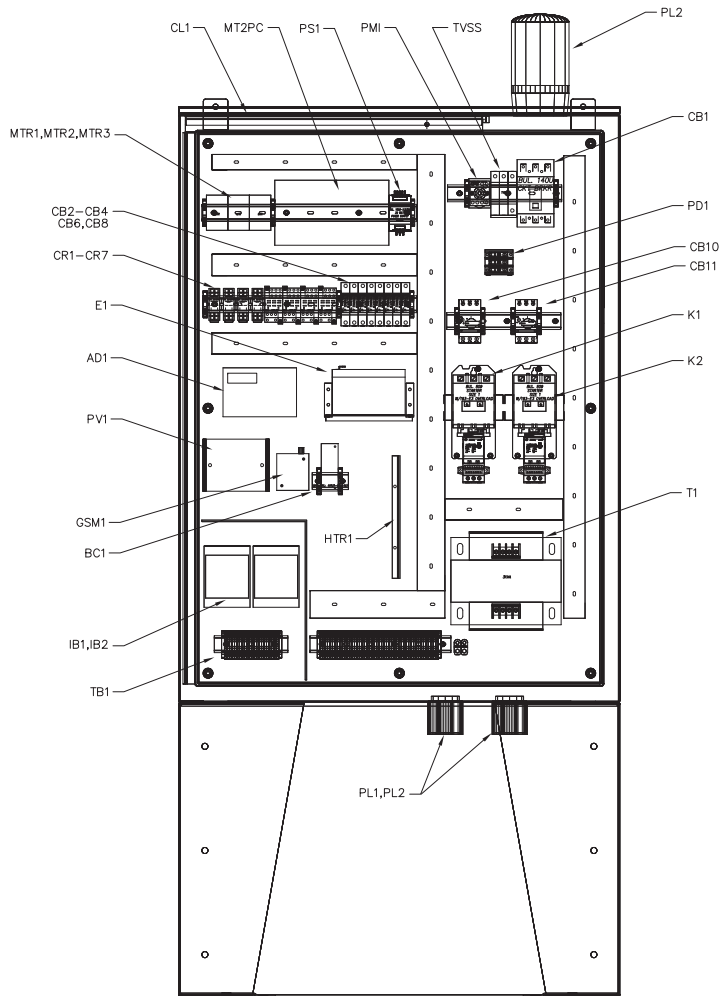


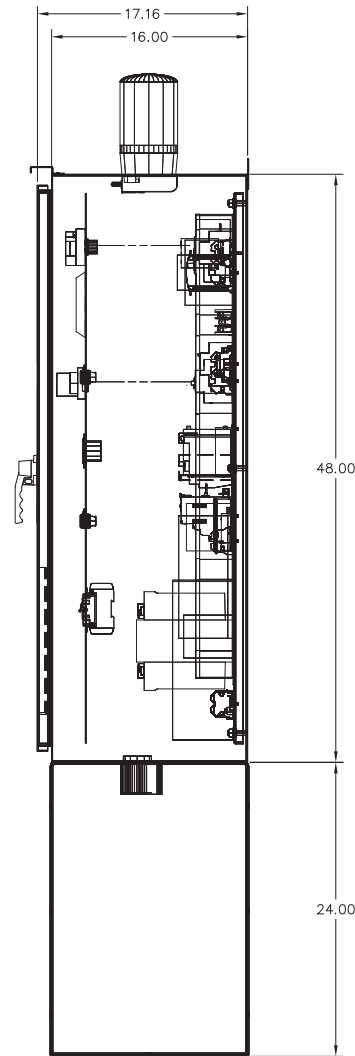
PARTS MUST CONFORM TO APPLICABLE ALLIANCE/INDUSTRY OR WORKMANSHIP STANDARD #112-700



FRONT VIEW
SWING PANEL
(DOOR REMOVED)



FRONT VIEW
(DOOR/SWING OUT PANEL REMOVED)



RIGHT SIDE VIEW

Revision	Release	Dimensions Apply Before Surface Treatment	Tolerances In Inches	Tolerances Unless Otherwise Specified	2 Place Decimal	±.02	3 Place Decimal	±.005	Angles ±1°
1	1018750								

References		BUL. 1000 COMPOSITE ASSEMBLY		FOR ROMTEC		STORM WATER LIFT STATION	
Dr. T. DeHll	Date 11-5-05	Sheet 1	Of 1				
Chkd. T. DEHLI	Date 11-15-2005						
Appd. D.PETERSON	Date 11-15-2005						

THIS PART	REV.
-01	1

P.C.P./E.S.B. AutoCAD