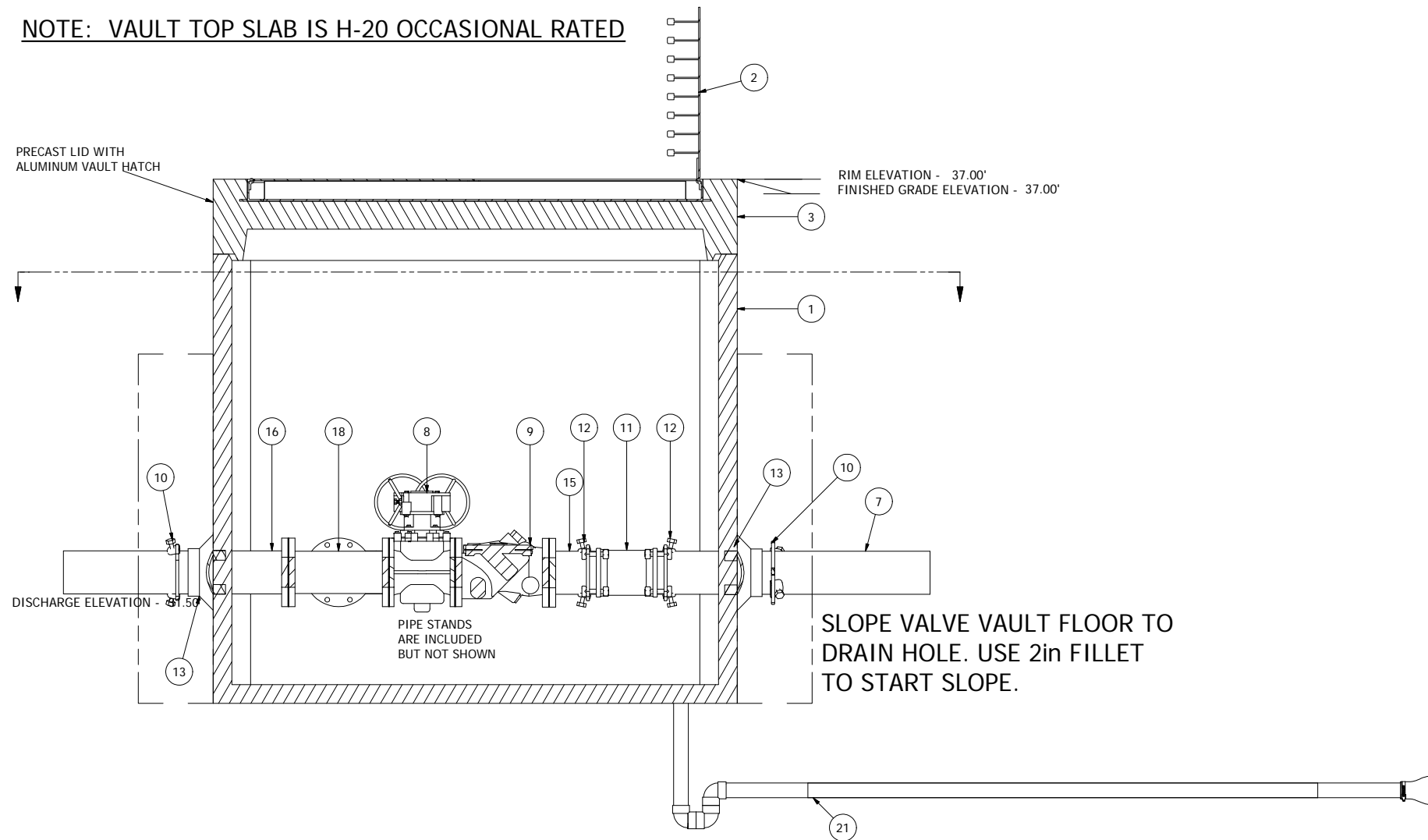
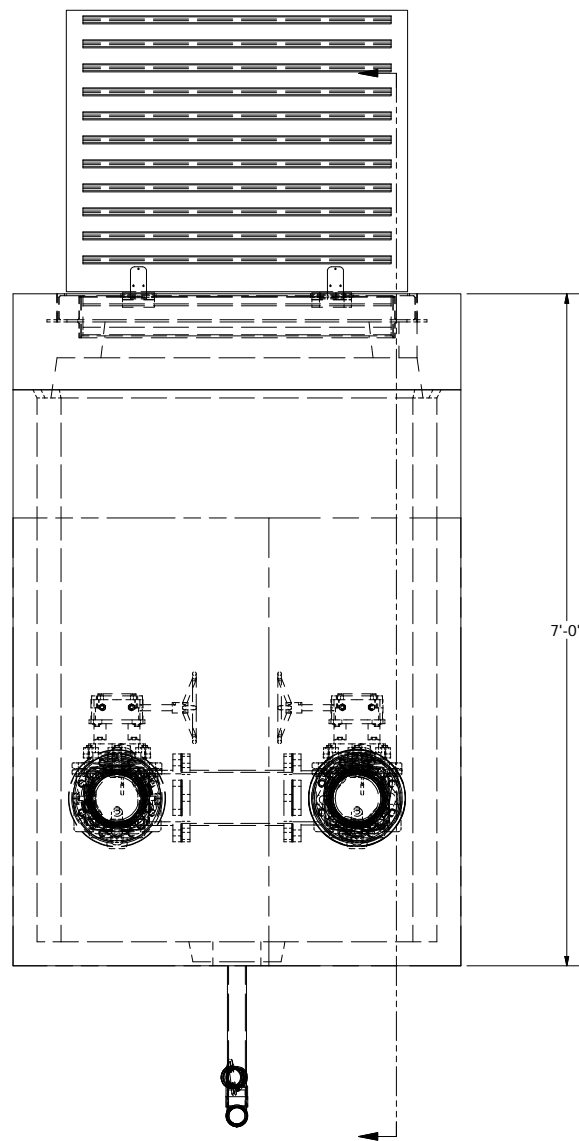


NOTE: VAULT TOP SLAB IS H-20 OCCASIONAL RATED



SLOPE VALVE VAULT FLOOR TO DRAIN HOLE. USE 2in FILLET TO START SLOPE.

© 2011 ROMTEC INC. ALL RIGHTS RESERVED. THESE PLANS AND DRAWINGS MAY NOT BE REPRODUCED, ADAPTED, OR FURTHER DISTRIBUTED, AND NO COMPONENTS MAY BE CONSTRUCTED FROM THESE PLANS, WITHOUT WRITTEN PERMISSION OF ROMTEC, INC.

NOTE: ALL DIMENSIONS AND ELEVATIONS SHOWN ARE NOMINAL DIMENSIONS. IT IS THE RESPONSIBILITY OF THE ON-SITE CONTRACTOR OR ROMTEC UTILITIES CUSTOMER (NOT ROMTEC UTILITIES) TO VERIFY THE ACCURACY OF ANY CRITICAL DIMENSIONS OR ELEVATIONS PRIOR TO SETTING OR INSTALLING ANY EQUIPMENT.

VERIFY SCALE
BAR IS ONE INCH ON ORIGINAL DRAWING
1"
IF NOT ONE INCH ON THIS SHEET, ADJUST SCALES ACCORDINGLY

COMPONENT DRAWING

ROMTEC UTILITIES
18240 NORTH BANK ROAD
ROSEBURG, OREGON 97470
(541) 496-9678
FAX (541) 496-0804

HOS BROS. CONSTRUCTION
UW HUSKY STADIUM
6" VALVE VAULT

SHEET
2 OF 2

JOB NUMBER
RMTC
0000

REV	DESCRIPTION	DATE	APPROV
2	NEW FG AND DISCHARGE ELEVATIONS	12/20/12	NG
1	COMPONENT DRAWING	6-21-12	AD
0	REVISED PER 1/2/13 COMMENTS	1-4-13	AD

REVISION HISTORY