

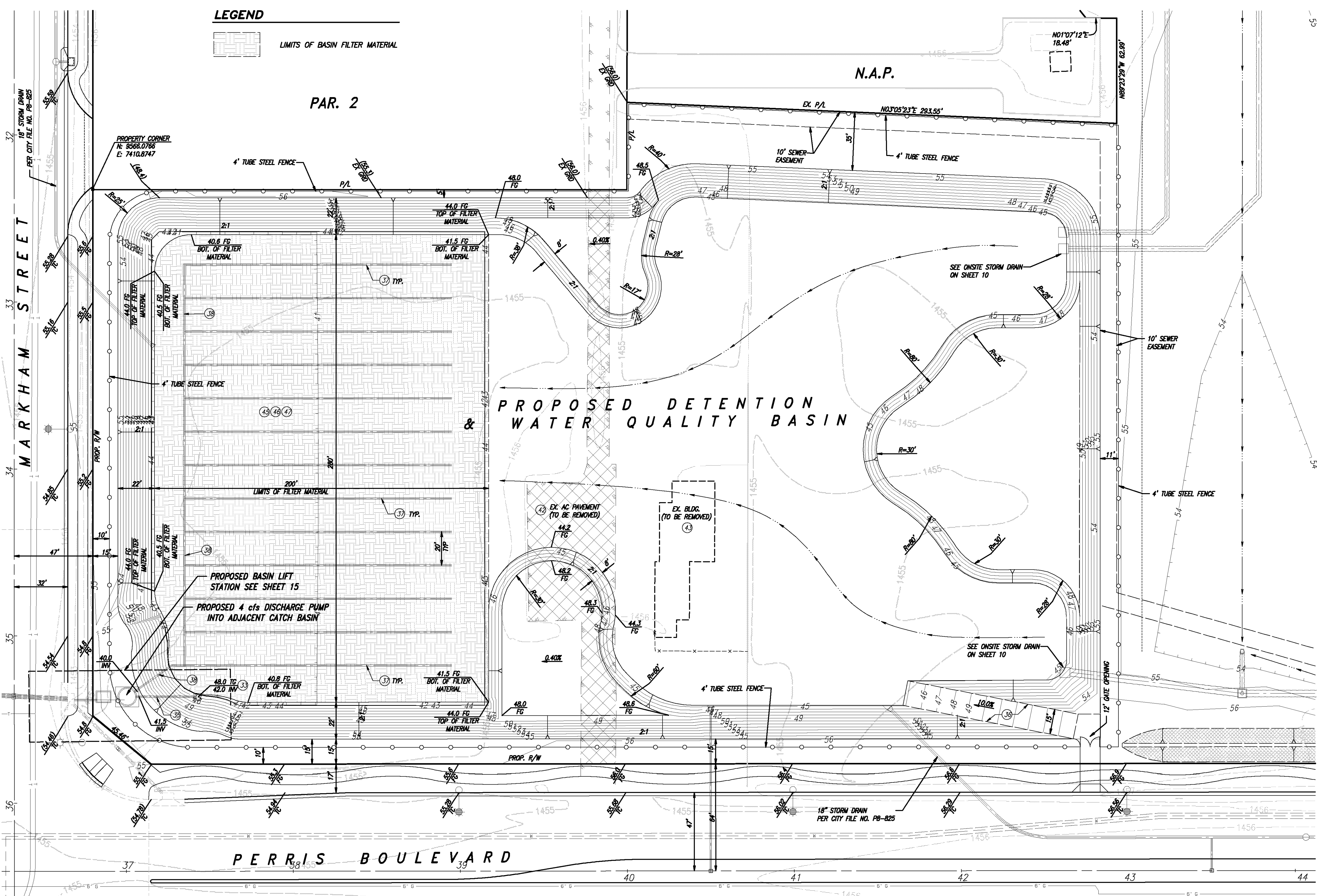
**CONSTRUCTION NOTES**

- (35) CONSTRUCT CONCRETE DRAINAGE INLET TYPE G1 W/ GRATE TYPE 24-9 PER CALTRANS STD. PLANS D73 & D77A AS SHOWN ON DETAIL ON SH. 2
- (36) CONSTRUCT 3" THICK CLASS II BASE MAINTENANCE RAMP
- (37) INSTALL 6" SMOOTHWALL PIPE WITH OPTION 2 PERFORMANCES AND DRAIN GUARD PROTECTIVE WRAP PER ADS SPECIFICATIONS (ADS PART NO. 06570010) OR APPROVED EQUAL
- (38) INSTALL 6" SMOOTHWALL PIPE PER ADS SPECIFICATIONS (ADS PART NO. 06560010) OR APPROVED EQUAL
- (42) REMOVE EXIST. AC PAVEMENT
- (43) STRUCTURE DEMOLITION BY OTHERS
- (45) INSTALL 2" AASHTO #67 GRAVEL (1") PER SHEET 10
- (46) INSTALL 18" SAND LAYER ASTM C-33 PER SHEET 10
- (47) INSTALL 18" AASHTO #57 GRAVEL (1.5") PER SHEET 10

**LEGEND**



PAR. 2



SEE SHEET 9

**DIGALERT**  
 DIAL BEFORE YOU DIG  
 TWO WORKING DAYS BEFORE YOU DIG  
 TOLL FREE 1-800-277-2800  
 A PUBLIC SERVICE BY UNDERGROUND SERVICE ALERT

**NOTE:**  
 WORK CONTAINED WITHIN THESE PLANS SHALL NOT COMMENCE UNTIL AN ENCROACHMENT PERMIT AND/OR A GRADING PERMIT HAS BEEN ISSUED.  
 THE PRIVATE ENGINEER SIGNING THESE PLANS IS RESPONSIBLE FOR ASSURING THE ACCURACY AND ACCEPTABILITY OF THE DESIGN HEREON. IN THE EVENT OF DISCREPANCIES ARISING AFTER COUNTY APPROVAL OR DURING CONSTRUCTION, THE PRIVATE ENGINEER SHALL BE RESPONSIBLE FOR DETERMINING AN ACCEPTABLE SOLUTION AND REVISING THE PLANS FOR APPROVAL BY THE COUNTY.

MARK	BY	DATE	REVISIONS	APPR.	DATE

CITY OF PERRIS  
 APPROVED BY:  
 \_\_\_\_\_  
 CITY ENGINEER  
 DATE \_\_\_\_\_

SEAL-ENGINEER  
  
 ALBERT A. WEBB  
 ASSOCIATES

ALBERT A. WEBB  
 CIVIL ENGINEERS  
 3788 McCRAY STREET  
 RIVERSIDE, CA. 92506  
 PH: (951) 686-1070  
 FAX: (951) 788-1256  
 PREPARED BY: \_\_\_\_\_ R.C.E. NO. C44762  
 DATE \_\_\_\_\_

BENCHMARK:  
 SEE SHEET 1  
 SCALE:  
 H: AS SHOWN V: N/A

CITY OF PERRIS			SHEET NO.
P.M. MAP NO. 33587/D.P. P05-0113			10
PROJECT CAPRICORN DETENTION & WATER QUALITY BASIN			OF 17 SHEETS
FOR: IDI	W.O. 12-0144	CITY FILE NO.	

BID SET Oct 2012  
 6.1.2012.12-0144.DWG & PROJ.Design | 12-0144.dwg 10/17/2012