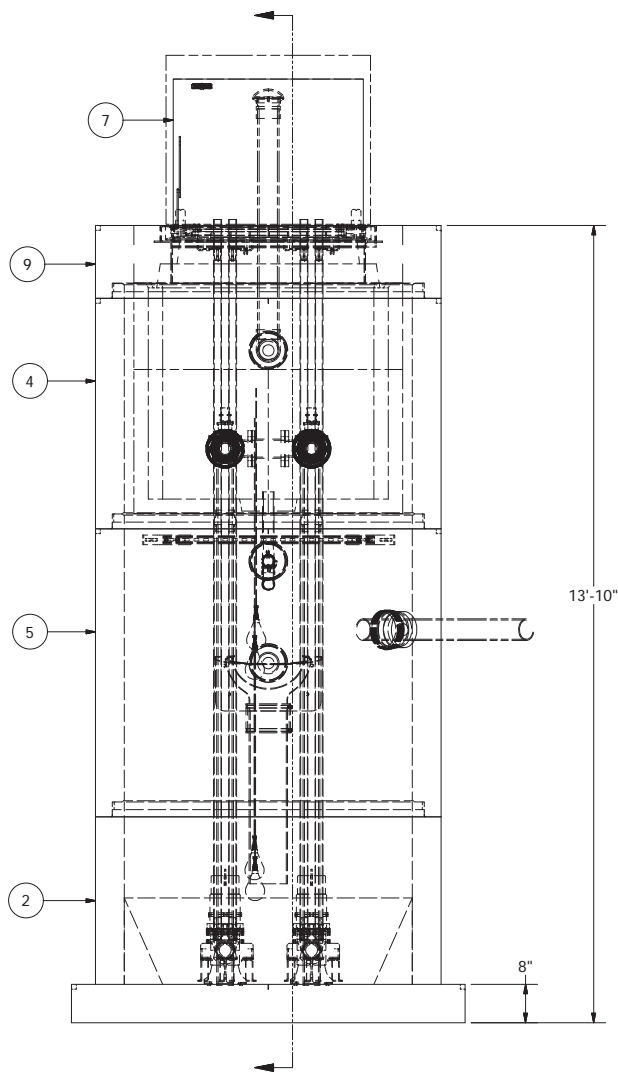


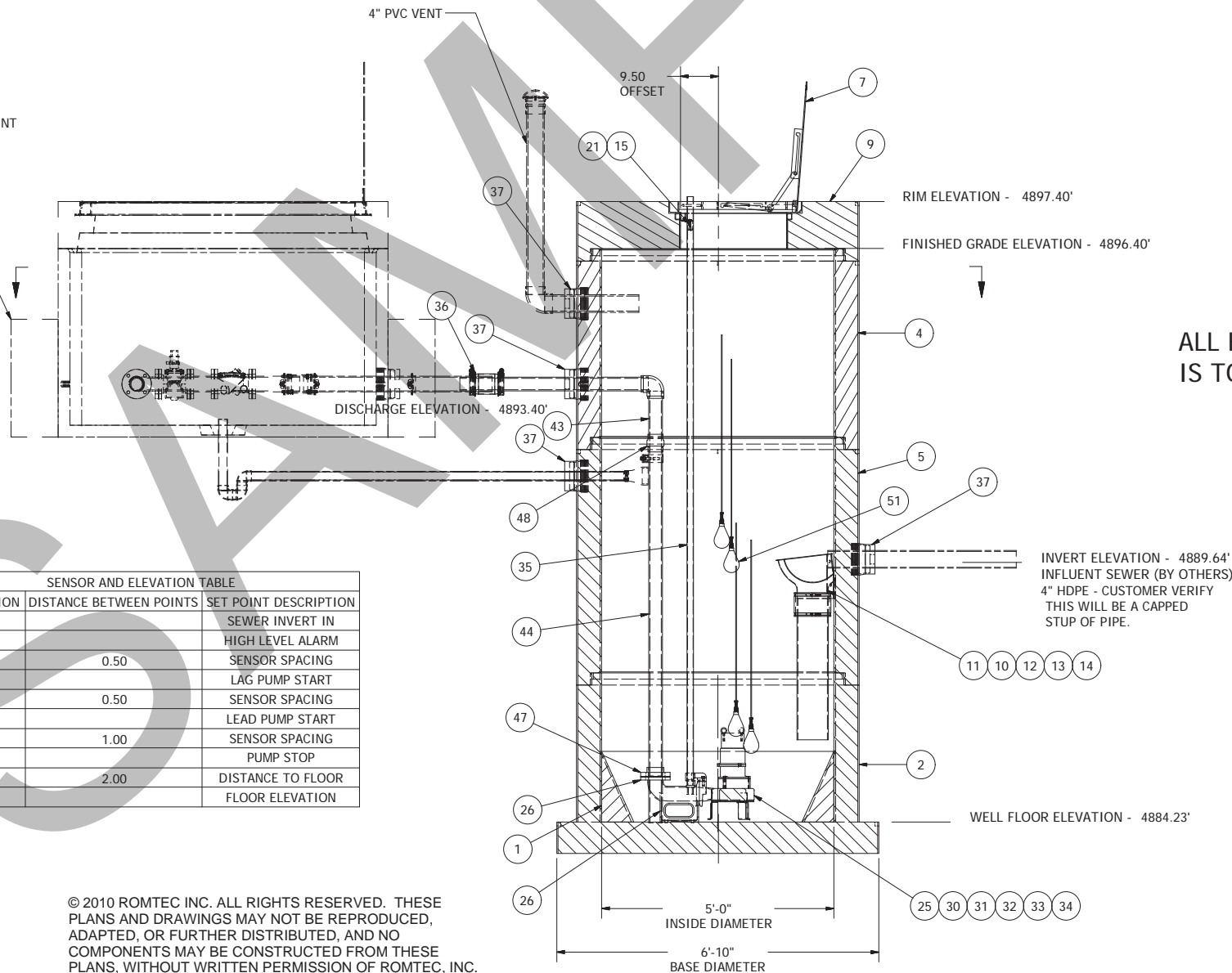
NOTE: WET WELL TOP SLAB IS PEDESTRIAN RATED



12" THICK CAST IN PLACE
CONCRETE THRUST RESTRAINT
COLLAR.
(BOTH ENDS - BY OTHERS)

SENSOR AND ELEVATION TABLE		
LEVEL ELEVATION	DISTANCE BETWEEN POINTS	SET POINT DESCRIPTION
4889.64		SEWER INVERT IN
4888.23		HIGH LEVEL ALARM
	0.50	SENSOR SPACING
4887.73		LAG PUMP START
	0.50	SENSOR SPACING
4887.23		LEAD PUMP START
	1.00	SENSOR SPACING
4886.23		PUMP STOP
	2.00	DISTANCE TO FLOOR
4884.23		FLOOR ELEVATION

© 2010 ROMTEC INC. ALL RIGHTS RESERVED. THESE
PLANS AND DRAWINGS MAY NOT BE REPRODUCED,
ADAPTED, OR FURTHER DISTRIBUTED, AND NO
COMPONENTS MAY BE CONSTRUCTED FROM THESE
PLANS, WITHOUT WRITTEN PERMISSION OF ROMTEC, INC.



ALL HARDWARE IN THE WET WELL
IS TO BE STAINLESS.

NOTE: ALL DIMENSIONS AND ELEVATIONS SHOWN
ARE NOMINAL DIMENSIONS. IT IS THE RESPONSIBILITY
OF THE ON-SITE CONTRACTOR OR ROMTEC UTILITIES
CUSTOMER (NOT ROMTEC UTILITIES) TO VERIFY THE
ACCURACY OF ANY CRITICAL DIMENSIONS OR ELEVATIONS
PRIOR TO SETTING OR INSTALLING ANY EQUIPMENT.

5' DIAMETER WET WELL 3" DISCHARGE PIPING TSURUMI PUMPS

ALL MATERIALS SHOWN ON THIS SHEET WILL BE
SUPPLIED BY ROMTEC UTILITIES AND DELIVERED TO
THE SITE AFTER THE HOLE HAS BEEN EXCAVATED
AND SHORED. THE CONTRACTOR SHALL SUPPLY A
CRANE OF SUFFICIENT SIZE TO LOWER ALL THE
CONCRETE PIECES INTO THE HOLE SAFELY. THE
CONTRACTOR SHALL INSTALL THE WET WELL
(AND VALVE VAULT AND METERING VAULT IF
APPLICABLE). ROMTEC UTILITIES WILL PROVIDE A
REPRESENTATIVE FOR TECHNICAL ASSISTANCE ON
THE DAY OF INSTALLATION TO ANSWER ANY QUESTIONS
THAT MAY ARISE. THE CONTRACTOR IS RESPONSIBLE
FOR ALL PLUMBING AND ELECTRICAL CONNECTIONS
AND INSTALLATION. ITEMS NOTED AS "BY OTHERS"
WILL BE PROVIDED AND INSTALLED BY THE CONTRACTOR.
ROMTEC UTILITIES WILL NOT INSTALL ANY OF THE
COMPONENTS SHOWN ON THIS PAGE.

REVISION HISTORY		DATE	REV	DESCRIPTION
1	REV	12/10/10	1	COMPONENT DRAWING
2	AM	12/21/10	2	CHANGED TO TSURUMI PUMPS
3	AM	02/11/11	3	UPDATE PER COMMENTS
4	AD	3/29/11	4	ADDED INLET PIPE AT 4891.22'
5	AD	9/12/11	5	CHANGED TO SHP PUMPS AFTER F.M. MODEL
6	AD	11/3/11	6	REVISED PER COMMENTS
7	AD	11/10/11	7	REVISED PER 11/8/11 COMMENTS
8	AD	12/6/11	8	REVISED FOR PRODUCTION LAUNCH

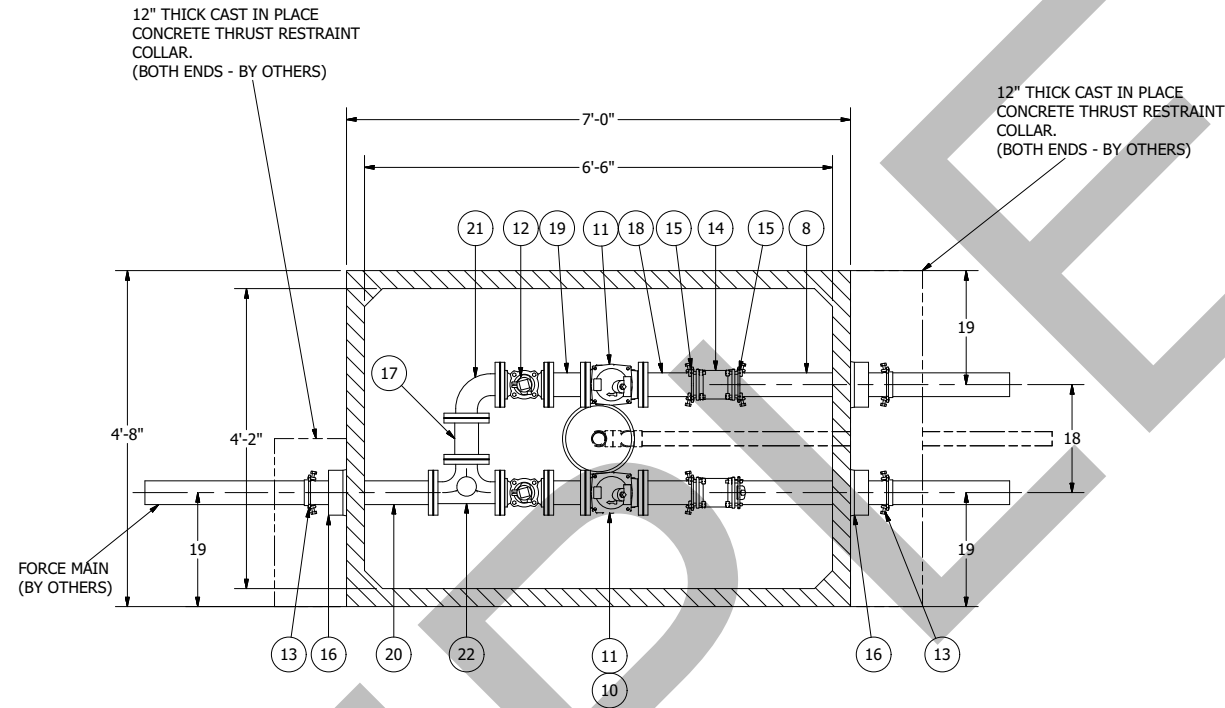
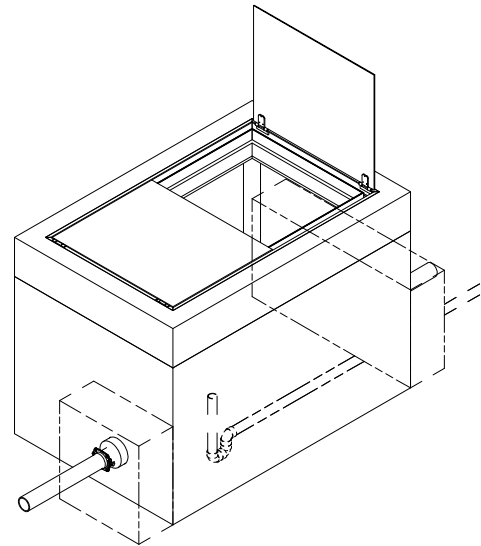
COMPONENT
DRAWING

**ROMTEC
UTILITIES**
18240 NORTH BANK ROAD
ROSEBURG, OREGON 97470
(541) 496-9678
FAX (541) 496-0804

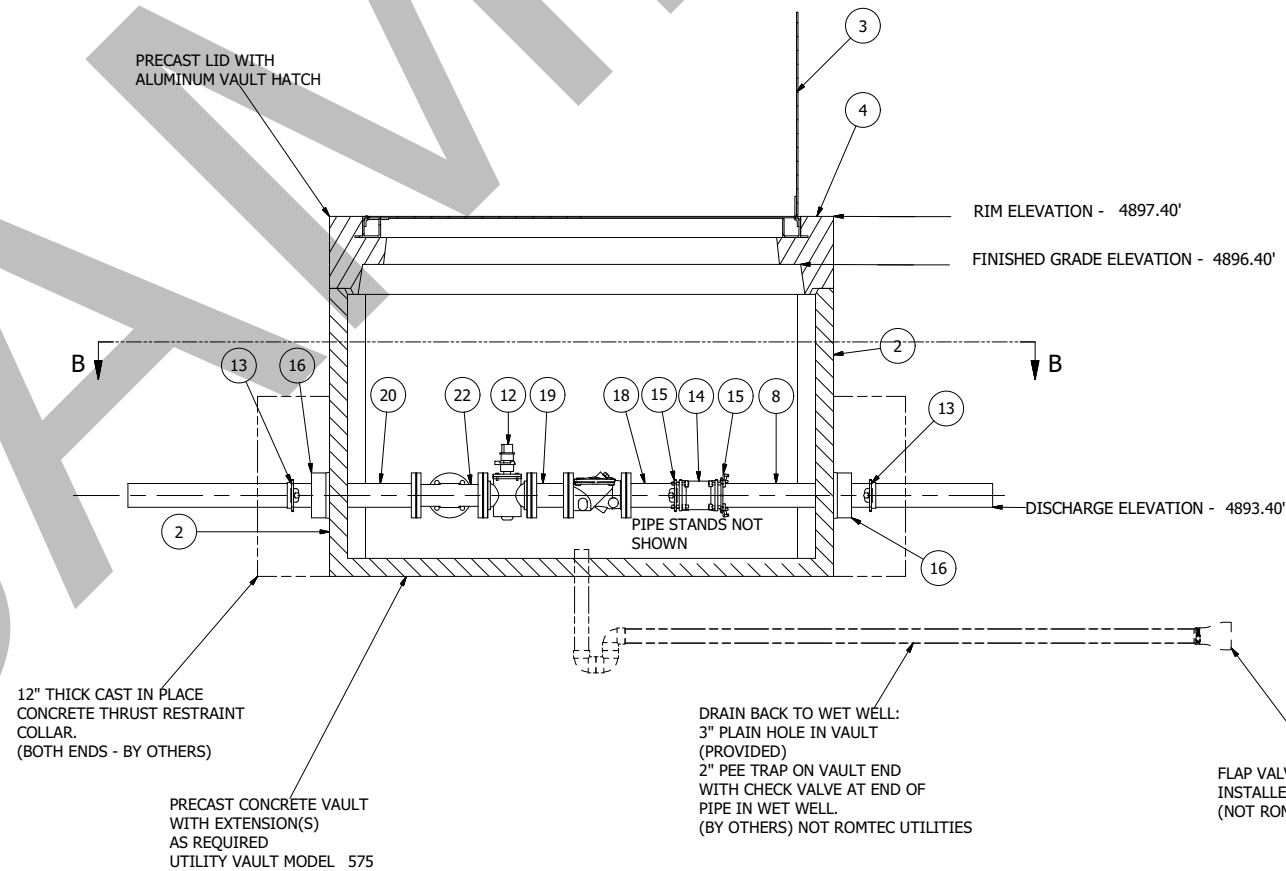
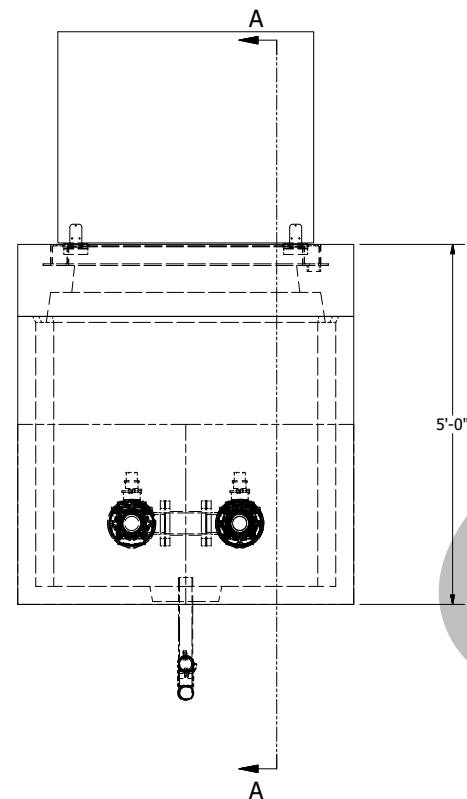
BECKWORTH FIRESTATION
3" - 5' DIA WET WELL

SHEET
1 OF 1

JOB NUMBER
RMTC
0000



NOTE: VAULT TOP SLAB IS PEDESTRIAN RATED



**575 VALVE VAULT
3in PIPING AND VALVES**

NOTE: ALL DIMENSIONS AND ELEVATIONS SHOWN ARE NOMINAL DIMENSIONS. IT IS THE RESPONSIBILITY OF THE ON-SITE CONTRACTOR OR ROMTEC UTILITIES CUSTOMER (NOT ROMTEC UTILITIES) TO VERIFY THE ACCURACY OF ANY CRITICAL DIMENSIONS OR ELEVATIONS PRIOR TO SETTING OR INSTALLING ANY EQUIPMENT.

VERIFY SCALE	BAR IS ONE INCH ON ORIGINAL DRAWING
0	1"
IF NOT ONE INCH ON THIS SHEET ADJUST SCALES ACCORDINGLY	
DSN - AD	11-10-11
DRN - AD	11-10-11
CKD - AD	11-10-11
DATE - 11-3-11	DATE

**COMPONENT
DRAWING**

**ROMTEC
UTILITIES**
18240 NORTH BANK ROAD
ROSEBURG, OREGON 97470
(541) 496-9678
FAX (541) 496-0804

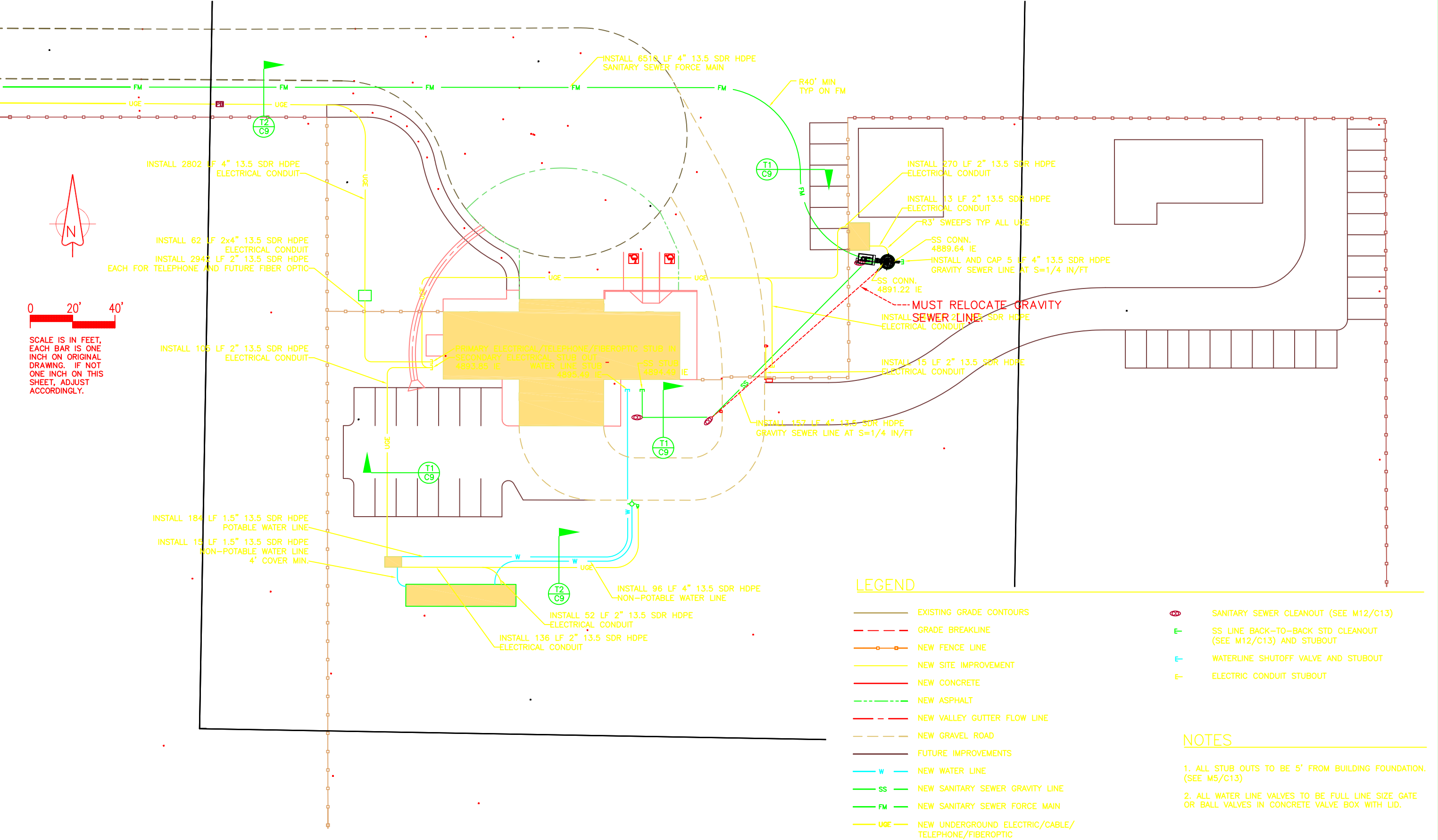
**BECKWORTH FIRESTATION
3" - 575 VALVE VAULT**

SHEET
2 OF 2

JOB NUMBER
**RMTC
0000**

REVISION HISTORY

REV	DESCRIPTION	DATE	APPROV
2	REVISED PER 11/8/11 COMMENTS	11-10-11	AD
1	COMPONENT DRAWING	11-3-11	AD



PROJECT NUMBER 1019800	CHECKED BY	NO.	DATE	REVISIONS	NO.	DATE	REVISIONS	FOREST:	SAMPLE	DRAWING C7
DESIGNED BY G. HALING	CHECKED BY							PROJECT NAME:		
DRAWN BY D. IVY	DATE 1-5-11							DRAWING NAME:		
										SHEET 7 OF 15