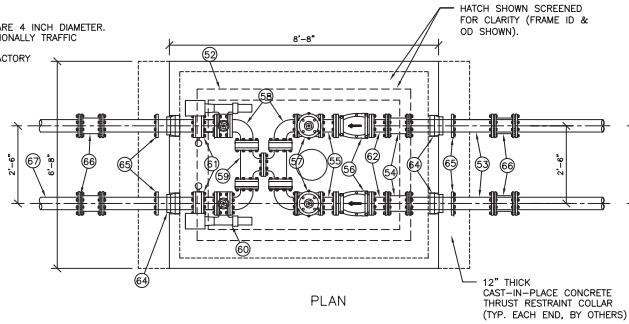
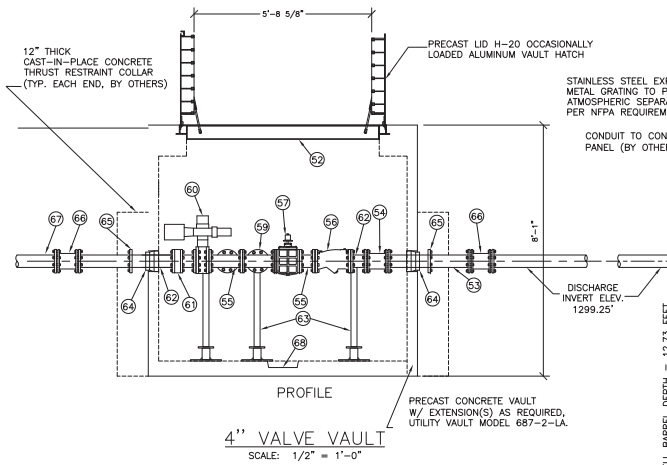


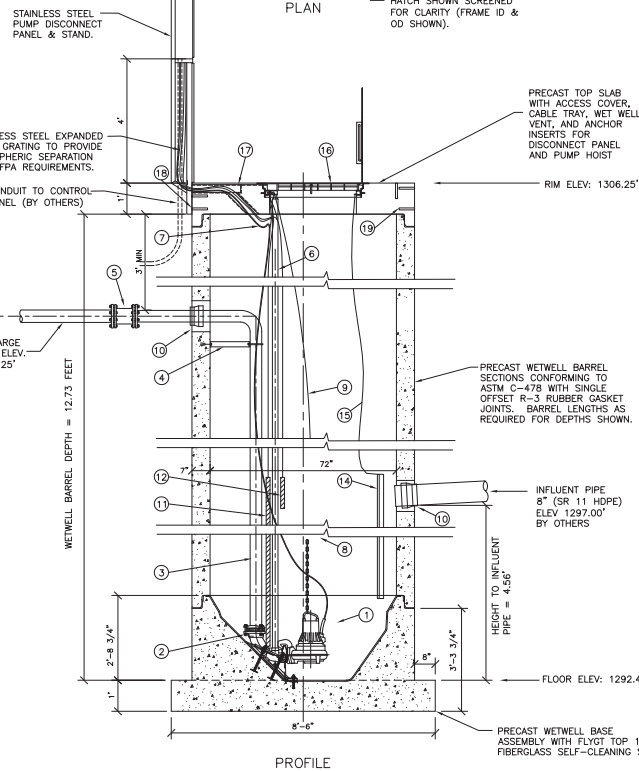
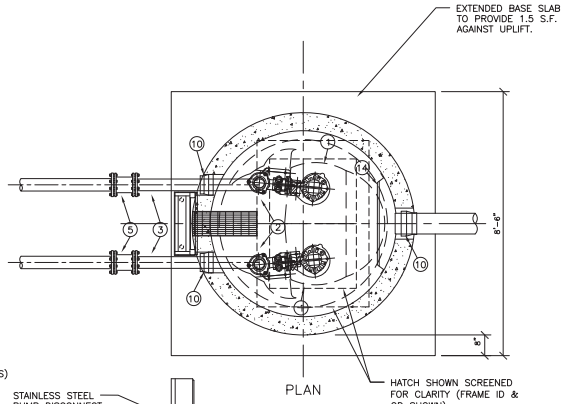
- VAULT DESIGN NOTES:**
1. ALL PIPING & VALVES WITHIN VAULT ARE 4 INCH DIAMETER.
  2. HATCH DESIGN LOADS: H-20 OCCASIONALLY TRAFFIC LOADED
  3. VALVES AND VAULT PIPING SYSTEM FACTORY TESTED AFTER ASSEMBLY.



NOTE: VAULT TOP SLABS ARE H-20 OCCASIONALLY TRAFFIC RATED.



NOTE: WETWELL TOP SLABS ARE H-20 OCCASIONAL TRAFFIC RATED.



NO.	DATE	DESCRIPTION	BY

VERIFY SCALE  
BASE IS ONE BOX ON  
DRAWING  
IF ANY ONE BOX ON  
DRAWING IS NOT  
CORRECTLY  
DSCR. AD  
DATE: 04-18-2005

**ROMTEC**  
18240 NORTH BANK ROAD  
ROSEBURG, OR 97470  
(541)-496-3541  
FAX (541)-496-0803

TIC  
GROEN GENERATION SYSTEMS  
6' WETWELL  
4" DISCHARGE & VAULT  
FLYGT NP 3085 PUMPS

SHEET  
1 OF  
JOB NUMBER  
RMTC 0126