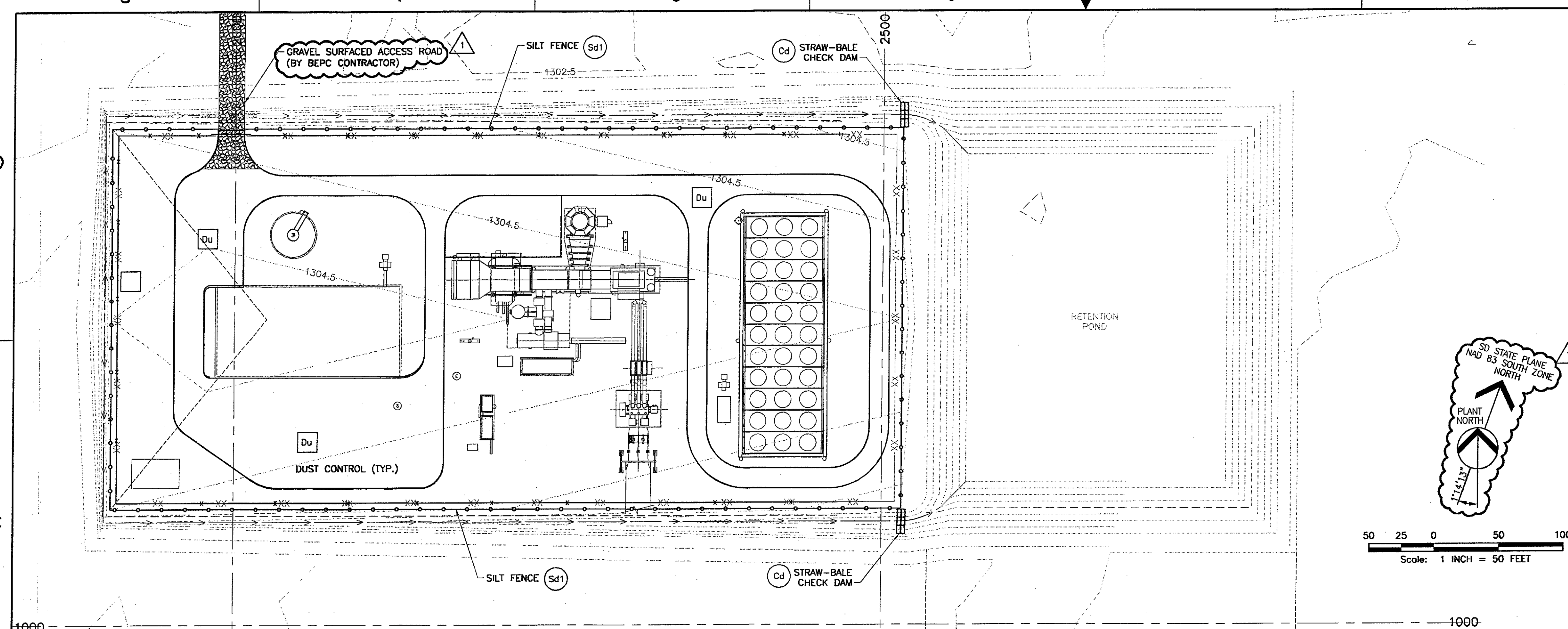


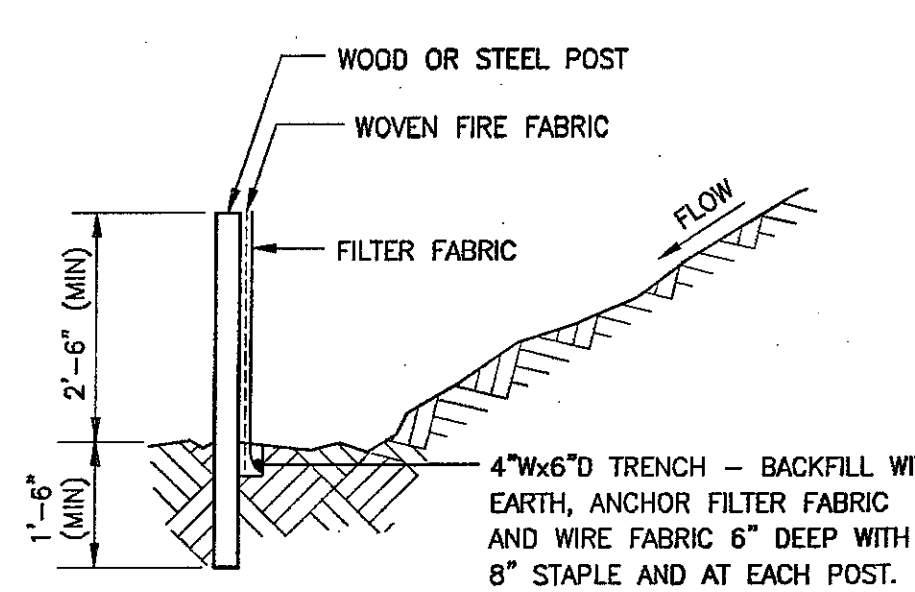
SOIL EROSION AND SEDIMENTATION CONTROL NOTES

1. EROSION CONTROL MEASURES SHALL BE AS A MINIMUM IN CONFORMANCE WITH "BEST MANAGEMENT PRACTICES FOR CONTROLLING SEDIMENT AND EROSION FROM CONSTRUCTION ACTIVITIES."
2. EROSION AND SEDIMENT CONTROL DEVICES SHALL BE INSTALLED AND INSPECTED PRIOR TO ANY GRADING ON SITE.
3. SILT BARRIERS SHALL BE PLACED AT DOWNSTREAM TOE OF ALL CUT AND FILL SLOPES.
4. STATEMENT-EROSION CONTROL MEASURES SHALL BE MAINTAINED AT ALL TIMES. ADDITIONAL EROSION CONTROL DEVICES MAY BE REQUIRED BY SOUTH DAKOTA DEPARTMENT OF ENVIRONMENTAL AND NATURAL RESOURCES.
5. BEPC WILL PROVIDE A CONSTRUCTION ENTRANCE AT THE POINT OF ENTRY OR EXIT TO THE EXISTING HIGHWAY AND A GRAVEL ACCESS ROAD FROM THE HIGHWAY TO THE SITE GATE. GE CONTRACTOR TO MAINTAIN ROADWAY AND ENTRANCE.
6. THE CONSTRUCTION EXIT SHALL BE MAINTAINED IN A CONDITION WHICH PREVENTS TRACKING OR FLOW OF MUD ONTO PUBLIC RIGHT OF WAY. THIS MAY REQUIRE PERIODIC TOP DRESSING WITH STONE, AS CONDITIONS DEMAND, AND REPAIR AND/OR CLEAN OUT OF ANY STRUCTURES USED TO TRAP SEDIMENT. ALL MATERIALS SPILLED, DROPPED, WASHED, OR TRACKED FROM VEHICLE OR SITE ONTO PUBLIC ROADWAY OR INTO STORM DRAIN SHALL BE REMOVED IMMEDIATELY.
7. IMMEDIATELY AFTER THE ESTABLISHMENT OF CONSTRUCTION ENTRANCES/EXITS, ALL PERIMETER EROSION CONTROL DEVICES AND STORMWATER MANAGEMENT DEVICES SHALL BE INSTALLED PRIOR TO ANY OTHER CONSTRUCTION.
8. BEPC CONTRACTOR TO INSTALL EROSION AND SEDIMENT CONTROL DEVICES AND OBTAIN PERMIT. GE CONTRACTOR TO TAKE OVER PERMIT AND MAINTAIN EROSION CONTROL DEVICES UNTIL THE CONSTRUCTION AREA HAS BEEN COMPLETELY STABILIZED WITH PERMANENT GRAVEL SURFACING AND/OR ALL ROADS/DRIVEWAYS HAVE BEEN PAVED.
9. THE CONTRACTOR SHALL REMOVE ACCUMULATED SILT WHEN THE SILT IS WITHIN 12" OF THE TOP OF THE SILT FENCE UTILIZED FOR EROSION CONTROL.
10. FAILURE TO INSTALL OPERATE OR MAINTAIN ALL EROSION CONTROL MEASURES SHALL RESULT IN ALL CONSTRUCTION BEING STOPPED ON THE JOB UNTIL SUCH MEASURES ARE CORRECTED TO LOCAL JURISDICTION STANDARDS.
11. SEDIMENT/EROSION CONTROL DEVICES SHALL BE CHECKED AFTER EACH STORM EVENT. EACH DEVICE SHALL BE MAINTAINED OR REPLACED IF SEDIMENT ACCUMULATION HAS REACHED ONE HALF THE CAPACITY OF THE DEVICE.
12. SILT FENCES AND HAY BALE BARRIERS SHALL BE CLEANED OR REPLACED AND MAINTAINED IN FUNCTIONAL CONDITION UNTIL PERMANENT EROSION CONTROL MEASURES ARE ESTABLISHED.
13. ANY ADDITIONAL CONSTRUCTION OTHER THAN SHOWN ON THIS PLAN MAY REQUIRE SEPARATE AND ADDITIONAL EROSION AND SEDIMENT CONTROL MEASURES AND APPROVAL.
14. DISTURBED AREAS LEFT IDLE FOR TWO TO FOUR WEEKS, AND NOT TO FINAL GRADE, SHALL BE STABILIZED WITH 3" OF GRAVEL. DISTURBED AREAS LEFT IDLE FOR FOUR WEEKS OR MORE SHALL BE STABILIZED WITH 6" OF GRAVEL. ALL AREAS TO FINAL GRADE SHALL BE STABILIZED TO FINAL PAVING CONDITIONS WITHIN TWO WEEKS.
15. WHEN HAND PLANTING, MULCH (HAY OR STRAW) SHALL BE UNIFORMLY SPREAD OVER SEEDED AREA WITHIN 24 HOURS OF SEEDING.
16. DURING UNSUITABLE GROWING SEASONS, MULCH SHALL BE USED AS A TEMPORARY COVER (Ds2). ON SLOPES THAT ARE 4:1 OR STEEPER MULCH SHALL BE ANCHORED.
17. THE ESCAPE OF SEDIMENT FROM THE SITE SHALL BE PREVENTED BY THE INSTALLATION OF EROSION CONTROL MEASURES AND PRACTICES PRIOR TO, OR CONCURRENT WITH LAND DISTURBING ACTIVITIES.
18. ALL EROSION AND SEDIMENT CONTROL MEASURES SHALL BE CHECKED DAILY AND ANY DEFICIENCIES NOTED SHALL BE CORRECTED BY THE END OF EACH DAY. ADDITIONAL EROSION AND SEDIMENT CONTROL MEASURES SHALL BE INSTALLED IF DEEMED NECESSARY BY ON-SITE INSPECTION.
19. POLLUTION CONTROLS: USE WATER SPRINKLING (Du) AND OTHER SUITABLE METHODS AS NECESSARY TO LIMIT THE AMOUNT OF DUST RISING AND SCATTERING IN THE AIR, TO THE LOWEST LEVEL OF AIR POLLUTION PRACTICAL FOR THE CONDITION OF WORK.
20. COMPLY WITH THE LATEST EDITION OF THE STATE EROSION CONTROL MANUAL.

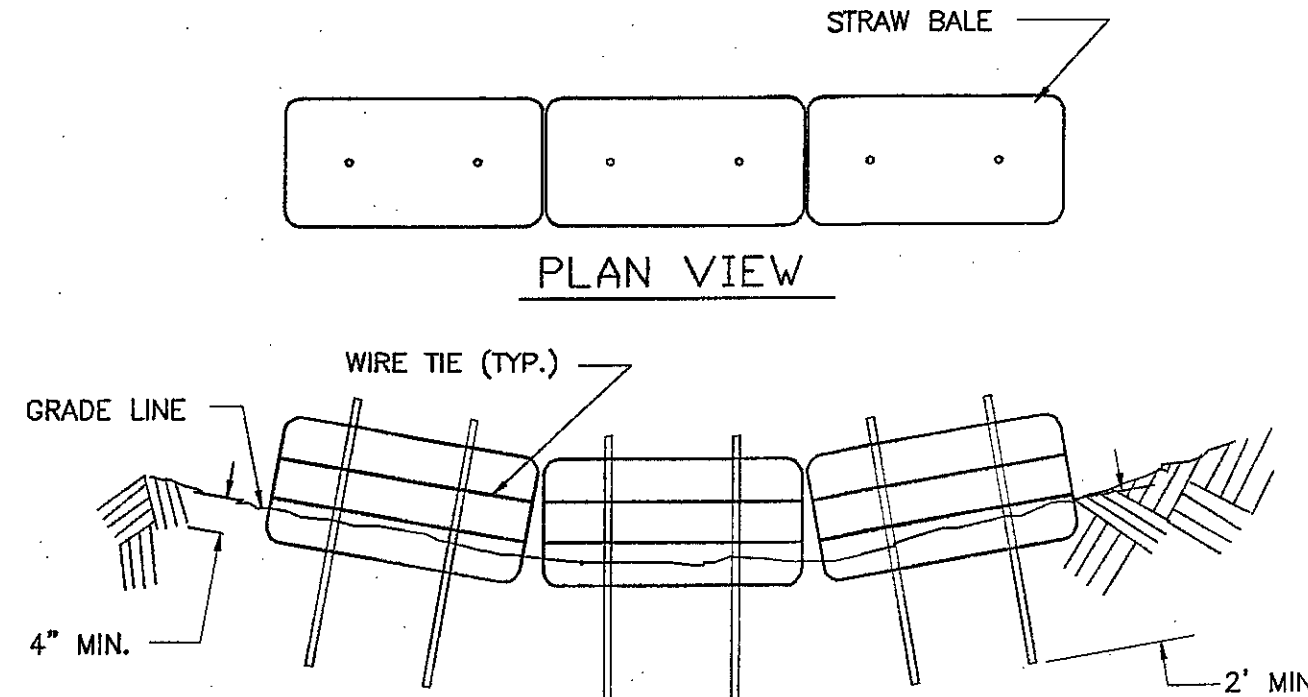
FOR CONSTRUCTION 5/23/2005



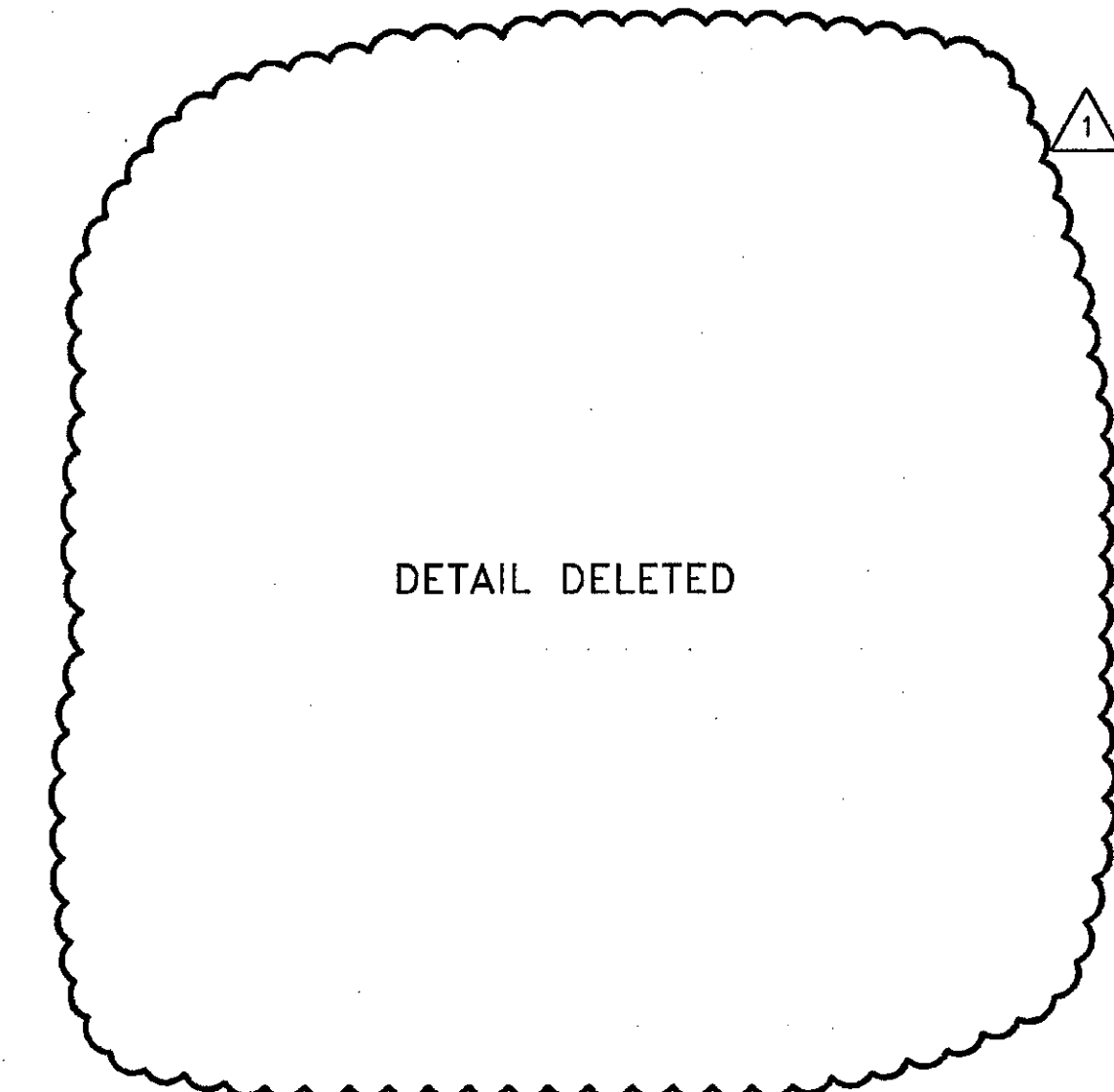
FOR EACH STRAW BALE, DRIVE (2) #5 REBARS, STEEL PICKETS, OR 2"x2" WOODEN STAKES INTO GROUND. ANGLE FIRST STAKE TOWARD PREVIOUSLY PLACED BALE.



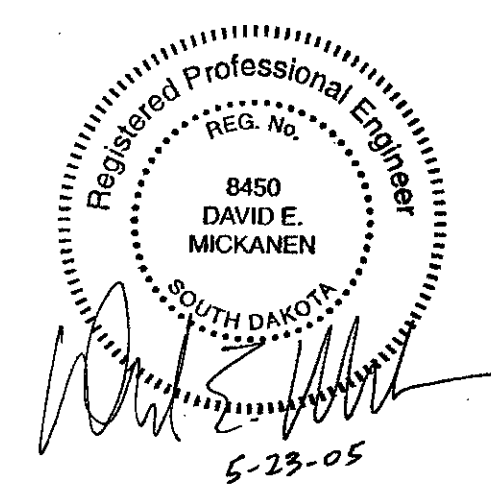
- NOTES:**
1. FILTER FABRIC FENCE TO BE PLACED PRIOR TO THE START OF ROUGH GRADING.
 2. STEEL POSTS SHALL BE APPROVED BY ENGINEER PRIOR TO USE.
 3. WOOD POSTS SHALL BE 2"x4" MINIMUM.
 4. POSTS SHALL BE SPACED AT 6' INTERVALS MAXIMUM.
 5. FILTER FABRIC SHALL BE SECURELY BOUND TO POSTS WITH EITHER STAPLES OR WIRE TIES.
 6. CONTRACTOR SHALL BE RESPONSIBLE FOR MAINTAINING CONDITION OF FILTER FABRIC FENCE IN A CONDITION THAT IS SATISFACTORY TO THE ENGINEER UNTIL FINAL ACCEPTANCE OF WORK.
 7. COMPLY WITH SDDOT EROSION CONTROL MANUAL "SILT FENCE AND SILT TRAP" PLATE NUMBER 734.04.



- NOTES:**
1. STRAW BALES TO BE STACKED IN A SINGLE ROW AND EMBEDDED IN THE SOIL TO A MIN. 4" DEPTH.
 2. ALL BALES ARE TO BE SECURELY BOUND WITH WIRE OR STRING.
 3. SCATTER LOOSE STRAW OVER THE AREA IMMEDIATELY UPSLOPE FROM THE SEDIMENT PROTECTION, FILL GAPS BETWEEN BALES WITH LOOSE STRAW.
 4. CONTRACTOR SHALL BE RESPONSIBLE FOR MAINTAINING SEDIMENT BARRIERS IN A SATISFACTORY CONDITION UNTIL FINAL ACCEPTANCE OF WORK.
 5. COMPLY WITH SDDOT EROSION CONTROL MANUAL "EROSION BALES" PLATE NUMBER 734.02.



CODE	PRACTICE	MAP SYMBOL
(Cd)	CHECK DAM	(Cd)
(Sd1)	SEDIMENT BARRIER	(TYPE) (Sd1)
(Du)	DUST CONTROL ON DISTURBED AREAS	(Du)



SILT FENCE DETAIL (Sd1)
N.T.S.

STRAW BALE CHECK DAM DETAIL (Cd)
N.T.S.

BASIN ELECTRIC POWER COOPERATIVE
GROTON GENERATION STATION
UNIT #1
CONTRACT #488170

© COPYRIGHT, 2005, GE PACKAGED POWER, INC., ALL RIGHTS RESERVED. THIS DRAWING IS THE PROPRIETARY AND/OR CONFIDENTIAL PROPERTY OF GE PACKAGED POWER, L.P., AND IS LOANED IN STRICT CONFIDENCE WITH THE UNDERSTANDING THAT IT WILL NOT BE REPRODUCED NOR USED FOR ANY PURPOSE EXCEPT THAT FOR WHICH IT IS LOANED. IT SHALL BE IMMEDIATELY RETURNED ON DEMAND, AND IS SUBJECT TO ALL OTHER TERMS AND CONDITIONS OF ANY WRITTEN AGREEMENT OR PURCHASE ORDER WHICH INCORPORATES OR RELATES TO THIS DRAWING.

REV	DESCRIPTION	DRAWN	DATE	CHECK	DESIGN	DES ACT	QUALITY	UNIT TYPE
1	INCORPORATED BEPC COMMENTS	PLC	JGY 5/23/05	DEM	JGY			
0	INITIAL ISSUE	CC	4/1/05	DEM	JBS			

THIRD ANGLE PROJECTION

UNLESS OTHERWISE SPECIFIED DIMENSIONS ARE IN INCHES DO NOT SCALE DRAWING

TOLERANCES
DECIMALS FRACTIONAL ANGULAR
.XX ± .03 ±
.XXX ± .010 ±

NEXT ASSY.

LMS-100

ADDL INFO

LOCKWOOD GREENE
ENGINEERING & CONSTRUCTION

GE PACKAGED POWER, INC.

TITLE
EROSION AND SEDIMENT CONTROL PLAN

DWG NO.
20120-01-038353

REV.
1

SCALE 1" = 50'-0" SHEET 1 OF 1

RESERVED