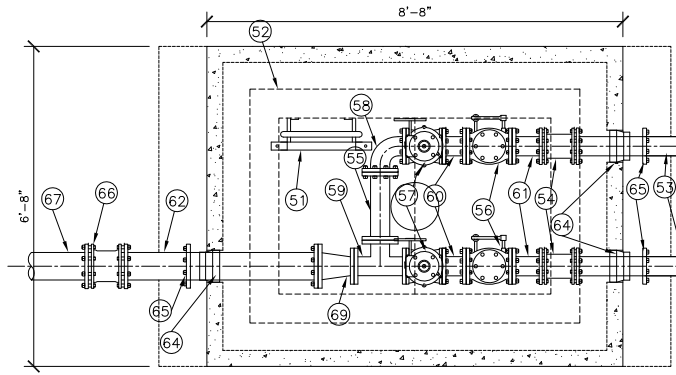
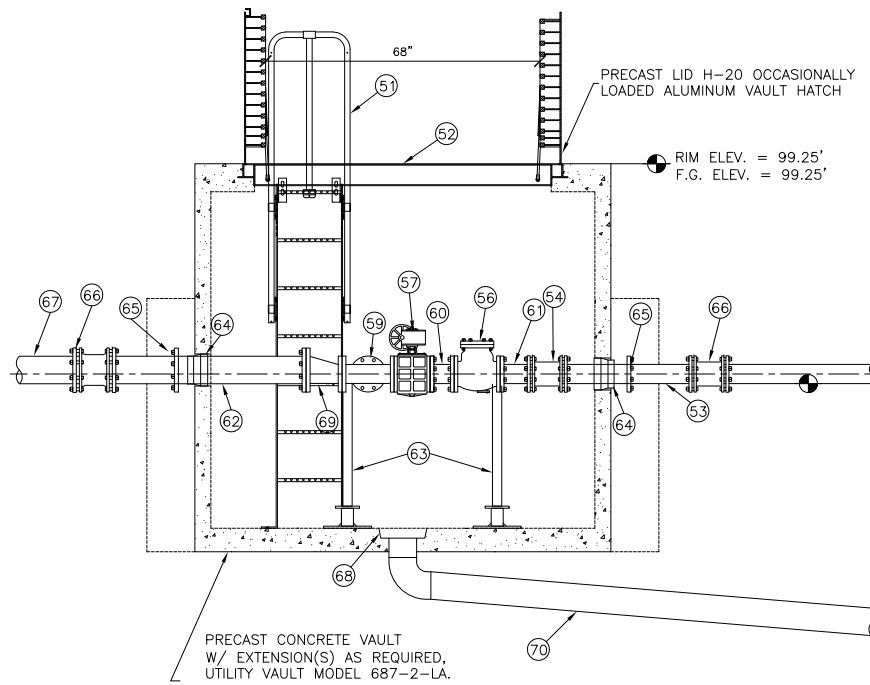


- VAULT DESIGN NOTES:
1. ALL PIPING & VALVES WITHIN VAULT ARE 4 INCH DIAMETER.
 2. HATCH DESIGN LOADS: H-20 OCCASIONAL TRAFFIC RATED.
 3. VALVES AND VAULT PIPING SYSTEM FACTORY TESTED AFTER ASSEMBLY.



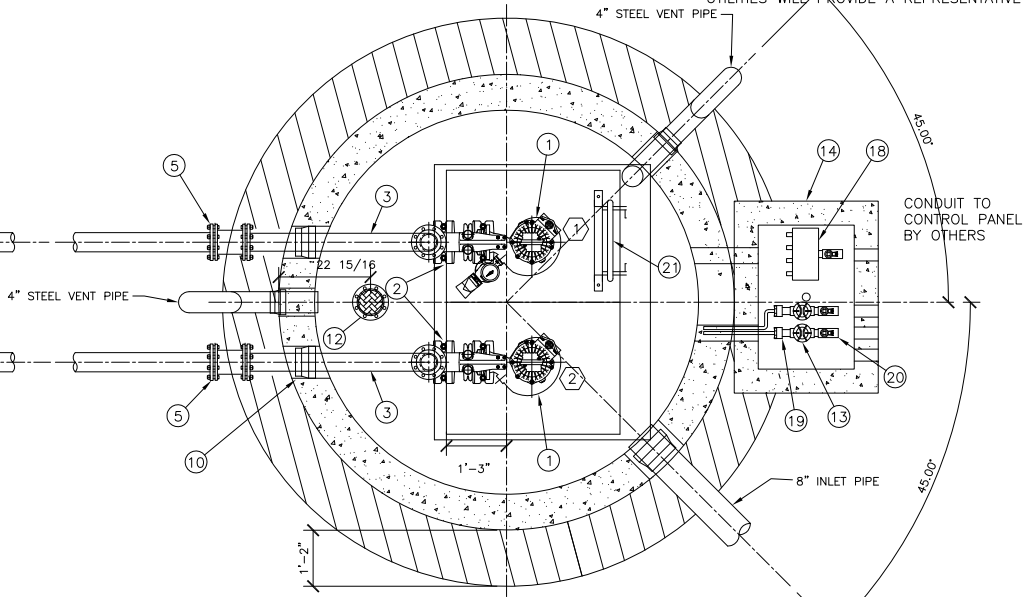
PLAN

NOTE: VAULT TOP SLAB IS H-20 OCCASIONAL TRAFFIC RATED.

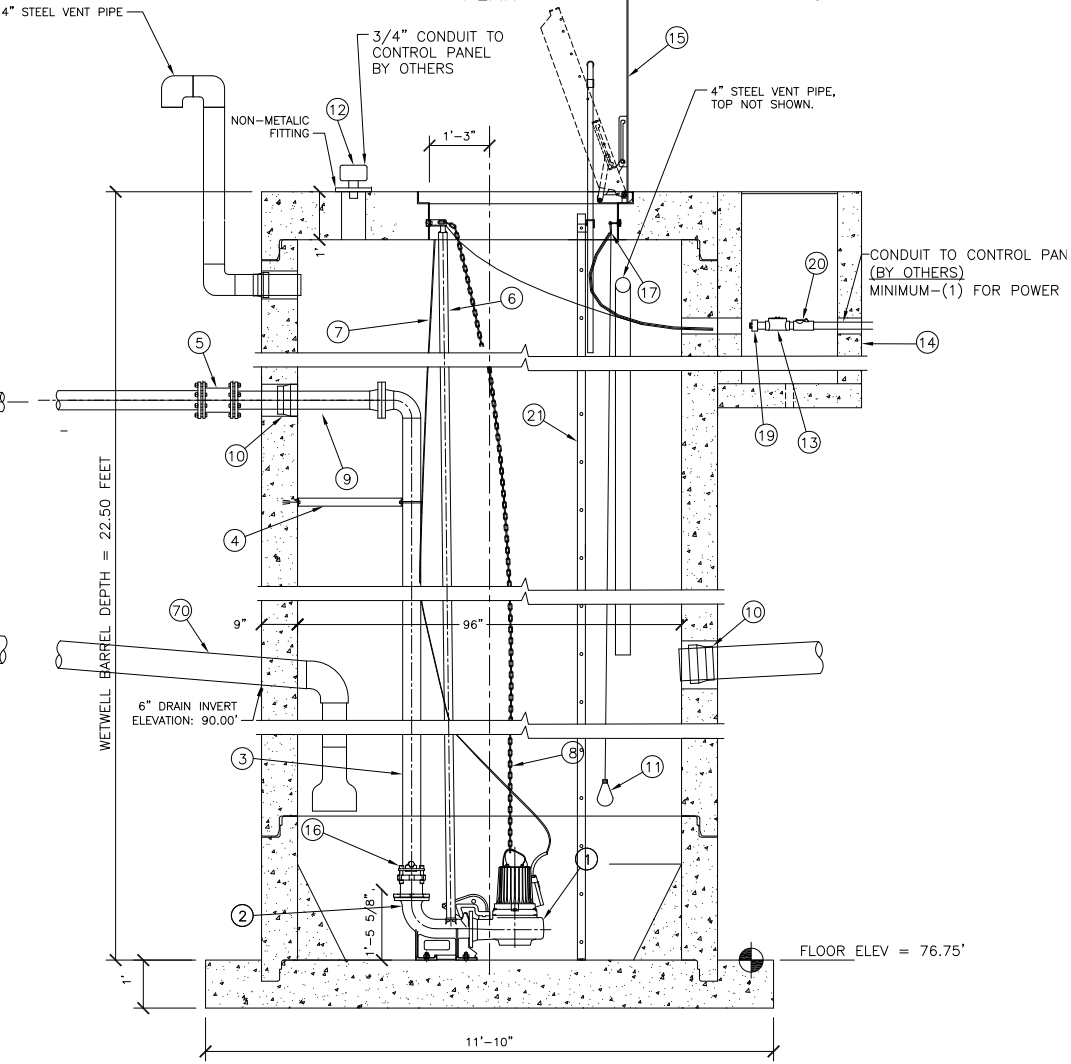


PROFILE
4" VALVE VAULT,
6" FORCE MAIN
SCALE: 1/2" = 1'-0"

NOTE: WETWELL TOP SLAB IS H-20 OCCASIONAL TRAFFIC RATED.



PLAN



PROFILE

8" DIAMETER WETWELL
SCALE: 1/2" = 1'-0"

NOTE:
ALL MATERIALS SHOWN ON THIS SHEET WILL BE SUPPLIED BY ROMTEC UTILITIES AND DELIVERED TO THE SITE AFTER THE HOLE HAS BEEN EXCAVATED AND SHORED. THE CONTRACTOR WILL SUPPLY A CRANE OF SUFFICIENT SIZE TO LOWER ALL THE CONCRETE PIECES INTO THE HOLE SAFELY. THE CONTRACTOR WILL INSTALL THE WET WELL. ROMTEC UTILITIES WILL PROVIDE A REPRESENTATIVE FOR

TECHNICAL ADVICE ON THE DAY OF INSTALLATION TO ANSWER ANY QUESTIONS THAT MAY ARISE. THE CONTRACTOR IS RESPONSIBLE FOR ALL PLUMBING AND ELECTRICAL CONNECTIONS AND INSTALLATION. ITEMS NOTED AS "(BY OTHERS)" WILL BE PROVIDED AND INSTALLED BY THE CONTRACTOR. ROMTEC UTILITIES WILL NOT INSTALL ANY OF THE COMPONENTS SHOWN ON THIS PAGE.

© 2009 ROMTEC, INC. ALL RIGHTS RESERVED. THESE PLANS AND DRAWINGS MAY NOT BE REPRODUCED, ADAPTED, OR FURTHER DISTRIBUTED, AND NO COMPONENTS MAY BE CONSTRUCTED FROM THESE PLANS, WITHOUT WRITTEN PERMISSION OF ROMTEC, INC.

NOTE: PROVIDE JOINT WRAP TO EXTERIOR TAPECOAT M-680, 6" WIDE AT EACH EXTERIOR JOINT. (ROMTEC UTILITIES TO SUPPLY, CONTRACTOR TO INSTALL.)

PROVIDE CON-SEAL (CS-440) AND O-RING GASKET (OIL RESISTANT) AT EACH JOINT, ROMTEC UTILITIES TO SUPPLY, CONTRACTOR TO INSTALL.

NO.	DATE	DESCRIPTION	BY
1	8-4-09	COMPONENT DRAWING	AD
2	8-8-09	UPDATE FOR PRODUCTION	AD
3	9-15-09	UPDATE PER COMMENTS	AD
4	9-24-09	PUMP SELECTION CHANGE	AD

VERIFY SCALE
BAR IS ONE INCH ON
ORIGINAL DRAWING
IF NOT SHOWN
ON THIS SHEET
SCALES ACCORDINGLY

18240 NORTH BANK ROAD ROSEBURG, OR 97470 (541)-496-9678 FAX (541)-496-0804

JACOBS ENGINEERING BP CHP

8" DIA. WETWELL 4" DISCHARGE AND 6" FM. DUPLEX 5 HP PUMPS

SHEET D1 OF 1 JOB NUMBER RMTC 0000
