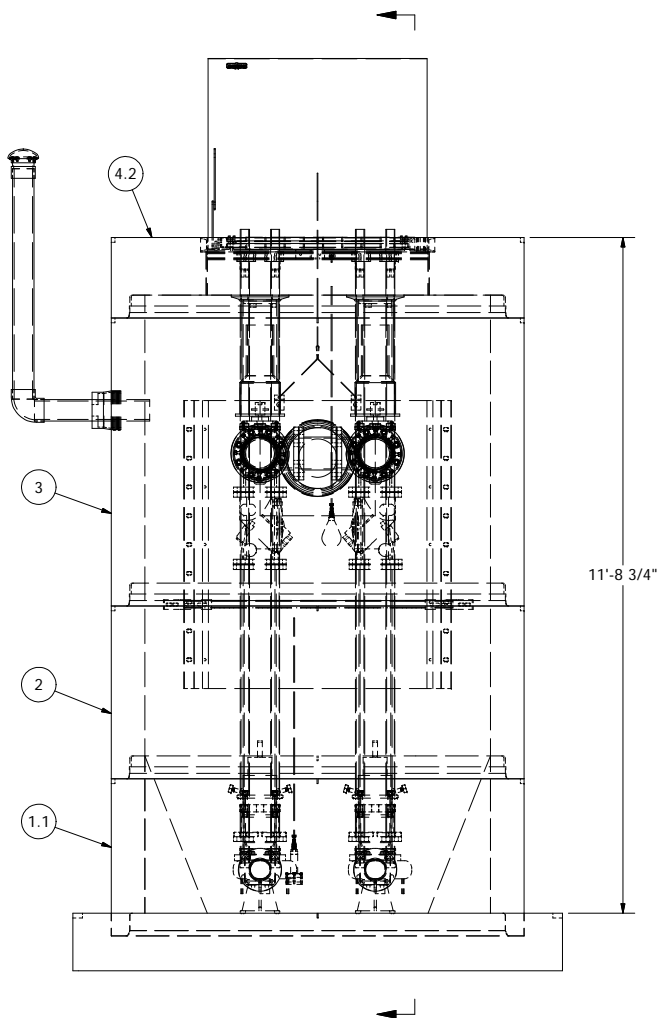
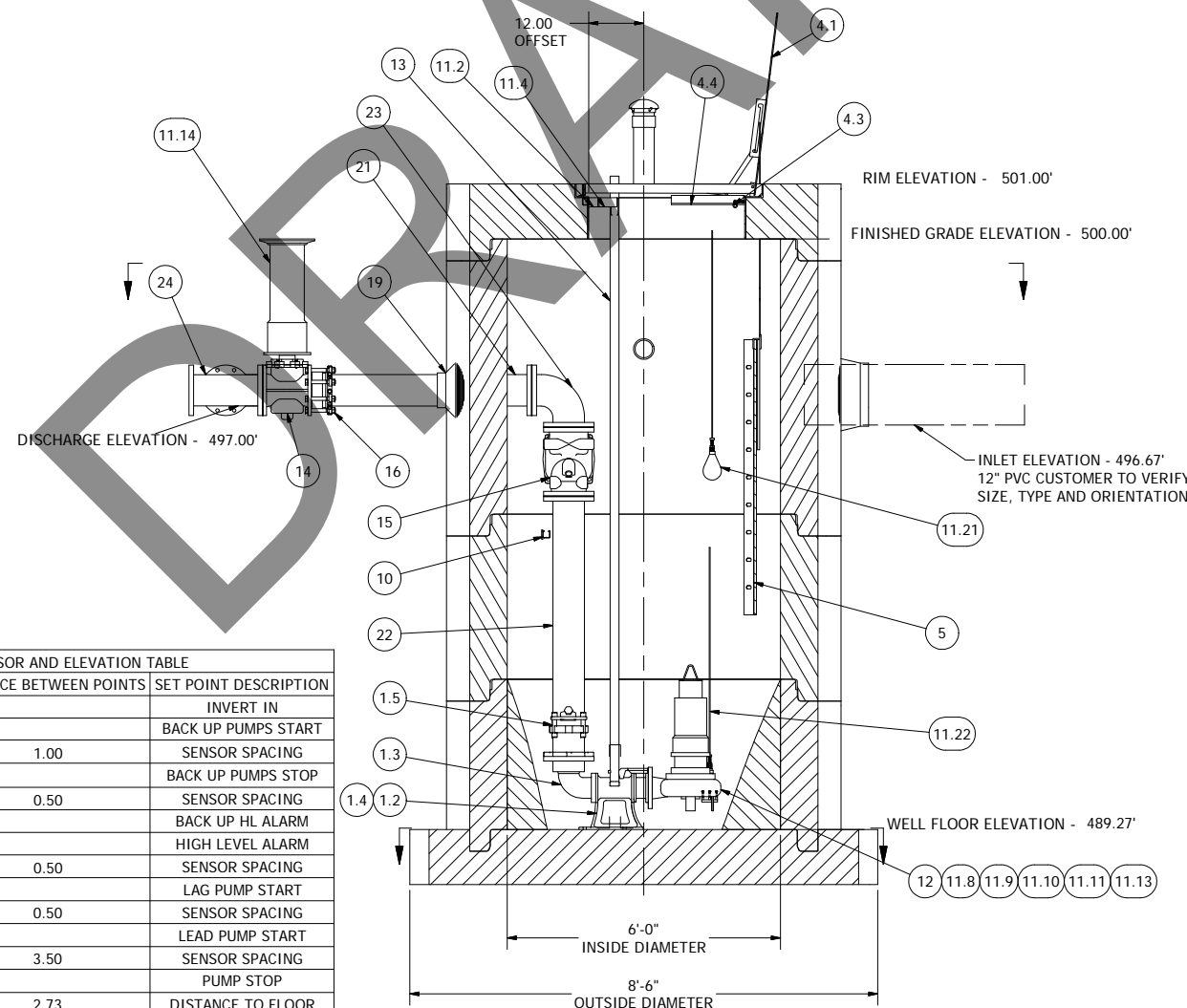


NOTE: WET WELL TOP SLAB IS PEDESTRIAN RATED



SENSOR AND ELEVATION TABLE		
LEVEL ELEVATION	DISTANCE BETWEEN POINTS	SET POINT DESCRIPTION
496.67		INVERT IN
498.25		BACK UP PUMPS START
	1.00	SENSOR SPACING
497.25		BACK UP PUMPS STOP
	0.50	SENSOR SPACING
496.75		BACK UP HL ALARM
496.50		HIGH LEVEL ALARM
	0.50	SENSOR SPACING
496.00		LAG PUMP START
	0.50	SENSOR SPACING
495.50		LEAD PUMP START
	3.50	SENSOR SPACING
492.00		PUMP STOP
	2.73	DISTANCE TO FLOOR
489.27		FLOOR ELEVATION



6' DIAMETER WET WELL 6" DISCHARGE PIPING 80DLFU63.7 EBARA PUMPS

NOTE: ALL DIMENSIONS AND ELEVATIONS SHOWN ARE NOMINAL DIMENSIONS. IT IS THE RESPONSIBILITY OF THE ON-SITE CONTRACTOR OR ROMTEC UTILITIES CUSTOMER (NOT ROMTEC UTILITIES) TO VERIFY THE ACCURACY OF ANY CRITICAL DIMENSIONS OR ELEVATIONS PRIOR TO SETTING OR INSTALLING ANY EQUIPMENT.

ALL MATERIALS SHOWN ON THIS SHEET WILL BE SUPPLIED BY ROMTEC UTILITIES AND DELIVERED TO THE SITE AFTER THE HOLE HAS BEEN EXCAVATED AND SHORED. THE CONTRACTOR SHALL SUPPLY A CRANE OF SUFFICIENT SIZE TO LOWER ALL THE CONCRETE PIECES INTO THE HOLE SAFELY. THE THE CONTRACTOR SHALL INSTALL THE WET WELL (AND VALVE VAULT AND METERING VAULT IF APPLICABLE). ROMTEC UTILITIES WILL PROVIDE A REPRESENTATIVE FOR TECHNICAL ASSISTANCE ON THE DAY OF INSTALLATION TO ANSWER ANY QUESTIONS THAT MAY ARISE. THE CONTRACTOR IS RESPONSIBLE FOR ALL PLUMBING AND ELECTRICAL CONNECTIONS AND INSTALLATION. ITEMS NOTED AS "BY OTHERS" WILL BE PROVIDED AND INSTALLED BY THE CONTRACTOR. ROMTEC UTILITIES WILL NOT INSTALL ANY OF THE COMPONENTS SHOWN ON THIS PAGE.

© 2013 ROMTEC INC. ALL RIGHTS RESERVED. THESE PLANS AND DRAWINGS MAY NOT BE REPRODUCED, ADAPTED, OR FURTHER DISTRIBUTED, AND NO COMPONENTS MAY BE CONSTRUCTED FROM THESE PLANS, WITHOUT WRITTEN PERMISSION OF ROMTEC, INC.

REVISION HISTORY		DATE	REV	DESCRIPTION	BY	CHKD	APPV
3	VALVE WRENCH	9/3/14	NNA				
2	CORD GRIPS	8/13/14	NNA				
1	LAUNCH DOCS	8/8/14	NNA				
1	DESCRIPTION	8/8/14	NNA				
1	DATE	6/4/14	AD				

COMPONENT
DRAWING

**ROMTEC
UTILITIES**
18240 NORTH BANK ROAD
ROSEBURG, OREGON 97470
(541) 496-9678
FAX (541) 496-0804

CONTECH PLANT
6" - 6' DIA WET WELL

SHEET
1 OF 1
JOB NUMBER
RMTC
0000