

INVERT ELEVATION - 2574.81'  
INFLUENT SEWER (BY OTHERS)  
18" PVC - CUSTOMER VERIFY

15.00

LOWER DISCHARGE

UPPER DISCHARGE

4" - 150# FLANGE AND NOZZLE FOR SONIC LEVEL SENSOR.

BY SCADATECH

BY SCADATECH

43" X 66" CLEAR HATCH OPENING

12'-0"

Technical drawing of a well structure, showing various components and elevations. The drawing includes a cross-section of the well shaft and a plan view of the well head assembly.

**Key Components and Labels:**

- 4" - 150# FLANGE AND NOZZLE FOR SONIC LEVEL SENSOR.** (Point 6)
- RIM ELEVATION - 2592.00'**  
**FINISHED GRADE ELEV - 2592.00'**
- 58 BY SCADATECH**
- INVERT ELEVATION - 2574.81'**  
**INFLUENT SEWER (BY OTHERS)**  
**18" PVC**
- WELL FLOOR ELEVATION - 2560.00'**
- 8'-0" INSIDE DIAMETER**
- 9'-6" BASE DIMENSION**
- 15.00 OFFSET**
- 2 PL 43**
- BY SCADATECH 59**
- NEARSIDE 44**  
**FARSIDE 41**
- 23 29 30 31 32 33 34**
- 25**
- 26**
- 37**
- 40**
- 42**
- 45**
- 47**
- 51**
- 53 9 10 11 54**
- 5**
- 62**
- 8**
- 14**
- 16**
- 35**
- 39**
- 3**
- 2**
- 1**
- 4**

**Dimensions and Elevation Data:**

- 15.00 OFFSET**
- 8'-0" INSIDE DIAMETER**
- 9'-6" BASE DIMENSION**
- 2592.00' RIM ELEVATION**
- 2592.00' FINISHED GRADE ELEV**
- 2574.81' INVERT ELEVATION**
- 2560.00' WELL FLOOR ELEVATION**

**Notes:**

- 58 BY SCADATECH**
- 59 BY SCADATECH**
- INFLUENT SEWER (BY OTHERS)**

ALL MATERIALS SHOWN ON THIS SHEET WILL BE SUPPLIED BY ROMTEC UTILITIES AND DELIVERED TO THE SITE AFTER THE HOLE HAS BEEN EXCAVATED AND SHORED. THE CONTRACTOR SHALL SUPPLY A CRANE OF SUFFICIENT SIZE TO LOWER ALL THE CONCRETE PIECES INTO THE HOLE SAFELY. THE CONTRACTOR SHALL INSTALL THE WET WELL (AND VALVE VAULT AND METERING VAULT IF APPLICABLE). ROMTEC UTILITIES WILL PROVIDE A REPRESENTATIVE FOR TECHNICAL ASSISTANCE ON THE DAY OF INSTALLATION TO ANSWER ANY QUESTIONS THAT MAY ARISE. THE CONTRACTOR IS RESPONSIBLE FOR ALL PLUMBING AND ELECTRICAL CONNECTIONS AND INSTALLATION. ITEMS NOTED AS "BY OTHERS" WILL BE PROVIDED AND INSTALLED BY THE CONTRACTOR. ROMTEC UTILITIES WILL NOT INSTALL ANY OF THE COMPONENTS SHOWN ON THIS PAGE.

VERIFY SCALE BY COMPARING THIS ORIGINAL DRAWING	0	1"	
DO NOT SCALE THIS DRAWING BASED ON THIS SHEET, ADJUST SCALES ACCORDINGLY			
7	AS BUILT CHANGES	5/24/10	AD
6	CHANGES TO PART'S LIST FOR PRODUCTION LAUNCH	2/26/10	AD
5	CHANGES PER 2/10/10 COMMENTS	2/11/10	AD
4	CHANGES PER 1/14/10 COMMENTS	1/26/10	AM
3	CHANGED TO FLGT PUMPS	12/23/09	AM
2	ADDED BY SCADATECH NOTE	12/22/09	AM
1	COMPONENT DRAWING	12/16/09	AM
REV	DESCRIPTION	DATE	APPROV
REVISION HISTORY			
CND - AD			
DATE - 12-14-09			

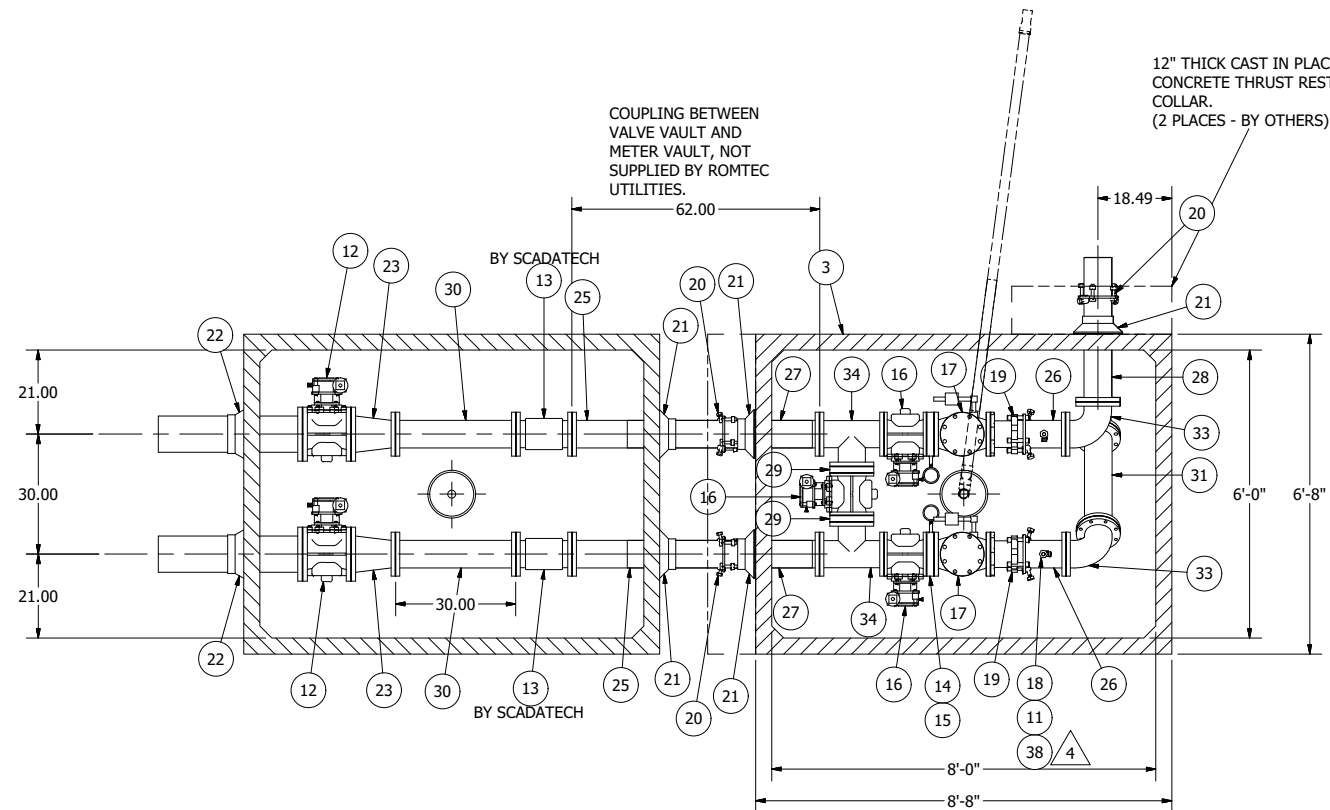
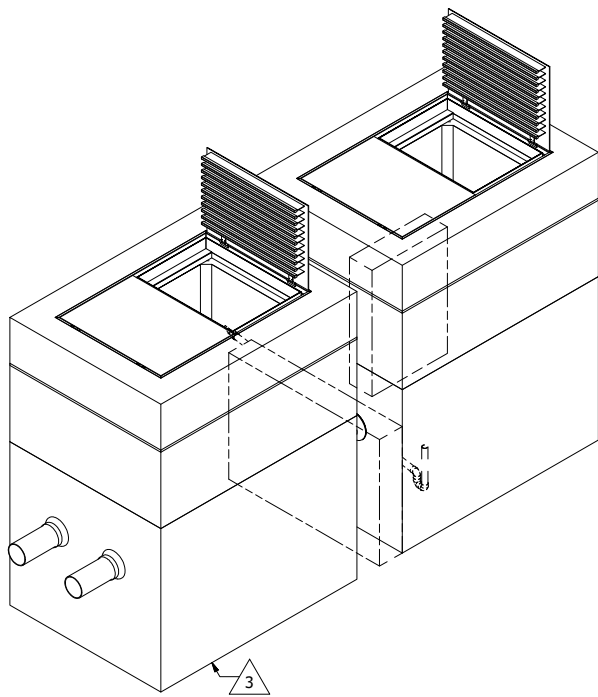


CCA NEVADA

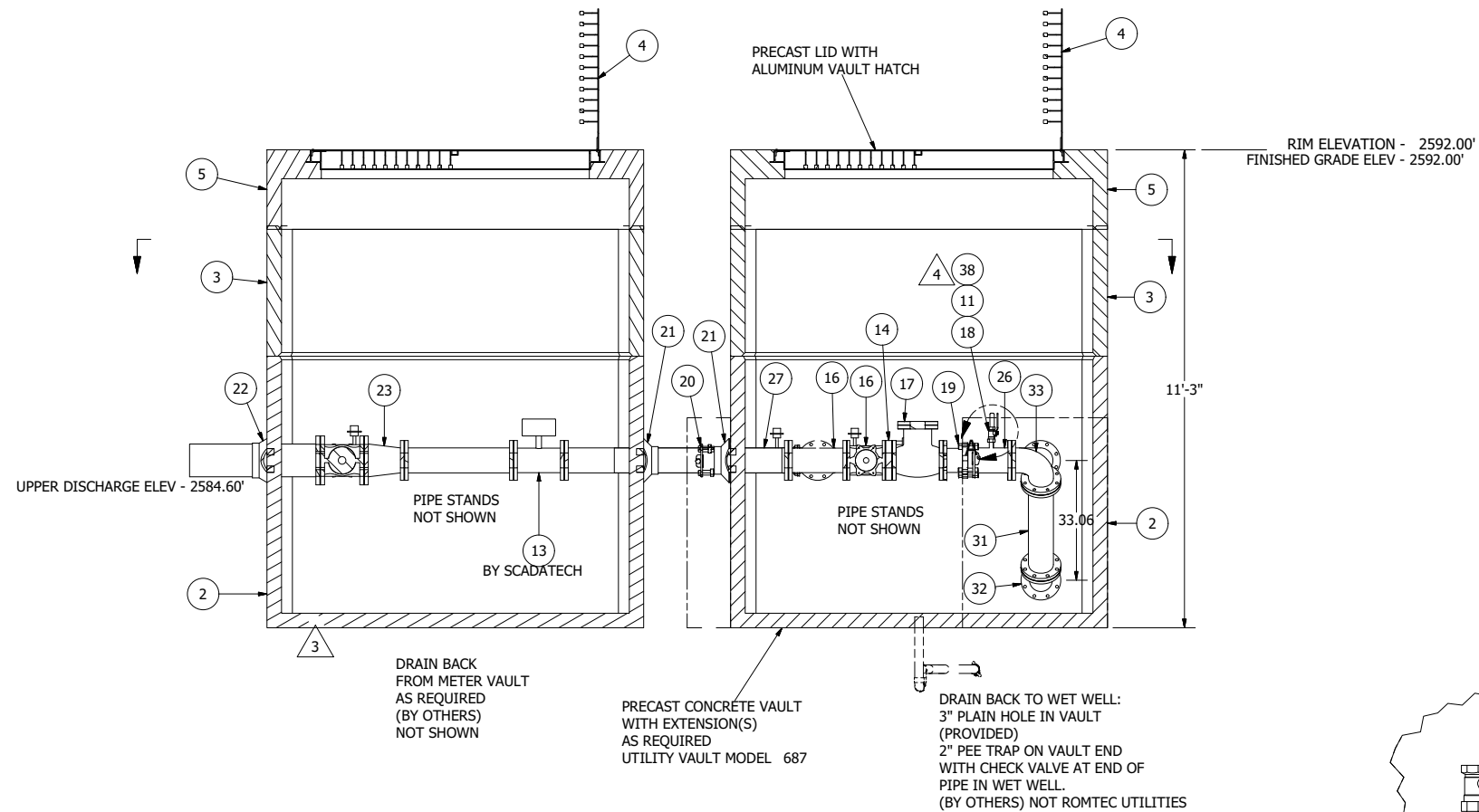
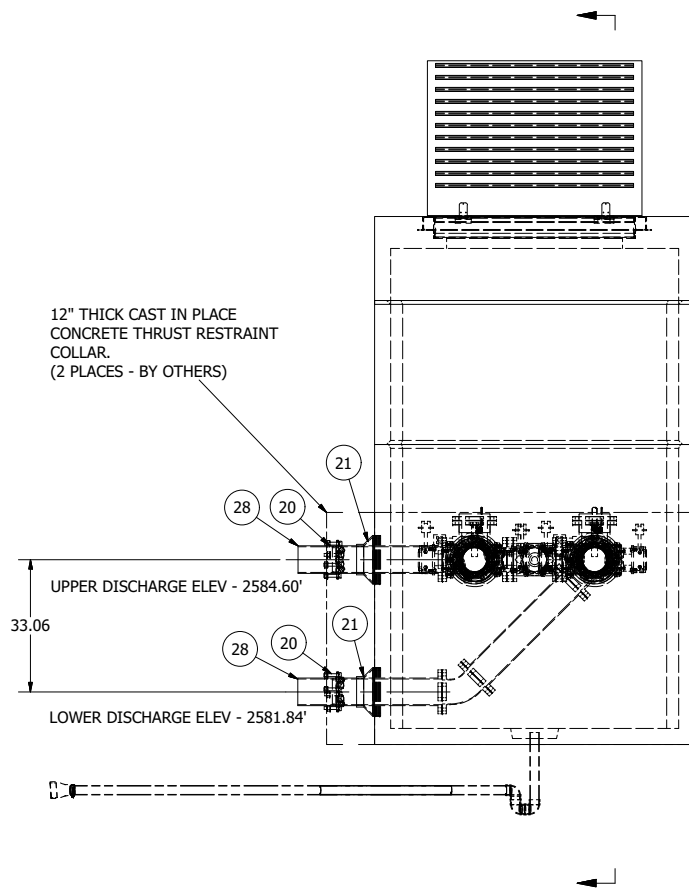
LIFT STATION #4  
6" - 8' DIA WET WELL

SHEET  
1 OF 2

JOB NUMBER  
RMTC  
0000

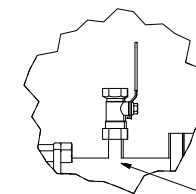


NOTE: VAULT TOP SLABS ARE H-20 OCCASIONAL RATED



NOTE: ALL DIMENSIONS AND ELEVATIONS SHOWN ARE NOMINAL DIMENSIONS. IT IS THE RESPONSIBILITY OF THE ON-SITE CONTRACTOR OR ROMTEC UTILITIES CUSTOMER (NOT ROMTEC UTILITIES) TO VERIFY THE ACCURACY OF ANY CRITICAL DIMENSIONS OR ELEVATIONS PRIOR TO SETTING OR INSTALLING ANY EQUIPMENT.

687 VALVE VAULT  
6" PIPING AND VALVES  
WITH METER VAULT



DETAIL A  
SCALE 1 / 8

© 2009 ROMTEC INC. ALL RIGHTS RESERVED. THESE PLANS AND DRAWINGS MAY NOT BE REPRODUCED, ADAPTED, OR FURTHER DISTRIBUTED, AND NO COMPONENTS MAY BE CONSTRUCTED FROM THESE PLANS, WITHOUT WRITTEN PERMISSION OF ROMTEC, INC.

REVISION HISTORY		DATE	DESCRIPTION	REV
5	REVISED PER LAUNCH MEETING	03/15/10	AM	
4	CHANGES PER 2/10/10 COMMENTS	2/12/10	AD	
3	UPDATED PER 1/14/10 COMMENTS	1-25-10	AD	
2	ADDED BY SCADATECH NOTE	12/22/09	AM	
1	COMPONENT DRAWING	12/17/09	AM	

REVISION HISTORY		DATE	DESCRIPTION	REV
5	REVISED PER LAUNCH MEETING	03/15/10	AM	
4	CHANGES PER 2/10/10 COMMENTS	2/12/10	AD	
3	UPDATED PER 1/14/10 COMMENTS	1-25-10	AD	
2	ADDED BY SCADATECH NOTE	12/22/09	AM	
1	COMPONENT DRAWING	12/17/09	AM	

COMPONENT  
DRAWING

**ROMTEC  
UTILITIES**  
18240 NORTH BANK ROAD  
ROSEBURG, OREGON 97470  
(541) 496-9678  
FAX (541) 496-0804

QUADVA, INC.  
JERRY SUMMERS  
LIFT STATION #4  
6" - 687 VALVE VAULT

SHEET  
2 OF 2

JOB NUMBER  
RMTC  
0000