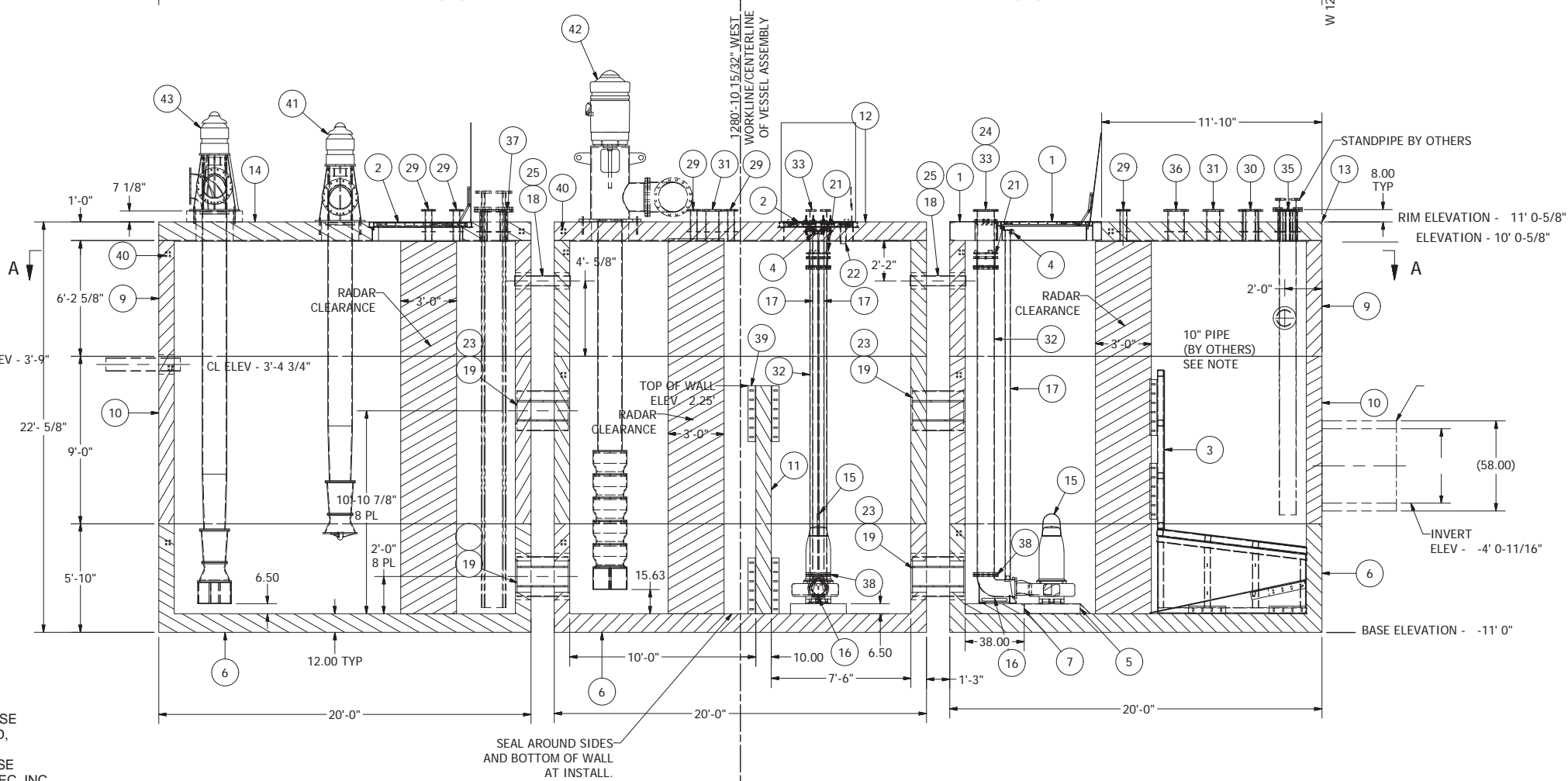
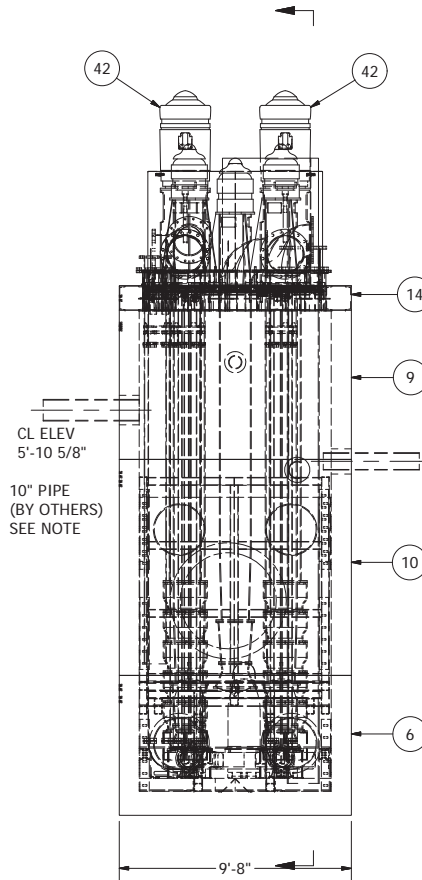
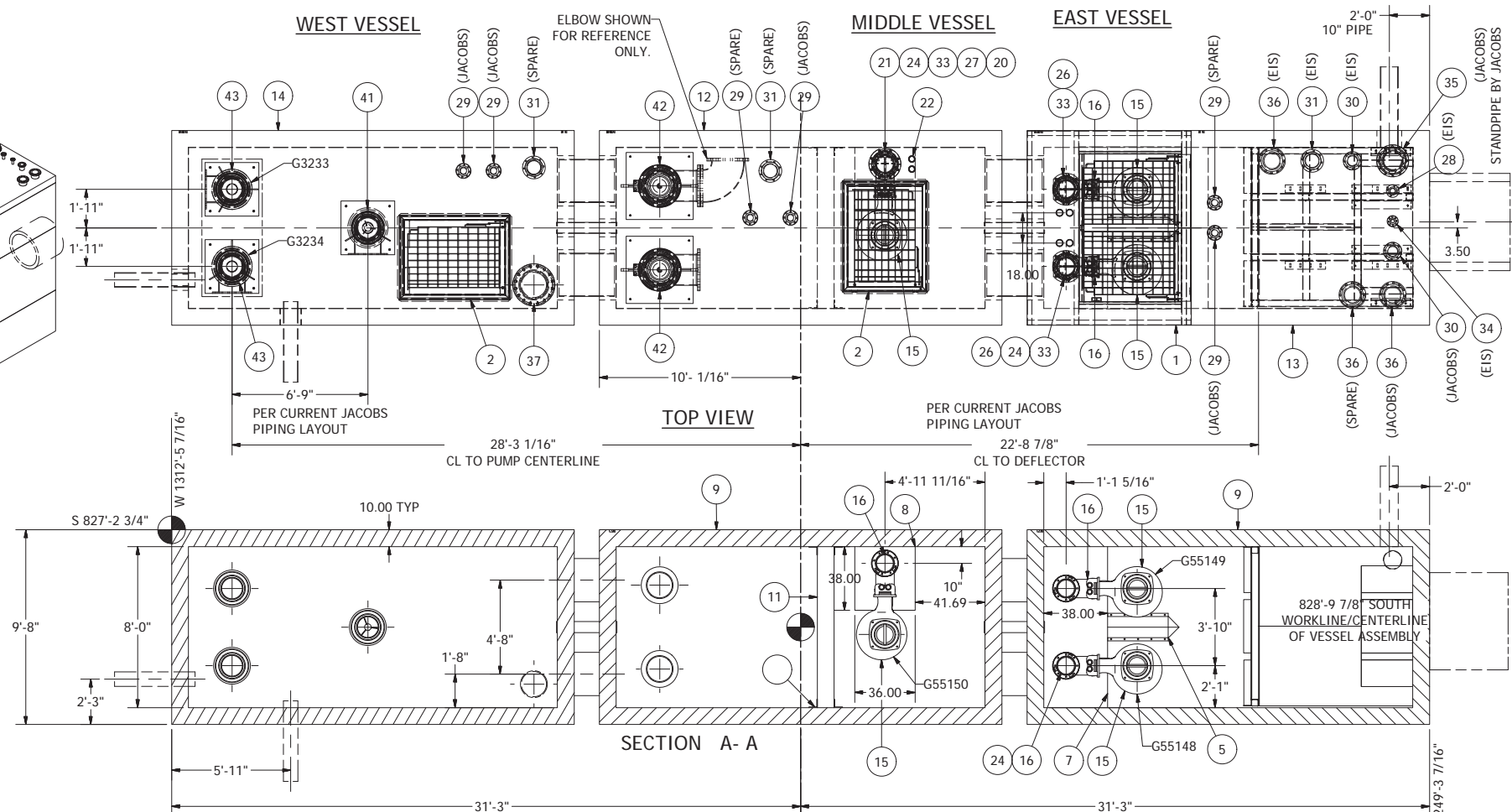
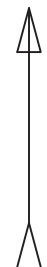
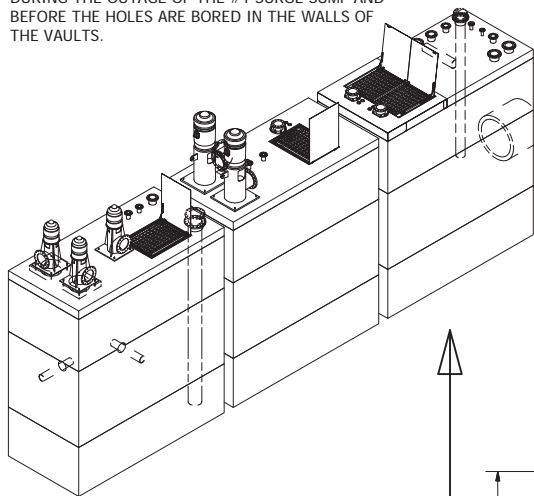


CENTERLINE - COORDINATE NODE
1280'-10 15/32" WEST
828'-9 7/8" SOUTH

NOTE: ALL OF THE DIMENSIONS AND ELEVATIONS OF THE "BY OTHERS" PIPES SHALL BE CONFIRMED DURING THE OUTAGE OF THE #1 SURGE SUMP AND BEFORE THE HOLES ARE BORED IN THE WALLS OF THE VAULTS.



NOTES:
FOR PUMP OPERATION SET POINTS SEE SHEET 2 OF 3.

ITEM #21 & #38 ALLOWABLE VERTICLE LOAD IS 20,000LBS. SIDE LOADING IS NOT RECOMMENDED. LINK SEALS ARE NOT DESIGNED FOR SIDE LOADING. TO RESTRAIN SIDE LOADING CUSTOM PIPE SUPPORTS SHOULD BE INSTALLED PER THE APPLICATION.

CONCRETE VESSELS TO HAVE GROUNDING PLATES. BURNDY TYPE YGF. SEE SUBMITTAL FOR DATA SHEET. CONNECTING WITH REBAR TIES IS UNACCEPTABLE.

LOCATE THE GROUND CONNECTORS NEAR THE TOP OF THE VAULT BASE AND THE VAULT RISER.

NOTE: ALL DIMENSIONS AND ELEVATIONS SHOWN ARE NOMINAL DIMENSIONS. IT IS THE RESPONSIBILITY OF THE ON-SITE CONTRACTOR OR ROMTEC UTILITIES CUSTOMER (NOT ROMTEC UTILITIES) TO VERIFY THE ACCURACY OF ANY CRITICAL DIMENSIONS OR ELEVATIONS PRIOR TO SETTING OR INSTALLING ANY EQUIPMENT.

ALL MATERIALS SHOWN ON THIS SHEET WILL BE SUPPLIED BY ROMTEC UTILITIES AND DELIVERED TO THE SITE AFTER THE HOLE HAS BEEN EXCAVATED AND SHORED. THE CONTRACTOR SHALL SUPPLY A CRANE OF SUFFICIENT SIZE TO LOWER ALL THE CONCRETE PIECES INTO THE HOLE SAFELY. THE CONTRACTOR SHALL INSTALL THE WET WELL (AND VALVE VAULT AND METERING VAULT IF APPLICABLE). ROMTEC UTILITIES WILL PROVIDE A REPRESENTATIVE FOR TECHNICAL ASSISTANCE ON THE DAY OF INSTALLATION TO ANSWER ANY QUESTIONS THAT MAY ARISE. THE CONTRACTOR IS RESPONSIBLE FOR ALL PLUMBING AND ELECTRICAL CONNECTIONS AND INSTALLATION. ITEMS NOTED AS "BY OTHERS" WILL BE PROVIDED AND INSTALLED BY THE CONTRACTOR. ROMTEC UTILITIES WILL NOT INSTALL ANY OF THE COMPONENTS SHOWN ON THIS PAGE.

© 2010 ROMTEC INC. ALL RIGHTS RESERVED. THESE PLANS AND DRAWINGS MAY NOT BE REPRODUCED, ADAPTED, OR FURTHER DISTRIBUTED, AND NO COMPONENTS MAY BE CONSTRUCTED FROM THESE PLANS, WITHOUT WRITTEN PERMISSION OF ROMTEC, INC.

7	RAISED MIDDLE VESSEL WALL - 6/17/10 EMAIL	06/18/10	AM
6	UPDATED PER 07/07/10 MARK-UP DRAWINGS	06/14/10	AM
5	UPDATE PER 05/19/10 COMMENTS	05/20/10	AM
4	UPDATE PER CUSTOMER MARK-UP	04/07/10	AM
3	REVISED PER CONFERENCE CALL WITH CUSTOMER	03/19/10	AM
2	UPDATED PER CUST DUTY SPEC DATED JAN 18, 2010	02/04/10	AM
1	COMPONENT DRAWING	10/12/09	AM
REV	DESCRIPTION	DATE	APPROV

VERIFY SCALE BAR IS ONE INCH ON ORIGINAL DRAWING 0 1" IF NOT ONE INCH ON THIS SHEET, ADJUST SCALE ACCURATELY	DATE - 03/18/10
---	-----------------

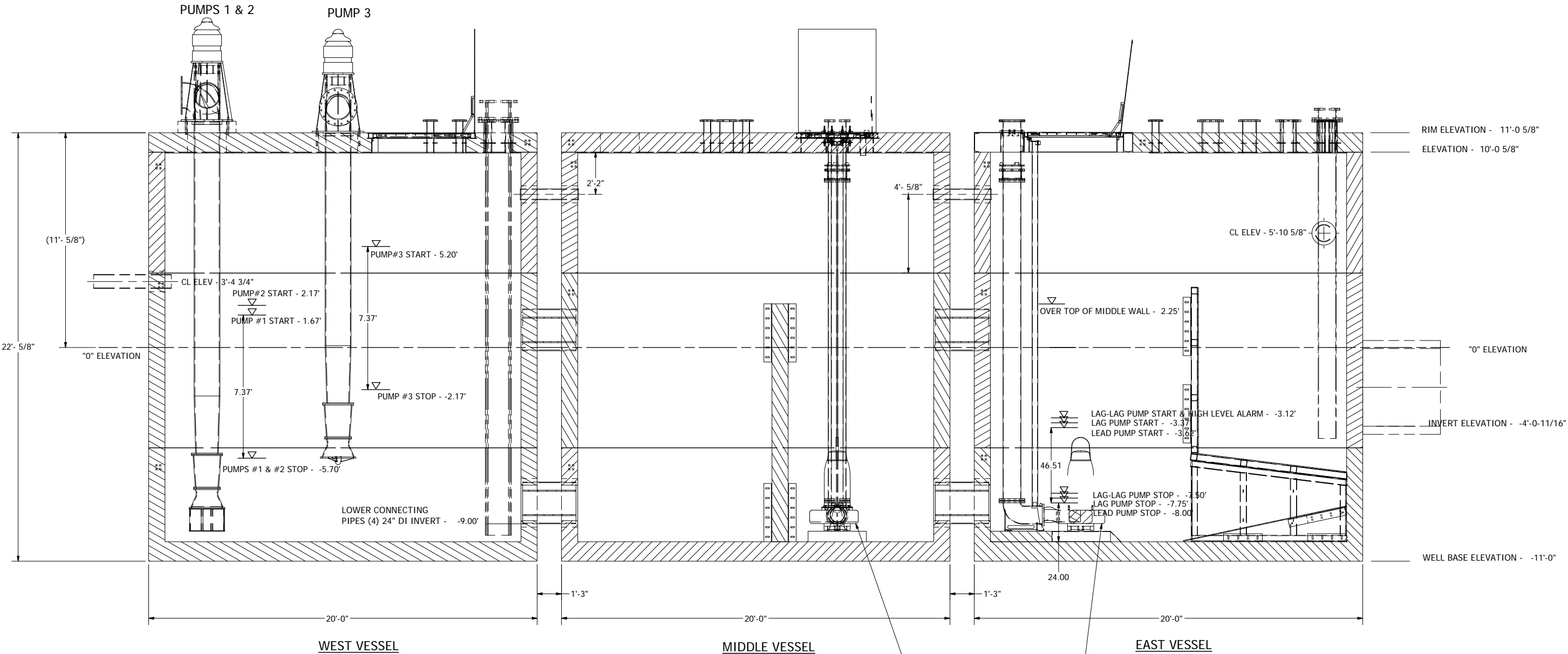
ROMTEC UTILITIES
18240 NORTH BANK ROAD
ROSEBURG, OREGON 97470
(541) 496-9678
FAX (541) 496-0804

CHALMETTE REFINING, LLC
3 VAULT PUMPING SYSTEM

SHEET
1 OF 3

JOB NUMBER
RMTC
0000

NOTE: ALL OPERATIONAL SET POINTS SHOWN BELOW ARE TO BE DETERMINED BY OTHERS (NOT ROMTEC UTILITIES, INC.)



© 2010 ROMTEC INC. ALL RIGHTS RESERVED. THESE PLANS AND DRAWINGS MAY NOT BE REPRODUCED, ADAPTED, OR FURTHER DISTRIBUTED, AND NO COMPONENTS MAY BE CONSTRUCTED FROM THESE PLANS, WITHOUT WRITTEN PERMISSION OF ROMTEC, INC.

(3) PUMPS PURCHASED BY JACOBS ARE FLYGT MODEL NP3301.095

SPECIAL NOTE:
Operation set points for the #1 Surge Sump Upgrade are to be determined by others, not Romtec Utilities.
Romtec Utilities is not supplying any pumps, pump controls or level sensing for this pump station.
Any narrative that Romtec Utilities has supplied in the 7/5/10 dated Scope of Supply and Design Submittal is provided only to determine if there is enough volume in the vessels.
The actual suggested starts per hour of all the pumps for this project, is the customer's responsibility, not Romtec Utilities.
The Romtec Utilities' 4.01 Operation Narrative in the Romtec Utilities' Scope of Supply and Design Submittal is only an example of how one might set up the start and stop points for this pump station.
Romtec Utilities does not know where to, or when, the pumps for this pump station should pump. And Romtec Utilities has no knowledge of the actual proposed number of starts and stops recommended for all the pumps.
The complete pump operation of this pump station is to be determined by others, not Romtec Utilities.

REV	DESCRIPTION	DATE	APPROVED
9	UPDATED PUMP OPERATION ELEVATIONS	1-12-11	AD
8	REVISED PER PRODUCTION DRAWING	08/19/10	AM
7	REMOVED LOWER 10" INLET PIPE PER COMMENTS	7/22/10	AD
6	ADDED OPERATIONAL SET POINT NOTE	07/20/10	AM
5	UPDATED ELEVATIONS PER 12in FLOOR CHANGE	07/16/10	AD
4	ADDED MIDDLE VESSEL WALL - 06/17/10 EMAIL	06/18/10	AM
3	UPDATED PER 06/07/10 MARK-UP DRAWINGS	06/14/10	AM
2	UPDATED PER 05/19/10 COMMENTS	05/20/10	AM
1	UPDATED LEAD AND LAG FOR MIDDLE VESSEL	4/12/10	AD

COMPONENT
DRAWING

ROMTEC UTILITIES
18240 NORTH BANK ROAD
ROSEBURG, OREGON 97470
(541) 496-9678
FAX (541) 496-0804

CHALMETTE REFINING, LLC
ELEVATION DETAIL

SHEET
2 OF 3

JOB NUMBER
RMTC
0000