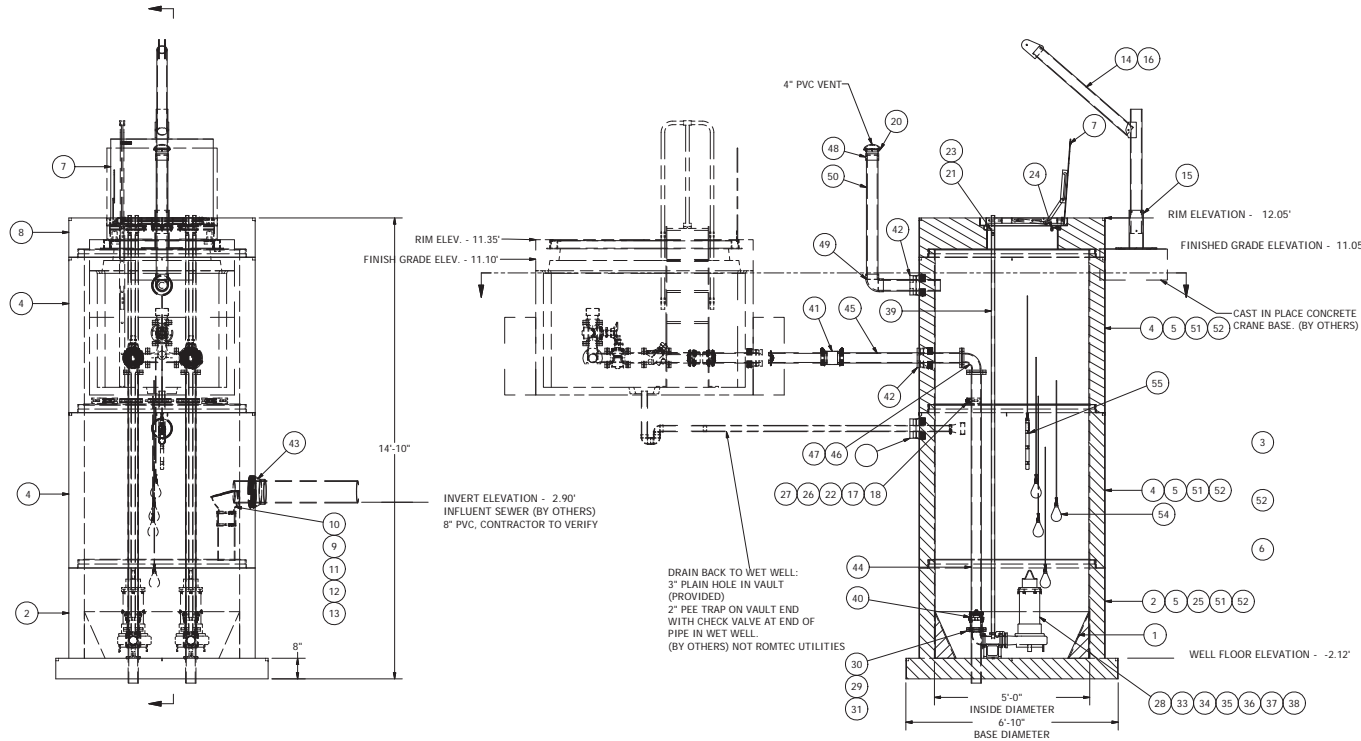


NOTE: WET WELL TOP SLAB IS PEDESTRIAN RATED



NOTE: ALL DIMENSIONS AND ELEVATIONS SHOWN ARE NOMINAL DIMENSIONS. IT IS THE RESPONSIBILITY OF THE ON-SITE CONTRACTOR OR ROMTEC UTILITIES CUSTOMER (NOT ROMTEC UTILITIES) TO VERIFY THE ACCURACY OF ANY CRITICAL DIMENSIONS OR ELEVATIONS PRIOR TO SETTING OR INSTALLING ANY EQUIPMENT.

© 2010 ROMTEC INC. ALL RIGHTS RESERVED. THESE PLANS AND DRAWINGS MAY NOT BE REPRODUCED, ADAPTED, OR FURTHER DISTRIBUTED, AND NO COMPONENTS MAY BE CONSTRUCTED FROM THESE PLANS, WITHOUT WRITTEN PERMISSION OF ROMTEC, INC.

REV	DESCRIPTION	DATE	APPROV
7	MOVED CRANE BASE SLAB TO FINISH GRADE	4/9/12	AD
6	UPDATED PER 3-26-12 COMMENTS	3/29/12	AD
5	UPDATED PER 3-26-12 COMMENTS	3/29/12	AD
4	UPDATED PER ELEVATION COMMENTS 2/3 & 2/6	2/7/12	AD
3	UPDATE PER ACTUAL ELEVATIONS	10/30/12	AD
2	UPDATE PER 9/16/10 MEETING NOTES	10/22/10	AD
1	CONSTRUCTION	09/14/10	AM
0	ISSUED FOR PERMITTING	09/14/10	AM

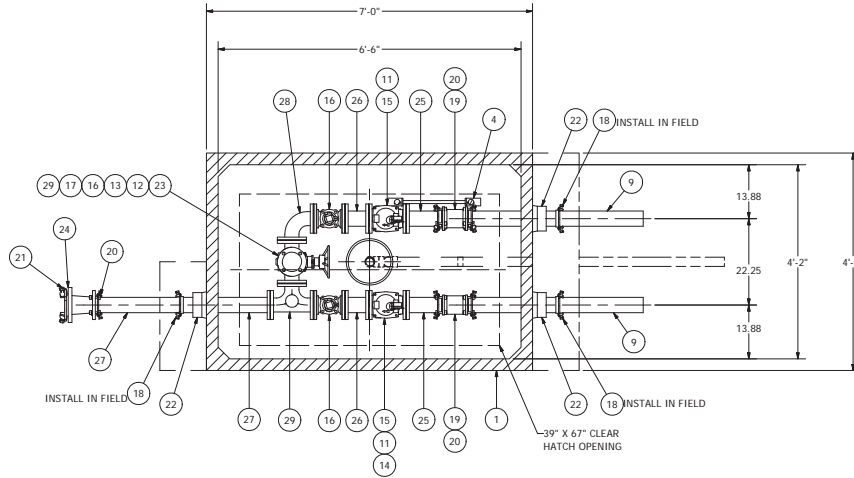
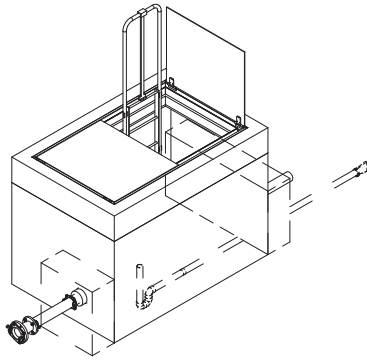
**COMPONENT
DRAWING**

**ROMTEC
UTILITIES**
18240 NORTH BANK ROAD
ROSEBURG, OREGON 97470
(541) 496-9678
FAX (541) 496-0804

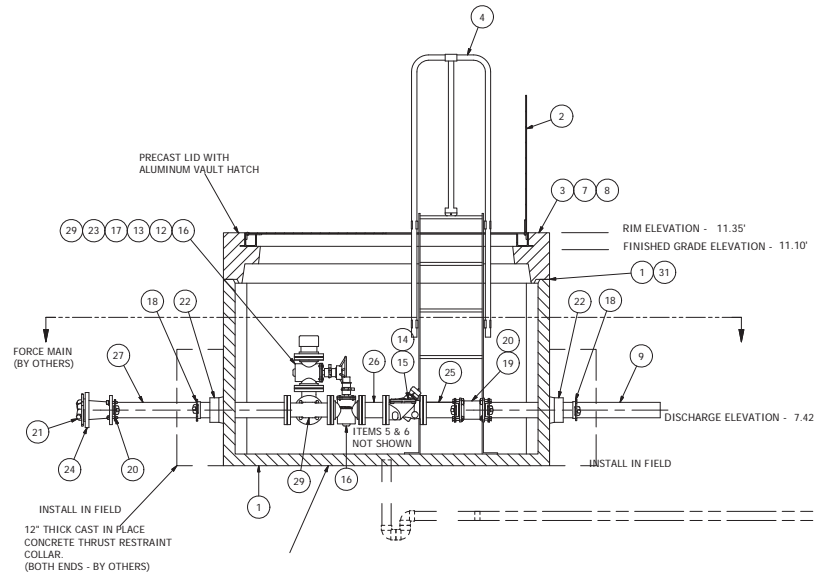
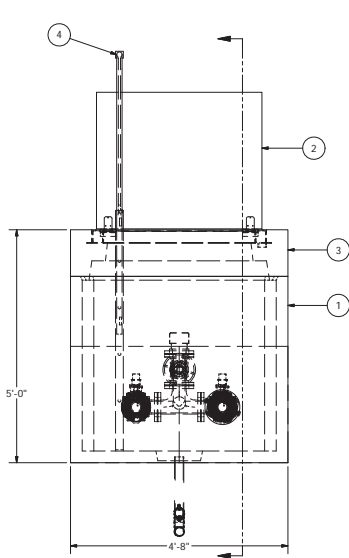
SANTA BARBARA CO PARKS
JUAN BELTRANENA
GOLETA BEACH
3" - 5' DIA WET WELL

SHEET
1 OF 2

JOB NUMBER
**RMTC
0000**



NOTE: VAULT TOP SLAB IS PEDESTRIAN RATED



NOTE: ALL DIMENSIONS AND ELEVATIONS SHOWN ARE NOMINAL DIMENSIONS. IT IS THE RESPONSIBILITY OF THE ON-SITE CONTRACTOR OR ROMTEC UTILITIES CUSTOMER (NOT ROMTEC UTILITIES) TO VERIFY THE ACCURACY OF ANY CRITICAL DIMENSIONS OR ELEVATIONS PRIOR TO SETTING OR INSTALLING ANY EQUIPMENT.

© 2010 ROMTEC INC. ALL RIGHTS RESERVED. THESE PLANS AND DRAWINGS MAY NOT BE REPRODUCED, ADAPTED, OR FURTHER DISTRIBUTED, AND NO COMPONENTS MAY BE CONSTRUCTED FROM THESE PLANS, WITHOUT WRITTEN PERMISSION OF ROMTEC, INC.

REVISION HISTORY		DATE	APPROVAL
5	UPDATE PER 3/24/12 COMMENTS	3/29/12	AD
4	UPDATE PER 2/8 & 2/8 COMMENTS	02/07/12	AD
3	UPDATE PER REAL ELEVATIONS	01/03/12	AD
2	UPDATE PER 9/16/10 MEETING NOTES	09/22/10	AM
1	CONSTRUCTION	09/22/10	AM
REV	DESCRIPTION	DATE	APPROVAL

ROMTEC UTILITIES
 18240 NORTH BANK ROAD
 ROSEBURG, OREGON 97470
 (541) 496-9678
 FAX (541) 496-0804

SANTA BARBARA CO PARKS
 JUAN BELTRANENA
GOLETA BEACH
3" - 575 VALVE VAULT

SHEET
2 OF 2

JOB NUMBER
RMTC 0000