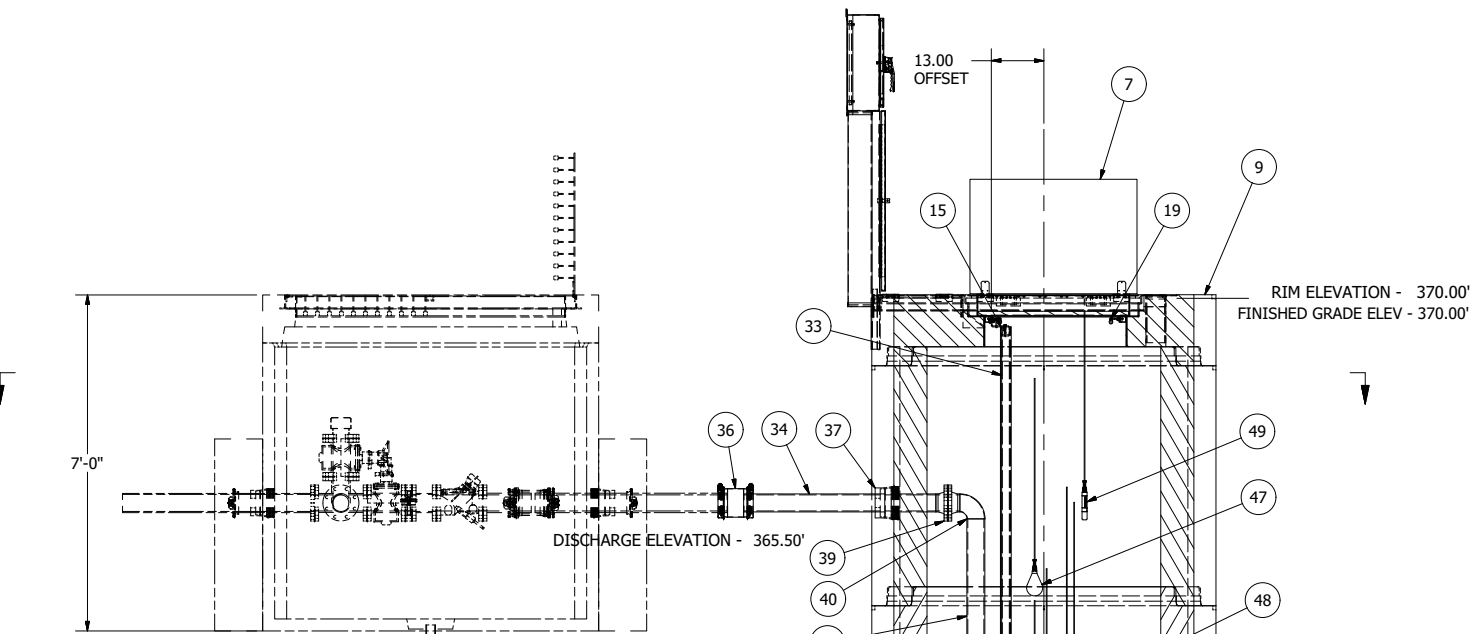
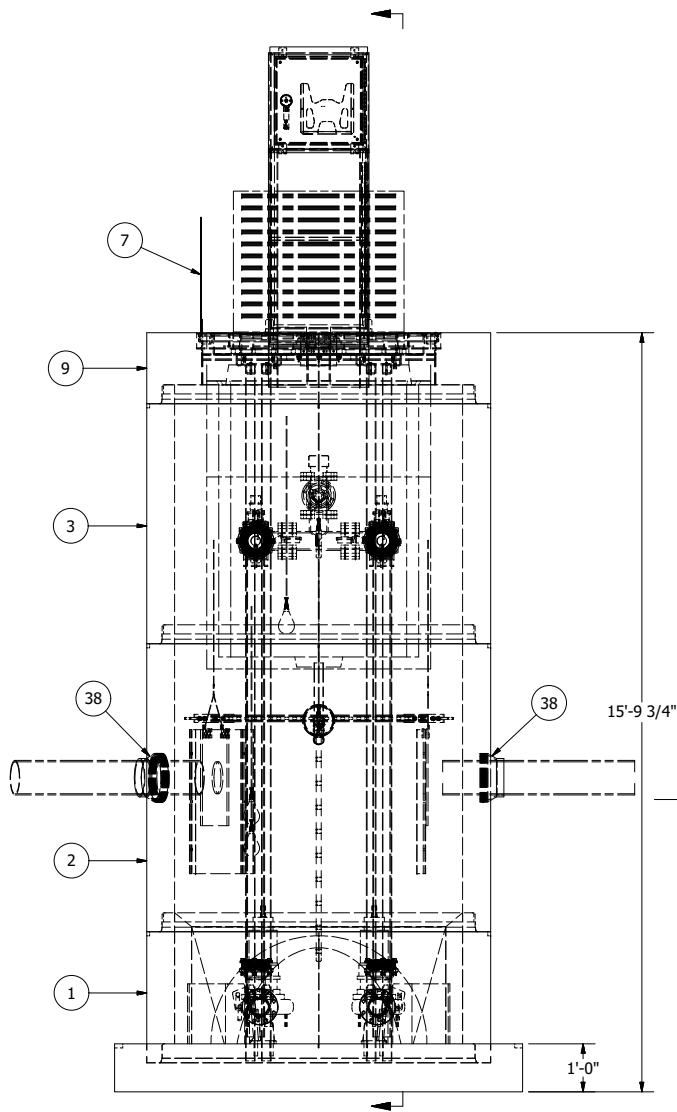


577 VALVE VAULT ASSEMBLY  
SEE SHEET 2

NOTE: WET WELL TOP SLAB IS H-20 OCCASIONAL TRAFFIC RATED



577 VALVE VAULT ASSEMBLY  
SEE SHEET 2

INVERT ELEVATION - 360.50'  
INFLUENT SEWER (BY OTHERS)  
8" PVC  
CUSTOMER VERIFY SIZE, TYPE,  
ORIENTATION AND ELEVATION.  
2 PLACES

SENSOR AND ELEVATION TABLE		
LEVEL ELEVATION	DISTANCE BETWEEN POINTS	SET POINT DESCRIPTION
360.50		SEWER INVERT IN
360.19		HIGH LEVEL ALARM
	0.50	SENSOR SPACING
359.69		LAG PUMP START
	0.50	SENSOR SPACING
359.19		LEAD PUMP START
	2.50	SENSOR SPACING
356.69		PUMP STOP
	1.50	DISTANCE TO FLOOR
355.19		FLOOR ELEVATION

FIELD PREPARE THE EXTERIOR CONCRETE AS PER TNEC APPLICATION REQUIREMENTS. FIELD APPLY TO EXTERIOR TNEC-LINER SERIES 61 - TWO COATS 4-6 MILS THICK. 8-12 MILS THICK TOTAL D.F.T

NOTE: ALL DIMENSIONS AND ELEVATIONS SHOWN ARE NOMINAL DIMENSIONS. IT IS THE RESPONSIBILITY OF THE ON-SITE CONTRACTOR OR ROMTEC UTILITIES CUSTOMER (NOT ROMTEC UTILITIES) TO VERIFY THE ACCURACY OF ANY CRITICAL DIMENSIONS OR ELEVATIONS PRIOR TO SETTING OR INSTALLING ANY EQUIPMENT.

**6' DIAMETER WET WELL  
4" DISCHARGE PIPING  
EBARA PUMPS  
4" 577 VALVE VAULT**

ALL MATERIALS SHOWN ON THIS SHEET WILL BE SUPPLIED BY ROMTEC UTILITIES AND DELIVERED TO THE SITE AFTER THE HOLE HAS BEEN EXCAVATED AND SHORED. THE CONTRACTOR SHALL SUPPLY A CRANE OF SUFFICIENT SIZE TO LOWER ALL THE CONCRETE PIECES INTO THE HOLE SAFELY. THE CONTRACTOR SHALL INSTALL THE WET WELL (AND VALVE VAULT AND METERING VAULT IF APPLICABLE). ROMTEC UTILITIES WILL PROVIDE A REPRESENTATIVE FOR TECHNICAL ASSISTANCE ON THE DAY OF INSTALLATION TO ANSWER ANY QUESTIONS THAT MAY ARISE. THE CONTRACTOR IS RESPONSIBLE FOR ALL PLUMBING AND ELECTRICAL CONNECTIONS AND INSTALLATION. ITEMS NOTED AS "BY OTHERS" WILL BE PROVIDED AND INSTALLED BY THE CONTRACTOR. ROMTEC UTILITIES WILL NOT INSTALL ANY OF THE COMPONENTS SHOWN ON THIS PAGE.

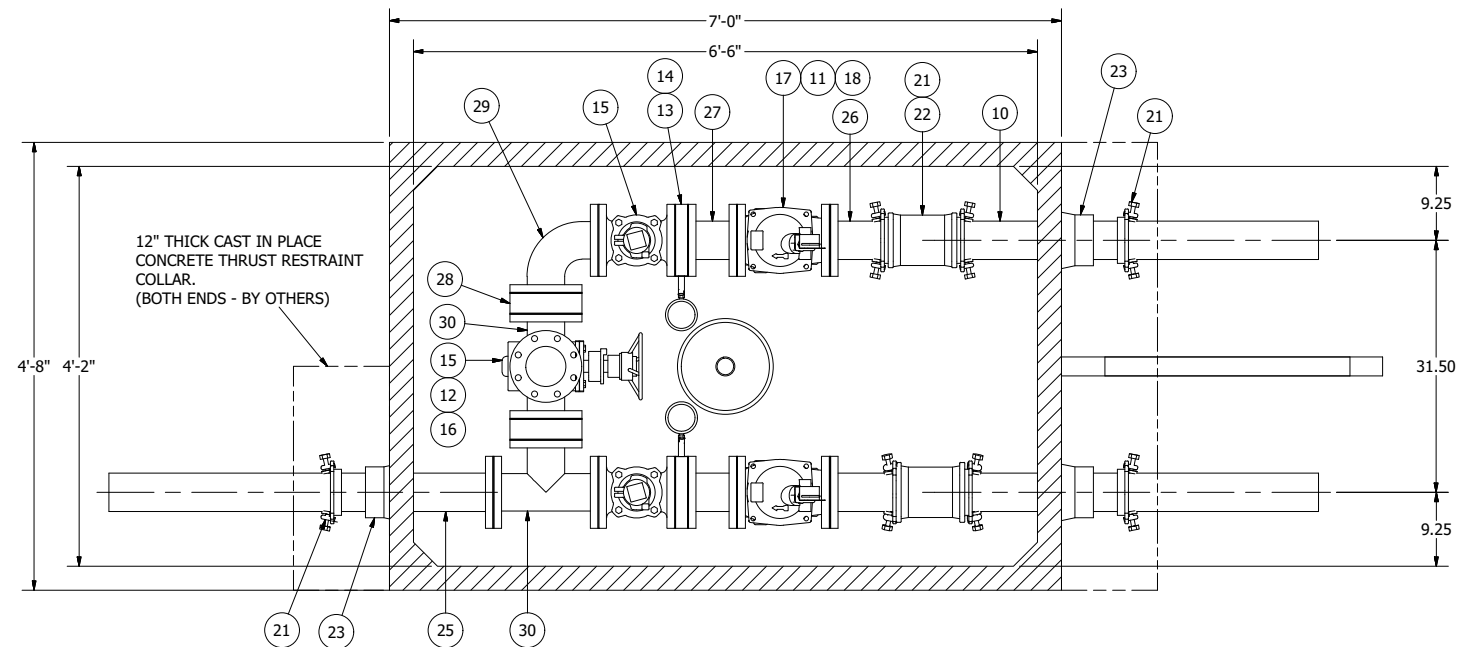
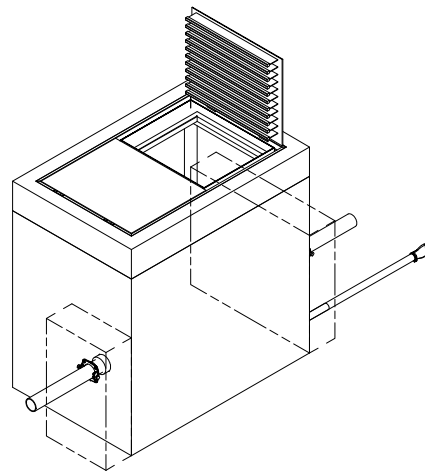
REV	DESCRIPTION	DATE	REVISION HISTORY
7	CHANGED TO EBARA PUMPS	10/19/10	AM
5	ADDED CORED HOLE FOR DRAIN BACK AND BOOT	8/5/10	AD
4	POWER CHANGED FROM 460V TO 200V	7/29/10	AD
3	CHANGED ORIENTATION OF INLET TO 16 DEG PER CUSTOMER	04/26/10	AM
2	ELEVATION CHANGES PER CUSTOMER	04/20/10	AM
1	COMPONENT DRAWING	03/09/10	AM
	REV		
	DATE	2-19-10	

VERIFY SCALE  
BAR IS ONE INCH ON ORIGINAL DRAWING  
1"  
IF NOT ONE INCH ON THIS SHEET, ADJUST SCALES ACCORDINGLY  
0  
DSN - AD  
DRN - AD  
CKD - AD  
DATE - 2-19-10

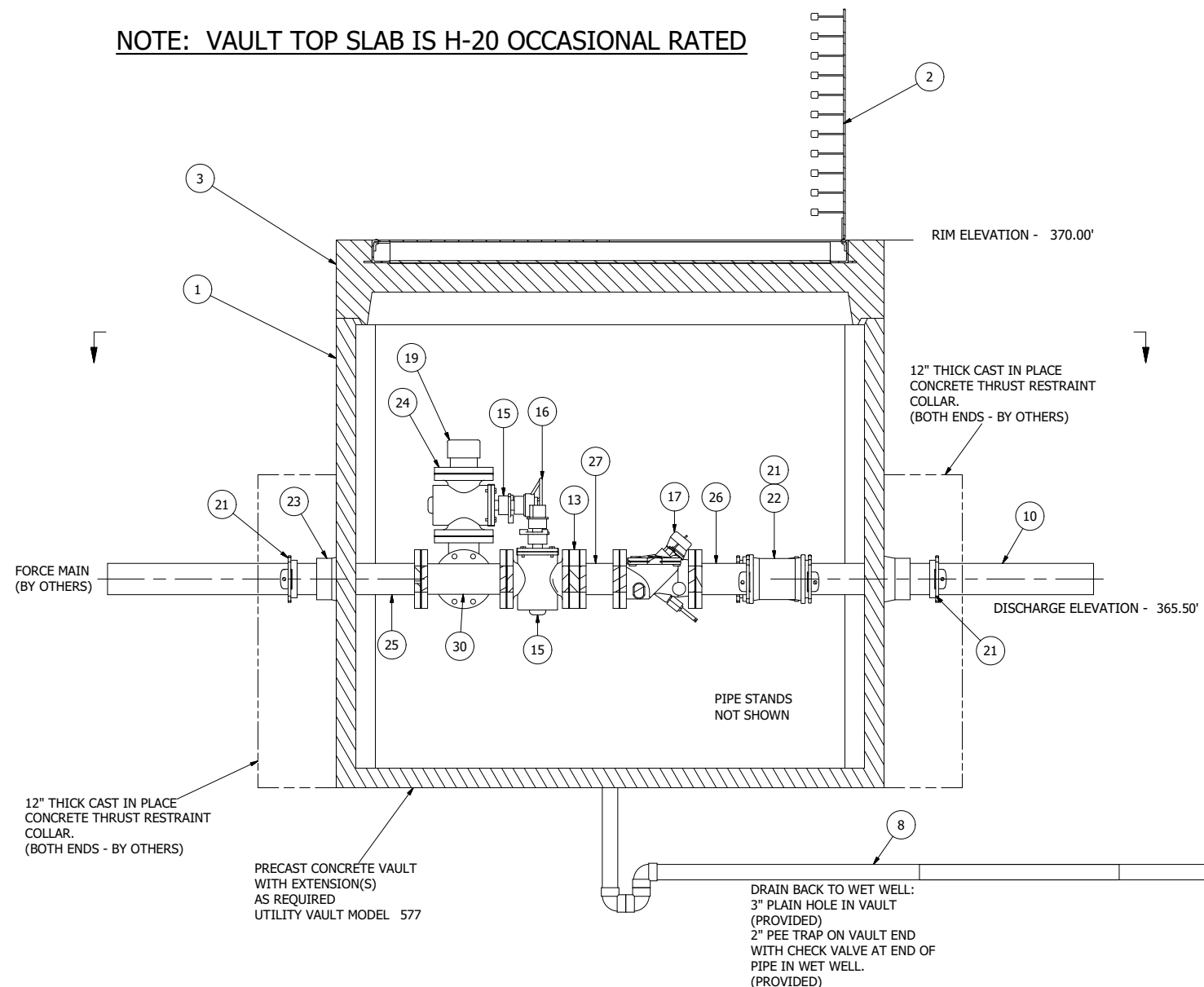
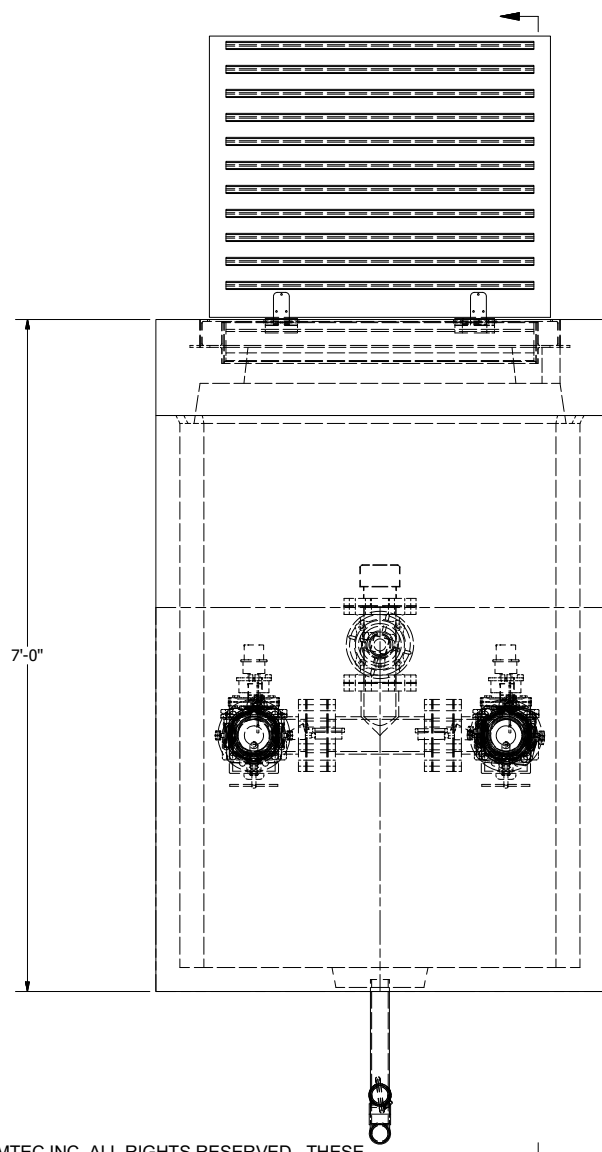
**ROMTEC UTILITIES**  
18240 NORTH BANK ROAD  
ROSEBURG, OREGON 97470  
(541) 496-9678  
FAX (541) 496-0804

COMPONENT DRAWING

GRAND RONDE HOUSING AUTH.  
6' WET WELL 4" VALVE VAULT



**NOTE: VAULT TOP SLAB IS H-20 OCCASIONAL RATED**



NOTE: ALL DIMENSIONS AND ELEVATIONS SHOWN ARE NOMINAL DIMENSIONS. IT IS THE RESPONSIBILITY OF THE ON-SITE CONTRACTOR OR ROMTEC UTILITIES CUSTOMER (NOT ROMTEC UTILITIES) TO VERIFY THE ACCURACY OF ANY CRITICAL DIMENSIONS OR ELEVATIONS PRIOR TO SETTING OR INSTALLING ANY EQUIPMENT.

**577 VALVE VAULT  
4" PIPING AND VALVES**

© 2009 ROMTEC INC. ALL RIGHTS RESERVED. THESE PLANS AND DRAWINGS MAY NOT BE REPRODUCED, ADAPTED, OR FURTHER DISTRIBUTED, AND NO COMPONENTS MAY BE CONSTRUCTED FROM THESE PLANS, WITHOUT WRITTEN PERMISSION OF ROMTEC, INC.

VERIFY SCALE  
BAR IS ONE INCH ON ORIGINAL DRAWING  
0 IF NOT ONE INCH ON THIS SHEET, ADJUST SCALES ACCORDINGLY  
DSN - AD  
DRN - AD  
CKD - AD  
DATE - 2-22-10

**COMPONENT DRAWING**

**ROMTEC UTILITIES**  
18240 NORTH BANK ROAD  
ROSEBURG, OREGON 97470  
(541) 496-9678  
FAX (541) 496-0804

**GRAND RONDE HOUSING AUTH.  
4" VALVE VAULT**

SHEET  
**2 OF 2**  
JOB NUMBER  
**RMTC  
0000**

REV	DESCRIPTION	DATE	APPROV
2	ADDED DRAIN BACK COMPONENT DRAWING	8-5-10	AD
1		03-05-10	AD
REV		DATE	APPROV