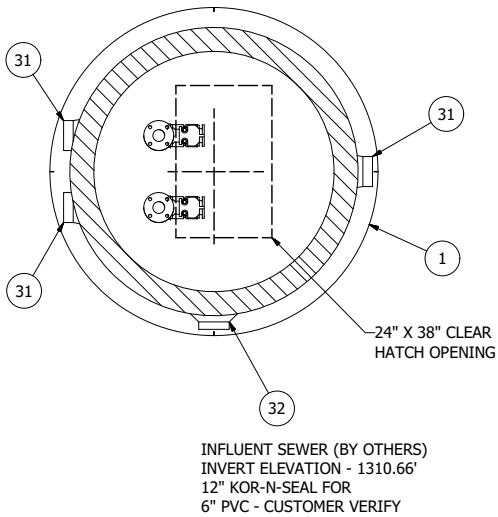
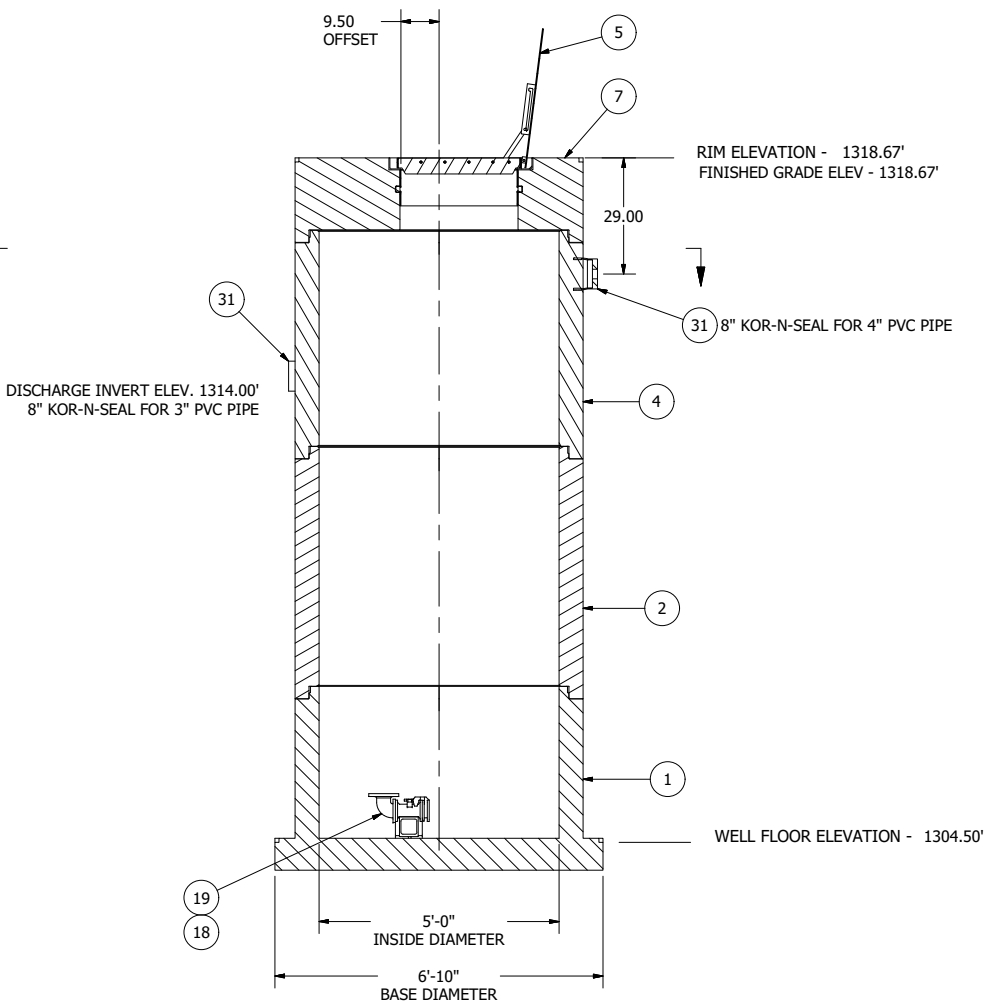
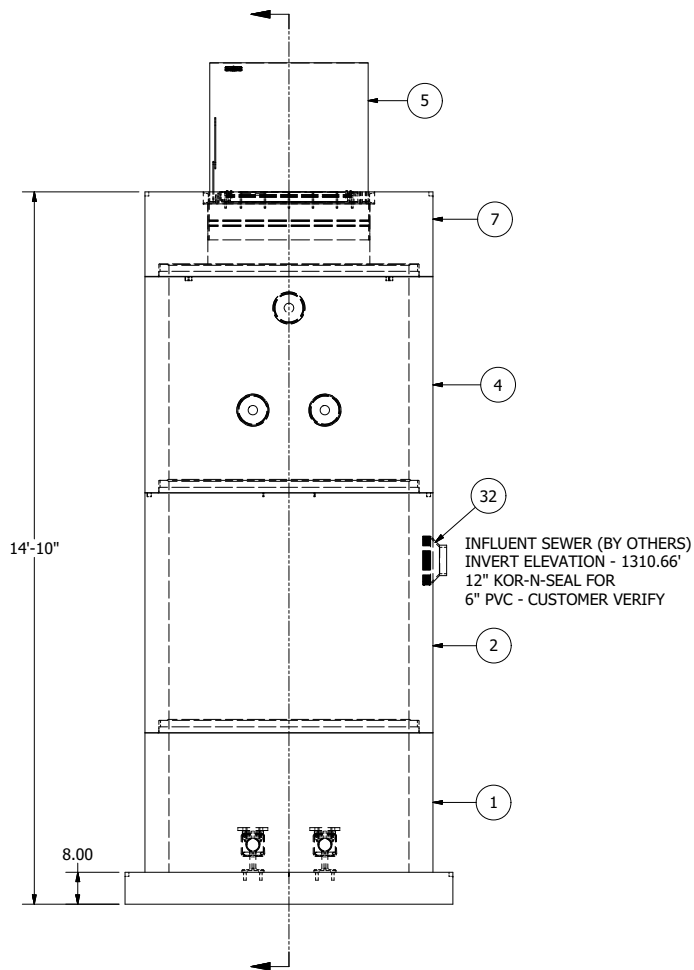


SENSOR AND ELEVATION TABLE		
LEVEL ELEVATION	DISTANCE BETWEEN POINTS	SET POINT DESCRIPTION
1310.66		SEWER INVERT IN
1309.50		HIGH LEVEL ALARM
	0.50	SENSOR SPACING
1309.00		LAG PUMP START
	0.50	SENSOR SPACING
1308.50		LEAD PUMP START
	2.00	SENSOR SPACING
1306.50		PUMP STOP
	2.00	DISTANCE TO FLOOR
1304.50		FLOOR ELEVATION



NOTE: WET WELL TOP SLAB IS AIRCRAFT RATED



NOTE: ALL DIMENSIONS AND ELEVATIONS SHOWN ARE NOMINAL DIMENSIONS. IT IS THE RESPONSIBILITY OF THE ON-SITE CONTRACTOR OR ROMTEC UTILITIES CUSTOMER (NOT ROMTEC UTILITIES) TO VERIFY THE ACCURACY OF ANY CRITICAL DIMENSIONS OR ELEVATIONS PRIOR TO SETTING OR INSTALLING ANY EQUIPMENT.

5' DIAMETER WET WELL
3" DISCHARGE PIPING
EBARA ELBOWS - RU SUPPLY DWG
EXTERNAL SHUTOFF

ALL MATERIALS SHOWN ON THIS SHEET WILL BE SUPPLIED BY ROMTEC UTILITIES AND DELIVERED TO THE SITE AFTER THE HOLE HAS BEEN EXCAVATED AND SHORED. THE CONTRACTOR SHALL SUPPLY A CRANE OF SUFFICIENT SIZE TO LOWER ALL THE CONCRETE PIECES INTO THE HOLE SAFELY. THE THE CONTRACTOR SHALL INSTALL THE WET WELL (AND VALVE VAULT AND METERING VAULT IF APPLICABLE). ROMTEC UTILITIES WILL PROVIDE A REPRESENTATIVE FOR TECHNICAL ASSISTANCE ON THE DAY OF INSTALLATION TO ANSWER ANY QUESTIONS THAT MAY ARISE. THE CONTRACTOR IS RESPONSIBLE FOR ALL PLUMBING AND ELECTRICAL CONNECTIONS AND INSTALLATION. ITEMS NOTED AS "BY OTHERS" WILL BE PROVIDED AND INSTALLED BY THE CONTRACTOR. ROMTEC UTILITIES WILL NOT INSTALL ANY OF THE COMPONENTS SHOWN ON THIS PAGE.

VERIFY SCALE
BAR IS ONE INCH ON
ORIGINAL DRAWING
0 1"
IF NOT ONE INCH ON
THIS SHEET ADJUST
SCALES ACCORDINGLY

1
REV
DATE - 02/08/11

DSN -
DRN - AM
CKD -
DATE - 02/08/11

1
REV
DATE - 02/08/11

RU SUPPLY DRAWING
DESCRIPTION
REVISION HISTORY

04/01/11
DATE
APPROV

ROMTEC
UTILITIES

18240 NORTH BANK ROAD
ROSEBURG, OREGON 97470
(541) 496-9678
FAX (541) 496-0804

M+H US, INC.
TATYANA SIVAK

MICROSOFT #4 - CO3.3

3" - 5' DIA WET WELL

SHEET

1 OF 1

JOB NUMBER

RMTC
0000