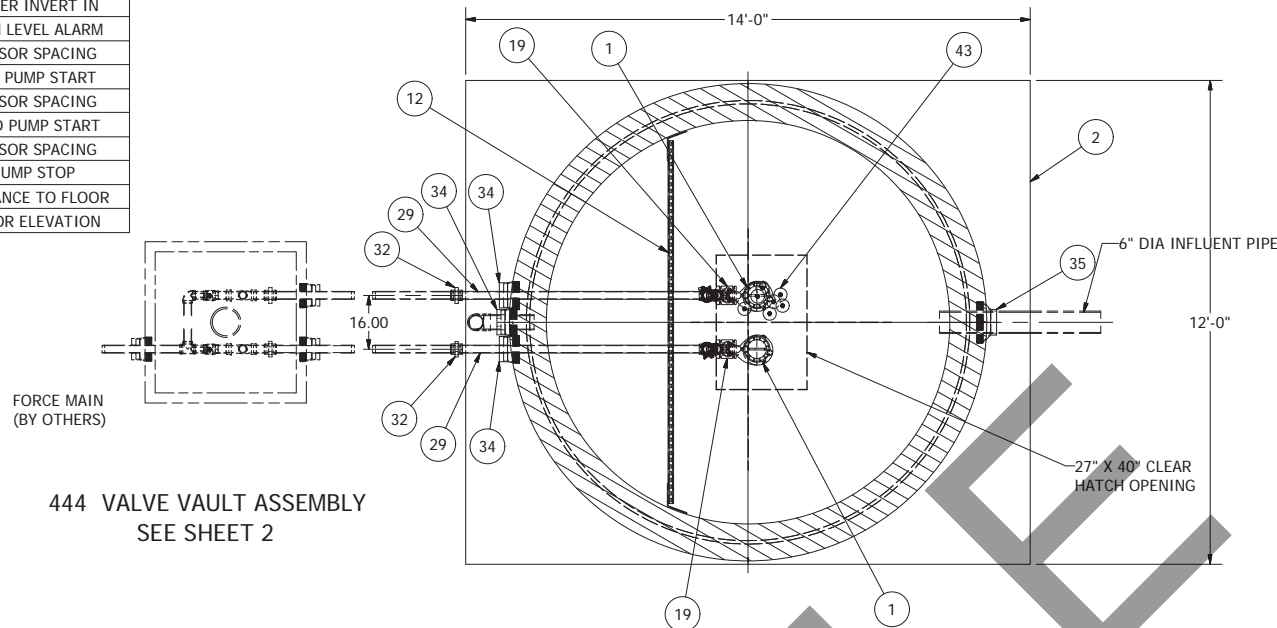
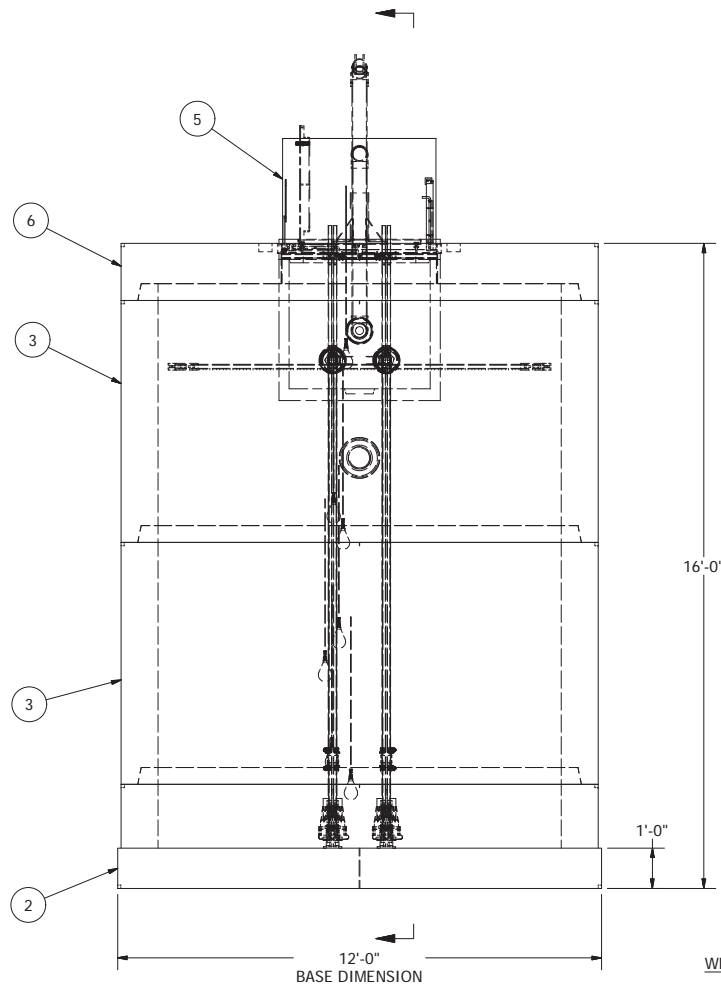


SENSOR AND ELEVATION TABLE		
LEVEL ELEVATION	DISTANCE BETWEEN POINTS	SET POINT DESCRIPTION
1033.00		SEWER INVERT IN
1028.70		HIGH LEVEL ALARM
1028.20	0.50	SENSOR SPACING
1027.70	0.50	LAG PUMP START
1027.70	1.00	LEAD PUMP START
1026.70		SENSOR SPACING
1026.70		PUMP STOP
1023.70	3.00	DISTANCE TO FLOOR
1023.70		FLOOR ELEVATION

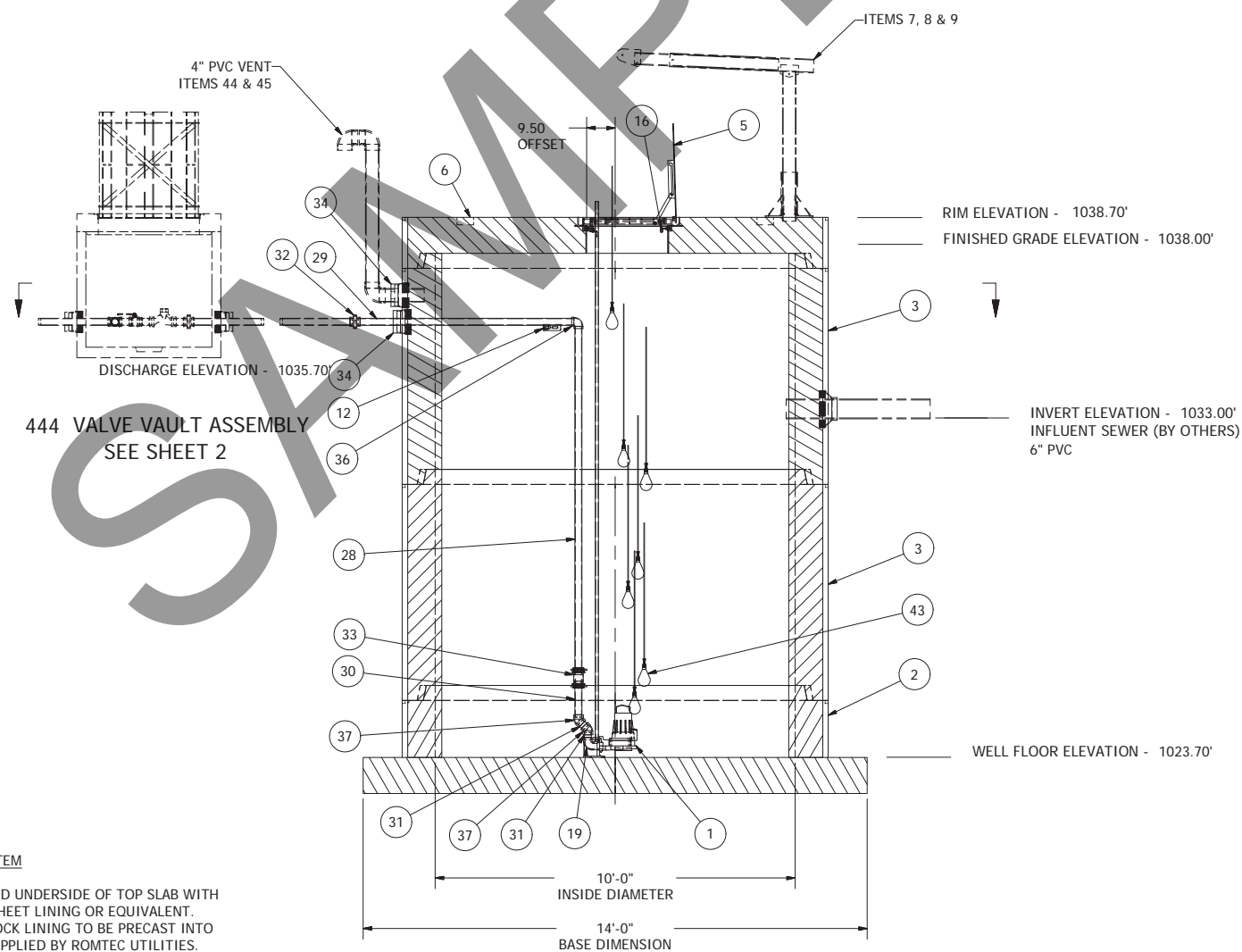


444 VALVE VAULT ASSEMBLY
SEE SHEET 2

NOTE: WET WELL TOP SLAB IS PEDESTRIAN RATED



WET WELL LINING SYSTEM



444 VALVE VAULT ASSEMBLY
SEE SHEET 2

© 2008 ROMTEC INC. ALL RIGHTS RESERVED. THESE PLANS AND DRAWINGS MAY NOT BE REPRODUCED, ADAPTED, OR FURTHER DISTRIBUTED, AND NO COMPONENTS MAY BE CONSTRUCTED FROM THESE PLANS, WITHOUT WRITTEN PERMISSION OF ROMTEC, INC.

PROVIDE WET WELL AND UNDERSIDE OF TOP SLAB WITH AMERON T-LOCK PVC SHEET LINING OR EQUIVALENT. **NOTE: AMERON T-LOCK LINING TO BE PRECAST INTO CONCRETE. THIS IS SUPPLIED BY ROMTEC UTILITIES. THE WELDING OF THE AMERON AT ALL PENETRATIONS AND SEAMS IS BY CONTRACTOR NOT ROMTEC UTILITIES.

10'DIAMETER WET WELL
2" DISCHARGE PIPING
FP3068 FLYGT PUMPS
2" 444 VALVE VAULT

ALL MATERIALS SHOWN ON THIS SHEET WILL BE SUPPLIED BY ROMTEC UTILITIES AND DELIVERED TO THE SITE AFTER THE HOLE HAS BEEN EXCAVATED AND SHORED. THE CONTRACTOR SHALL SUPPLY A CRANE OF SUFFICIENT SIZE TO LOWER ALL THE CONCRETE PIECES INTO THE HOLE SAFELY. THE CONTRACTOR SHALL INSTALL THE WET WELL (AND VALVE VAULT AND METERING VAULT IF APPLICABLE). ROMTEC UTILITIES WILL PROVIDE A REPRESENTATIVE FOR TECHNICAL ASSISTANCE ON THE DAY OF INSTALLATION TO ANSWER ANY QUESTIONS THAT MAY ARISE. THE CONTRACTOR IS RESPONSIBLE FOR ALL PLUMBING AND ELECTRICAL CONNECTIONS AND INSTALLATION. ITEMS NOTED AS "BY OTHERS" WILL BE PROVIDED AND INSTALLED BY THE CONTRACTOR. ROMTEC UTILITIES WILL NOT INSTALL ANY OF THE COMPONENTS SHOWN ON THIS PAGE.

REV	DESCRIPTION	DATE	BY	AM	AD
5	CHANGED INLET ORIENTATION PER COMMENTS	11/10/10	AM	AD	
4	UPDATE PER LAUNCH MEETING	09/29/10	AM	AD	
3	GENERAL UPDATE	7/29/10	AM	AD	
2	CHANGES PER COMMENTS	11/20/08	AM	AM	
1	COMPONENT DRAWING	11/18/08	AM	AM	

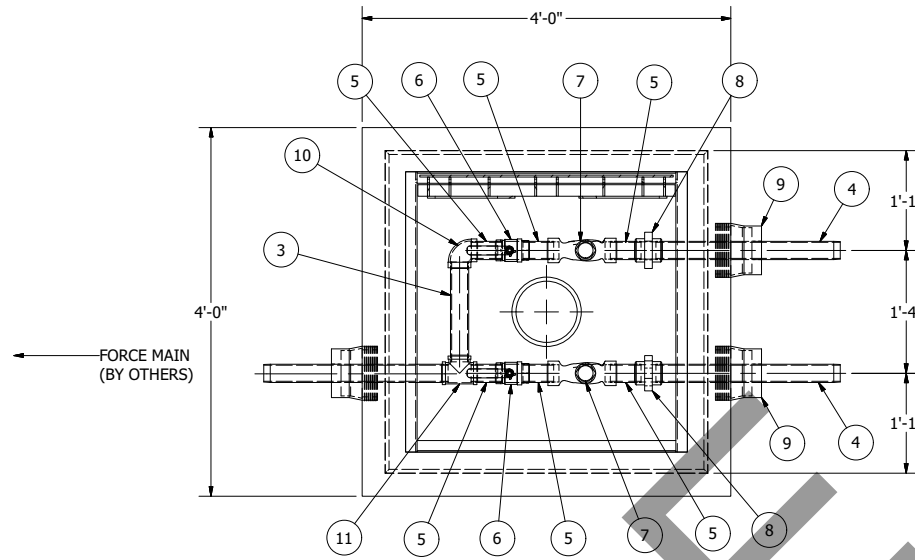
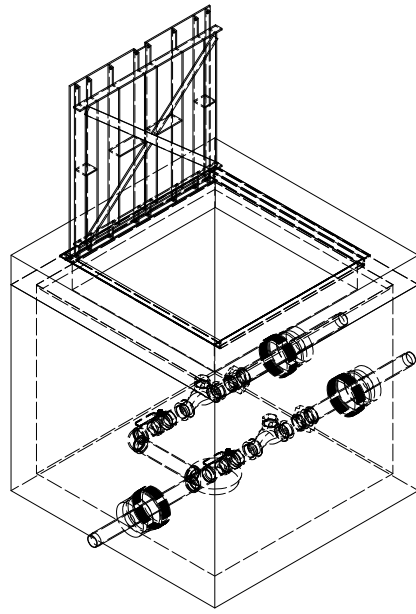
VERIFY SCALE
BAR IS ONE INCH ON ORIGINAL DRAWING
1" = 1'-0"
IF NOT ONE INCH ON THIS SHEET, ADJUST SCALE ACCORDINGLY
DSN - AM
CKD - AM
DATE - 11/18/08

COMPONENT DRAWING

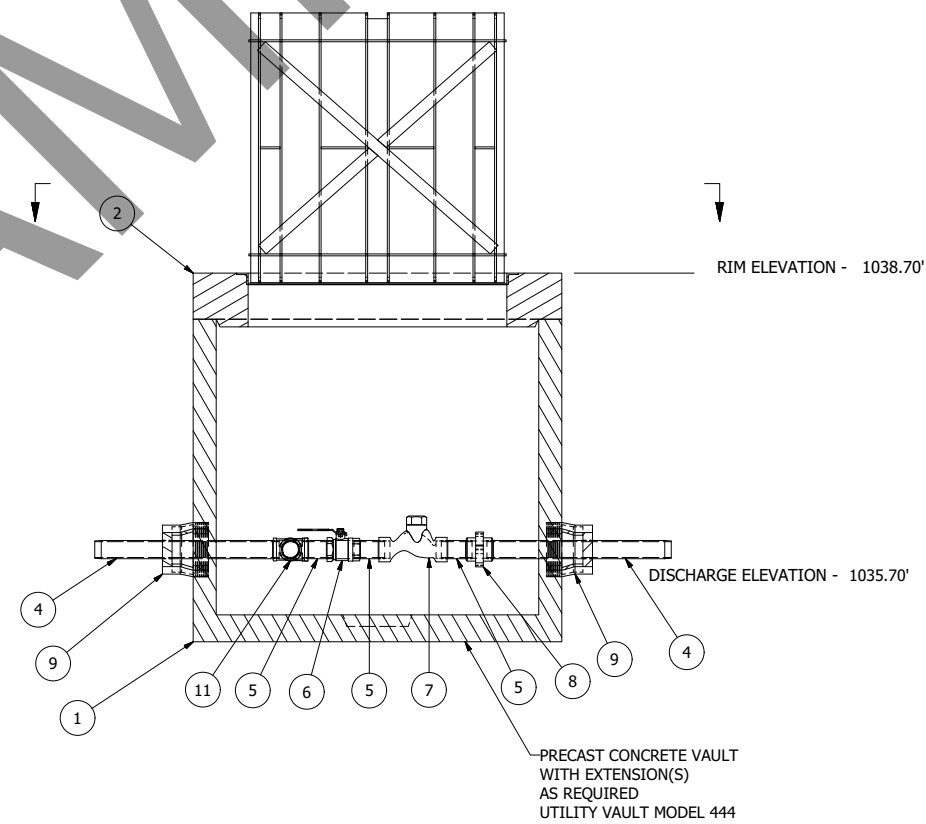
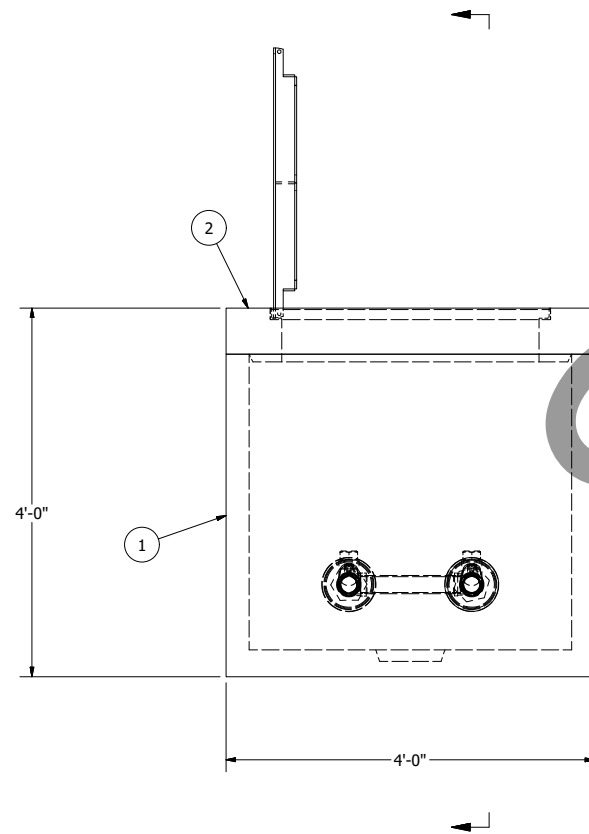
ROMTEC UTILITIES
18240 NORTH BANK ROAD
ROSEBURG, OREGON 97470
(541) 496-9678
FAX (541) 496-0804

KSN, INC
JASON TOKHEIM
MOUNTAIN OAK SCHOOL
2" - 10' WET WELL

SHEET
1 OF 2
JOB NUMBER
RMTC
0000



NOTE: WET WELL TOP SLAB IS H-20 OCCASIONAL TRAFFIC RATED



**444 VALVE VAULT
2" PIPING AND VALVES**

© 2008 ROMTEC INC. ALL RIGHTS RESERVED. THESE PLANS AND DRAWINGS MAY NOT BE REPRODUCED, ADAPTED, OR FURTHER DISTRIBUTED, AND NO COMPONENTS MAY BE CONSTRUCTED FROM THESE PLANS, WITHOUT WRITTEN PERMISSION OF ROMTEC, INC.

REVISIONS	
REV	DESCRIPTION
2	GENERAL UPDATE
1	COMPONENT DRAWING

COMPONENT DRAWING
28-2202

ROMTEC UTILITIES
18240 NORTH BANK ROAD
ROSEBURG, OREGON 97470
(541) 496-9678
FAX (541) 496-0804

KSR&N, INC.
JASON TOLKHEIM
MOUNTAIN OAK SCHOOL
2" 444 VALVE VAULT

SHEET
2 OF 2
JOB NUMBER
RMTC 0000