

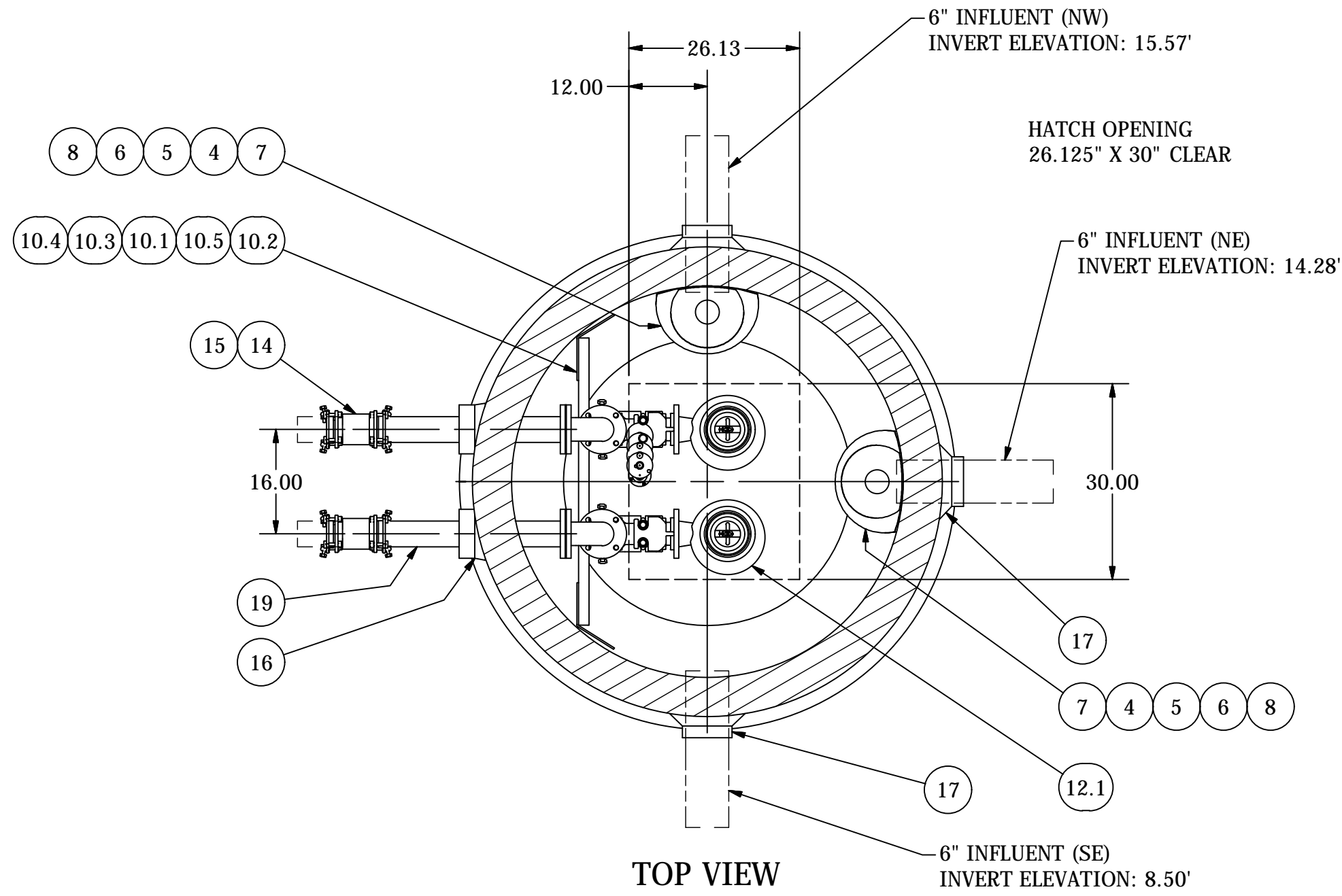
5' DIAMETER WET WELL
3" DISCHARGE PIPING
EBARA VORTEX PUMPS
3" VALVE VAULT

506 VALVE VAULT ASSEMBLY
SEE SHEET 2

NOTE:
CONDUIT TO CONTROL PANEL (BY OTHERS)
MINIMUM:
(2) FOR POWER
(1) FOR LEVEL SENSING

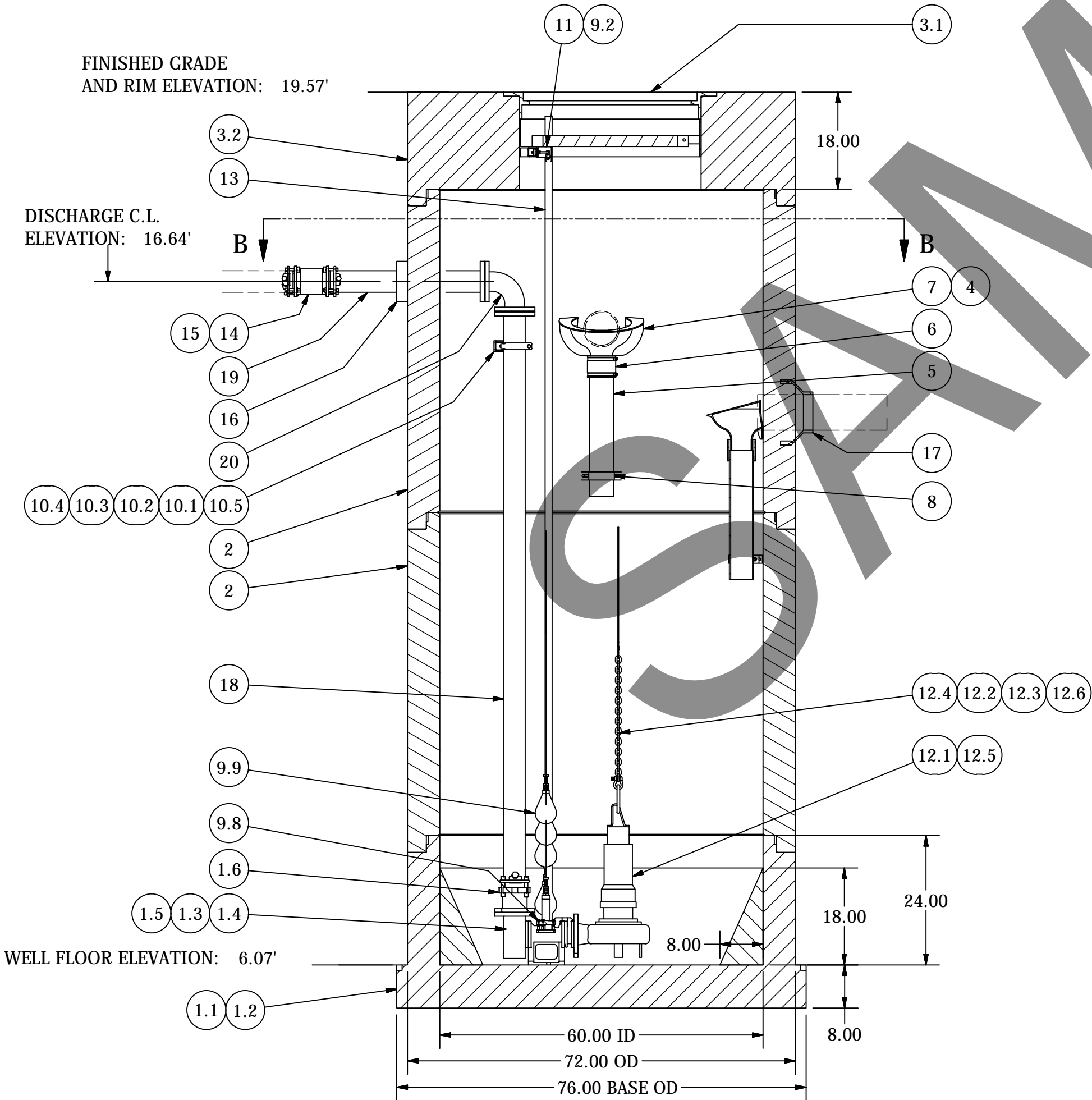
ALL MATERIALS SHOWN ON THIS SHEET WILL BE SUPPLIED BY ROMTEC UTILITIES AND DELIVERED TO THE SITE AFTER THE HOLE HAS BEEN EXCAVATED AND SHORED. THE CONTRACTOR SHALL SUPPLY A CRANE OF SUFFICIENT SIZE TO LOWER ALL THE CONCRETE PIECES INTO THE HOLE SAFELY. THE THE CONTRACTOR SHALL INSTALL THE WET WELL (AND VALVE VAULT AND METERING VAULT IF APPLICABLE). ROMTEC UTILITIES WILL PROVIDE A REPRESENTATIVE FOR TECHNICAL ASSISTANCE ON THE DAY OF INSTALLATION TO ANSWER ANY QUESTIONS THAT MAY ARISE. THE CONTRACTOR IS RESPONSIBLE FOR ALL PLUMBING AND ELECTRICAL CONNECTIONS AND INSTALLATION. ITEMS NOTED AS "BY OTHERS" WILL BE PROVIDED AND INSTALLED BY THE CONTRACTOR. ROMTEC UTILITIES WILL NOT INSTALL ANY OF THE COMPONENTS SHOWN ON THIS PAGE.

© 2015 ROMTEC INC. ALL RIGHTS RESERVED. THESE PLANS AND DRAWINGS MAY NOT BE REPRODUCED, ADAPTED, OR FURTHER DISTRIBUTED, AND NO COMPONENTS MAY BE CONSTRUCTED FROM THESE PLANS, WITHOUT WRITTEN PERMISSION OF ROMTEC, INC.



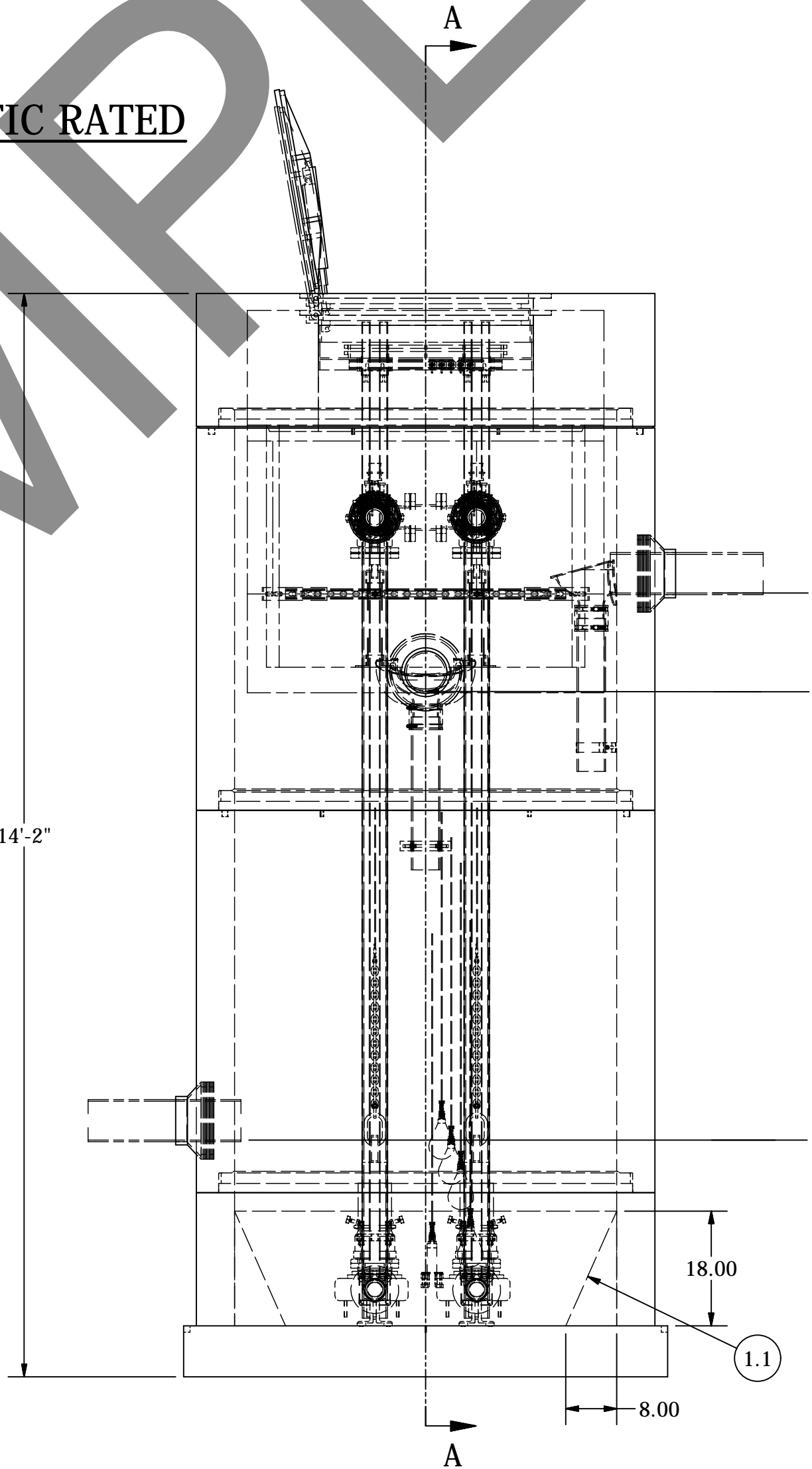
TOP VIEW
SECTION B-B
SCALE 1 / 20

NOTE: WET WELL TOP SLAB IS AIRPORT HEAVY DUTY TRAFFIC RATED



PROFILE VIEW
SECTION A-A
SCALE 1 / 20

SENSOR AND ELEVATION TABLE		
LEVEL ELEVATION	DISTANCE BETWEEN POINTS	SET POINT DESCRIPTION
8.50'		INVERT IN
---		BACK UP PUMPS START
---		SENSOR SPACING
---		BACK UP PUMPS STOP
---		SENSOR SPACING
---		BACK UP HL ALARM
8.48'		HIGH LEVEL ALARM
8.15'	0.33'	SENSOR SPACING
		LAG PUMP START
7.82'	0.33'	SENSOR SPACING
		LEAD PUMP START
7.07'	0.75'	SENSOR SPACING
		PUMP STOP
	1.00'	DISTANCE TO FLOOR
6.07'		FLOOR ELEVATION



SIDE VIEW
SCALE 1 / 20

INVERT ELEVATION: 15.57'
INFLUENT SEWER (BY OTHERS)
6" PVC (NW)

INVERT ELEVATION: 14.28'
INFLUENT SEWER (BY OTHERS)
6" PVC (NE)

INVERT ELEVATION: 8.50'
INFLUENT SEWER (BY OTHERS)
6" PVC (SW)

NOTE: ALL DIMENSIONS AND ELEVATIONS SHOWN ARE NOMINAL DIMENSIONS. IT IS THE RESPONSIBILITY OF THE ON-SITE CONTRACTOR OR ROMTEC UTILITIES CUSTOMER (NOT ROMTEC UTILITIES) TO VERIFY THE ACCURACY OF ANY CRITICAL DIMENSIONS OR ELEVATIONS PRIOR TO SETTING OR INSTALLING ANY EQUIPMENT.

VERIFY SCALE
BAR IS ONE INCH ON
ORIGINAL DRAWING
0 1"
IF NOT ONE INCH ON
THIS SHEET, ADJUST
SCALES ACCORDINGLY

COMPONENT
DRAWING

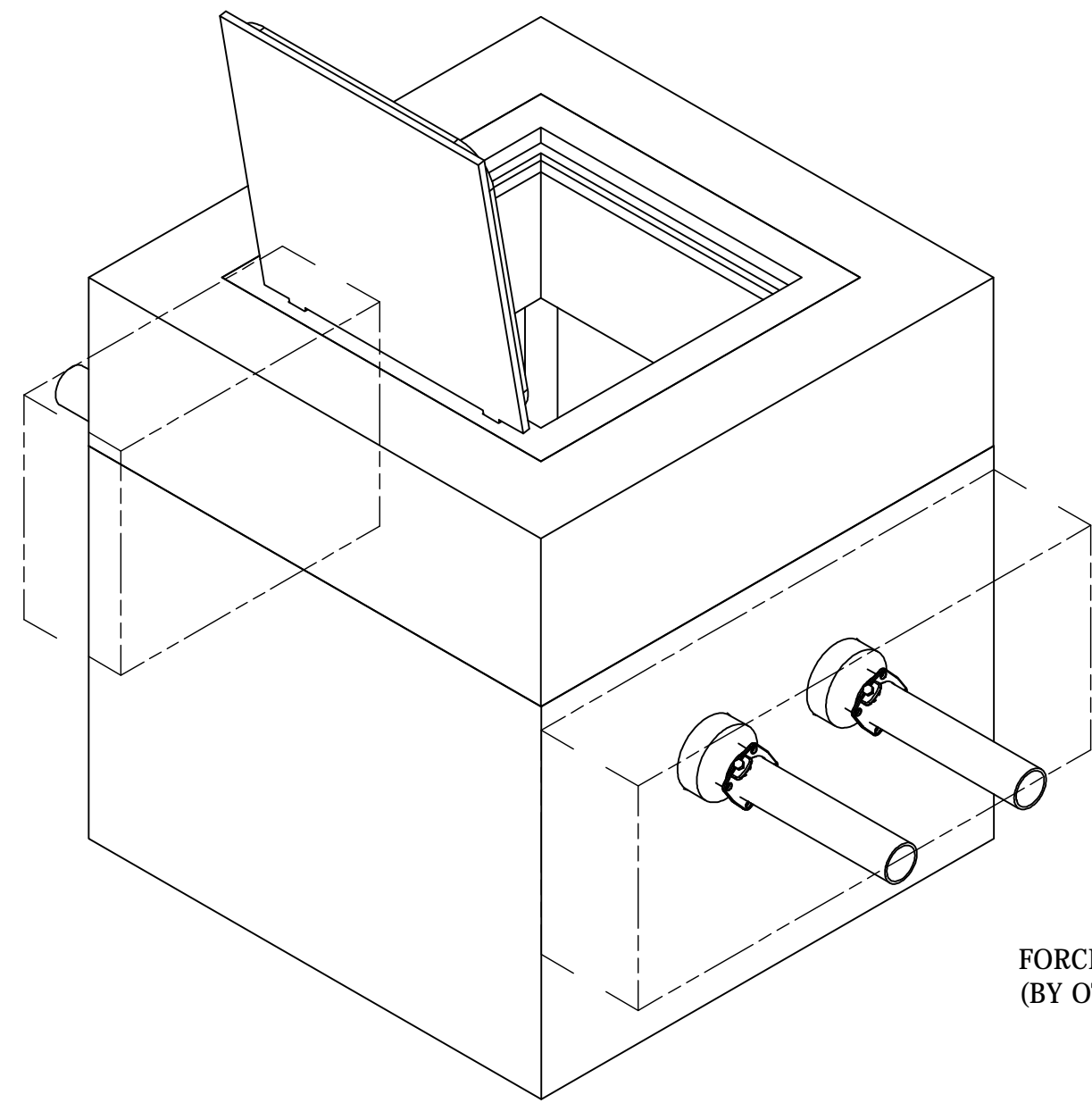
ROMTEC
UTILITIES
18240 NORTH BANK ROAD
ROSEBURG, OREGON 97470
(541) 496-9678
FAX (541) 496-0804

PORTLAND AIRPORT
WET WELL ASSEMBLY

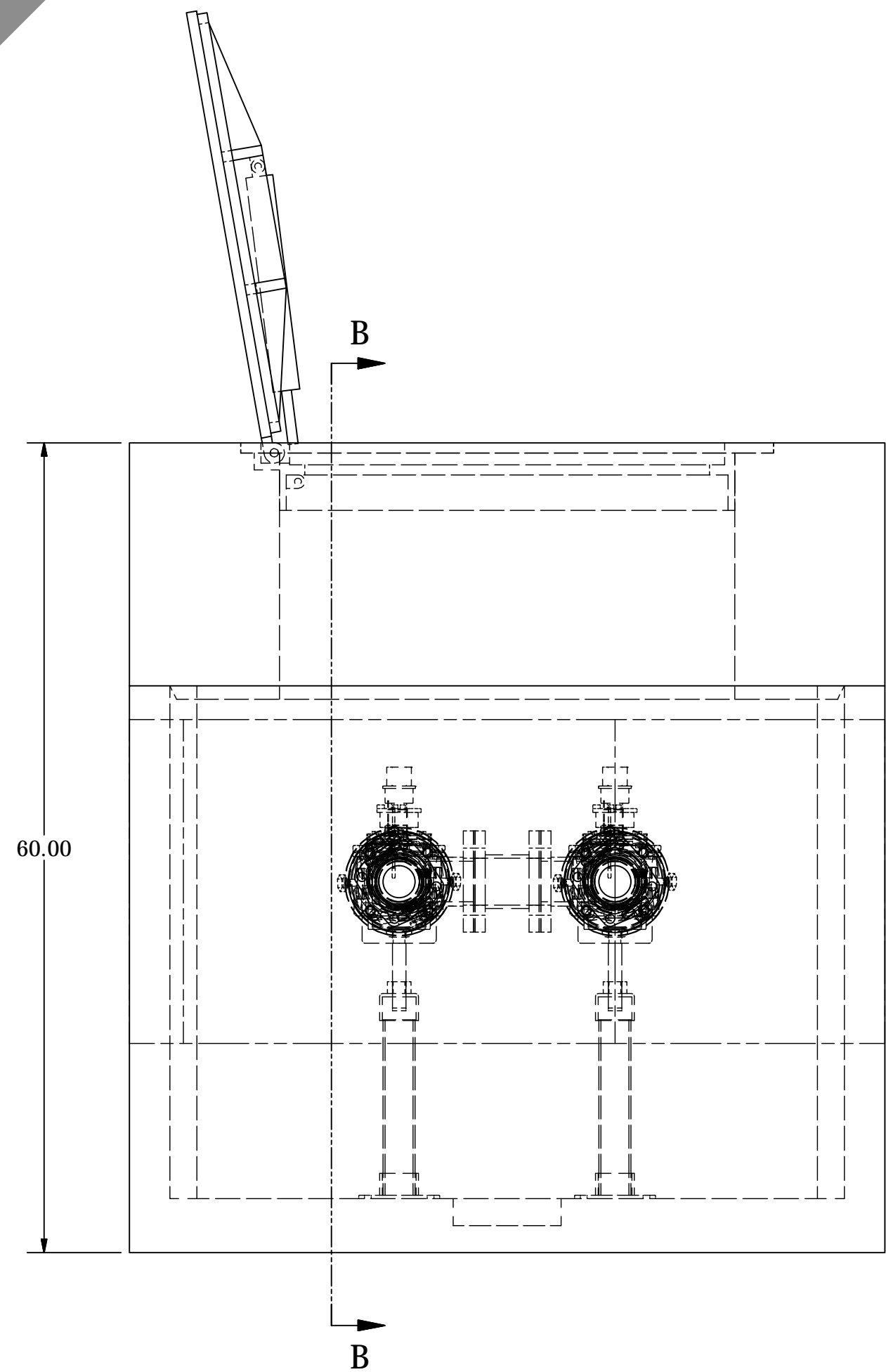
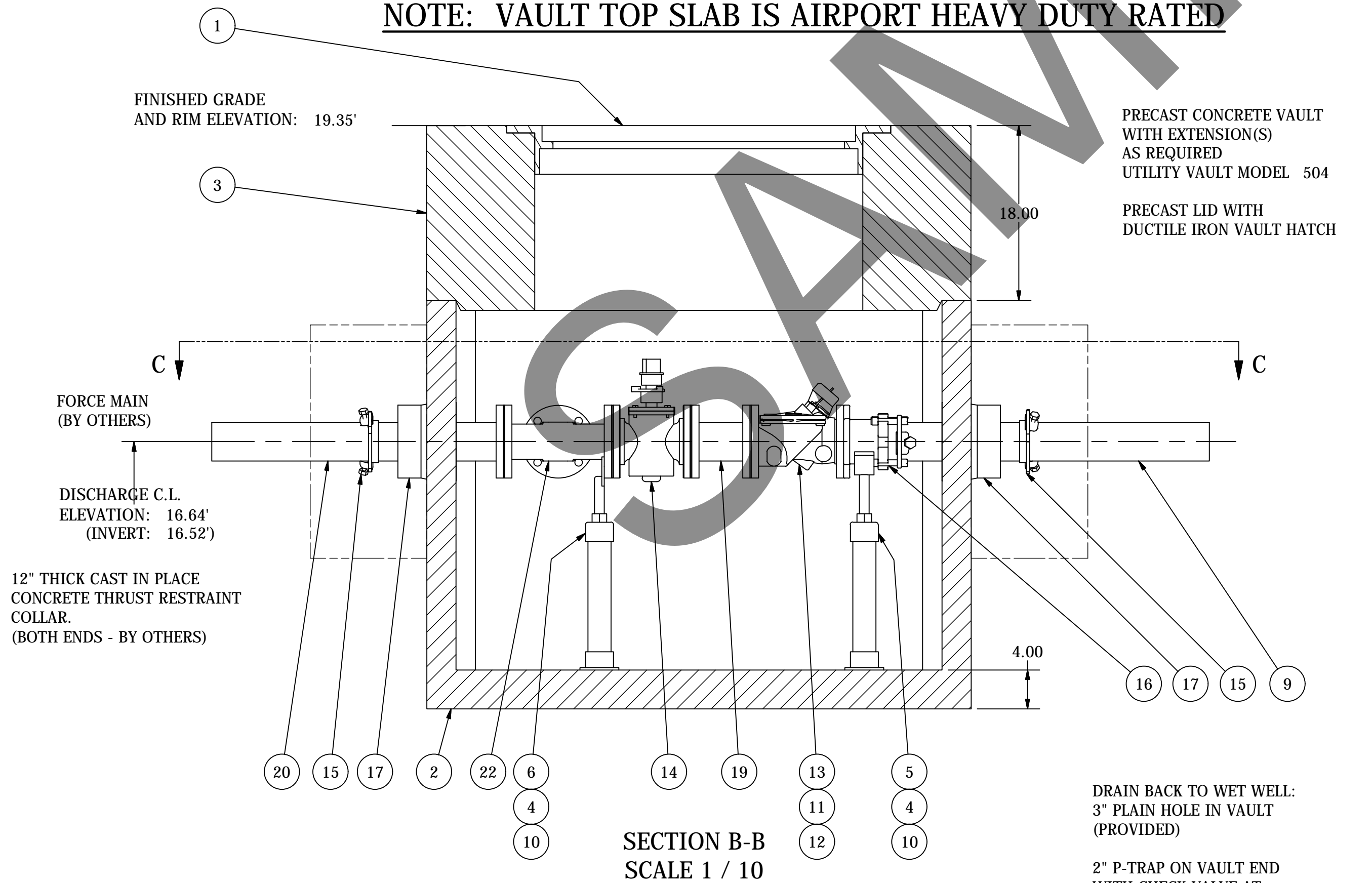
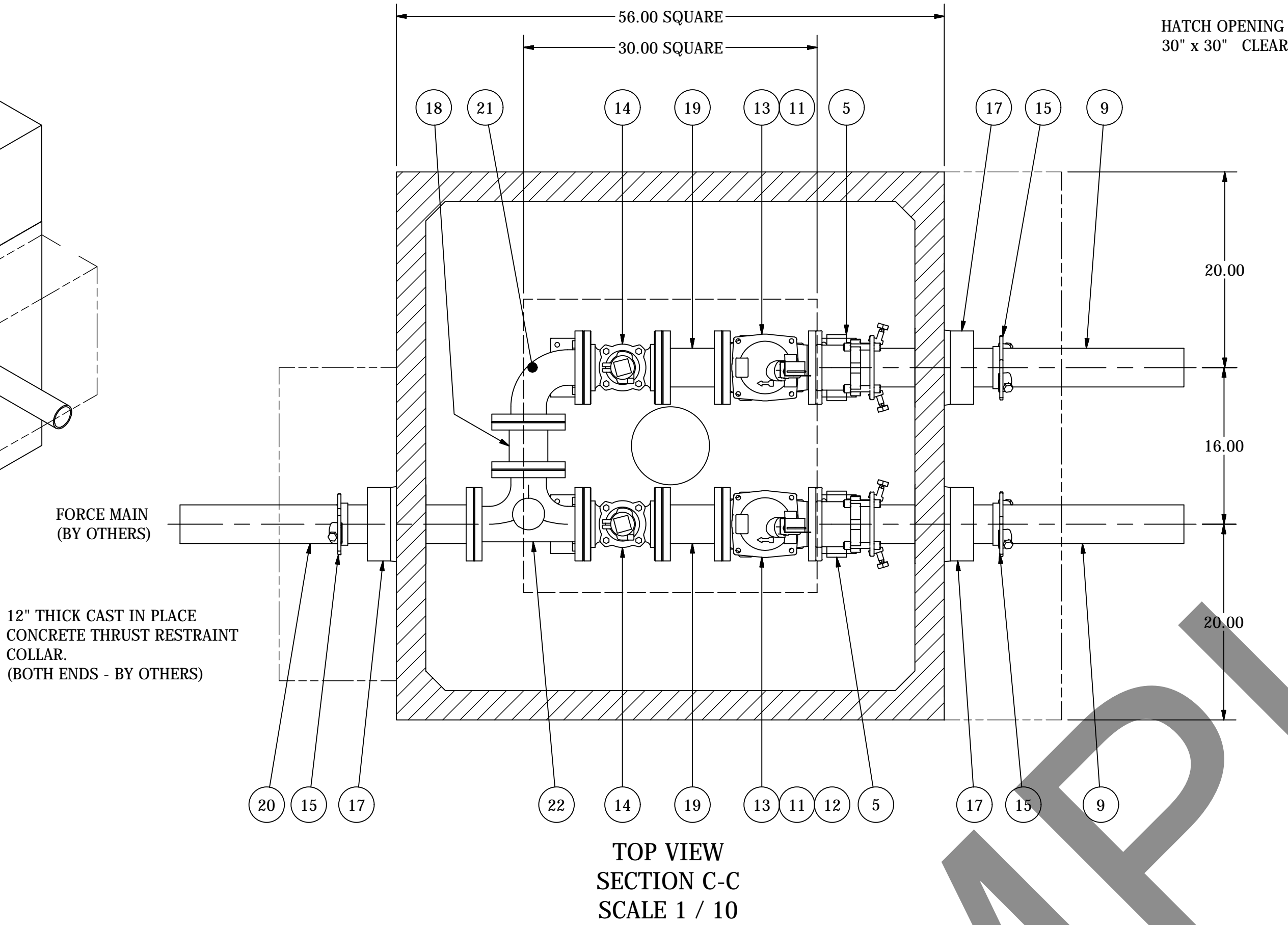
SHEET
1 OF 2

JOB NUMBER
RMTC
0000

ELEVATIONS / INFLUENT SIZE / AS BUILT		2-23-16	KB
PRODUCTION LAUNCH REVISIONS		12-17-15	AD
INITIAL DESIGN		9-3-15	KB
DESCRIPTION		REV	DATE
REVISION HISTORY		DATE	APPROV



504 VALVE VAULT
3" PIPING AND VALVES
AIRPORT RATED TOP SLAB



ALL MATERIALS SHOWN ON THIS SHEET WILL BE SUPPLIED BY ROMTEC UTILITIES AND DELIVERED TO THE SITE AFTER THE HOLE HAS BEEN EXCAVATED AND SHORED. THE CONTRACTOR SHALL SUPPLY A CRANE OF SUFFICIENT SIZE TO LOWER ALL THE CONCRETE PIECES INTO THE HOLE SAFELY. THE CONTRACTOR SHALL INSTALL THE WET WELL (AND VALVE VAULT AND METERING VAULT IF APPLICABLE). ROMTEC UTILITIES WILL PROVIDE A REPRESENTATIVE FOR TECHNICAL ASSISTANCE ON THE DAY OF INSTALLATION TO ANSWER ANY QUESTIONS THAT MAY ARISE. THE CONTRACTOR IS RESPONSIBLE FOR ALL PLUMBING AND ELECTRICAL CONNECTIONS AND INSTALLATION. ITEMS NOTED AS "BY OTHERS" WILL BE PROVIDED AND INSTALLED BY THE CONTRACTOR. ROMTEC UTILITIES WILL NOT INSTALL ANY OF THE COMPONENTS SHOWN ON THIS PAGE.

© 2015 ROMTEC INC. ALL RIGHTS RESERVED. THESE PLANS AND DRAWINGS MAY NOT BE REPRODUCED, ADAPTED, OR FURTHER DISTRIBUTED, AND NO COMPONENTS MAY BE CONSTRUCTED FROM THESE PLANS, WITHOUT WRITTEN PERMISSION OF ROMTEC, INC.

NOTE: ALL DIMENSIONS AND ELEVATIONS SHOWN ARE NOMINAL DIMENSIONS. IT IS THE RESPONSIBILITY OF THE ON-SITE CONTRACTOR OR ROMTEC UTILITIES CUSTOMER (NOT ROMTEC UTILITIES) TO VERIFY THE ACCURACY OF ANY CRITICAL DIMENSIONS OR ELEVATIONS PRIOR TO SETTING OR INSTALLING ANY EQUIPMENT.

VERIFY SCALE
BAR IS ONE INCH ON
ORIGINAL DRAWING
0 1"
IF NOT ONE INCH ON
THIS SHEET, ADJUST
SCALES ACCORDINGLY

DSN - KEVIN BOGAN
DRN - KEVIN BOGAN
CKD - KEVIN BOGAN
DATE - 9-4-15
REV 0
REVISION HISTORY

2-23-16 KB
9-4-15 KB
DATE APPROV

ROMTEC
UTILITIES

18240 NORTH BANK ROAD
ROSEBURG, OREGON 97470
(541) 496-9678
FAX (541) 496-0804

KPFF

PORTLAND AIRPORT
VALVE VAULT ASSEMBLY

SHEET
2 OF 2

JOB NUMBER
RMTC
0000