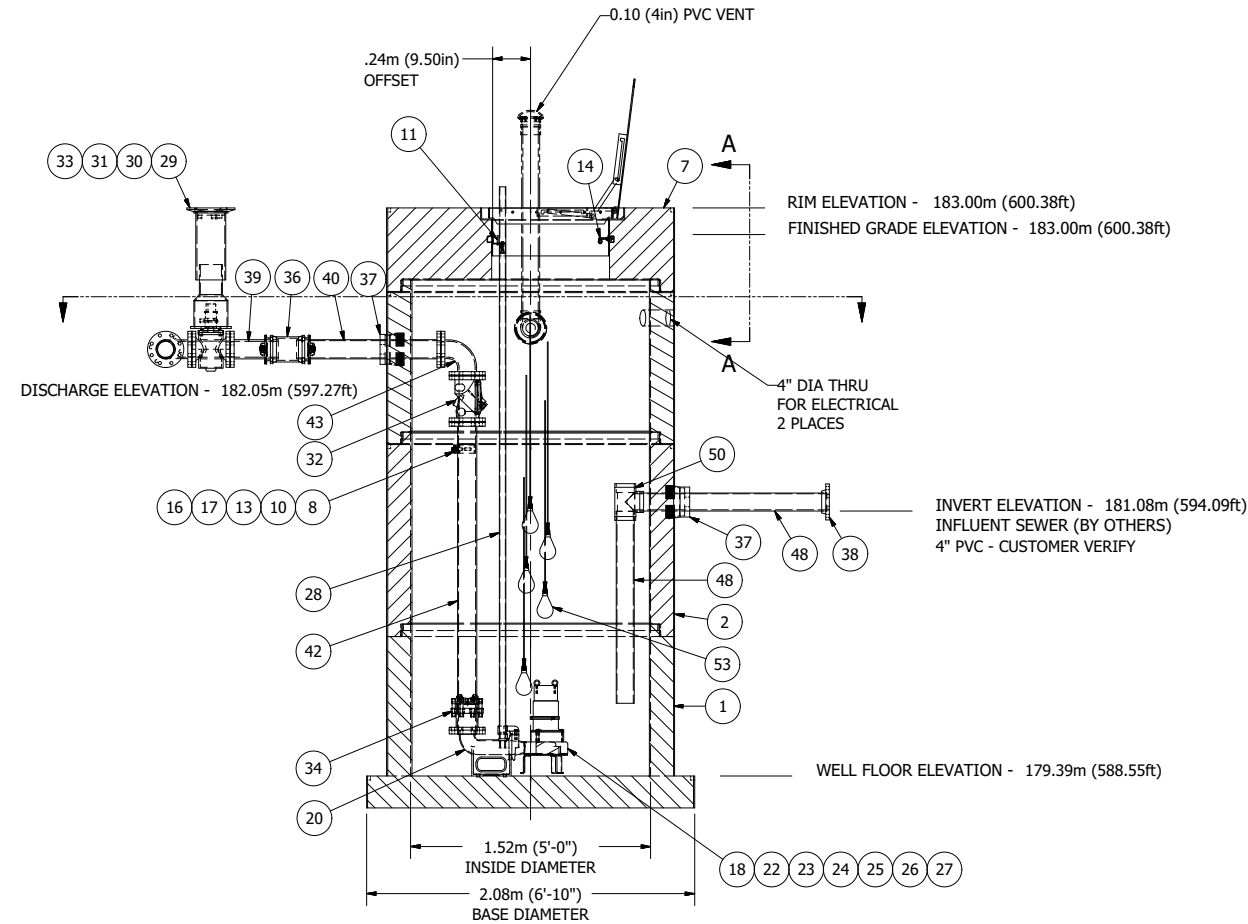
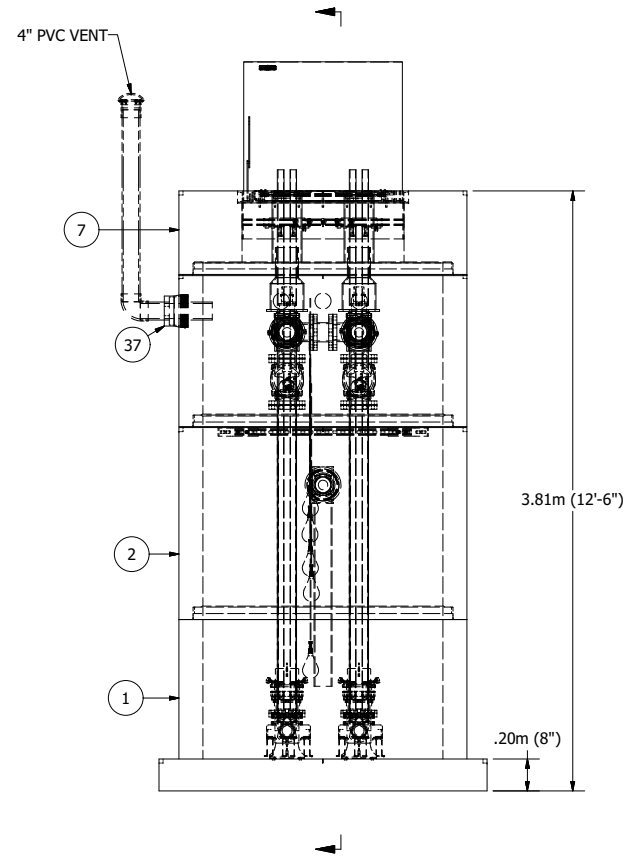


SENSOR AND ELEVATION TABLE		
LEVEL ELEVATION	DISTANCE BETWEEN POINTS	SET POINT DESCRIPTION
181.08m (594.09ft)		SEWER INVERT IN
180.60m (592.52ft)		HIGH LEVEL ALARM
	.15m (0.50ft)	SENSOR SPACING
180.45m (592.03ft)		LAG PUMP START
	.15m (0.50ft)	SENSOR SPACING
180.30m (591.54ft)		LEAD PUMP START
	.3m (1.00ft)	SENSOR SPACING
180.00m (590.55ft)		PUMP STOP
	.61m (2.00ft)	DISTANCE TO FLOOR
179.39m (588.55ft)		FLOOR ELEVATION

**NOTE: WET WELL TOP SLAB IS AIRCRAFT RATED**



NOTE: ALL DIMENSIONS AND ELEVATIONS SHOWN ARE NOMINAL DIMENSIONS. IT IS THE RESPONSIBILITY OF THE ON-SITE CONTRACTOR OR ROMTEC UTILITIES CUSTOMER (NOT ROMTEC UTILITIES) TO VERIFY THE ACCURACY OF ANY CRITICAL DIMENSIONS OR ELEVATIONS PRIOR TO SETTING OR INSTALLING ANY EQUIPMENT.

**5' DIAMETER WET WELL  
4" DISCHARGE PIPING  
TSURUMI PUMPS**

ALL MATERIALS SHOWN ON THIS SHEET WILL BE SUPPLIED BY ROMTEC UTILITIES AND DELIVERED TO THE SITE AFTER THE HOLE HAS BEEN EXCAVATED AND SHORED. THE CONTRACTOR SHALL SUPPLY A CRANE OF SUFFICIENT SIZE TO LOWER ALL THE CONCRETE PIECES INTO THE HOLE SAFELY. THE CONTRACTOR SHALL INSTALL THE WET WELL (AND VALVE VAULT AND METERING VAULT IF APPLICABLE). ROMTEC UTILITIES WILL PROVIDE A REPRESENTATIVE FOR TECHNICAL ASSISTANCE ON THE DAY OF INSTALLATION TO ANSWER ANY QUESTIONS THAT MAY ARISE. THE CONTRACTOR IS RESPONSIBLE FOR ALL PLUMBING AND ELECTRICAL CONNECTIONS AND INSTALLATION. ITEMS NOTED AS "BY OTHERS" WILL BE PROVIDED AND INSTALLED BY THE CONTRACTOR. ROMTEC UTILITIES WILL NOT INSTALL ANY OF THE COMPONENTS SHOWN ON THIS PAGE.

REV	DESCRIPTION	DATE	APPROV
1	COMPONENT DRAWING	08/26/10	AM
2	UPDATE PER 10-06-10 COMMENTS	10/08/10	AM
3	UPDATE PER 10/21/10 COMMENTS - CONVERT TO METERS	10/25/10	AM
4	CHANGED RIM TO AIRCRAFT RATED HATCH	11-19-10	AD
5	ADDED CORED HOLES FOR ELECTRICAL	12-3-10	AD
6		12/07/10	AM

**COMPONENT  
DRAWING**

**ROMTEC UTILITIES**  
18240 NORTH BANK ROAD  
ROSEBURG, OREGON 97470  
(541) 496-9678  
FAX (541) 496-0804

POWER RAMP  
KRISTI MCGINLEY  
**SAN JACINTO - TIZATE  
4" - 5' DIA WET WELL**