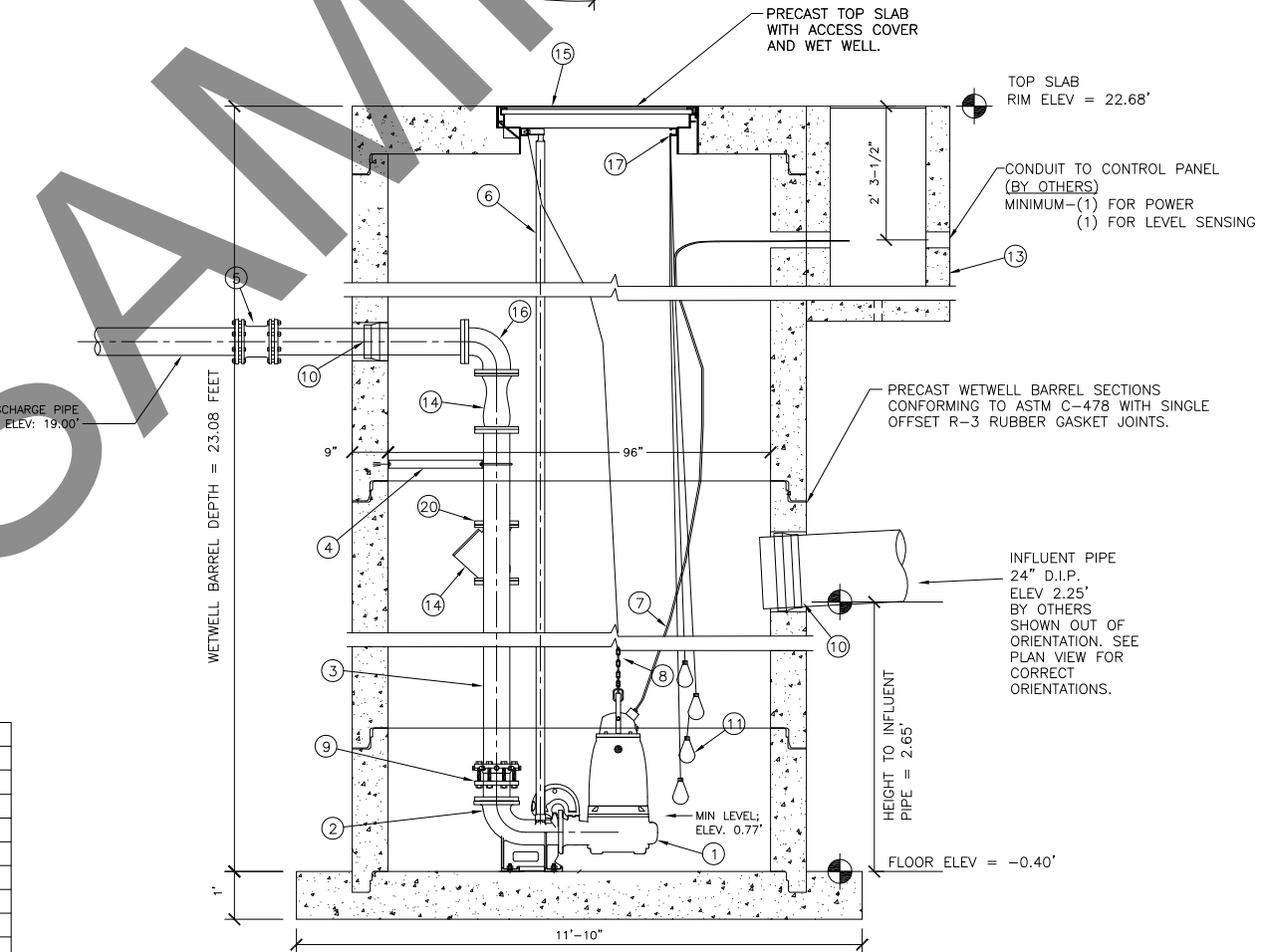


NOTE:
 ALL MATERIALS SHOWN ON THIS SHEET WILL BE SUPPLIED BY ROMTEC UTILITIES AND DELIVERED TO THE SITE AFTER THE HOLE HAS BEEN EXCAVATED AND SHORED. THE CONTRACTOR WILL SUPPLY A CRANE OF SUFFICIENT SIZE TO LOWER ALL THE CONCRETE PIECES INTO THE HOLE SAFELY. THE CONTRACTOR WILL INSTALL THE WET WELL. ROMTEC UTILITIES WILL PROVIDE A REPRESENTATIVE FOR INSTALLATION TO ANSWER ANY QUESTIONS THAT MAY ARISE. THE CONTRACTOR IS RESPONSIBLE FOR ALL PLUMBING AND ELECTRICAL CONNECTIONS AND INSTALLATION. ITEMS NOTED AS "(BY OTHERS)" WILL BE PROVIDED AND INSTALLED BY THE CONTRACTOR. ROMTEC UTILITIES WILL NOT INSTALL ANY OF THE COMPONENTS SHOWN ON THIS PAGE.



PROFILE
 8' DIAMETER WETWELL
 SCALE: 1/2" = 1'-0"

LEVEL ELEVATION	DISTANCE-BETWEEN-POINTS	SET POINT DESCRIPTION
11.85		12 INCH SEWER INVERT IN
2.25		24 INCH SEWER INVERT IN
16.60		HIGH LEVEL ALARM
	0.50	SENSOR SPACING
16.10		LAG PUMP START
	0.50	SENSOR SPACING
15.60		LEAD PUMP START
	13.50	SENSOR SPACING
2.10		PUMP STOP
	2.50	DISTANCE TO FLOOR
-0.40		FLOOR ELEVATION

VERIFY SCALE
 0 1" = 1'-0"
 IF NOT ONE INCH ON THIS SHEET, ADJUST SCALE ACCORDINGLY

NO.	DATE	DESCRIPTION
3	1-14-08	UPDATED LEVEL CONTROL
2	1-10-08	REVISED PER 1-9-08 COMMENTS
1	12-18-07	COMPONENT DRAWING

DATE: DEC. 2007

HNTB CORP.
 STORM WATER L.S.
 8' DIA. WETWELL
 6" DISCHARGE
 DUPLEX FLYGT NP 3171 PUMPS

ROMTEC UTILITIES
 18240 NORTH BANK ROAD
 ROSEBURG, OR 97470
 (541)-496-9678
 FAX (541)-496-0804

SHEET
 1 OF 1
 JOB NUMBER
 RMT0000