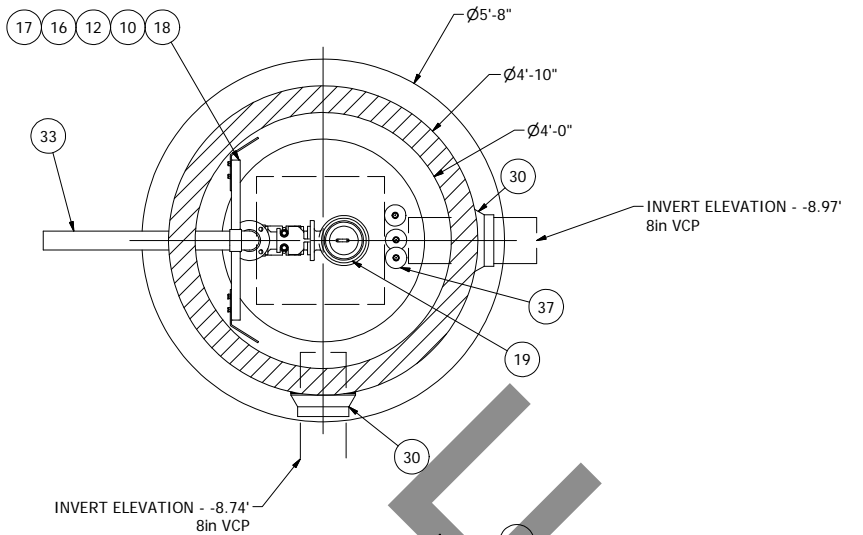


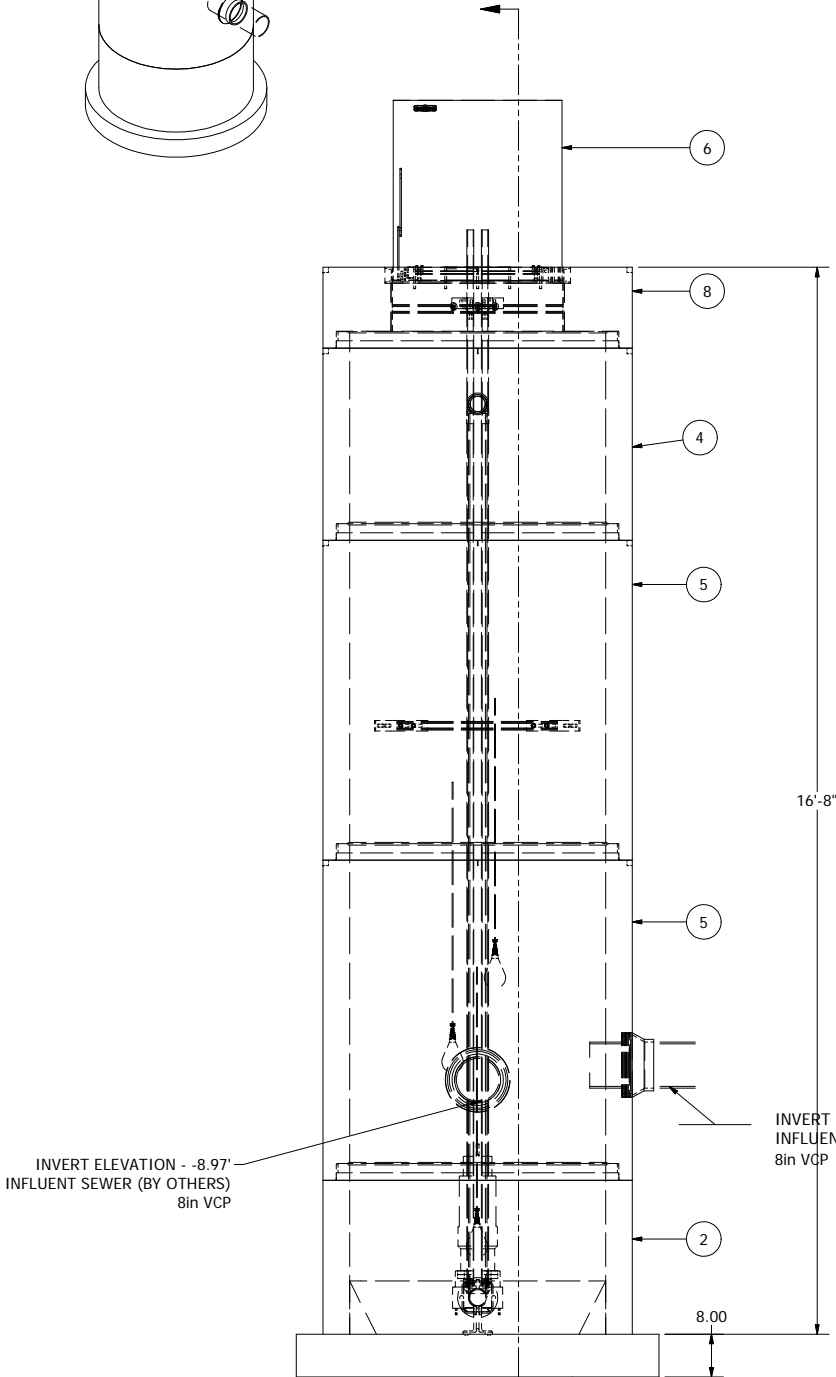
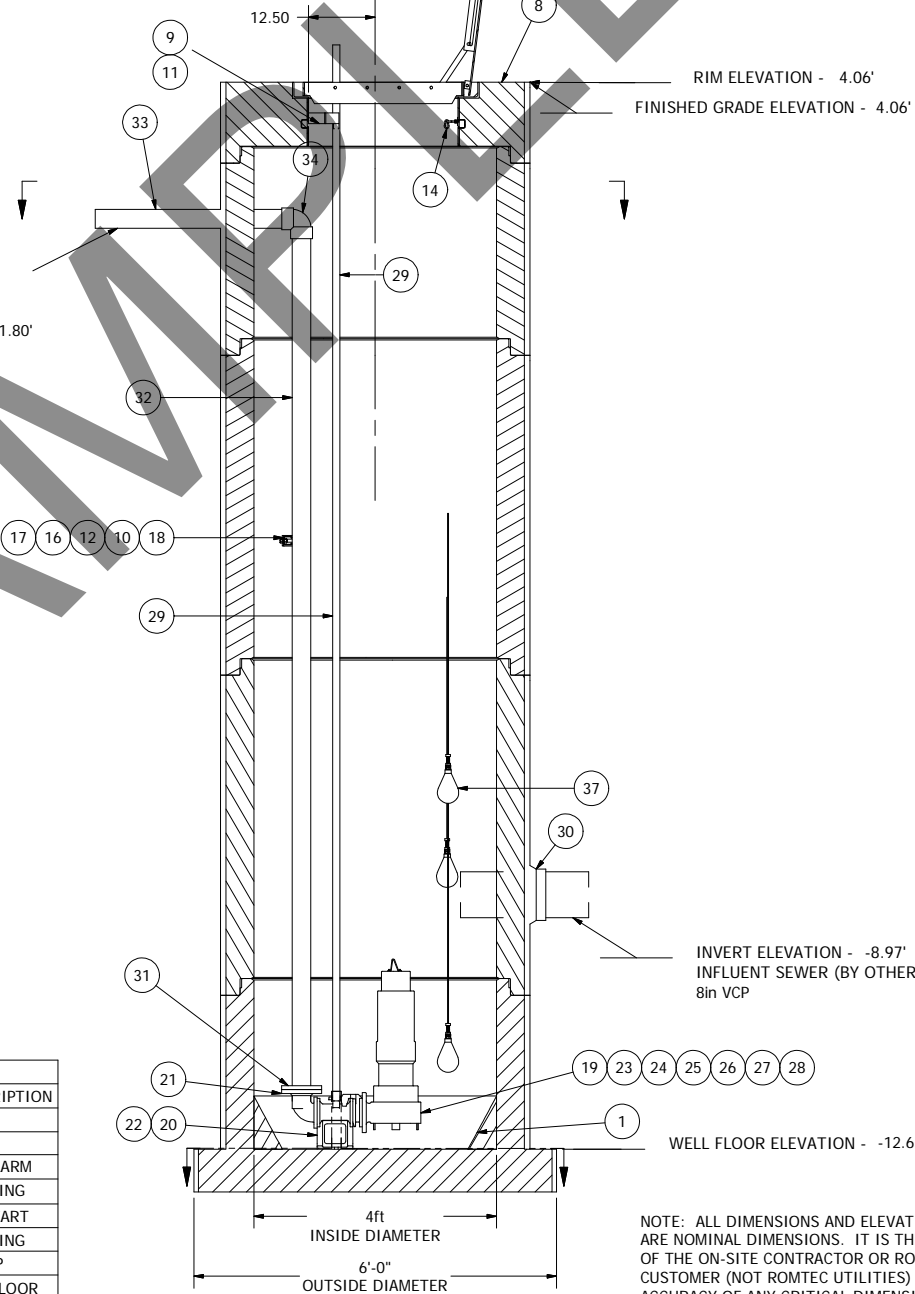
ANCHOR BOLT DETAIL



WET WELL TOP SLAB IS H20 FULL TRAFFIC RATED

CONTRACTOR TO GROUT AROUND
3" PVC DISCHARGE PIPE AND
8" VCP OUTFLOW PIPE IN FIELD

DISCHARGE ELEVATION - 1.80'



SENSOR AND ELEVATION TABLE		
LEVEL ELEVATION	DISTANCE BETWEEN POINTS	SET POINT DESCRIPTION
-8.97		INVERT IN
-8.74		INVERT IN
-7.02		HIGH LEVEL ALARM
	1.00	SENSOR SPACING
-8.02		LEAD PUMP START
	3.59	SENSOR SPACING
-11.61		PUMP STOP
	1.00	DISTANCE TO FLOOR
-12.61		FLOOR ELEVATION

© 2013 ROMTEC INC. ALL RIGHTS RESERVED. THESE
PLANS AND DRAWINGS MAY NOT BE REPRODUCED,
ADAPTED, OR FURTHER DISTRIBUTED, AND NO
COMPONENTS MAY BE CONSTRUCTED FROM THESE
PLANS, WITHOUT WRITTEN PERMISSION OF ROMTEC, INC.

FIELD PREPARE THE EXTERIOR CONCRETE AS
PER TNEPEC APPLICATION REQUIREMENTS.
FIELD APPLY TO EXTERIOR TNEPE-LINER
SERIES 61

4' DIAMETER WET WELL
3" DISCHARGE PIPING
80DVFMU EBARA PUMP

ALL MATERIALS SHOWN ON THIS SHEET WILL BE
SUPPLIED BY ROMTEC UTILITIES AND DELIVERED TO
THE SITE AFTER THE HOLE HAS BEEN EXCAVATED
AND SHORED. THE CONTRACTOR SHALL SUPPLY A
CRANE OF SUFFICIENT SIZE TO LOWER ALL THE
CONCRETE PIECES INTO THE HOLE SAFELY. THE
THE CONTRACTOR SHALL INSTALL THE WET WELL
(AND VALVE VAULT AND METERING VAULT IF
APPLICABLE). ROMTEC UTILITIES WILL PROVIDE A
REPRESENTATIVE FOR TECHNICAL ASSISTANCE ON
THE DAY OF INSTALLATION TO ANSWER ANY QUESTIONS
THAT MAY ARISE. THE CONTRACTOR IS RESPONSIBLE
FOR ALL PLUMBING AND ELECTRICAL CONNECTIONS
AND INSTALLATION. ITEMS NOTED AS "BY OTHERS"
WILL BE PROVIDED AND INSTALLED BY THE CONTRACTOR.
ROMTEC UTILITIES WILL NOT INSTALL ANY OF THE
COMPONENTS SHOWN ON THIS PAGE.

NOTE: ALL DIMENSIONS AND ELEVATIONS SHOWN
ARE NOMINAL DIMENSIONS. IT IS THE RESPONSIBILITY
OF THE ON-SITE CONTRACTOR OR ROMTEC UTILITIES
CUSTOMER (NOT ROMTEC UTILITIES) TO VERIFY THE
ACCURACY OF ANY CRITICAL DIMENSIONS OR ELEVATIONS
PRIOR TO SETTING OR INSTALLING ANY EQUIPMENT.

VERIFY SCALE
BAR IS ONE INCH ON
ORIGINAL DRAWING
0 1"
IF NOT ONE INCH ON
THIS SHEET ADJUST
SCALES ACCORDINGLY

DSN - AD	8/15/14	NNA
DRN - AD	8/8/14	NNA
CKD - AD	8/5/14	NNA
REV	DATE	APPROV
1	8/5/14	NNA
2	8/8/14	NNA
3	8/15/14	NNA

COMPONENT
DRAWING

**ROMTEC
UTILITIES**
18240 NORTH BANK ROAD
ROSEBURG, OREGON 97470
(541) 496-9678
FAX (541) 496-0804

VENICE PP
4ft WET WELL - 3in PIPING

SHEET
1 OF 1
JOB NUMBER
RMTC
0000