

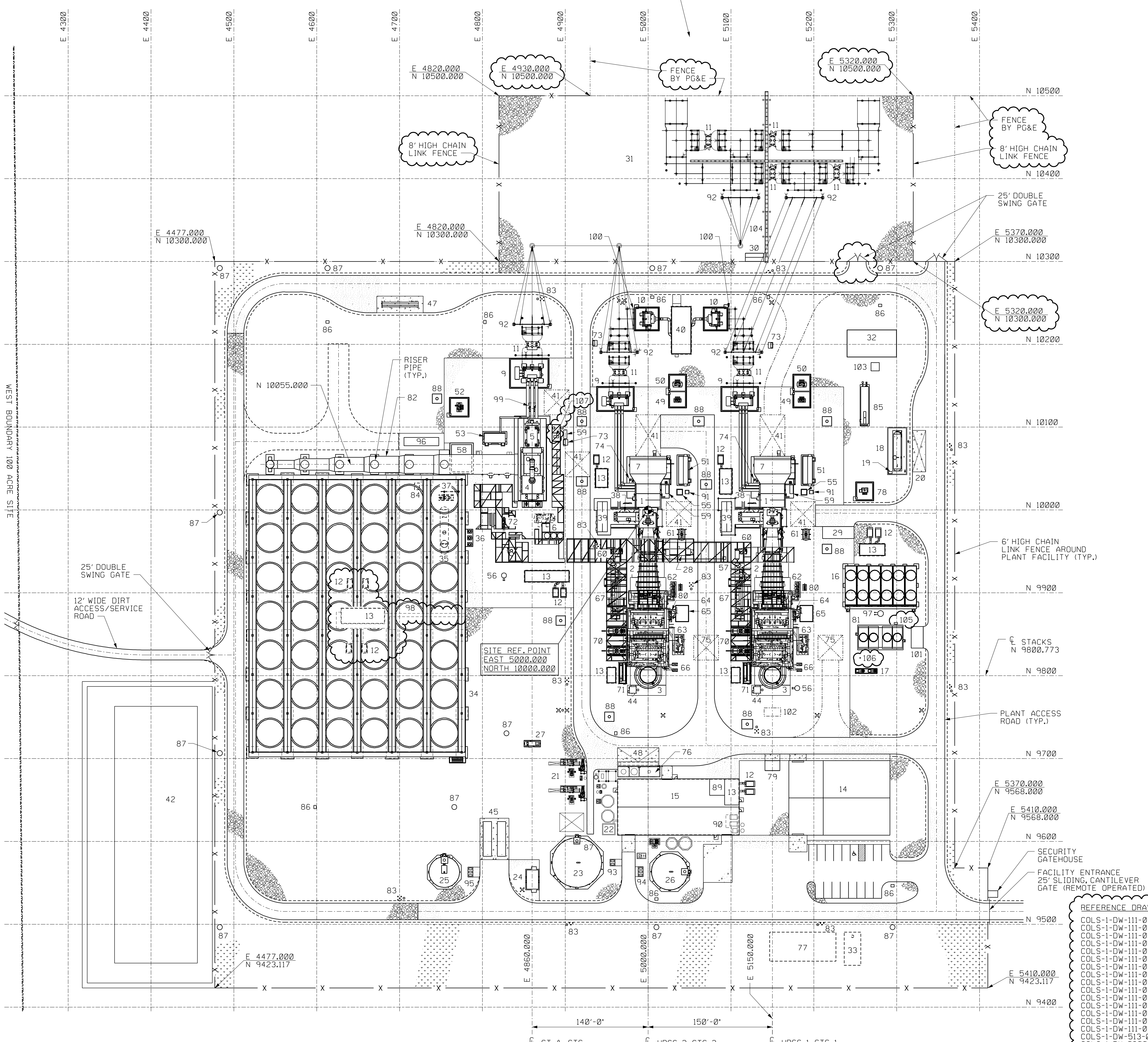
COORDINATE SYSTEM:

LOCATION	SITE COORDINATE	PLANT COORDINATE
CENTERLINE OF CTG-2 TURBINE BASE ANCHOR SUPPORT NORTH/ SOUTH	N 2259519.171	N 10000.000
CENTERLINE OF CTG-2 UNIT EAST/ WEST	E 6485331.470	E 5000.000
TOP OF CTG FOUNDATION CONC.	EL. 183'-0"	EL. 100'-0"
TOP OF HRSG FOUNDATION CONC.	EL. 183'-0"	EL. 100'-0"
CTG EQUIPMENT BASELINE TOP OF GROUT	EL. 183'-1 1/2"	EL. 100'-1 1/2"
BOTTOM OF NOOTER/ERIKSEN HRSG-1&2 FRAME BASE PL. & STACK BASE RING EL. 0'-0"	EL. 183'-3"	EL. 100'-3"

(SITE COORDINATES BASED ON CALIFORNIA STATE PLANE GRID NAD83, ZONE 2)

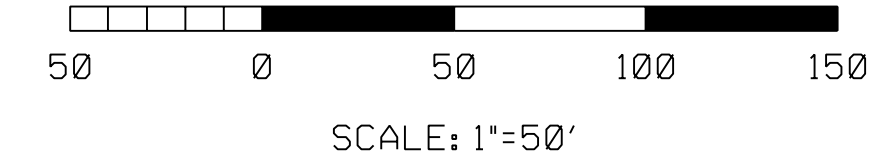
NEW PLANT DESCRIPTION

- 1 COMBUSTION TURBINE
- 2 HEAT RECOVERY SYSTEM GENERATOR (HRSG)
- 3 HRSG EXHAUST STACK
- 4 STEAM TURBINE
- 5 STEAM TURBINE GENERATOR
- 6 STEAM TURBINE LUBE OIL SKID
- 7 COMBUSTION TURBINE AIR INLET
- 8 NOT USED
- 9 CSU TRANSFORMER
- 10 STATION SERVICE TRANSFORMER
- 11 HIGH VOLTAGE BREAKER
- 12 BUS TRANSFORMERS
- 13 POWER DISTRIBUTION CENTER
- 14 ADMIN/CONTROL/MAINT/WHSE BUILDING (11,000 S.F.)
- 15 WATER TREATMENT BUILDING (10,000 S.F.)
- 16 FIN FAN COOLERS
- 17 CLOSED COOLING WATER PUMPS
- 18 AMMONIA STORAGE TANK
- 19 AMMONIA FORWARDING PUMPS
- 20 AMMONIA UNLOADING AREA
- 21 ZERO LIQUID DISCHARGE AREA (OUTDOOR)
- 22 WASTE WATER SUMP
- 23 RAW/ FIRE WATER STORAGE TANK
- 24 FIRE WATER PUMP HOUSE
- 25 DEMINERALIZED WATER STORAGE TANK
- 26 FILTERED WATER STORAGE TANK
- 27 OIL WATER SEPARATOR
- 28 SAMPLE PANEL ENCLOSURE
- 29 CYCLE CHEMICAL FEED SHELTER
- 30 SWITCHYARD CONTROL HOUSE (1,800 S.F.)
- 31 230KV SWITCHYARD
- 32 GAS METERING AREA
- 33 SEPTIC TANK
- 34 AIR COOLED CONDENSER (ACC)
- 35 CONDENSATE TANK AND DEAERATOR
- 36 CONDENSATE PUMPS
- 37 STEAM JET AIR EJECTOR (SJA/E) SKIDS (HOLDING & HOGGING)
- 38 ACCESSORY MODULE
- 39 PACKAGED ELECTRICAL ELECTRONIC CONTROL CENTER (PEECC)
- 40 MEDIUM VOLTAGE SWITCHGEAR ENCLOSURE
- 41 PLANT MAINTENANCE AREAS
- 42 STORMWATER DETENTION BASIN
- 43 NOT USED
- 44 CEM. SHELTER
- 45 DEMINERALIZED WATER TRAILERS
- 46 NOT USED
- 47 HYDROGEN STORAGE AREA
- 48 CHEMICAL UNLOADING AREA
- 49 CTG EXCITATION TRANSFORMER
- 50 CTG ISOLATION TRANSFORMER
- 51 CTG LCI / EXCITATION COMPARTMENT
- 52 STG EXCITATION TRANSFORMER
- 53 STG EXCITATION COMPARTMENT
- 54 NOT USED
- 55 DC LINK REACTOR
- 56 AREA SUMP
- 57 WATER WASH SKID
- 58 ACC SUMP AND PUMPS
- 59 CO2 BOTTLE STORAGE RACK
- 60 CTG FIRE PROTECTION SKID
- 61 WASH WATER DRAIN TANK (UNDERGROUND)
- 62 DUCT BURNER SKID
- 63 AIG SKID
- 64 BLOWDOWN TANK
- 65 BLOWDOWN TANK SUMP AND PUMPS
- 66 RECIRCULATION PUMPS
- 67 FUEL GAS CONDITIONING SYSTEM SKID
- 68 NOT USED
- 69 NOT USED
- 70 BOILER FEEDWATER PUMPS
- 71 HRSG STARTOWER
- 72 GLAND STEAM CONDENSER
- 73 FIRE PROTECTION VALVE ENCLOSURE
- 74 AIR PROCESSING UNIT
- 75 HRSG CATALYST REMOVAL AREA
- 76 CHEMICAL STORAGE AREA
- 77 LEACH FIELD
- 78 ALTERNATE POWER TRANSFORMER
- 79 OIL & CHEMICAL STORAGE ENCLOSURE
- 80 DUCT BURNER FUEL GAS PRESSURE REDUCING STATION
- 81 WET SURFACE AIR COOLER (WSAC)
- 82 STEAM TURBINE DUCT
- 83 FIRE HYDRANT
- 84 A.C.C. CLEANING SKID
- 85 WATER BATH HEATER
- 86 STORM DRAINAGE CATCH BASIN
- 87 STORM DRAINAGE MANHOLE
- 88 ELECTRICAL MANHOLE
- 89 POTABLE WATER EQUIPMENT
- 90 COMPRESSED AIR EQUIPMENT
- 91 AC LINE REACTOR
- 92 DEAD END STRUCTURE
- 93 RAW WATER FORWARDING PUMPS
- 94 FILTERED WATER FORWARDING PUMPS
- 95 DEMINERALIZED WATER FORWARDING PUMPS
- 96 TEMPORARY CONDENSATE POLISHER
- 97 WET SURFACE AIR COOLER (WSAC) SUMP
- 98 PDC ASPHALT WALKWAY
- 99 PT & SURGE PROTECTION CUBICLE
- 100 CIRCUIT SWITCHER
- 101 WSAC CHEMICAL FEED SHELTER
- 102 CO2 RECOVERY AREA
- 103 FUEL GAS DRY SCRUBBER SKID
- 104 ELECTRICAL TRENCH
- 105 WSAC SAMPLE PANEL
- 106 CLOSED COOLING CHEMICAL FEED TANK
- 107 ST HYDROGEN GENERATOR



LEGEND

[Pattern]	GRAVEL
[Pattern]	CONCRETE
[Pattern]	ASPHALT
[Pattern]	GRASS



- REFERENCE DRAWINGS:**
- COLS-1-DW-111-002-001
 - COLS-1-DW-111-002-003
 - COLS-1-DW-111-002-101
 - COLS-1-DW-111-002-102
 - COLS-1-DW-111-002-103
 - COLS-1-DW-111-002-104
 - COLS-1-DW-111-002-201
 - COLS-1-DW-111-002-202
 - COLS-1-DW-111-002-203
 - COLS-1-DW-111-002-204
 - COLS-1-DW-111-002-301
 - COLS-1-DW-111-002-302
 - COLS-1-DW-111-002-303
 - COLS-1-DW-111-002-304
 - COLS-1-DW-111-002-305
 - COLS-1-DW-513-002-001
 - COLS-1-DW-030001-CGS-G-S001
- OVERALL SITE PLAN**
- WATER TREATMENT/ZLD AREA - GRADE EL.
 - HRSG-1 AREA - GRADE EL.
 - HRSG-1 AREA - EL. 155'-2"
 - CT-1 AREA - GRADE EL.
 - CT-1 & HRSG-1 AREA - EL. LOOKING EAST
 - HRSG-2 AREA - GRADE EL.
 - HRSG-2 AREA - EL. 155'-2"
 - CT-2 AREA - GRADE EL.
 - CT-2 & HRSG-2 AREA - EL. LOOKING WEST
 - ST AREA - GRADE EL.
 - ST AREA - EL. 121'-6"
 - ST AREA - EL. 142'-9"
 - ST AREA - ELEV. LOOKING NORTH
 - ST AREA - ELEV. LOOKING EAST
 - WATER TREATMENT BLDG. - F.F. EL. 99'-6"
 - 230KV SWITCHYARD SITE PLAN

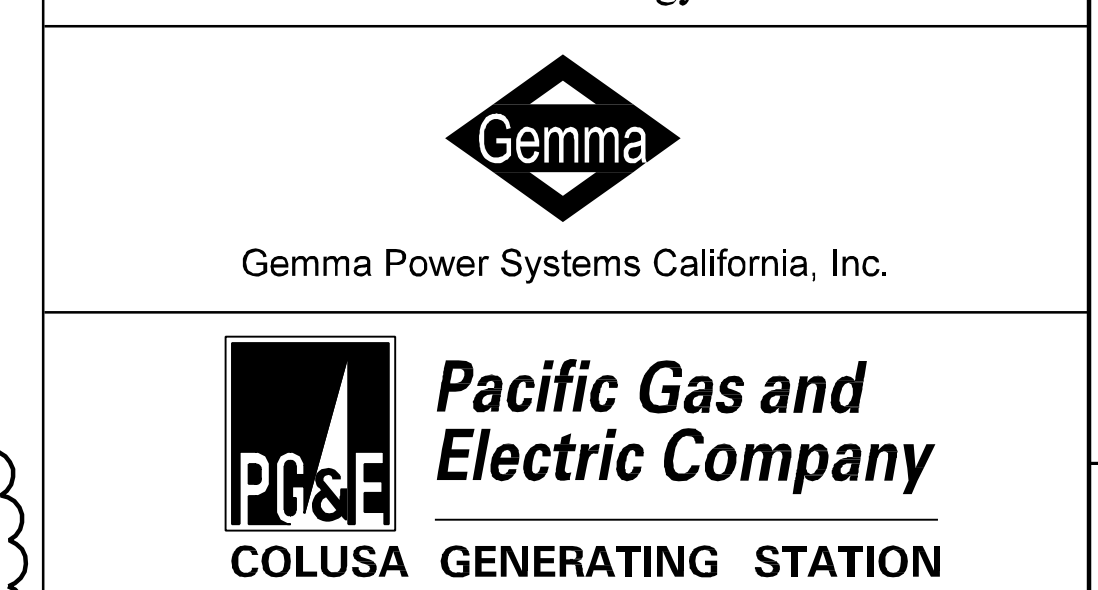
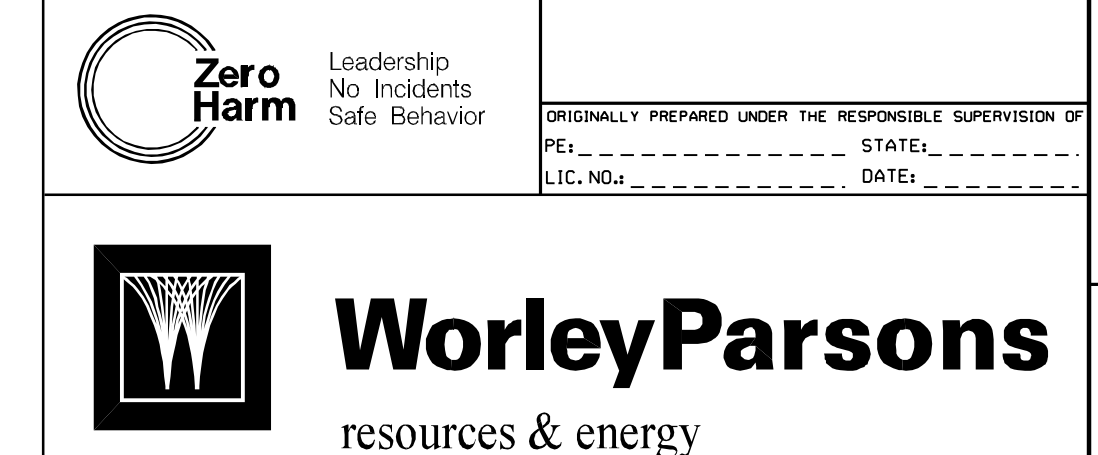
REV	DATE	DESCRIPTION	PREPARED	CHECKED	DESIGNED	IN CHARGE	PROJECT MANAGER
J	01/14/08	REV. ARRANGEMENT OF SOUTHWEST W/ ZLD AREA & AS INDICATED	RWB	JW	RWB	SJR	DMW
H	01/14/08	REVISED AS INDICATED	RWB	JW	RWB	SJR	DMW
G	01/14/08	REVISED AS INDICATED	RWB	JW	RWB	SJR	DMW
F	01/14/08	REVISED AS INDICATED	RWB	JW	RWB	SJR	DMW
E	01/14/08	GENERAL UPDATES	RWB	JW	RWB	SJR	DMW
D	01/14/08	GENERAL UPDATES	RWB	JW	RWB	SJR	DMW
C	01/14/08	GENERAL UPDATES	RWB	JW	RWB	SJR	DMW
B	01/14/08	GENERAL UPDATES	RWB	JW	RWB	SJR	DMW
A	01/14/08	INITIAL PROGRESS ISSUE	RWB	JW	RWB	SJR	DMW

PRELIMINARY STATUS DATE REPRESENTS GENERAL DESIGN CONCEPTS BASED ON ASSUMPTIONS. REVIEWED NOT CHECKED.

APPROVED STATUS DATE REPRESENTS REVIEWED AND APPROVED DESIGN. ANY PORTION MARKED 'HOLD' RETAINS PRELIMINARY STATUS.

ORIGINATING PERSONNEL PROFESSIONAL ENGINEER'S SEAL

DRAWN BY: RWB
CHECKED BY: J. WORK
LEAD DESIGNER: R. BREISCH
ENGINEER/TECH SPECIALIST: S.J. RUZZE
PROJECT ENGINEERING MANAGER: D.M. WITZEL
PROJECT MANAGER: M.A. GENCER



GENERAL ARRANGEMENT SITE PLAN

SCALE: 1"=50' DRAWING SIZE: ANSI E (44" x 34")

WORLEYPARSONS INC. NO. COLS-1-DW-111-002-002 REV J