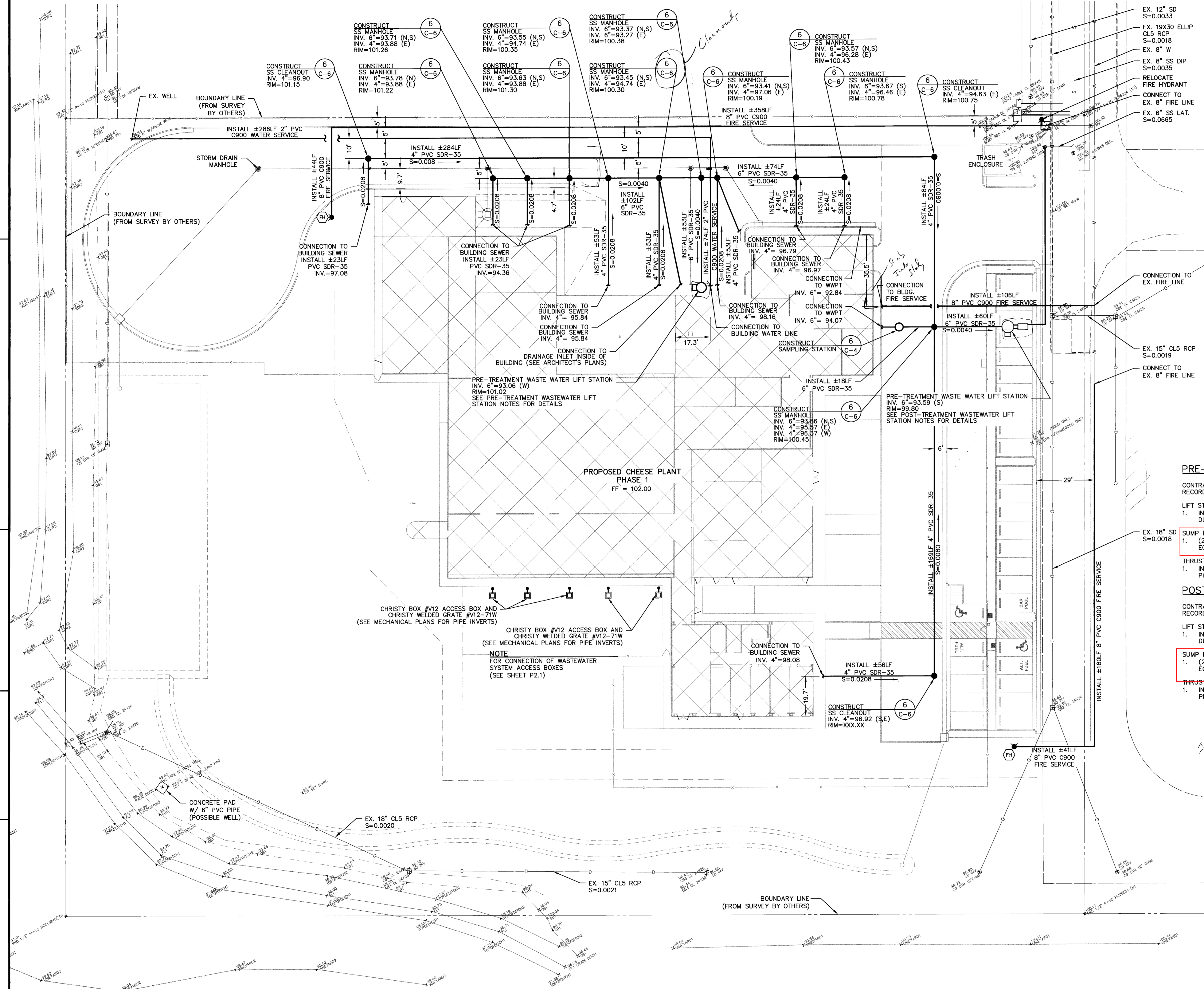


This drawing is the property of E. A. Bonelli & Associates, Inc. and shall not be reproduced, copied, lent or disposed of directly or indirectly for any purpose other than that for which it is specifically authorized. All rights reserved. Copyright © E. A. Bonelli & Associates, Inc. All dimensions on these drawings shall have precedence over verbal instructions, contractor field notes, and be responsible for all drawings and conditions on the job and this office must be notified of any variations from the drawings and conditions shown by these drawings. Shop details must be submitted to this office for review before proceeding with fabrication.



- ### SEWER NOTES
- SEWER LATERALS SHALL BE PVC SDR-35 GRAVITY SEWER PIPE AND FITTINGS, AND SHALL BE INSTALLED PER MANUFACTURER'S REQUIREMENTS, OR APPROVED EQUAL.
 - ALL WORK SHALL BE IN CONFORMANCE WITH THE CALIFORNIA PLUMBING CODE AND LATEST REVISIONS.
 - UNLESS OTHERWISE NOTED, ALL SEWERS SHALL BE INSTALLED AT A MIN. SLOPE OF 1%.
 - TRENCH COMPACTION IN PAVED AREAS SHALL BE 95% MIN. RELATIVE COMPACTION FOR THE TOP TWO FEET, BACKFILL BELOW TWO FEET AND YARD AREAS SHALL BE 90% MIN. RELATIVE COMPACTION.
 - THE CONSTRUCTION OF SEWER LATERALS SHALL COMMENCE AT THE LOWEST POINT OF THE SYSTEM (I.E. AT A MANHOLE OR THE END OF AN EXISTING MAIN). THE INSTALLATION OF SEWER LATERALS SHALL ALWAYS PROCEED UPSTREAM IN ALL LOCATIONS.
 - ALL SANITARY SEWER CONSTRUCTION SHALL BE IN ACCORDANCE WITH SONOMA COUNTY WATER AGENCY "DESIGN AND CONSTRUCTION STANDARDS FOR SANITATION FACILITIES", INCLUDING STANDARD DRAWINGS, LATEST REVISION, (SCWA STD.)
 - ALL SANITARY SEWER CONSTRUCTION SHALL BE INSPECTED BY SONOMA COUNTY PERMIT AND RESOURCE MANAGEMENT DEPARTMENT SANITATION SECTION (707-565-3551). 48 HOUR ADVANCE NOTICE IS REQUIRED FOR ALL INSPECTIONS.
 - THE CONTRACTOR SHALL MARK ALL SANITARY SEWER LATERALS AS PER SCWA STD. DWG. NO. 121.
 - ALL SANITARY SEWER LATERALS SHALL BE SDR-35 PVC PER SCWA STD., UNLESS SPECIFIED TO BE DUCTILE IRON PIPE.
 - DUCTILE IRON LATERALS SHALL BE ANSI/AWWA C-151/A21.51 THICKNESS CLASS 50 WITH A POLYETHYLENE FILM ENCASMENT PER SCWA STD.
 - SANITARY SEWER MANHOLES SHALL BE PER SCWA STD. DWG. NO. 100-A.
 - SANITARY SEWER CLEANOUT SHALL BE PER SCWA STD. DWG. NO. 132.

- ### WATER NOTES
- WATER PIPE FOR FIRE LINE SHALL BE POLY VINYL CHLORIDE (PVC) PIPE CONFORMING TO AWWA C900 CLASS 150 AND SHALL BE INSTALLED PER MANUFACTURER'S REQUIREMENTS, OR APPROVED EQUAL. MINIMUM 36 INCH COVER REQUIRED.
 - THRUST BLOCKS SHALL BE INSTALLED PER COUNTY STANDARDS, TO SECURE ALL CHANGES IN DIRECTION. NO BENDING OR CURVING OF PIPE WILL BE ALLOWED, EXCEPT AS PERMITTED BY THE PIPE MANUFACTURER.
 - TRENCH BLOCKING FOR ON-SITE WATER PIPE SHALL BE INSTALLED PER THE UNIFORM BUILDING CODE (LATEST EDITION).
 - FIRE HYDRANT ASSEMBLIES SHALL BE INSTALLED PER COUNTY STANDARD.
 - TRENCH COMPACTION IN PAVED AREAS SHALL BE 95% MIN. RELATIVE COMPACTION FOR THE TOP TWO FEET, BACKFILL BELOW TWO FEET AND YARD AREAS SHALL BE 90% MIN. RELATIVE COMPACTION.

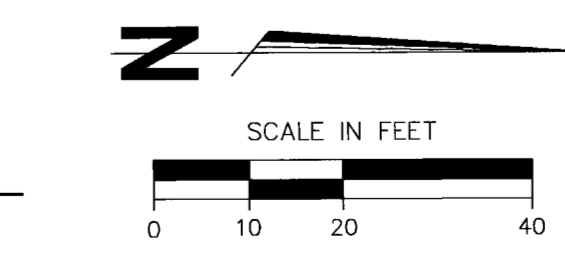
- ### CONSTRUCTION SYMBOLS
- (AC) ADJUST TO FINISH GRADE
 - (FH) ALL FIRE HYDRANT PER COUNTY OF SONOMA STANDARD
 - (MH) CONSTRUCT SSMH PER DWG. NO. 100-A

PRE-TREATMENT WASTEWATER LIFT STATION NOTES

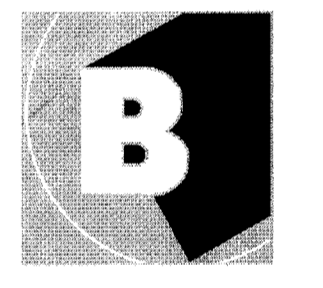
- CONTRACTOR SHALL SUBMIT MANUFACTURER'S SPECIFICATION TO THE ENGINEER OF RECORD FOR APPROVAL PRIOR TO CONSTRUCTION
- LIFT STATION
- INSTALL TRAFFIC RATED 6'-0" INSIDE DIA. BY 19'-0" DEEP ROMTEC UTILITIES DUPLEX LIFT STATION OR EQUIVALENT.
- SUMP PUMP
- (2) STAINLESS STEEL JACKET ESSCO VORTEX PUMPS (MODEL # 3X8) OR EQUIVALENT CAPABLE OF PRODUCING A MINIMUM OF 105 GPM AT 36FT TDH.
- THRUST BLOCKS
- INSTALL THRUST BLOCKS PER DETAIL 3/C-5 FOR ALL ELBOWS IN PRESSURIZED PIPE.

POST-TREATMENT WASTEWATER LIFT STATION NOTES

- CONTRACTOR SHALL SUBMIT MANUFACTURER'S SPECIFICATION TO THE ENGINEER OF RECORD FOR APPROVAL PRIOR TO CONSTRUCTION
- LIFT STATION
- INSTALL TRAFFIC RATED 6'-0" INSIDE DIA. BY 19'-0" DEEP ROMTEC UTILITIES DUPLEX LIFT STATION OR EQUIVALENT.
- SUMP PUMP
- (2) STAINLESS STEEL JACKET ESSCO VORTEX PUMPS (MODEL # 3X8) OR EQUIVALENT CAPABLE OF PRODUCING A MINIMUM OF 195 GPM AT 20FT TDH.
- THRUST BLOCKS
- INSTALL THRUST BLOCKS PER DETAIL 3/C-5 FOR ALL ELBOWS IN PRESSURIZED PIPE.



NO.	DATE	REVISION	BY
A			
B			
C			
D			
E			
F			
G			
H			



E. A. Bonelli
+
Associates, Inc.
Architects & Engineers

8450 Edes Avenue, Oakland, CA 94621
Phone: (510)740-0155
Fax: (510)740-0160
Website: www.eabonelli.com

2922 W. Main Street, Visalia, CA 93291
Phone: (559)627-6448
Fax: (559)627-6483



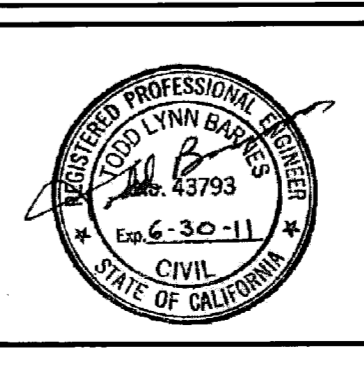
PROJECT NAME
LAURA CHENEL CHEVRE CHEESE

PROJECT ADDRESS

SHEET TITLE
WATER & SEWER PLAN

SCALE	AS NOTED	SHEET NO.
DRAWN	P&P	C-3
CHECKED	T. BARNES	
APPROVED		
DATE	5-15-2009	
JOB NO.	108309V1	

EST. 1968
PROVOST & PRITCHARD
CONSULTING GROUP
An Employee Owned Company
130 NORTH GARDEN STREET
VISALIA, CALIFORNIA 93291-6382
559/636-1168 FAX 559/636-1177
www.ppgeng.com



COPYRIGHT 2009 BY PROVOST & PRITCHARD ENGINEERING GROUP, INC. ALL RIGHTS RESERVED. ENGINEERING GROUP, INC. ALL RIGHTS RESERVED. THE FIRM OF PROVOST & PRITCHARD ENGINEERING GROUP, INC. EXPRESSLY RESERVES ITS COMMON LAW COPYRIGHT AND OTHER APPLICABLE PROPERTY RIGHTS IN THESE PLANS. THESE PLANS ARE NOT TO BE REPRODUCED, CHANGED, OR COPIED IN ANY FORM OR BY ANY MEANS, WITHOUT THE WRITTEN PERMISSION AND CONSENT OF PROVOST & PRITCHARD ENGINEERING GROUP, INC. IN THE EVENT OF UNAUTHORIZED REUSE OF THESE PLANS BY A THIRD PARTY, THE THIRD PARTY SHALL HOLD THE FIRM OF PROVOST & PRITCHARD ENGINEERING GROUP, INC. HARMLESS, AND SHALL BEAR THE COST OF PROVOST & PRITCHARD ENGINEERING GROUP, INC.'S LEGAL FEES ASSOCIATED WITH DETECTING AND ENFORCING THESE RIGHTS.

