

NOTE:

- SITE MATERIALS, DESIGN INFORMATION, AND SERVICES NOT SUPPLIED BY ROMTEC UTILITIES:
- GRADING
- WIRING AND CONDUIT
- FENCING AND PAVING
- SITE LIGHTING
- SITE UTILITIES (WATER, POWER, ETC)
- SCADA ANTENNA
- ALL ON-SITE INSTALLATION

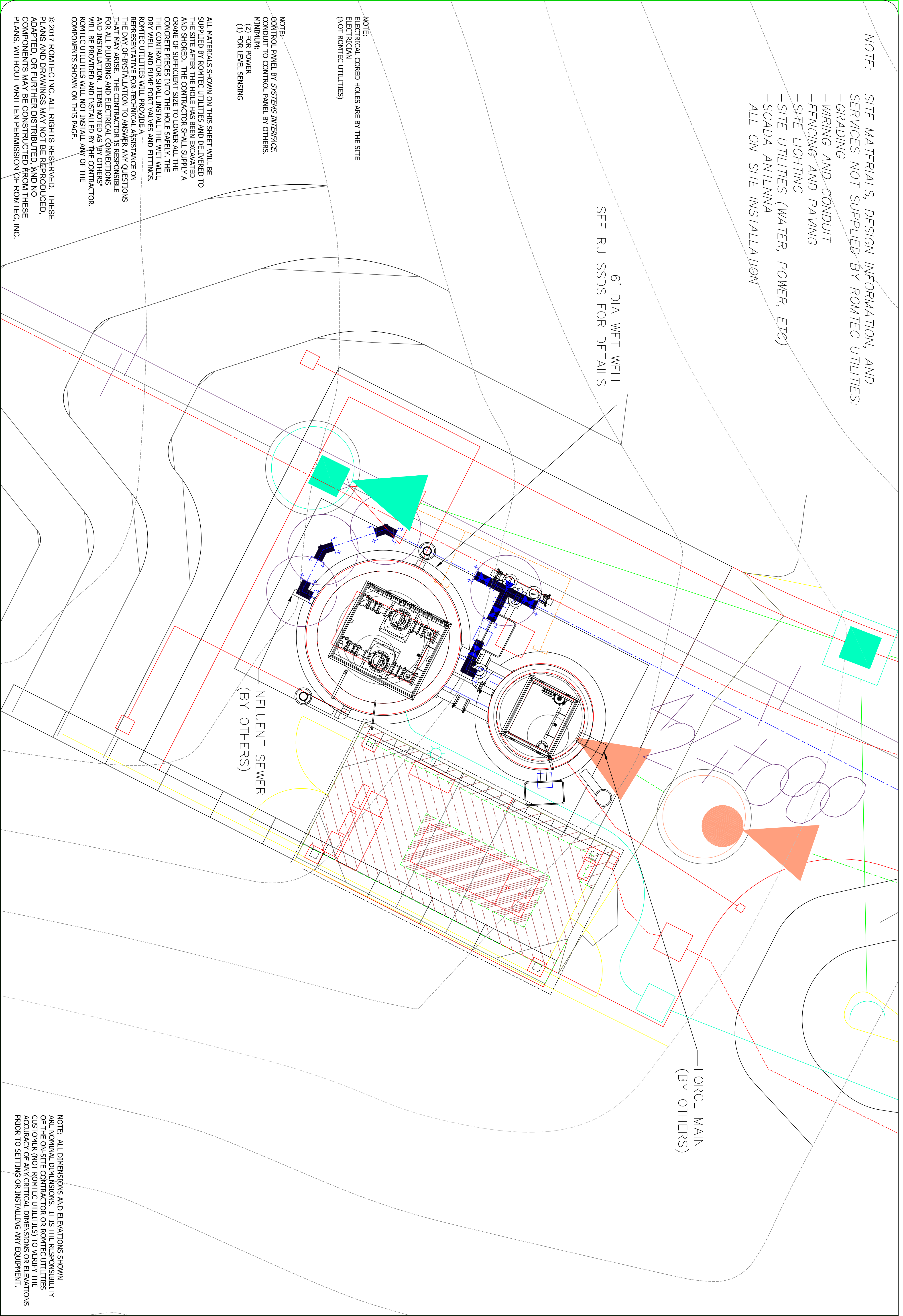
6' DIA WET WELL  
SEE RU SSDS FOR DETAILS

NOTE:  
ELECTRICAL CORED HOLES ARE BY THE SITE ELECTRICIAN (NOT ROMTEC UTILITIES)

NOTE:  
CONTROL PANEL BY SYSTEMS INTERFACE CONDUIT TO CONTROL PANEL BY OTHERS. MINIMUM:  
(1) FOR POWER  
(2) FOR LEVEL SENSING

ALL MATERIALS SHOWN ON THIS SHEET WILL BE SUPPLIED BY ROMTEC UTILITIES AND DELIVERED TO THE SITE AFTER THE HOLE HAS BEEN EXCAVATED AND SHORED. THE CONTRACTOR SHALL SUPPLY A CRANE OF SUFFICIENT SIZE TO LOWER ALL THE CONCRETE PIECES INTO THE HOLE SAFELY. THE CONTRACTOR SHALL INSTALL THE WET WELL, DRY WELL AND PUMP PORT VALVES AND FITTINGS. ROMTEC UTILITIES WILL PROVIDE A REPRESENTATIVE FOR TECHNICAL ASSISTANCE ON THE DAY OF INSTALLATION TO ANSWER ANY QUESTIONS THAT MAY ARISE. THE CONTRACTOR IS RESPONSIBLE FOR ALL PLUMBING AND ELECTRICAL CONNECTIONS AND INSTALLATION. ITEMS NOTED AS "BY OTHERS" WILL BE PROVIDED AND INSTALLED BY THE CONTRACTOR. ROMTEC UTILITIES WILL NOT INSTALL ANY OF THE COMPONENTS SHOWN ON THIS PAGE.

© 2017 ROMTEC, INC. ALL RIGHTS RESERVED. THESE PLANS AND DRAWINGS MAY NOT BE REPRODUCED, ADAPTED, OR FURTHER DISTRIBUTED, AND NO COMPONENTS MAY BE CONSTRUCTED FROM THESE PLANS, WITHOUT WRITTEN PERMISSION OF ROMTEC, INC.



NOTE: ALL DIMENSIONS AND ELEVATIONS SHOWN ARE NOMINAL DIMENSIONS. IT IS THE RESPONSIBILITY OF THE ON-SITE CONTRACTOR OR ROMTEC UTILITIES CUSTOMER (NOT ROMTEC UTILITIES) TO VERIFY THE ACCURACY OF ANY CRITICAL DIMENSIONS OR ELEVATIONS PRIOR TO SETTING OR INSTALLING ANY EQUIPMENT.

**MacDONALD ESTATES**  
**SITE LAYOUT**

JOB NUMBER  
**RMTC**  
**0000**

SHEET

**ROMTEC**  
**UTILITIES**

18240 NORTH BANK ROAD  
ROSEBURG, OREGON 97470  
(541) 496-9678  
FAX (541) 496-0804

**LAYOUT**  
**DRAWING**

VERIFY SCALE  
BAR IS ONE INCH ON ORIGINAL DRAWING

0 1"

IF NOT ONE INCH ON THIS SHEET, ADJUST SCALES ACCORDINGLY

REV	DESCRIPTION	DATE	APPROV
3	SBS HATCH, SUCTION PORT	11-3-17	KB
2	9ft DRY WELL, INCREASED HEIGHT, COMMENTS	8-11-17	KB
1	LEVELED BASE SLABS, ADDED SUB-BASE	2-25-16	KB
0	INITIAL DESIGN	12-16-15	KB
REV	DESCRIPTION	DATE	APPROV

REVISION HISTORY