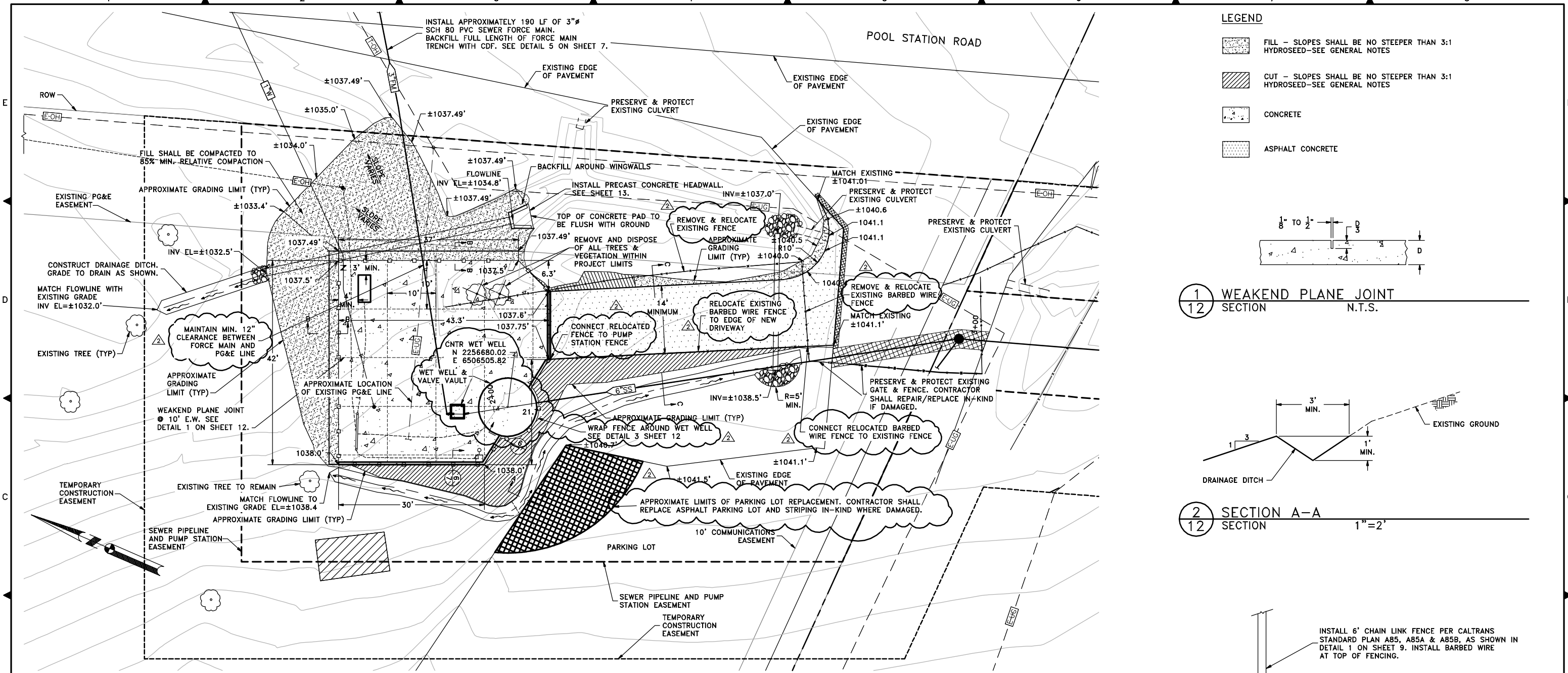


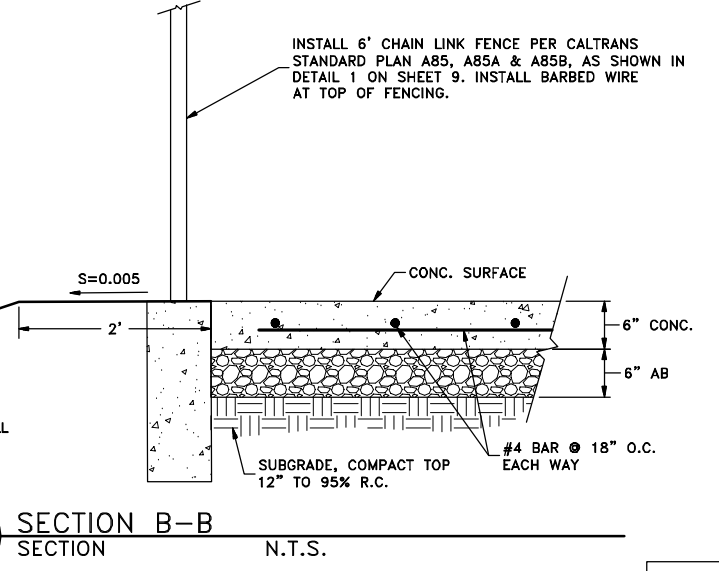
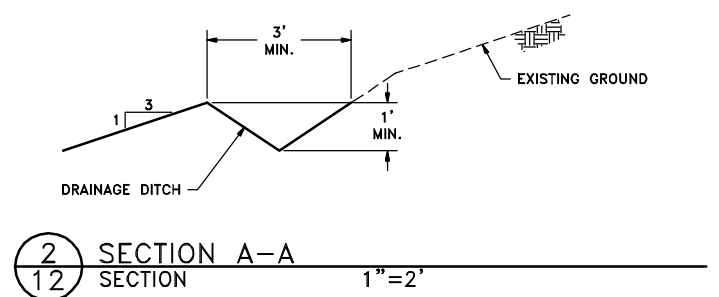
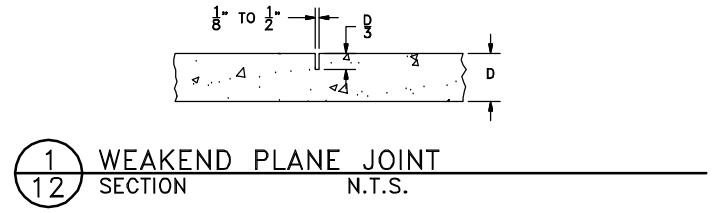
FILE SPEC: P:\0277 SASD\1070_Mountain_Oak_School\1_Construction\500_FF\Drawings_Revision\101112-Revision_2-Wet_Well_Relocation.dwg
 PLOT DATE: Nov 12, 2010 - 2:36pm



PUMP STATION GRADING PLAN
 SCALE: 1"=10'

LEGEND

	FILL - SLOPES SHALL BE NO STEEPER THAN 3:1 HYDROSEED-SEE GENERAL NOTES
	CUT - SLOPES SHALL BE NO STEEPER THAN 3:1 HYDROSEED-SEE GENERAL NOTES
	CONCRETE
	ASPHALT CONCRETE



4 SECTION C-C SECTION
12 SECTION 1"=2'



KSN INC.
KJELDSSEN SINNOCK NEUDECK
 Civil Engineers and Land Surveyors
 Post Office Box 844
 711 N. Pershing Avenue
 Stockton, CA 95201-0844
 Office: (209) 946-0268
 Faxes: (209) 946-0296
 E-mail: KSN@ksninc.com

**MOUNTAIN OAK SCHOOL
 SANITARY SEWER LINE
 CITY OF SAN ANDREAS**

PUMP STATION GRADING PLAN

Revisions		Date	By	Appr. By	Design JRT	Scale AS SHOWN	Date JULY 2010
No.	Description						
1	WET WELL & FENCE RELOCATION	11.12.10	JRT			Original Drawing Scale 0 1/2" 1"	Sheet Number 12 Of 14
2	SS LINE VERTICAL ADJUSTMENT	9.28.10	JRT				

Project File No. 0277-1070