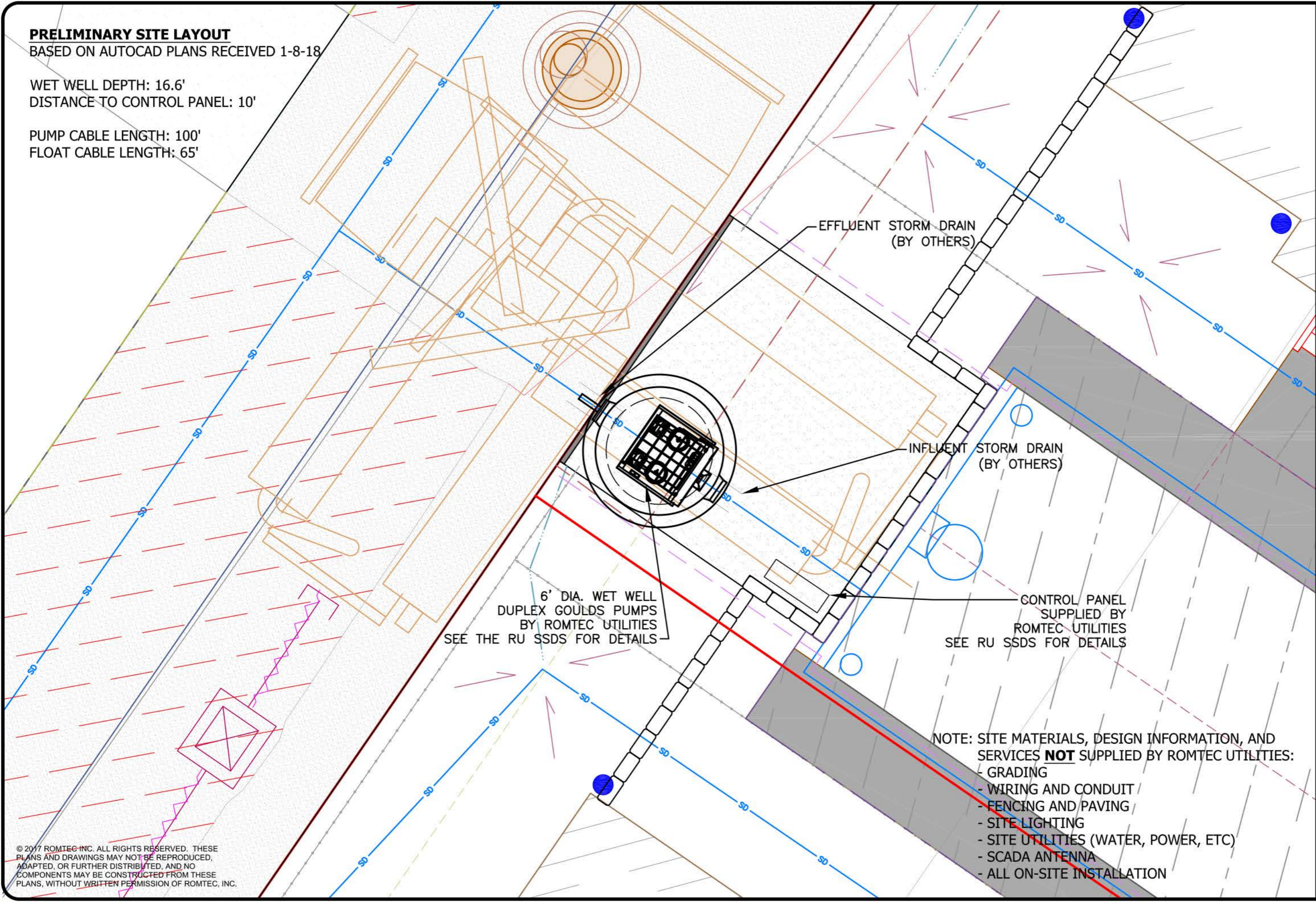


PRELIMINARY SITE LAYOUT

BASED ON AUTOCAD PLANS RECEIVED 1-8-18

WET WELL DEPTH: 16.6'
DISTANCE TO CONTROL PANEL: 10'

PUMP CABLE LENGTH: 100'
FLOAT CABLE LENGTH: 65'



6' DIA. WET WELL
DUPLEX GOULDS PUMPS
BY ROMTEC UTILITIES
SEE THE RU SSDS FOR DETAILS

EFFLUENT STORM DRAIN
(BY OTHERS)

INFLUENT STORM DRAIN
(BY OTHERS)

CONTROL PANEL
SUPPLIED BY
ROMTEC UTILITIES
SEE RU SSDS FOR DETAILS

NOTE: SITE MATERIALS, DESIGN INFORMATION, AND SERVICES **NOT** SUPPLIED BY ROMTEC UTILITIES:
- GRADING
- WIRING AND CONDUIT /
- FENCING AND PAVING /
- SITE LIGHTING
- SITE UTILITIES (WATER, POWER, ETC)
- SCADA ANTENNA
- ALL ON-SITE INSTALLATION

VERIFY SCALE
BAR IS ONE INCH ON ORIGINAL DRAWING
IF NOT ONE INCH ON THIS PLOT, SCALE ACCURATELY

DSN -	DRN - KEVIN BOGAN	REV	1	REVISED PER NEW SITE ELEVATIONS	1/29/2018	AD
CKD -		DATE		DESCRIPTION		APPROV
		DATE				
		DATE				

REVISION HISTORY

LAYOUT DRAWING

18240 NORTH BANK ROAD
ROSEBURG, OREGON 97470
(541) 496-9678
FAX (541) 496-0804

GROUP FOUR

NORTH BEND COTTAGES
SITE LAYOUT

SHEET
2 OF 2

JOB NUMBER
RMTc
0000

© 2017 ROMTEC INC. ALL RIGHTS RESERVED. THESE PLANS AND DRAWINGS MAY NOT BE REPRODUCED, ADAPTED, OR FURTHER DISTRIBUTED, AND NO COMPONENTS MAY BE CONSTRUCTED FROM THESE PLANS, WITHOUT WRITTEN PERMISSION OF ROMTEC, INC.