

- NOTES:**
- WHERE CONSTRUCTION DETAILS AND SPECIFICATIONS ARE NOTED ON THESE PLANS USE CITY OF LONE TREE STANDARD SPECIFICATIONS FOR DESIGN AND CONSTRUCTION.
 - ALL DIMENSIONS ARE TO FLOWLINE UNLESS OTHERWISE NOTED.
 - SEE SHEET T1 FOR BENCHMARK AND BASIS OF BEARINGS.
 - SEE SHEET GN1 FOR GENERAL NOTES AND TYPICAL SECTIONS RELATED TO THESE PLANS.
 - SEE DT1 THRU DT5 FOR DETAILS RELATED TO THESE PLANS.

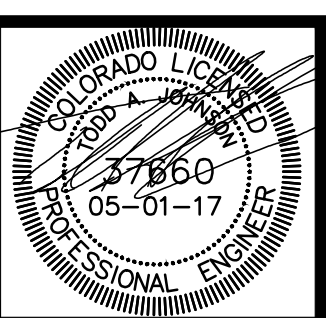
- CONSTRUCTION NOTES:**
- 4" MOUNTABLE COMBINATION CURB, GUTTER AND SIDEWALK PER DETAIL SP.2 ON SHEET DT1.
 - 6" VERTICAL CURB AND GUTTER (CATCH) PER DETAIL SP.1 ON SHEET DT1.
 - 6" MEDIAN VERTICAL CURB AND GUTTER (SPILL) WITH 1 FT PAN, PER DETAIL SP.1 ON SHEET DT1.
 - 8 FT CROSSSPAN TYPE 1 PER DETAIL SP.6 ON SHEET DT1.
 - CURB RAMPS FOR PHYSICALLY HANDICAPPED PER LONE TREE DETAIL 1 ON SHEET DT1.
 - MID-BLOCK RAMP FOR PHYSICALLY HANDICAPPED PER LONE TREE DETAIL 2 ON SHEET DT2.
 - 4" MOUNTABLE CURB AND GUTTER PER DETAIL SP.2 ON SHEET DT1.
 - 6" VERTICAL CURB AND GUTTER (CATCH) WITH 5' ATTACHED SIDEWALK PER DETAIL SP.1 AND SP.2 ON SHEET DT1.
 - 6" MEDIAN VERTICAL CURB AND GUTTER (CATCH) WITH 1 FT PAN, PER DETAIL SP.1 ON SHEET DT1.

PATH: P:\CENTURY RG TGGC\AD\CVL\IT PUMP STATION SITE PLAN\17SP1.DWG
 PLOTTED BY: ROD SIGMON PLOT DATE: 5/4/2017 4:06 PM
 XREFS: 10wPumpHouse_TruckTurn, 14KWRD, 10put, 10EUT, 10EPN, 10PPN, 10BASE, 10ANNO, 14TB.

DATE	REVISION	DESCRIPTION
	6	
	5	
	4	
	3	
	2	
	1	

Drawing Name	17SP1.dwg
Job Number	SB16-43R
Prepared For	CENTURY COMMUNITIES

Designer	Drafter	Checked
RLS	JAH	TAJ



Calibre
 Calibre Engineering, Inc.
 9090 South Ridgeline Boulevard, Suite 105
 Highlands Ranch, CO 80129 (303) 730-0434
 www.calibre-engineering.com
 Construction Management Civil Engineering Surveying

RIDGEGATE - SECTION 22, FILING NO. 1
ROADWAY AND STORM SEWER PLANS
PUMP HOUSE SITE PLAN