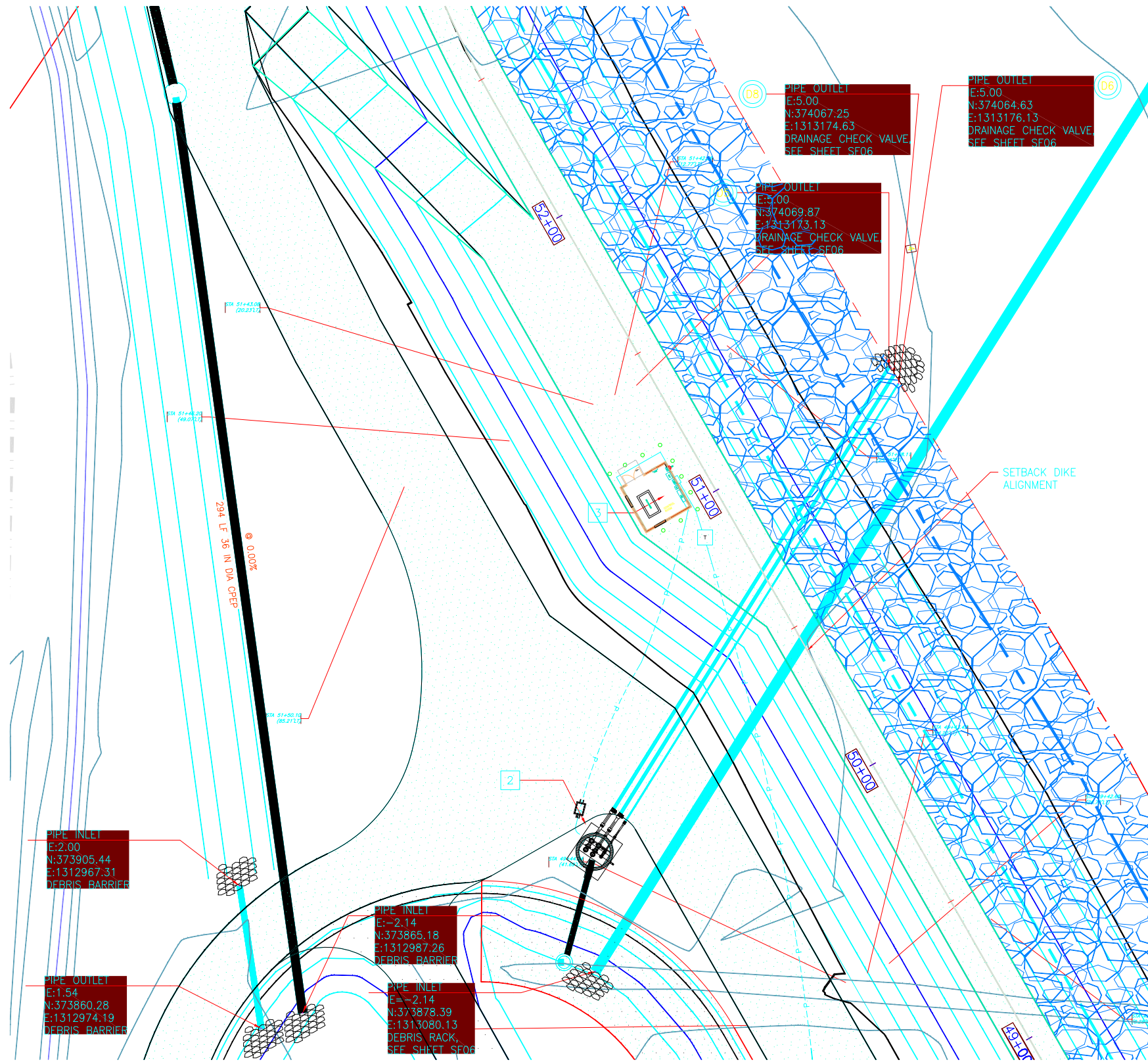


XREF LIST
 Ltscale: 1
 Resolved
 TTBK
 OSISEAL
 3784-GRDG
 3784-TOPO
 3784-BASE
 3784-PCHN
 3784-PROF
 3784-PDRN

R:\STATION\Washington\Smith Island Drainage\PLANS\SITE PLAN\3-24-15\SFD3 - Standard\SFD3 - with RU equip - 3-25-15.dwg Layout Name: SFD3
 adake Mar 26, 2015 - 12:52pm



CONSTRUCTION NOTES

1. INSTALL TEMPORARY SHORING WALL AND DEWATERING SYSTEM PER CONTRACTOR SUBMITTAL.
2. CONSTRUCT PUMP STATION.
3. CONSTRUCT PUMP CONTROL BUILDING.

GENERAL NOTES:

1. SEE SHEET SFO3 FOR PIPE PROFILES. PIPE PROFILES ARE SHOWN ALONG CENTERLINE OF PIPE.
2. CATCH BASIN PLACEMENT SHALL BE PER WSDOT STD DETAIL B-10.20-00. COORDINATES SHOWN ARE TO CENTER OF STRUCTURE.
3. PIPE LENGTHS SHOWN ARE FROM START OF PIPE TO CENTER OF STRUCTURE, OR END OF PIPE WHEN NO STRUCTURE IS LOCATED.

LEGEND

- DRAINAGE GATE, SEE SCHEDULE ON SHEET SF06
- CONTOUR (MINOR-EXISTING)
- CONTOUR (MAJOR-PROPOSED)
- RIPRAP
- GRAVEL FILTER MATERIAL

STORM STRUCTURE TABLE	
STRUCTURE NAME:	NORTHING/ EASTING
CB100, TYPE 2-48" OVERFLOW STRUCTURE	N:373881.24 E:1313070.18
CB200, TYPE 2-48" OVERFLOW STRUCTURE	N:374156.64 E:1312946.93
PUMP STATION	N:373916.30 E:1313079.82

POND GRADING TABLE

POINT	NORTHING	EASTING
P		



Snohomish County Planning and Development Services
 APPROVED FOR CONSTRUCTION

By: _____
 Randolph R. Steight, P.E., P.L.S.
 R/W Permit No. _____

PFN: 15-102188LDA

CALL BEFORE YOU DIG IF THIS DRAWING IS LESS THAN 22" X 34", IT HAS BEEN REDUCED. SCALE ACCORDINGLY.

PERMIT PLAN - NOT FOR CONSTRUCTION

Last Saved By: adake Mar 26, 2015 - 12:52pm			
REGION NO.	STATE	FED. AID PROJ. NO.	SURVEY NO.
10	WASH.		
DESIGNED BY: GSL, DAS		DRAWN BY: AK	
FIELD BOOK(S):		UPI#	
1/15	1	PERMIT PLAN SUBMITTAL	GSL DAS
DATE	NO.	REVISION	BY



REVIEWED AND APPROVED BY:
 OWEN B. CARTER, P.E.
 SNOHOMISH COUNTY ENGINEER
 DATE APPROVED:

SNOHOMISH COUNTY
 DEPARTMENT OF
 PUBLIC WORKS
 PROJECT NO. RR49206

SMITH ISLAND
 ESTUARY RESTORATION
 POND OUTLET ENLARGED
 PLAN

REFERENCE SHEET NO.
 SFO3
 SHEET 34
 OF 67 SHEETS