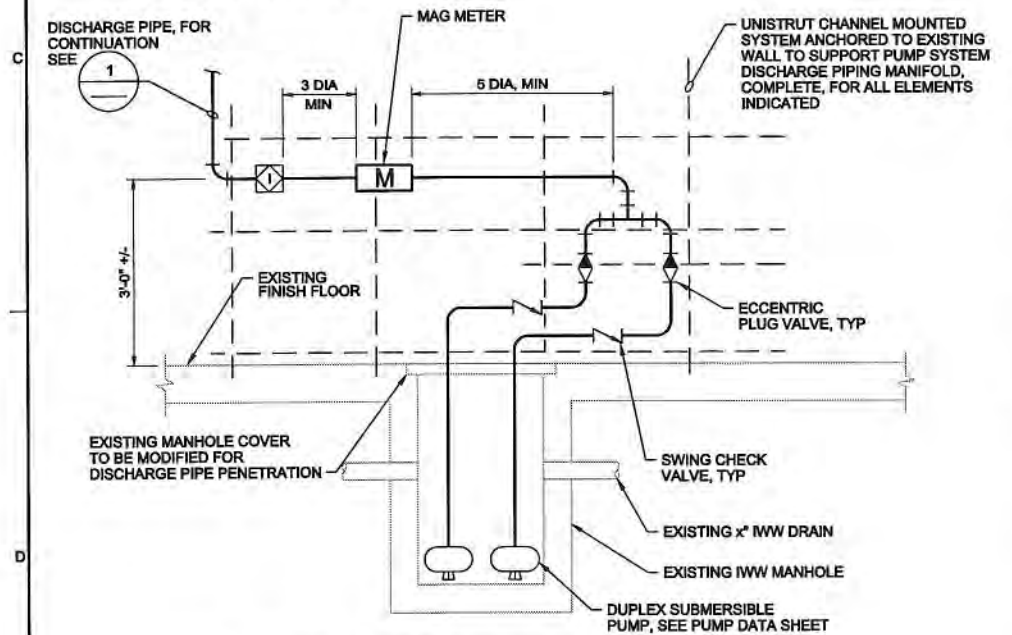


**GENERAL NOTES:**

- 1. PIPE ROUTING TO BE DETERMINED BY CONTRACTOR.
- 2. SUPPORT PIPE WEIGHT AT 12' MAXIMUM SPAN FROM BUILDING STRUCTURAL MEMBERS SUCH AS THE MAIN ARCH FRAMES, ROOF SUPPORT PURLINS OR SIDING SUPPORT GIRTS.
- 3. NO LONGITUDINAL OR TRANSVERSE SEISMIC RESTRAINT REQUIRED FOR SEISMIC DESIGN CATEGORY "B".
- 4. 3" FM TO SLOPE (1/8" PER FOOT) BACK TO EXISTING MANHOLE.

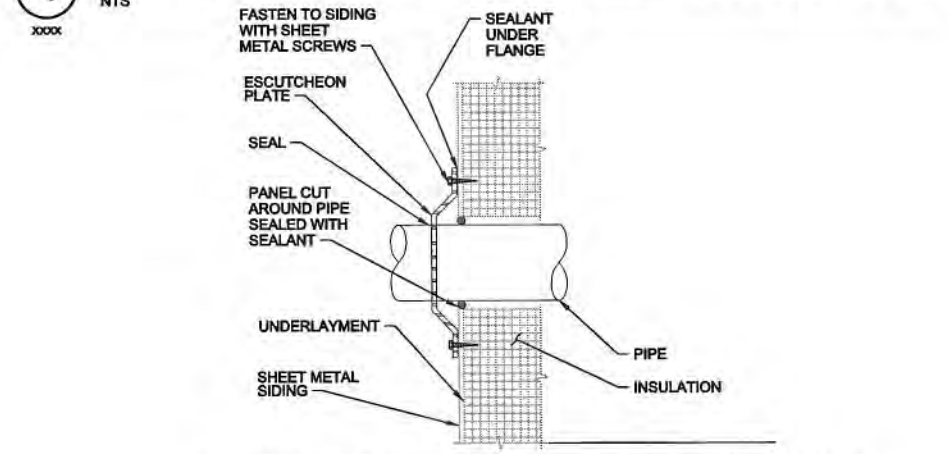
**KEYED NOTES:**

- 1 SUPPORT PIPE VERTICALLY WITH THE BUILDING SIDING SUPPORTS USING PIPE CLAMP OR U-BOLTS PER DETAIL 6.
- 2 HORIZONTAL PIPE SUPPORT SIMILAR TO DETAILS 4 AND 5. LOADING EQUAL 80 LBS VERTICALLY PER SUPPORT.
- 3 ALL EXTERIOR PIPING TO BE HEAT TRACED PER SPECIFICATION SECTION 16055.

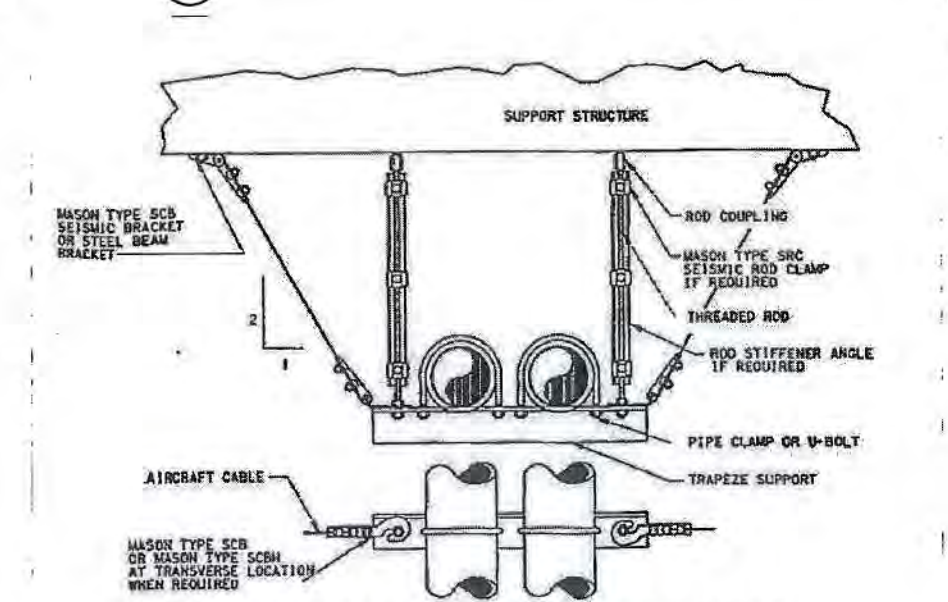


**3 PS IWW-2 ONE SPOT SHOP MANHOLE DISCHARGE PIPING MANIFOLD DETAIL**  
NTS

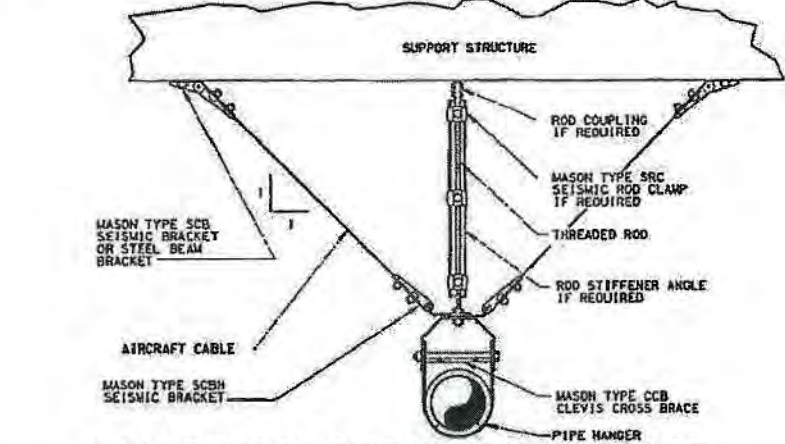
**1 ONE SPOT SHOP ELEVATED PIPE SUPPORT DETAIL**  
NTS



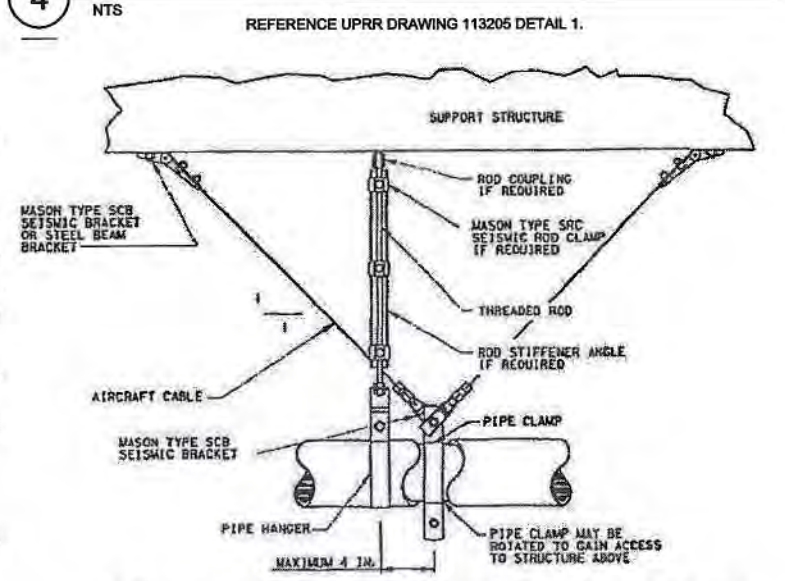
**2 PIPE PENETRATION (EXTERIOR WALL)**  
NTS



**6 TRANSVERSE SEISMIC CABLE BRACE FOR TRAPEZE SUPPORTED PIPE / CONDUIT**  
NTS



**4 TRANSVERSE SEISMIC CABLE BRACE FOR CLEVIS SUPPORTED PIPE / CONDUIT**  
NTS



**5 LONGITUDINAL SEISMIC CABLE BRACE FOR CLEVIS SUPPORTED PIPE / CONDUIT**  
NTS



NO.	DATE	DR	REVISION	BY

R. JOHANSSON  
 G. MALIN  
 O. SORENSON  
 A. FIRTH  
 APVD  
 CHK  
 DR

UNION PACIFIC RAILROAD  
 INDUSTRIAL WASTEWATER &  
 STORMWATER SEWER DESIGN  
 CHEYENNE, WYOMING

**CH2MHILL.**

STRUCTURAL  
 ONE SPOT SHOP  
 PIPE SUPPORT DETAIL

DATE	DECEMBER 2011
PROJ	413041
DWG	S-1
SHEET	42

VERIFY SCALE  
BAR IS ONE INCH ON ORIGINAL DRAWING.

REUSE OF DOCUMENTS: THIS DOCUMENT AND THE IDEAS AND DESIGN INCORPORATED HEREIN AS AN INSTRUMENT OF PROFESSIONAL SERVICE IS THE PROPERTY OF CH2M HILL AND IS NOT TO BE USED, IN WHOLE OR IN PART, FOR ANY OTHER PROJECT WITHOUT THE WRITTEN AUTHORIZATION OF CH2M HILL. © CH2M HILL 2008. ALL RIGHTS RESERVED.