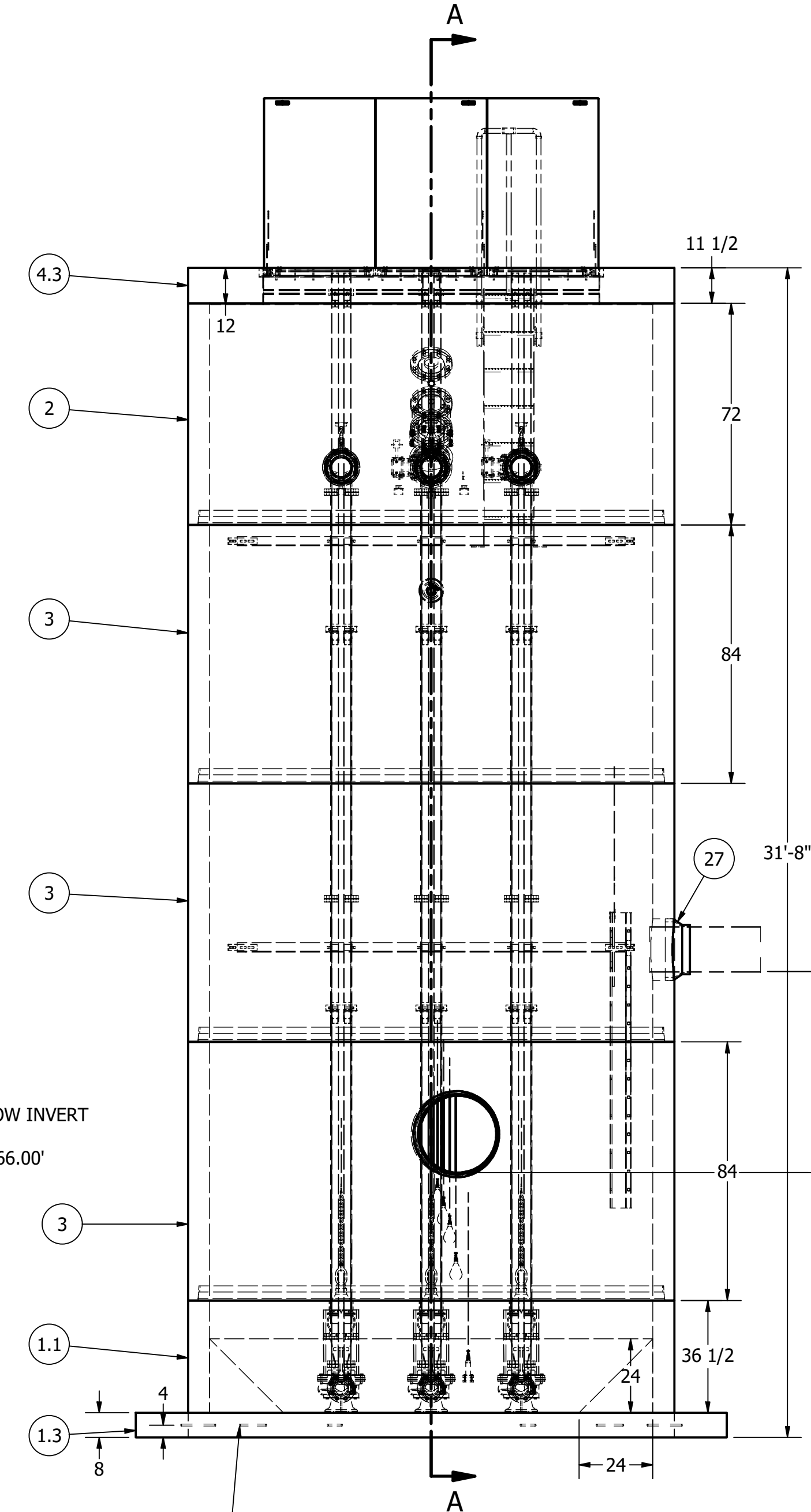
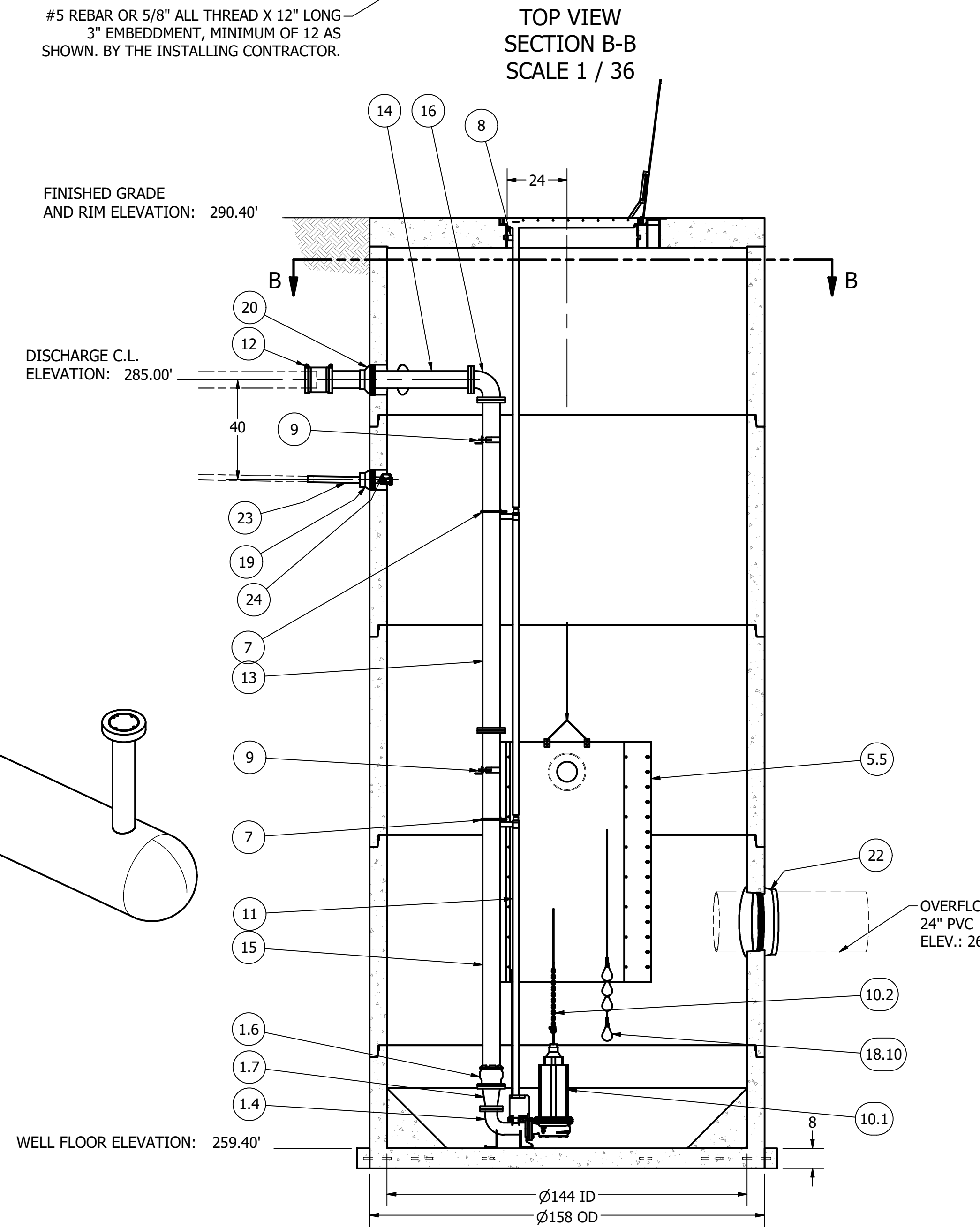


SENSOR AND ELEVATION TABLE		
LEVEL ELEVATION	DISTANCE BETWEEN POINTS	SET POINT DESCRIPTION
271.35'		INVERT IN
268.50'		BACK UP PUMPS START
	1.50'	SENSOR SPACING
267.00'		BACK UP PUMPS STOP
	0.50'	SENSOR SPACING
266.50'		BACK UP HL ALARM
265.63'		HIGH LEVEL ALARM
	0.50'	SENSOR SPACING
265.13		LAG PUMP START
	0.50'	SENSOR SPACING
264.63'		LEAD PUMP START
	1.30'	SENSOR SPACING
263.33		PUMP STOP
	3.93'	DISTANCE TO FLOOR
259.40'		FLOOR ELEVATION

PARTS LIST			
ITEM	QTY	STOCK NUMBER	DESCRIPTION
1	1	10-CB000000	BASE SLAB ASSEMBLY
1.1	1	10-CB1236AR	BASE - WW - 12ft DIA x 3ft TALL - ARMOROCK
1.2	1	10-GR12000000	SLOPE RING - 12ft DIA x 18in
1.3	1	10-GR999999	UPLIFT COLLAR - PORTLAND CEMENT
1.4	3	31-EL0400VA	DISCHARGE ELBOW - 4in
1.5	3	31-HW00AKS6	ANCHOR KIT - 316SS - DISCHARGE ELBOW
1.6	3	44-AD06RMAL	FLANGE ADAPTER - 6in - ALPHA
1.7	3	48-RD0604DC	REDUCER - DI - 6in x 4in - CONCENTRIC
1.8	3	49-GS040000	GASKET - FLANGE - 4in
2	1	12-CR1272AR	BARREL - 12ft DIA x 6ft H - ARMOROCK (FLAT TOP)
3	3	12-CR1284AR	BARREL - 12ft DIA x 7ft H - ARMOROCK
4	1	14-CT000000	TOP SLAB ASSEMBLY
4.1	1	13-HH10HDTU	HATCH - H20 - 10ft - TRIPLEX
4.2	1	13-VT0000AL	VENT - ALUMINUM - FLUSH
4.3	1	14-CT12HDTU	TOP SLAB - 12ft DIA - H20 - TRIPLEX - ARMOROCK
5	1	15-DP100000	DEFLECTOR PANEL ASSEMBLY - 12ft DIA x 8ft H
5.1	2	15-BR00SSGU	BRACKET - SS GUILLOTINE SET
5.2	1	15-DB00CAGU	GUILLOTINE CABLE ASSEMBLY - 22ft TOTAL LENGTH
5.3	1	50-AC00HDPE	HDPE - 24in X 24in X 1/2in - BLACK - cut from 4ft x 8ft
5.4	1	50-AC00HDPE	HDPE - 4ft X 8ft X 1-2in - BLACK
5.5	16 ft	50-AN100GS6	ANGLE - 316SS - 10ft - 11G FORMED
6	3	17-AC38000B	BOLT KIT - UPPER GUIDE BAR BRACKET
7	6	17-IG0254VA	BRACKET - 304SS - INTERMEDIATE GUIDE - 2in
8	3	17-UG0200VA	BRACKET - 304SS - UPPER GUIDE BAR - 2in
9	2	18-BR000000	BRACKET - 316SS - DISCHARGE PIPE SUPPORT
10	1	30-PU000000	PUMP SHIPPING CRATE
10.1	3	30-PU0000VA	PUMP - VAUGHAN - S4L - C - 15HP - 75ft CABLE
10.2	3	32-AC0000EB	LIFTING SLING ASSEMBLY - 316SS - 34ft
10.3	3	32-CGSS000F	CABLE SUPPORT GRIP - 304SS - 1.25in-1.49in
10.4	1	32-PL000000	LIFTING RING - PUMP
11	177 ft	40-PP0200S4	PIPE - 304SS SCH40 - 2in DIA (12 @ 10ft, 6 @ 9.5ft)
12	3	44-CP060AD0	COUPLING - 6in - ALPHA
13	3	45-FF061320	SPOOL - DI - 6in DIA x 132in - FLGxFLG
14	3	45-FP060600	SPOOL - DI - 6in DIA x 60in - FLGxPE
15	3	45-FP06139Q	SPOOL - DI - 6in DIA x 139.25in - FLGxPE
16	3	46-EL0690DI	ELBOW - DI - 6in x 90deg - FLGxFLG
17	9	49-GS060000	GASKET - FLANGE - 6in
18	1	50-AC000000	WELL SHIPPING CRATE
18.1	5	12-GS000001	BARREL - GASKET
18.2	1	13-KY000000	HATCH KEY
18.3	4	18-AC00CH00	CABLE HANGER ASSEMBLY - 316SS
18.4	4	18-HD040000	LIFTING CLUTCH - 4 TON
18.5	1	51-AC00NSTB	NEVER SIEZE - TUBE
18.6	217.5	51-SE0101SL	JOINT SEALANT - 1in - CONSEAL CS-202
18.7	207	51-TC060000	JOINT WRAP - 6in - TAPECOAT
18.8	1	80-BR00PT00	BRACKET - PRESSURE TRANSDUCER - 34ft
18.9	1	80-FI00PT00	DESSICANT FILTER - PRESSURE TRANSDUCER
18.10	4	80-FS30MSNL	FLOAT - 30m - MS1 - NOLTA
18.11	1	80-PT1599EH	PRESSURE TRANSDUCER - 0-15psi - 75ft CABLE - E&H
19	1	59-KB080400	KOR-N-SEAL - 8in CORE - 4in thru 1.5in PIPE
20	3	59-KB1206DI	KOR-N-SEAL - 12in CORE x 6in DIPS PIPE
22	1	59-KB282400	KOR-N-SEAL - 28in CORE x 24in PVC PIPE
23	2.5 ft	70-PP0200P4	PIPE - PVC SCH40 - 2in DIA
24	1	72-DB020SP8	DRAINBACK VALVE - PVC - 2in
27	1	59-KB2015P0	KOR-N-SEAL - 20in CORE x 15in PIPE

**NOTE: WET WELL TOP SLAB IS H-20 OCCASIONAL TRAFFIC RATED**



INVERT ELEVATION: 271.35'  
INFLUENT SEWER (BY OTHERS)  
15" PVC

OVERFLOW ELEVATION: 266.00'

**FOR PRODUCTION**

NOTE: ALL DIMENSIONS AND ELEVATIONS SHOWN ARE NOMINAL DIMENSIONS. IT IS THE RESPONSIBILITY OF THE ON-SITE CONTRACTOR OR ROMTEC UTILITIES CUSTOMER (NOT ROMTEC UTILITIES) TO VERIFY THE ACCURACY OF ANY CRITICAL DIMENSIONS OR ELEVATIONS PRIOR TO SETTING OR INSTALLING ANY EQUIPMENT.

ALL MATERIALS SHOWN ON THIS SHEET WILL BE SUPPLIED BY ROMTEC UTILITIES AND DELIVERED TO THE SITE AFTER THE HOLE HAS BEEN EXCAVATED AND SHORED. THE CONTRACTOR SHALL SUPPLY A CRANE OF SUFFICIENT SIZE TO LOWER ALL THE CONCRETE PIECES INTO THE HOLE SAFELY. THE CONTRACTOR SHALL INSTALL THE WET WELL (AND VALVE VAULT AND METERING VAULT IF APPLICABLE). ROMTEC UTILITIES WILL PROVIDE A REPRESENTATIVE FOR TECHNICAL ASSISTANCE ON THE DAY OF INSTALLATION TO ANSWER ANY QUESTIONS THAT MAY ARISE. THE CONTRACTOR IS RESPONSIBLE FOR ALL PLUMBING AND ELECTRICAL CONNECTIONS AND INSTALLATION. ITEMS NOTED AS "BY OTHERS" WILL BE PROVIDED AND INSTALLED BY THE CONTRACTOR. ROMTEC UTILITIES WILL NOT INSTALL ANY OF THE COMPONENTS SHOWN ON THIS PAGE.

© 2019 ROMTEC INC. ALL RIGHTS RESERVED. THESE PLANS AND DRAWINGS MAY NOT BE REPRODUCED, ADAPTED, OR FURTHER DISTRIBUTED, AND NO COMPONENTS MAY BE CONSTRUCTED FROM THESE PLANS, WITHOUT WRITTEN PERMISSION OF ROMTEC, INC.

REVISION HISTORY	
REV	DESCRIPTION
1	DATE: 4-17-18
2	DATE: 4-17-18
3	DATE: 6-19-18
4	DATE: 12-20-18
5	DATE: 4-8-19
6	DATE: 7-25-19
7	DATE: 6-10-20

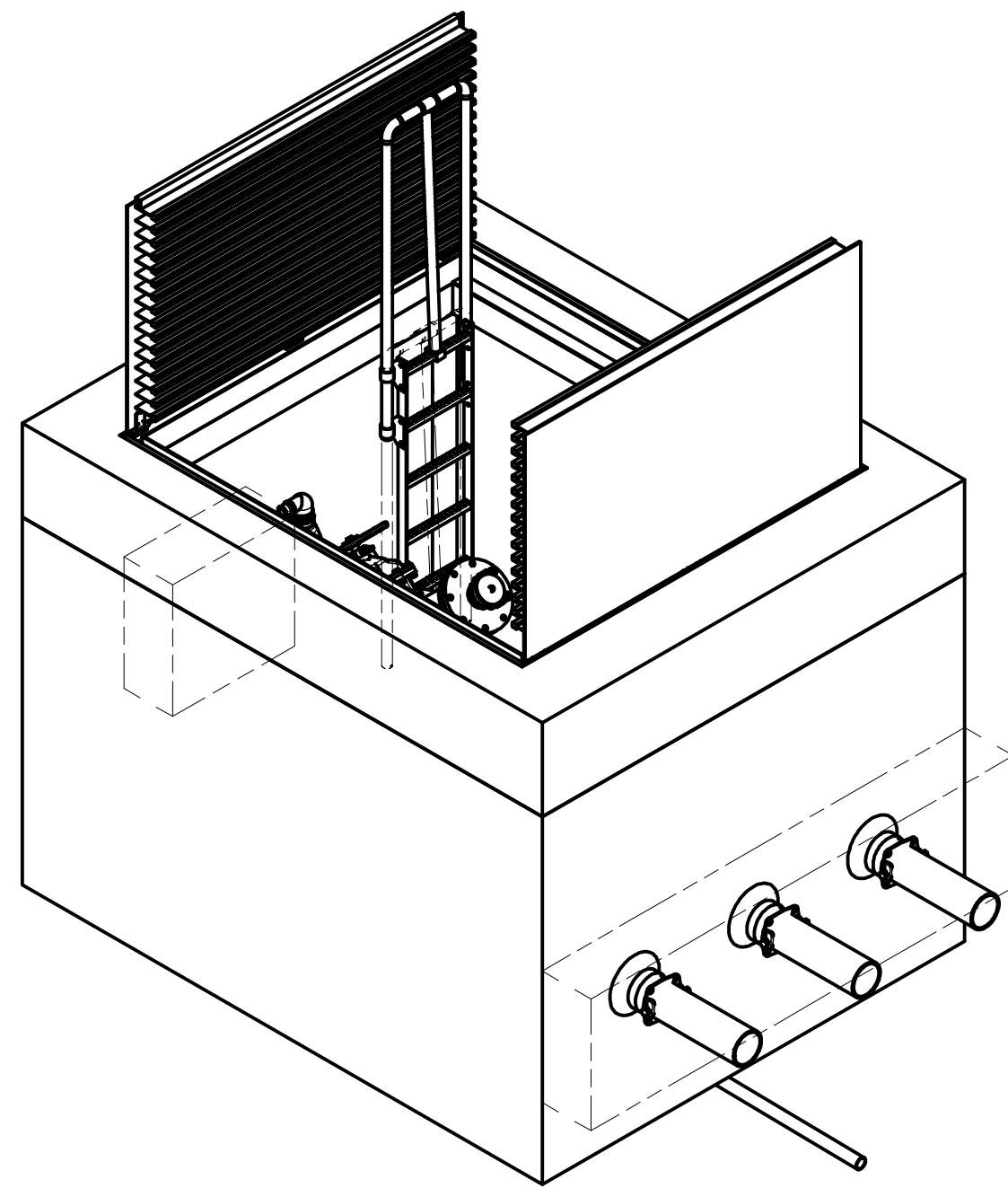
VERIFY SCALE	
SCALE	DATE
0	10-4-17

**COMPONENT DRAWING**

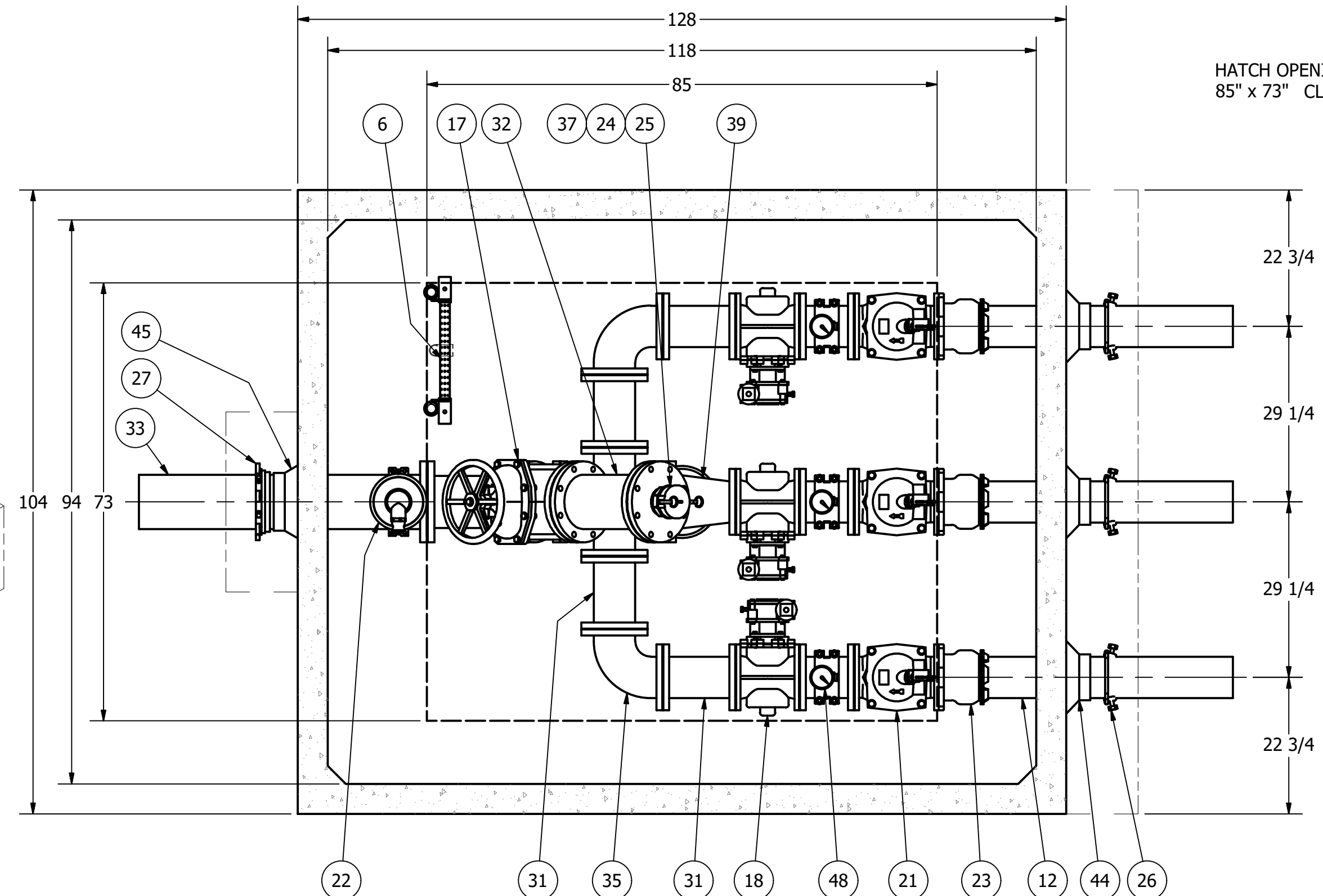
**ROMTEC UTILITIES**  
18240 NORTH BANK ROAD  
ROSEBURG, OREGON 97470  
(541) 496-9678  
FAX (541) 496-0804

**EAST AREA 1  
WET WELL ASSEMBLY**

SHEET  
**1 OF 4**  
JOB NUMBER  
**RMTC  
0000**

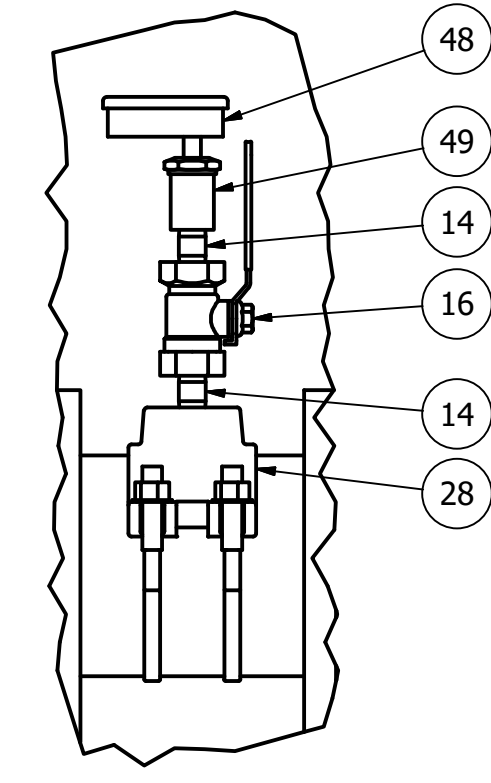


ISO VIEW  
SCALE 1 / 30

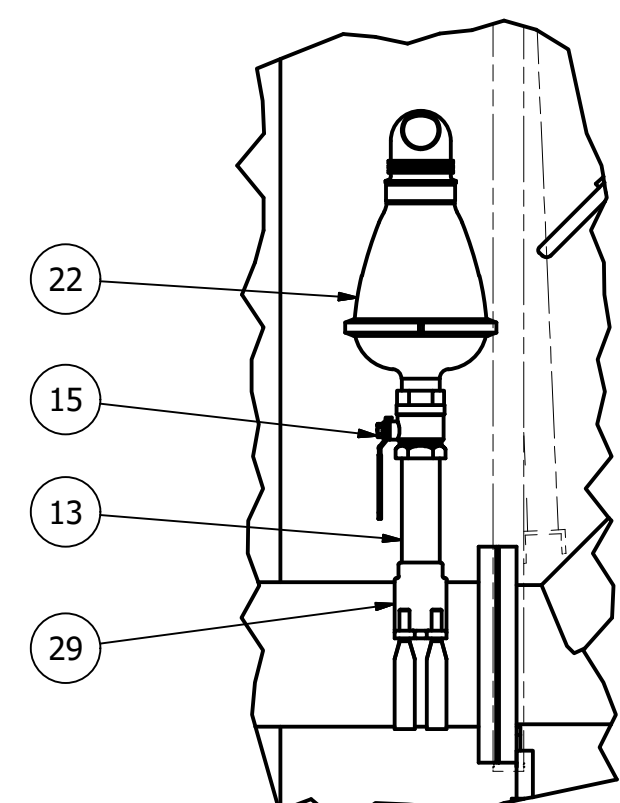


TOP VIEW  
SECTION D-D  
SCALE 1 / 18

HATCH OPENING  
85" x 73" CLEAR



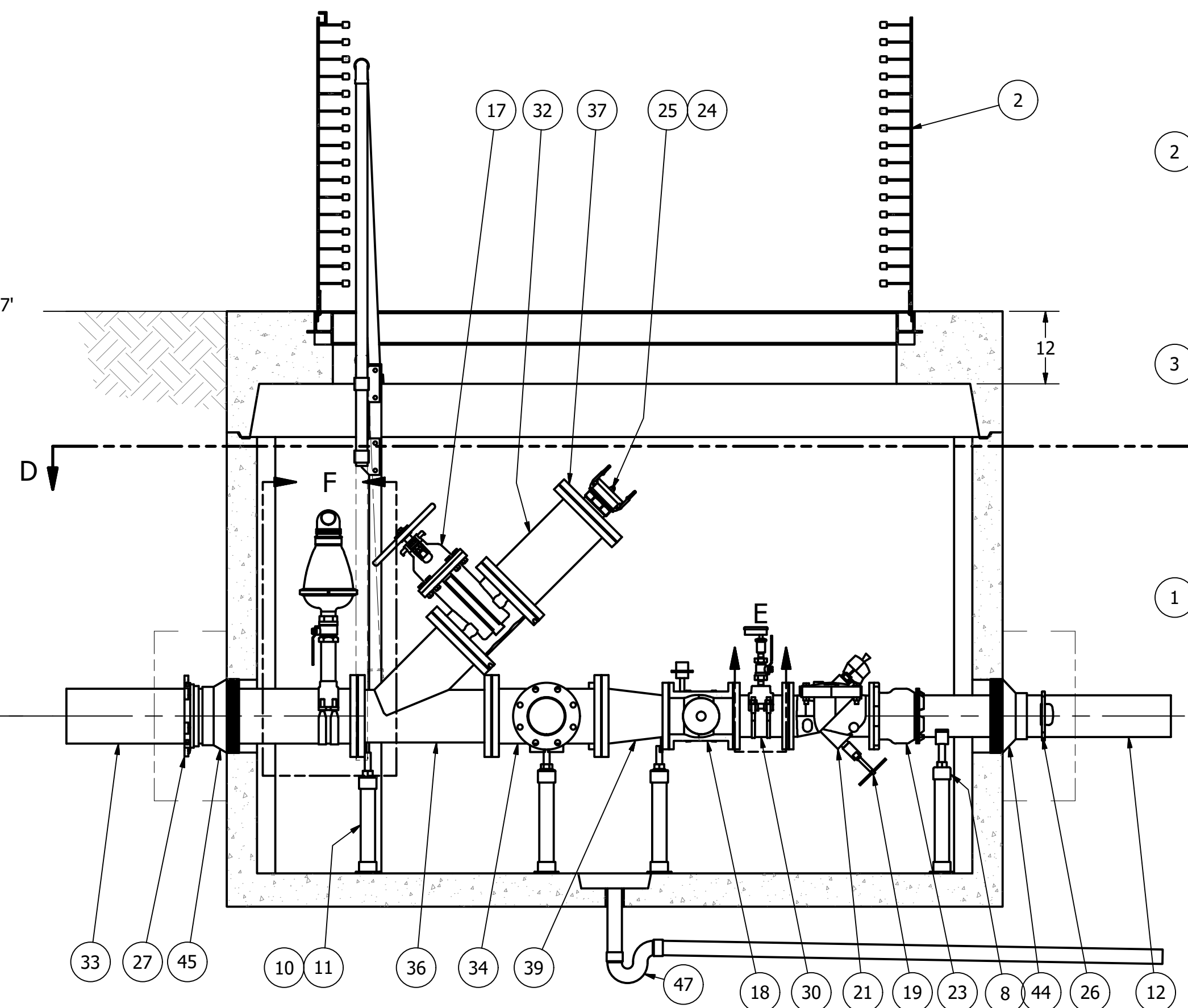
PRESSURE GAUGE  
DETAIL E  
SCALE 1 / 6



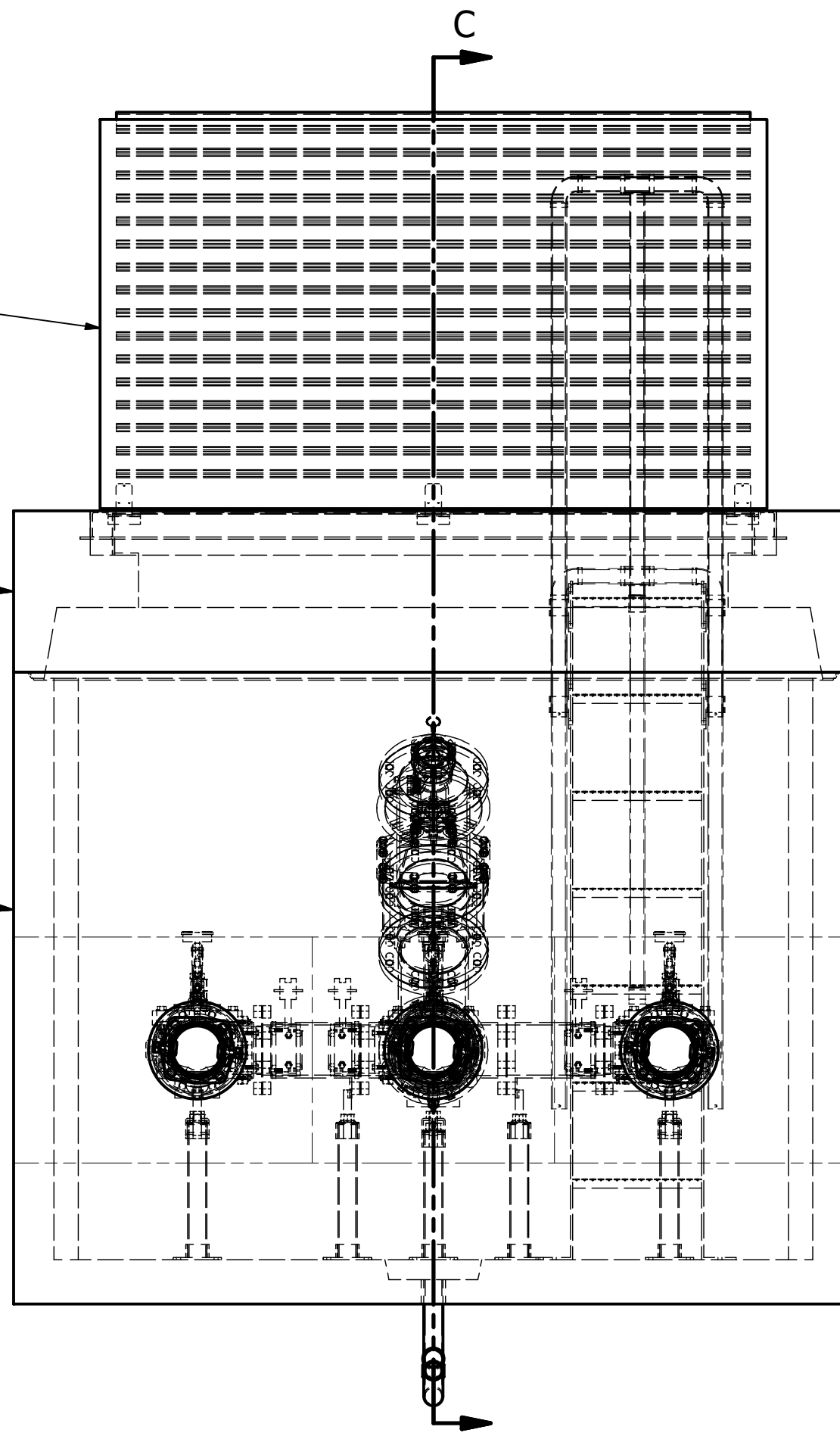
AIR RELEASE VALVE  
DETAIL F  
SCALE 1 / 12

FINISHED GRADE  
AND RIM ELEVATION: 290.57'

DISCHARGE C.L.  
ELEVATION: 285.00'



PROFILE VIEW  
SECTION C-C  
SCALE 1 / 18



INLET VIEW  
SCALE 1 / 18

PARTS LIST			
ITEM	QTY	STOCK NUMBER	DESCRIPTION
1	1	20-CB810200	BASE - VV - 810-2
2	1	23-HH8100HE	HATCH - VV - 810 - H20
3	1	24-CT810HD2	TOP SLAB - VV - 810-2 - H20
4	2	25-KY0000BR	BRACKET - VALVE KEY
5	1	25-KY0000GW	VALVE KEY - EXTENDABLE GATE WRENCH
6	1	25-LD070000	LADDER - ASSEMBLY - 7ft
7	4	25-PS06RUFL	PIPE STAND - 304SS - 6in FLANGE
8	3	25-PS06S92S	PIPE STAND - 304SS - 6in SADDLE
9	1	25-PS08RUFL	PIPE STAND - 304SS - 8in FLANGE
10	8	25-PS08BASE	PIPE STAND BASE - 304SS - 2in - 2 BOLT
11	10.7 ft	40-PP0200S4	PIPE - 304SS SCH40 - 2in DIA
12	12.0 ft	40-PP0600D0	PIPE - DI - 6in DIA (3 x 4ft)
13	1	40-TT0208S4	NIPPLE - 304SS - 2in DIA x 8in
14	6	40-TT0H02S4	NIPPLE - 304SS - 0.5in DIA x 2in
15	1	41-BV0200S6	BALL VALVE - 316SS - 2in
16	3	41-BV0H00S6	BALL VALVE - 316SS - 0.5in
17	1	41-GV080HD0	GATE VALVE - 8in - HANDWHEEL
18	3	41-PV060GD0	PLUG VALVE - 6in - GEARED OP NUT
19	1	42-AC0600BF	BACKFLOW ACTUATOR - 6in
20	3	42-MI060000	MECHANICAL INDICATOR - 6in
21	3	42-SF0600D0	CHECK VALVE - SWING FLEX - 6in
22	1	43-AV020AR1	VALVE - AIR VACUUM RELEASE - 2in - ARI
23	3	44-AD06RMAL	FLANGE ADAPTER - 6in - ALPHA
24	1	44-CL0404DM	CAM LOCK - ALUM - 4in - PLUGxMNPT
25	1	44-CL04ACAP	CAM LOCK - ALUM - 4in - SOCKET CAP
26	3	44-RG060STR	HEAVY DUTY RETAINER GLAND - 6in
27	1	44-RG080STR	HEAVY DUTY RETAINER GLAND - 8in
28	3	44-TS060H00	TAPPING SADDLE - 6in x .5in NPT
29	1	44-TS080200	TAPPING SADDLE - 8in x 2in NPT
30	3	45-FF060090	SPOOL - DI - 6in DIA x 9in - FLGxFLG
31	4	45-FF060120	SPOOL - DI - 6in DIA x 12in - FLGxFLG
32	1	45-FF080180	SPOOL - DI - 8in DIA x 18in - FLGxFLG
33	1	45-FF080480	SPOOL - DI - 8in DIA x 48in - FLGxPE
34	1	46-CX0806DI	CROSS - DI - 8in x 6in - FLGxFLG
35	2	46-EL0690DI	ELBOW - DI - 6in x 90deg - FLGxFLG
36	1	46-YL0808DI	WYE - DI - 8in - 45deg - FLGxFLG
37	1	48-FL0802D0	FLANGE - DI - 8in - BLIND - 4in TAP
38	3	48-PL0Q00HX	PLUG - 304SS - .25in NPT - HEX SOCKET
39	1	48-RD0806DC	REDUCER - DI - 8in x 6in - CONCENTRIC
40	15	49-GS060000	GASKET - FLANGE - 6in
41	6	49-GS080000	GASKET - FLANGE - 8in
42	43.5 ft	51-SE0101SL	JOINT SEALANT - 1in x 1in - CS-202
43	39 ft	51-TC060000	JOINT WRAP - 6in - TAPECOAT
44	3	59-KB1206DI	KOR-N-SEAL - 12in CORE x 6in DIPS PIPE
45	1	59-KB1208DI	KOR-N-SEAL - 12in CORE x 8in DIPS PIPE
46	8.0 ft	70-PP0200P4	PIPE - PVC SCH40 - 2in DIA
47	1	76-EL02PT40	ELBOW - PVC DWV - 2in - P-TRAP
48	3	81-PG3H00QB	PRESSURE GAUGE - 3.5in DIA x .25in MNPT BACK - 100#
49	3	83-GI0HF0QF	DIAPHRAGM SEAL - 0.5in FNPT x 0.25in FNPT

VERIFY SCALE  
BASE IS ONE INCH ON  
ORIGINAL DRAWING  
IF NOT ONE INCH ON  
SCALE, ACCORDINGLY

DSN - KEVIN BOGAN  
DRN - KEVIN BOGAN  
CKD -  
DATE - 10-4-17

**ROMTEC UTILITIES**  
18240 NORTH BANK ROAD  
ROSEBURG, OREGON 97470  
(541) 496-9678  
FAX (541) 496-0804

EAST AREA 1  
VALVE VAULT ASSEMBLY

SHEET  
2 OF 4  
JOB NUMBER  
RMTC  
0000

ALL MATERIALS SHOWN ON THIS SHEET WILL BE SUPPLIED BY ROMTEC UTILITIES AND DELIVERED TO THE SITE AFTER THE HOLE HAS BEEN EXCAVATED AND SHORED. THE CONTRACTOR SHALL SUPPLY A CRANE OF SUFFICIENT SIZE TO LOWER ALL THE CONCRETE PIECES INTO THE HOLE SAFELY. THE CONTRACTOR SHALL INSTALL THE WET WELL (AND VALVE VAULT AND METERING VAULT IF APPLICABLE). ROMTEC UTILITIES WILL PROVIDE A REPRESENTATIVE FOR TECHNICAL ASSISTANCE ON THE DAY OF INSTALLATION TO ANSWER ANY QUESTIONS THAT MAY ARISE. THE CONTRACTOR IS RESPONSIBLE FOR ALL PLUMBING AND ELECTRICAL CONNECTIONS AND INSTALLATION. ITEMS NOTED AS "BY OTHERS" WILL BE PROVIDED AND INSTALLED BY THE CONTRACTOR. ROMTEC UTILITIES WILL NOT INSTALL ANY OF THE COMPONENTS SHOWN ON THIS PAGE.

© 2019 ROMTEC INC. ALL RIGHTS RESERVED. THESE PLANS AND DRAWINGS MAY NOT BE REPRODUCED, ADAPTED, OR FURTHER DISTRIBUTED, AND NO COMPONENTS MAY BE CONSTRUCTED FROM THESE PLANS, WITHOUT WRITTEN PERMISSION OF ROMTEC, INC.

NOTE: ALL DIMENSIONS AND ELEVATIONS SHOWN ARE NOMINAL DIMENSIONS. IT IS THE RESPONSIBILITY OF THE ON-SITE CONTRACTOR OR ROMTEC UTILITIES CUSTOMER (NOT ROMTEC UTILITIES) TO VERIFY THE ACCURACY OF ANY CRITICAL DIMENSIONS OR ELEVATIONS PRIOR TO SETTING OR INSTALLING ANY EQUIPMENT.

REV	DESCRIPTION	DATE	APPROV
2	UPDATED FOR PRODUCTION LAUNCH	4/8/2019	AD
1	FG ELEVATION, PIGGING PORT	4-3-18	KB
			REV

REVISION HISTORY