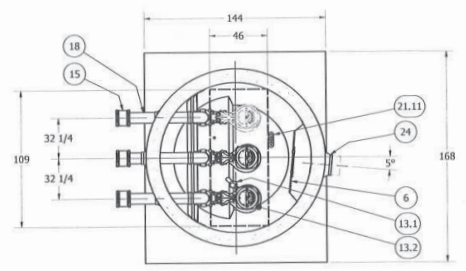


**10" DIAMETER WET WELL  
8" DISCHARGE PIPING  
DUPLX FLYGT NP3153HT PUMPS  
8" VALVE VAULT, 10" METER VAULT  
FOR DESIGN REVIEW**

NOTE:  
CONDUIT TO CONTROL PANEL (BY OTHERS)  
MINIMUM:  
(3) FOR POWER  
(1) FOR LEVEL SENSING

ALL MATERIALS SHOWN ON THIS SHEET WILL BE SUPPLIED BY ROMTEC UTILITIES AND DELIVERED TO THE SITE AFTER THE HOLE HAS BEEN EXCAVATED AND SHORED. THE CONTRACTOR SHALL SUPPLY A CRANE OF SUFFICIENT SIZE TO LOWER ALL THE CONCRETE PIECES INTO THE HOLE SAFELY. THE CONTRACTOR SHALL INSTALL THE WET WELL (AND VALVE VAULT AND METERING VAULT IF APPLICABLE). ROMTEC UTILITIES WILL PROVIDE A REPRESENTATIVE FOR TECHNICAL ASSISTANCE ON THE DAY OF INSTALLATION TO ANSWER ANY QUESTIONS THAT MAY ARISE. THE CONTRACTOR IS RESPONSIBLE FOR ALL PLUMBING AND ELECTRICAL CONNECTIONS AND INSTALLATION. ITEMS NOTED AS "BY OTHERS" WILL BE PROVIDED AND INSTALLED BY THE CONTRACTOR. ROMTEC UTILITIES WILL NOT INSTALL ANY OF THE COMPONENTS SHOWN ON THIS PAGE.

© 2018 ROMTEC INC. ALL RIGHTS RESERVED. THESE PLANS AND DRAWINGS MAY NOT BE REPRODUCED, ADAPTED, OR FURTHER DISTRIBUTED, AND NO COMPONENTS MAY BE CONSTRUCTED FROM THESE PLANS, WITHOUT WRITTEN PERMISSION OF ROMTEC, INC.



SECTION B-B  
SCALE 1 / 48

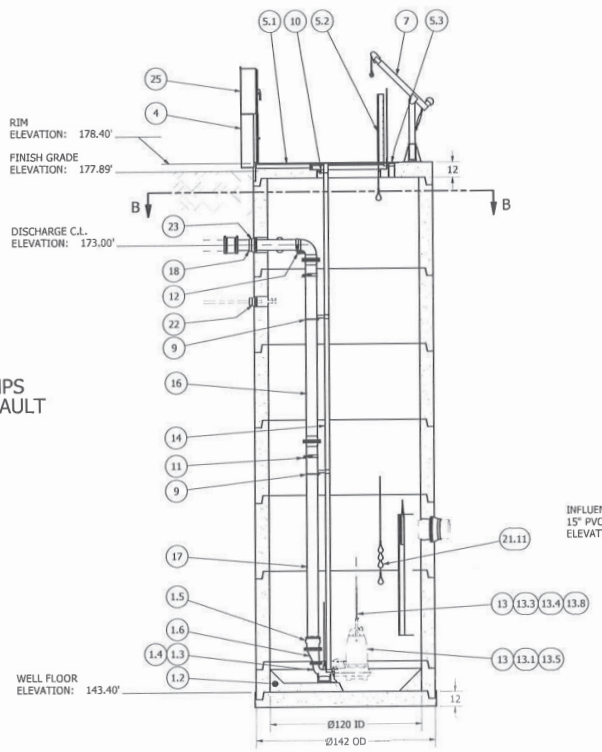
INITIAL PHASE w/ DUPLX FLYGT NP3153HT PUMPS

PRIMARY SENSOR ELEVATION TABLE		
DESCRIPTION	ELEVATION	Δ
INFLUENT INVERT	153.50'	4.40'
HIGH LEVEL ALARM	149.10'	0.50'
LAG PUMP START	148.60'	0.50'
LEAD PUMP START	148.10'	1.70'
PUMP STOP	146.40'	1.70'
WELL FLOOR	143.40'	3.00'

NOTE: FOR INTERIM TRIPLEX PHASE, HIGH LEVEL ALARM WILL DOUBLE AS LAG-LAG START.

MISC. ELEVATION TABLE		
DESCRIPTION	ELEVATION	
FLOAT HIGH HIGH ALARM	176.40'	
FLOAT HIGH ALARM	149.30'	
FLOAT LAG START	150.30'	
FLOAT LEAD START	149.80'	
FLOAT PUMP STOP	145.90'	
P.T. LOW LEVEL ALARM	145.90'	

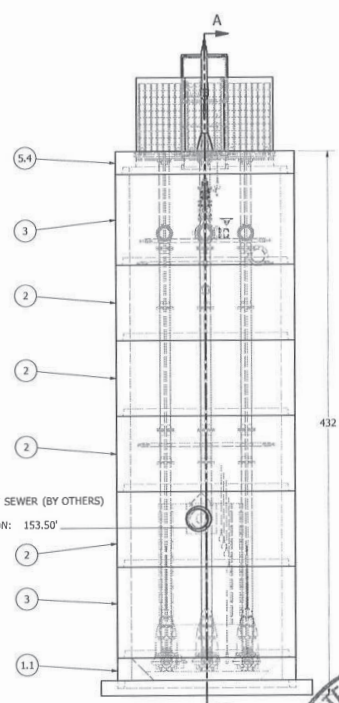
NOTE: TOP SLAB AND HATCH ARE PEDESTRIAN RATED



SECTION A-A  
SCALE 1 / 48

INITIAL PHASE: 424 GPM INFLUENT  
- DUPLX FLYGT NP3153HT 12HP PUMPS  
- 652 GPM @ 47 TDH

FULL BUILDOUT: 1722 GPM INFLUENT  
- TRIPLEX FLYGT NP3202HT 45HP PUMPS  
- 858 GPM @ 115 TDH (1716 GPM w/ 2 PUMPS)



FRONT VIEW  
SCALE 1 / 48

PARTS LIST			
ITEM	QTY	STOCK NUMBER	DESCRIPTION
1	1	10-CB000000	BASE SLAB ASSEMBLY
1.1	1	10-CB102400	BASE - MM - 10FT DIA X 24IN
1.2	1	10-GR999999	GROUT SHELF - CUSTOM
1.3	3	31-EL0400FL	DISCHARGE ELBOW - 4IN - FLYGT
1.4	3	31-HA00AK56	ANCHOR KIT - 316SS - DISCHARGE ELBOW
1.5	3	44-AD08PMAL	FLANGE ADAPTER - 8IN - ALPHA
1.6	3	48-R088840E	REDUCER - DI = 8IN X 4IN - ECCENTRIC
1.7	1	49-G5840000	GASKET - FLANGE - 4IN
2	4	12-CR10E000	BARREL - 10FT DIA X 5FT H
3	2	12-CR107200	BARREL - 10FT DIA X 6FT H
4	1	13-DS3636SS	DISCONNECT STAND - SS - 36IN X 36IN X 12IN
5	1	14-C1000000	TOP SLAB ASSEMBLY
5.1	1	14-CAL00000	CABLE TRAY - 10FT TOP SLAB
5.2	1	13-HH00PDE	HATCH - PED - 10FT - TRIPLEX
5.3	1	13-VT0000AL	VENT - ALUMINUM - FLUSH
5.4	1	14-CT1000T0	TOP SLAB - 10FT DIA - PED - TRIPLEX
5.5	1	14-HH00PC00P	CRANE BASE - SBP20 - 2000lb - PC
6	1	15-DP100000	DEFLECTOR PANEL ASSEMBLY - 10FT
7	1	16-CP2PC0E2	CRANE - SPT20-E2 - 2000lb - PC
8	3	17-AC380000	BOLT KIT - UPPER GUIDE BAR BRACKET
9	6	17-IG0356FL	BRACKET - 316SS - INTERMEDIATE GUIDE - 2IN
10	3	17-U00300FL	BRACKET - 316SS - UPPER GUIDE BAR - 3IN
11	2	18-BR000000	BRACKET - 316SS - DISCHARGE PIPE - TRIPLEX
12	1	18-BR000001	BRACKET - 316SS - DISCHARGE PIPE - HORIZ.
13	1	30-PU000000	PUMP SHIPPING CRATE
13.1	1	30-PU0000FL	PUMP - FLYGT NP3153HT 12HP
13.2	2	32-B500H055	BOW SHACKLE - 316SS - 1-2IN
13.3	2	32-B500H055	BOW SHACKLE - 316SS - 3-8IN
13.4	2	32-B500H055	BOW SHACKLE - 316SS - 3-8IN
13.5	2	32-C6C00055	CORD GRIP - 1.25IN - 1.49IN - SS
13.6	4.0	32-PI932056	CHAIN - 316SS - 9-32IN 65
13.7	1	32-PLGE0000	GRIP EYE UNIT
13.8	2	32-PLLSANYL	LIFTING SLING ASSEMBLY - COATED CABLE
14	198.0	40-PP030054	PIPE - 304SS SCH40 - 3IN DIA (GUIDE RAILS)
15	3	44-CR000000	COUPLING - 8IN - ROMAC ALPHA
16	3	45-FP081445	SPOOL - 304SS SCH40 - 8IN x 12FT - FLGxFLG
17	3	45-FP081545	SPOOL - 304SS SCH40 - 8IN x 15.4IN - FLGxPE
18	3	46-EL060939	ELBOW - 304SS SCH40 - 6IN x 90deg - CUSTOM
19	1	48-FL060854	FLANGE - 304SS - 6IN - BLIND
20	6	49-G5080000	GASKET - FLANGE - 8IN
21	1	50-AC000000	WELL SHIPPING CRATE
21.1	8	12-G5000001	BARREL - GASKET
21.2	1	13-KY000000	HATCH KEY
21.3	1	16-WR100000	WIRE ROPE - SS - 1/4IN x 60FT
21.4	4	18-AC000000	CABLE HANGER ASSEMBLY
21.5	4	18-HD040000	LIFTING CLUTCH - 4 TON
21.6	4	18-HD080000	LIFTING CLUTCH - 8 TON
21.7	1	51-AC08NSTB	NEVER SIEZE - TUBE
21.8	261	51-SE0101SL	JOINT SEALANT - 1IN - CONSEAL CS-202
21.9	261	51-TC060000	JOINT WRAP - 6IN - TAPECOAT
21.10	1	62-C000PT00	CORD GRIP - CABLE - WEDGE CLAMP
21.11	5	80-F520MSNL	FLOAT = 20m - MS1 - NOLTA
21.12	1	80-PT1500EH	PRESSURE TRANSDUCER - 0-15PSI - 60FT CABLE
22	1	59-KB080400	KOR-N-SEAL - 8IN CORE - 4IN THRU 1.5IN PIPE
23	3	59-KB120801	KOR-N-SEAL - 12IN CORE x 8IN DIPS PIPE
24	1	59-KB201400	KOR-N-SEAL - 20IN CORE x 34IN PIPE
25	1	61-EP50360C	PNL DISCONNECT 31-50FLA (36x36)

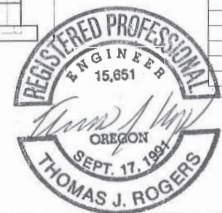
FINAL BUILDOUT w/ TRIPLEX FLYGT NP3202HT PUMPS

PRIMARY SENSOR ELEVATION TABLE		
DESCRIPTION	ELEVATION	Δ
INFLUENT INVERT	153.50'	
HIGH LEVEL ALARM	152.30'	0.20'
LAG PUMP START	152.10'	1.00'
LEAD PUMP START	151.10'	3.00'
PUMP STOP	147.90'	4.50'
WELL FLOOR	143.40'	

MISC. ELEVATION TABLE		
DESCRIPTION	ELEVATION	
FLOAT HIGH HIGH ALARM	176.40'	
FLOAT HIGH ALARM	153.50'	
FLOAT LAG START	153.00'	
FLOAT LEAD START	152.50'	
FLOAT PUMP STOP	147.40'	
P.T. LOW LEVEL ALARM	147.40'	

NOTE: CONTRACTOR TO SEAL ALL CONCRETE JOINTS AND PIPE PENETRATIONS WITH NON-SHRINK GROUT

NOTE: ALL DIMENSIONS AND ELEVATIONS SHOWN ARE NOMINAL DIMENSIONS. IT IS THE RESPONSIBILITY OF THE ON-SITE CONTRACTOR OR ROMTEC UTILITIES CUSTOMER (NOT ROMTEC UTILITIES) TO VERIFY THE ACCURACY OF ANY CRITICAL DIMENSIONS OR ELEVATIONS PRIOR TO SETTING OR INSTALLING ANY EQUIPMENT.

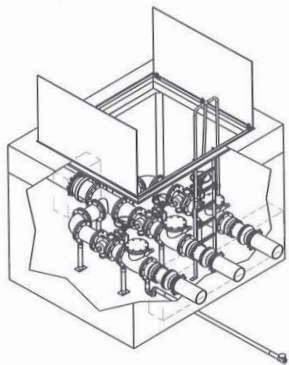


DATE	DESCRIPTION	BY
8/6/2018	ELECTRIC WIRE OPTION, REVISED INTERIM PHASE	JB
8/21/2018	REVISED FLOWS, INITIAL/INTERIM PUMP SIZE	JB
7/13/2018	INCREASED FLOW RATE, LARGER PUMPS & WELLS, INFLUENT ELEV	JB
6/27/2018	ELEVATIONS, DISCHARGE, NEW POND	JB
	DESCRIPTION	BY

VERIFY SCALE  
0 1'

ROMTEC UTILITIES  
18240 NORTH BANK ROAD  
ROSEBURG, OREGON 97070  
PH: 503-825-8222  
WWW.ROMTECUTILITIES.COM

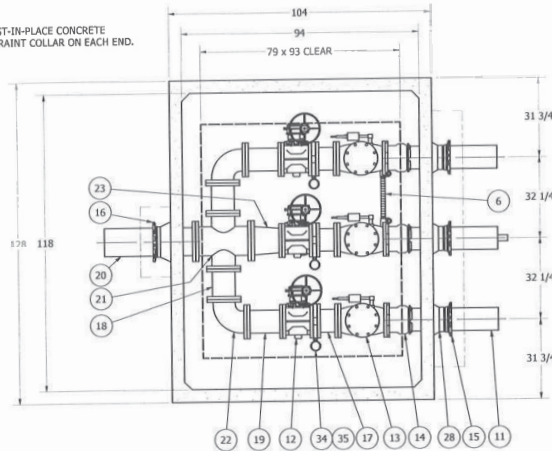
BOONE'S CROSSING  
WOODBURN, OR  
WET WELL ASSEMBLY  
COMPONENT DRAWING



ISO VIEW  
SCALE 1 / 36

**810 VALVE VAULT  
8" PIPING AND VALVES  
W/ 10" OUTLET**

12" THICK CAST-IN-PLACE CONCRETE  
THRUST RESTRAINT COLLAR ON EACH END.  
(BY OTHERS)

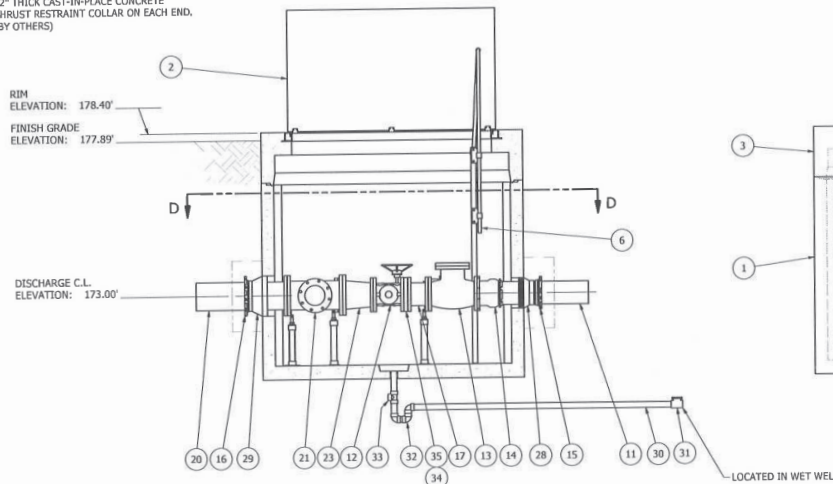


SECTION D-D  
SCALE 1 / 24

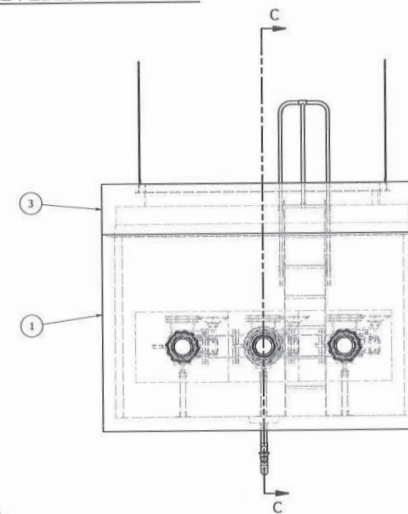
**NOTE: TOP SLAB AND HATCH ARE PEDESTRIAN RATED**

NOTE: TOP SLAB HAS A SIDE-EXITING HATCH DRAIN.  
CONTRACTOR TO PLUMB THE DRAIN TO AN OUTFALL AREA.

12" THICK CAST-IN-PLACE CONCRETE  
THRUST RESTRAINT COLLAR ON EACH END.  
(BY OTHERS)



SECTION C-C  
SCALE 1 / 24



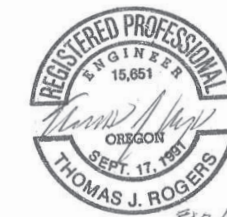
LOCATED IN WET WELL

		PARTS LIST	
ITEM	QTY	STOCK NUMBER	DESCRIPTION
1	1	20-CB816200	BASE - W - 810
2	1	23-HH8100PE	HATCH - W - 810 - PEDESTRIAN
3	1	24-CT810PD0	TOP SLAB - W - 810 - PED
4	1	25-KV0000BR	BRACKET - VALVE KEY
5	1	25-KV0000GW	VALVE KEY - EXTENDABLE GATE WRENCH
6	1	25-LD070200	LADDER - ASSEMBLY - 7ft-21in
7	5	25-PS08RUFJL	PIPE STAND - 30455 - 81n FLANGE
8	6	25-PS08BASE	PIPE STAND BASE - 30455 - 21n - 2 BOLT
9	3	25-PS10RUFJL	PIPE STAND - 30455 - 101n FLANGE
10	8.4 ft	40-PP020054	PIPE - 30455 SCH40 - 21n DIA. (PIPE STANDS)
11	10.5 ft	40-PP0800D0	PIPE - DI - 81n DIA (3 x 3.5ft)
12	3	41-PV0800HD0	PLUG VALVE - 81n - GEARED HANDWHEEL
13	3	42-LM0800D0	CHECK VALVE - LEVER & WEIGHT - 81n
14	3	44-AD08RVAL	FLANGE ADAPTER - 81n - ALPHA
15	3	44-RG0808TR	RETAINER GLAND - 81n - HEAVY DUTY
16	1	44-RG1008TR	RETAINER GLAND - 101n
17	3	45-FF080120	SPOOL - DI - 81n DIA x 61n - FLGxFLG
18	2	45-FF080120	SPOOL - DI - 81n DIA x 121n - FLGxFLG
19	2	45-FF080140	SPOOL - DI - 81n DIA x 141n - FLGxFLG
20	1	45-FF100360	SPOOL - DI - 101n DIA x 361n - FLGxPE
21	1	46-CX1008DI	CROSS - DI - 101n x 81n - FLGxFLG
22	2	46-EL0890DI	ELBOW - DI - 81n x 90deg - FLGxFLG
23	1	48-RD1008DC	REDUCER - DI - 101n x 81n - CONCENTRIC. 1pt
24	18	49-GS100000	GASKET - FLANGE - 81n
25	2	49-GS100000	GASKET - FLANGE - 101n
26	43.5 ft	51-SE0101SL	JOINT SEALANT - 11n - CONSEAL CS-202
27	39 ft	51-TC060000	JOINT WRAP - 61n - TAPECOAT
28	3	59-KB1200DI	KOR-N-SEAL - 121n CORE x 81n DIPS PIPE
29	1	59-KB161000	KOR-N-SEAL - 161n CORE x 101n PIPE
30	17.9 ft	70-PP0200P4	PIPE - PVC SCH40 - 21n DIA
31	1	72-DB0205PB	DRAINBACK VALVE - PVC - 21n
32	3	76-EL0200A0	ELBOW - PVC SCH40 - 21n x 90deg - SLIP
33	1	76-TE0202A0	TEE - PVC SCH40 - 21n - SLIP
34	3	81-PG3H100L	PRESSURE GAUGE - 3.51n x 100psi
35	3	83-GI080000	ISO RING - 81n
36	3	84-PX0000TR	PROXY SWITCH - TURCK
37	3	84-PX0000CTR	PROXY SWITCH - CONNECTING CABLE - TURCK

**FOR DESIGN REVIEW**

ALL MATERIALS SHOWN ON THIS SHEET WILL BE SUPPLIED BY ROMTEC UTILITIES AND DELIVERED TO THE SITE AFTER THE HOLE HAS BEEN EXCAVATED AND SHORED. THE CONTRACTOR SHALL SUPPLY A CRANE OF SUFFICIENT SIZE TO LOWER ALL THE CONCRETE PIECES INTO THE HOLE SAFELY. THE CONTRACTOR SHALL INSTALL THE WET WELL (AND VALVE VAULT AND METERING VAULT IF APPLICABLE). ROMTEC UTILITIES WILL PROVIDE A REPRESENTATIVE FOR TECHNICAL ASSISTANCE ON THE DAY OF INSTALLATION TO ANSWER ANY QUESTIONS THAT MAY ARISE. THE CONTRACTOR IS RESPONSIBLE FOR ALL PLUMBING AND ELECTRICAL CONNECTIONS AND INSTALLATION. ITEMS NOTED AS "BY OTHERS" WILL BE PROVIDED AND INSTALLED BY THE CONTRACTOR. ROMTEC UTILITIES WILL NOT INSTALL ANY OF THE COMPONENTS SHOWN ON THIS PAGE.

© 2018 ROMTEC INC. ALL RIGHTS RESERVED. THESE PLANS AND DRAWINGS MAY NOT BE REPRODUCED, ADAPTED, OR FURTHER DISTRIBUTED, AND NO COMPONENTS MAY BE CONSTRUCTED FROM THESE PLANS, WITHOUT WRITTEN PERMISSION OF ROMTEC, INC.



NOTE: THE VALVE VAULT HAS BEEN SIZED FOR THE FUTURE FULL BUILDOUT FLOW OF 1722 GPM IN A TRIPLEX CONFIGURATION.

NOTE: CONTRACTOR TO SEAL ALL CONCRETE JOINTS AND PIPE PENETRATIONS WITH NON-SHRINK GROUT

NOTE: ALL DIMENSIONS AND ELEVATIONS SHOWN ARE NOMINAL DIMENSIONS. IT IS THE RESPONSIBILITY OF THE ON-SITE CONTRACTOR OR ROMTEC UTILITIES CUSTOMER (NOT ROMTEC UTILITIES) TO VERIFY THE ACCURACY OF ANY CRITICAL DIMENSIONS OR ELEVATIONS PRIOR TO SETTING OR INSTALLING ANY EQUIPMENT.

NO.	DATE	DESCRIPTION	BY
1	9/6/2018	REMOVED INCORRECT PHASE NOTE	AS
2	7/13/2018	STRAIGHT & TYPED FOR CONSTRUCTION	AS
3	7/13/2018	ELEVATION CORRECTION	AS
4			
5			
6			
7			
8			
9			
10			
11			
12			
13			
14			
15			
16			
17			
18			
19			
20			
21			
22			
23			
24			
25			
26			
27			
28			
29			
30			
31			
32			
33			
34			
35			
36			
37			

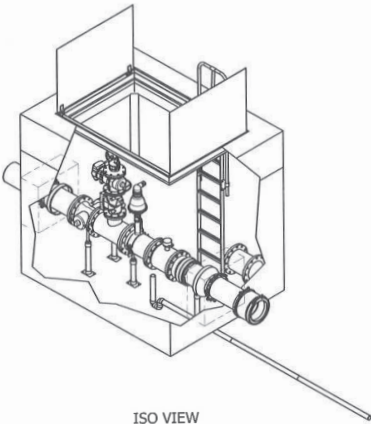
VERIFY SCALE

NO.	DATE	DESCRIPTION	BY
1	9/6/2018	REMOVED INCORRECT PHASE NOTE	AS
2	7/13/2018	STRAIGHT & TYPED FOR CONSTRUCTION	AS
3	7/13/2018	ELEVATION CORRECTION	AS
4			
5			
6			
7			
8			
9			
10			
11			
12			
13			
14			
15			
16			
17			
18			
19			
20			
21			
22			
23			
24			
25			
26			
27			
28			
29			
30			
31			
32			
33			
34			
35			
36			
37			

**ROMTEC UTILITIES**  
18240 NORTH BANK ROAD  
ROSEBURG, OREGON 97470  
PH: 503-325-1100  
FAX: 503-325-1101  
WWW.ROMTECUTILITIES.COM

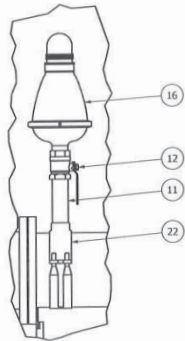
**BOONE'S CROSSING**  
WOODBURN, OR  
**VALVE VAULT ASSEMBLY**  
**COMPONENT DRAWING**

MECHANICAL SHEET  
2 OF 4



ISO VIEW  
SCALE 1 / 30

**687 VALVE VAULT  
10" PIPING AND VALVES  
W/ PUMPING PORT & ARV  
FOR DESIGN REVIEW**

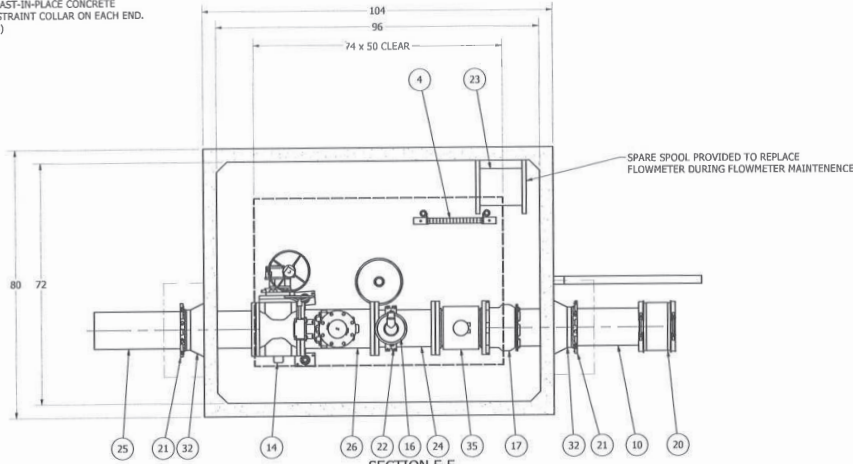


DETAIL H  
SCALE 1 / 9

ALL MATERIALS SHOWN ON THIS SHEET WILL BE SUPPLIED BY ROMTEC UTILITIES AND DELIVERED TO THE SITE AFTER THE HOLE HAS BEEN EXCAVATED AND SHORED. THE CONTRACTOR SHALL SUPPLY A CRANE OF SUFFICIENT SIZE TO LOWER ALL THE CONCRETE PIECES INTO THE HOLE SAFELY. THE CONTRACTOR SHALL INSTALL THE WET WELL (AND VALVE VAULT AND METERING VAULT IF APPLICABLE). ROMTEC UTILITIES WILL PROVIDE A REPRESENTATIVE FOR TECHNICAL ASSISTANCE ON THE DAY OF INSTALLATION TO ANSWER ANY QUESTIONS THAT MAY ARISE. THE CONTRACTOR IS RESPONSIBLE FOR ALL PLUMBING AND ELECTRICAL CONNECTIONS AND INSTALLATION. ITEMS NOTED AS "BY OTHERS" WILL BE PROVIDED AND INSTALLED BY THE CONTRACTOR. ROMTEC UTILITIES WILL NOT INSTALL ANY OF THE COMPONENTS SHOWN ON THIS PAGE.

© 2018 ROMTEC INC. ALL RIGHTS RESERVED. THESE PLANS AND DRAWINGS MAY NOT BE REPRODUCED, ADAPTED, OR FURTHER DISTRIBUTED, AND NO COMPONENTS MAY BE CONSTRUCTED FROM THESE PLANS, WITHOUT WRITTEN PERMISSION OF ROMTEC, INC.

12" THICK CAST-IN-PLACE CONCRETE THRUST RESTRAINT COLLAR ON EACH END. (BY OTHERS)

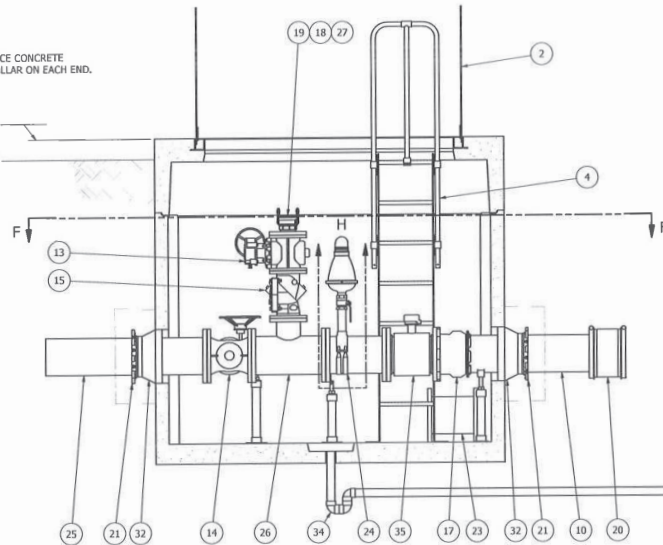


SECTION F-F  
SCALE 1 / 18

NOTE: TOP SLAB AND HATCH ARE PEDESTRIAN RATED

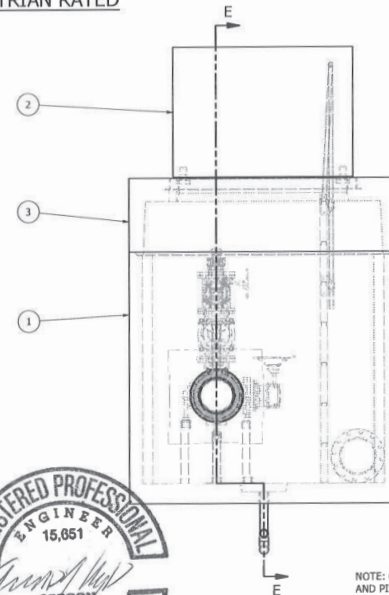
12" THICK CAST-IN-PLACE CONCRETE THRUST RESTRAINT COLLAR ON EACH END. (BY OTHERS)

RIM ELEVATION: 178.40'  
FINISH GRADE ELEVATION: 177.89'



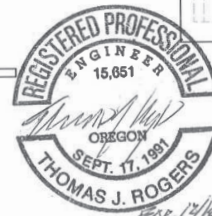
SECTION E-E  
SCALE 1 / 18

ITEM	QTY	STOCK NUMBER	PARTS LIST	DESCRIPTION
1	1	38-CB687000	BASE - W - 687	
2	1	23-HH6870PE	HATCH - W - 687 - PEDESTRIAN	
3	1	24-CT687PD0	TOP SLAB - W - 687 - PED	
4	1	25-LD07200	LADDER - ASSEMBLY - 7Ft-21in	
5	1	25-PS065925	PIPE STAND - 30455 - 6in SADDLE	
6	4	25-PS080BASE	PIPE STAND BASE - 30455 - 2in - 2 BOLT	
7	1	25-PS100RFL	PIPE STAND - 30455 - 10in FLANGE	
8	2	25-PS10589F	PIPE STAND - 10in FLANGE	
9	5.4 ft	40-PP0200K4	PIPE - 30455 SCH40 - 2in DIA (PIPE STANDS)	
10	4.0 ft	40-PP100000	PIPE - DI - 10in DIA - CLS2 (2 x 4ft)	
11	1	40-TT020854	NIPPLE - 30455 - 2in DIA x 8in	
12	1	41-BV020056	BALL VALVE - 316SS - 2in	
13	1	41-PV060HD0	PLUG VALVE - 6in - GEARED HANDWHEEL	
14	1	41-PV100HD0	PLUG VALVE - 10in - GEARED HANDWHEEL	
15	1	42-SF060000	CHECK VALVE - SMING FLEX - 6in	
16	1	43-AV0200ART	VALVE - AIR VACUUM RELEASE - 2in - ART	
17	1	44-AD100MAL	FLANGE ADAPTER - 10in - ALPHA	
18	1	44-CL0404DM	CAM LOCK - ALUM - 4in - PLUS/HRPT	
19	1	44-CL0404CAP	CAM LOCK - ALUM - 4in - SOCKET CAP	
20	1	44-CP100AD0	COUPLING - 10in - ROMAC ALPHA	
21	2	44-RG1005TR	RETAINER GLAND - 10in	
22	1	44-TS100200	TAPPING SADDLE - 10in PIPE x 2in	
23	1	45-FF100150	SPOOL - DI - 10in DIA x 15in - FLGXFLG (SPARE)	
24	1	45-FF100180	SPOOL - DI - 10in DIA x 18in - FLGXFLG	
25	1	45-FF100480	SPOOL - DI - 10in DIA x 48in - FLGXPE	
26	1	46-TE10060T	TEE - DI - 10in x 6in - FLGXFLG.1pt	
27	1	48-FL0604D0	FLANGE - DI - 6in - BLIND - 4" FNPT TAP	
28	3	49-GS060000	GASKET - FLANGE - 6in	
29	4	49-GS100000	GASKET - FLANGE - 10in	
30	43.5 ft	51-SE01015L	JOINT SEALANT - 1in x 1in -CS-202	
31	31 ft	51-TC060000	JOINT WRAP - 6in - TAPECOAT	
32	2	59-KB161000	KOR-N-SEAL - 16in CORE x 10in PIPE	
33	17.7 ft	70-PP0200P4	PIPE - PVC SCH40 - 2in DIA	
34	3	76-EL020040	ELBOW - PVC SCH40 - 2in x 90deg - SLIP	
35	1	82-FM1012RM	FLOWMETER - 10in	



NOTE: CONTRACTOR TO SEAL ALL CONCRETE JOINTS AND PIPE PENETRATIONS WITH NON-SHRINK GROUT

NOTE: ALL DIMENSIONS AND ELEVATIONS SHOWN ARE NOMINAL DIMENSIONS. IT IS THE RESPONSIBILITY OF THE ON-SITE CONTRACTOR OR ROMTEC UTILITIES CUSTOMER (NOT ROMTEC UTILITIES) TO VERIFY THE ACCURACY OF ANY CRITICAL DIMENSIONS OR ELEVATIONS PRIOR TO SETTING OR INSTALLING ANY EQUIPMENT.



DATE	BY	DESCRIPTION
9/6/2018	ANBY	ADDED PUMPING PORT AND ARV ASSEMBLY
4/24/18	ANBY	REVISED
REVISION HISTORY		

**ROMTEC UTILITIES**  
18240 NORTH BANK ROAD  
ROSEBURG, OREGON 97470  
PH: 503.325.8000  
WWW.ROMTECUTILITIES.COM

BOONE'S CROSSING  
WOODBURN, OR  
METER VAULT ASSEMBLY  
COMPONENT DRAWING