

ACCEPTED PUMP PERFORMANCE STANDARDS

- A. ROMTEC UTILITIES HAS SELECTED A PUMP OR PUMPS FOR THIS SYSTEM TO MEET THE DESIGN CRITERIA. THE PUMP PERFORMANCE CURVE(S) SHOW THE PUMP ACHIEVING A PUMPING RATE (GPM) AT A SPECIFIC TOTAL DYNAMIC HEAD (TDH). THE INDUSTRY STANDARDS FOR MEETING THE TARGET POINT ARE AS FOLLOWS:
- B. THE HYDRAULIC INSTITUTE HAS A LEVEL A AND LEVEL B ACCEPTANCE. LEVEL A ALLOWS +10% FLOW AT THE RATED TDH, OR +8% TDH AT THE RATED FLOW WITH NO NEGATIVE TOLERANCE. LEVEL B DOES HAVE SOME MINUS TOLERANCE: +/-5% OF RATED FLOW AT RATED TDH OR +5/-3% OF RATED TDH AT RATED FLOW.
- C. THE PUMPS SHOULD PERFORM WITHIN THIS RANGE AS LONG AS THE TDH PROVIDED BY THE CUSTOMER FOR DESIGN IS TRUE IN THE FIELD. WHEN ROMTEC UTILITIES CALCULATES THE TDH USING CUSTOMER SUPPLIED DOCUMENTS (FORCE MAIN PROFILES, ETC.) AND THE FIELD CONDITIONS DIFFER FROM THE PLANS, ROMTEC UTILITIES CANNOT BE HELD RESPONSIBLE FOR PUMP PERFORMANCE ISSUES TIED TO CHANGES IN THE CALCULATED TO ACTUAL TDH.

OUTFALL DESIGN

- A. ROMTEC UTILITIES IS NOT RESPONSIBLE FOR THE DESIGN OF THE OUTFALL STRUCTURE AT THE END OF THE FORCE MAIN. ROMTEC UTILITIES HAS NOT REVIEWED THE SIZE OF THE OUTFALL STRUCTURE TO MAKE SURE IT IS ADEQUATE FOR THE PUMPING RATE COMING FROM THE ROMTEC UTILITIES SYSTEM. THIS DESIGN AND REVIEW IS THE RESPONSIBILITY OF THE OWNER AND/OR THEIR REPRESENTATIVE.
- B. ANY ISSUES WITH THE OUTFALL STRUCTURE DURING START-UP AND OPERATION OF THE SYSTEM ARE THE RESPONSIBILITY OF OTHERS.

FINAL CONCRETE DIMENSIONS

- A. ACTUAL DIMENSIONS WILL BE WITHIN +/- 0.5" FOR MAJOR DIMENSIONS (HEIGHT, LENGTH, WIDTH, CORE LOCATIONS, WALL THICKNESS, ETC) OF THE APPROVED PRODUCTION DRAWING. ROMTEC UTILITIES WILL NOT ACCEPT ANY COSTS ASSOCIATED WITH FIELD ADJUSTMENTS OR ENGINEERED PLAN REVISIONS BASED ON SLIGHT CHANGES TO CONCRETE DIMENSIONS IN THE FIELD.

NOTE: IT IS NOT POSSIBLE FOR CONCRETE PRECASTERS TO CAST BARRELS, BASES AND TOP SLABS TO EXACT DIMENSIONS MEASURED IN HUNDREDTHS OF AN INCH. THE PRODUCTION DRAWINGS FOR THE PRECAST CONCRETE INCLUDED IN THE SUBMITTAL SHOW DIMENSIONS TO THE 0.01", BUT IT IS NOT REALISTIC TO CAST CONCRETE TO THESE EXACT DIMENSIONS.

- B. ALL CONCRETE JOINTS MUST BE CLEANED PRIOR TO APPLYING BUTYL SEALANT AND JOINT WRAP.
- C. ELECTRICAL CORED HOLES ARE **NOT** BY ROMTEC UTILITIES.

NOTE: SITE MATERIALS, DESIGN INFORMATION, AND SERVICES **NOT** SUPPLIED BY ROMTEC UTILITIES:

- GRADING
- WIRING AND CONDUIT
- FENCING AND PAVING
- SITE LIGHTING
- SITE UTILITIES (WATER, POWER, ETC)
- SCADA ANTENNA
- ALL ON-SITE INSTALLATION

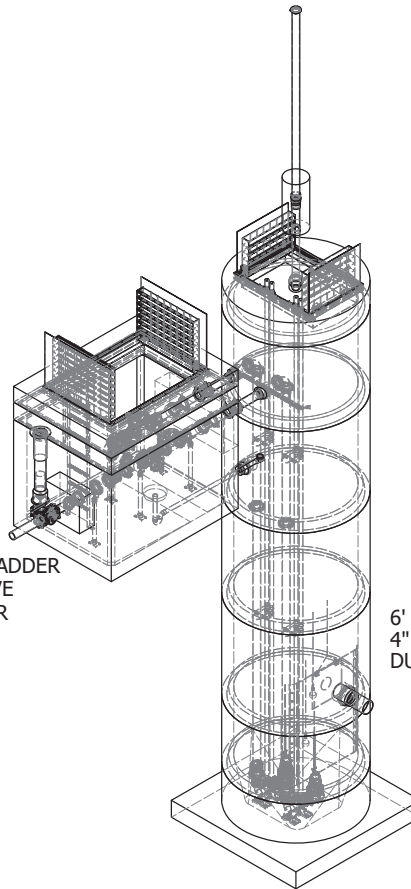
PRELIMINARY SITE LAYOUT

BASED ON SITE PLANS RECEIVED 1-15-19

WET WELL DEPTH: 30.7'
 DISTANCE TO TERMINATION: 16.5'
 NOTE: CABLES TO BE TERMINATED IN APPROVED JUNCTION BOX OR CONTROL PANEL.

APPROX. CABLE LENGTH NEEDED: 50'
 PUMP CABLE LENGTH: 50'
 TRANSDUCER CABLE LENGTH: 60'
 FLOAT CABLE LENGTH: 65'

687 VALVE VAULT
 4" PIPING AND VALVES
 FUTURE FLOW METER - LADDER
 EXTERNAL SHUTOFF VALVE
 FOR FUTURE FLOW METER

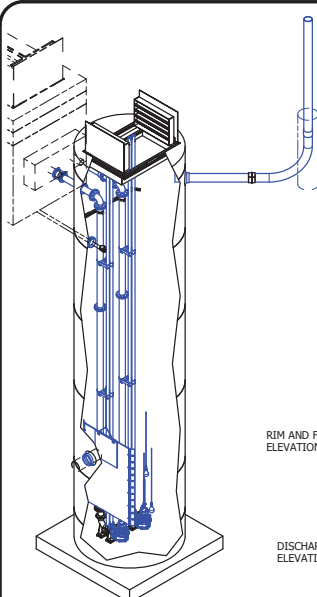


6' DIAMETER WET WELL
 4" DISCHARGE PIPING
 DUPLEX FLYGT PUMPS

ISO VIEW
 SCALE 1 / 36

© 2018 ROMTEC INC. ALL RIGHTS RESERVED. THESE PLANS AND DRAWINGS MAY NOT BE REPRODUCED, ADAPTED, OR FURTHER DISTRIBUTED, AND NO COMPONENTS MAY BE CONSTRUCTED FROM THESE PLANS, WITHOUT WRITTEN PERMISSION OF ROMTEC, INC.

<p>ROMTEC UTILITIES 18240 NORTH BANK ROAD ROSELBURG, OREGON 97470 PHONE: (503) 995-9678 WWW.ROMTECUTILITIES.COM</p>	<p>DATE: 10-10-18</p>												
<p>ONTARIO CHRISTIAN HIGH SCHOOL CALIFORNIA</p>	<p>REVISION HISTORY</p> <table border="1" style="width: 100%; border-collapse: collapse;"> <thead> <tr> <th>NO.</th> <th>DATE</th> <th>DESCRIPTION</th> <th>BY</th> </tr> </thead> <tbody> <tr> <td>1</td> <td>1/16/2019</td> <td>UPDATED SITE PLAN</td> <td>AD</td> </tr> <tr> <td>2</td> <td>1-4-19</td> <td>TALL METALLIC VENT</td> <td>KB</td> </tr> </tbody> </table>	NO.	DATE	DESCRIPTION	BY	1	1/16/2019	UPDATED SITE PLAN	AD	2	1-4-19	TALL METALLIC VENT	KB
NO.	DATE	DESCRIPTION	BY										
1	1/16/2019	UPDATED SITE PLAN	AD										
2	1-4-19	TALL METALLIC VENT	KB										
<p>PUMP STATION ASSEMBLY GENERAL NOTES COMPONENT DRAWING</p>													
<p>MECHANICAL SHEET 1 OF 5</p>													

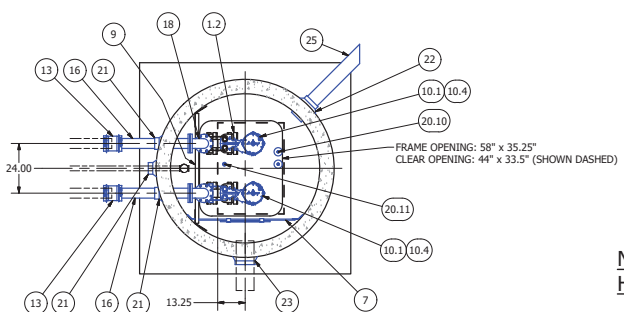


ISO VIEW
SCALE 1/48

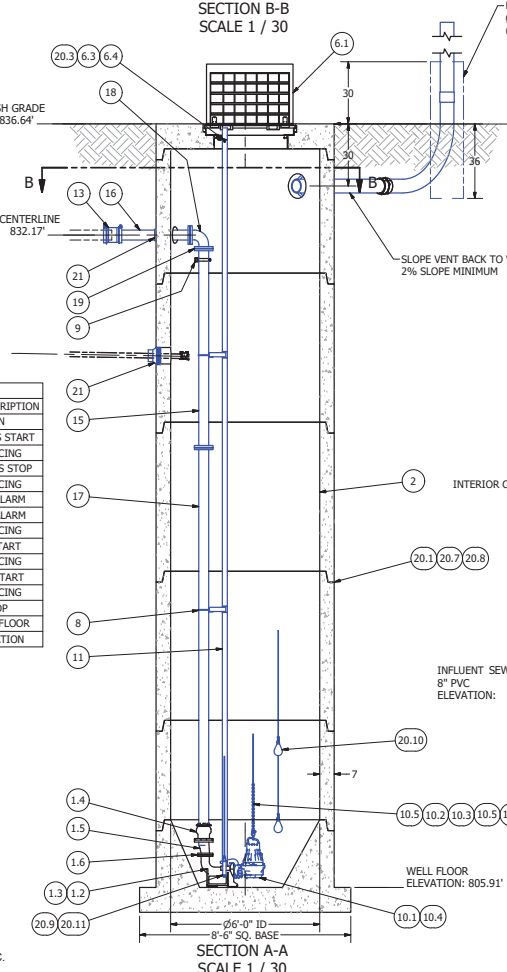
SENSOR AND ELEVATION TABLE		
LEVEL ELEVATION	DISTANCE BETWEEN POINTS	SET POINT DESCRIPTION
813.50		INVERT IN
813.24		BACK UP PUMPS START
812.74	0.50	SENSOR SPACING
812.74		BACK UP PUMPS STOP
812.24	0.50	SENSOR SPACING
811.74		BACK UP HL ALARM
811.74	0.50	HIGH LEVEL ALARM
811.24		SENSOR SPACING
811.24	1.00	LAG PUMP START
810.24		SENSOR SPACING
810.24	1.60	LEAD PUMP START
808.64		SENSOR SPACING
808.64		PUMP STOP
805.91	2.73	DISTANCE TO FLOOR
805.91		FLOOR ELEVATION

ALL MATERIALS SHOWN ON THIS SHEET WILL BE SUPPLIED BY ROMTEC UTILITIES AND DELIVERED TO THE SITE AFTER THE HOLE HAS BEEN EXCAVATED AND SHORED. THE CONTRACTOR SHALL SUPPLY A CRANE OF SUFFICIENT SIZE TO LOWER ALL THE CONCRETE PIECES INTO THE HOLE SAFELY. THE CONTRACTOR SHALL INSTALL THE WET WELL (AND VALVE VAULT AND METERING VAULT IF APPLICABLE). ROMTEC UTILITIES WILL PROVIDE A REPRESENTATIVE FOR TECHNICAL ASSISTANCE ON THE DAY OF INSTALLATION TO ANSWER ANY QUESTIONS THAT MAY ARISE. THE CONTRACTOR IS RESPONSIBLE FOR ALL PLUMBING AND ELECTRICAL CONNECTIONS AND INSTALLATION. ITEMS NOTED AS "BY OTHERS" WILL BE PROVIDED AND INSTALLED BY THE CONTRACTOR. ROMTEC UTILITIES WILL NOT INSTALL ANY OF THE COMPONENTS SHOWN ON THIS PAGE.

© 2018 ROMTEC INC. ALL RIGHTS RESERVED. THESE PLANS AND DRAWINGS MAY NOT BE REPRODUCED, ADAPTED, OR FURTHER DISTRIBUTED, AND NO COMPONENTS MAY BE CONSTRUCTED FROM THESE PLANS, WITHOUT WRITTEN PERMISSION OF ROMTEC, INC.



SECTION B-B
SCALE 1/30



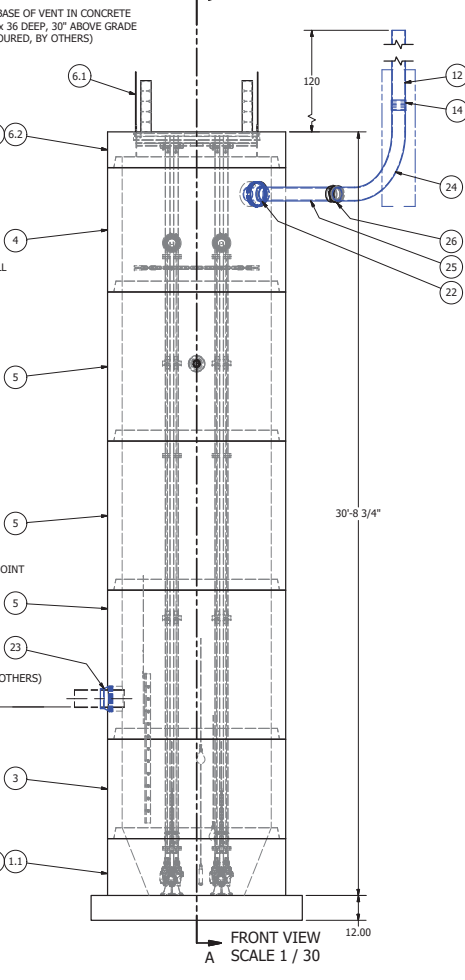
SECTION A-A
SCALE 1/30

COLOR LEGEND

- MAJOR CONCRETE COMPONENTS WITH PRE-INSTALLED COMPONENTS.
- COMPONENTS PRE-ASSEMBLED TO THE EXTENT POSSIBLE AND WILL NEED TO BE FIELD INSTALLED.

NOTE: PRE-ASSEMBLY IS DONE AT ROMTEC UTILITIES' DISCRETION AND MAY CHANGE AT THE TIME OF PRODUCTION.

NOTE: TOP SLAB AND HATCH ARE H-20 OCCASIONAL TRAFFIC RATED



FRONT VIEW
A
SCALE 1/30

		PARTS LIST	
ITEM	QTY	STOCK NUMBER	DESCRIPTION
1	1	10-CB000000	BASE SLAB ASSEMBLY
1.1	1	10-CB068HSQ	BASE - CONCRETE - 6ft DIA - RU DESIGN - SQUARE
1.2	2	31-EL0300F0	DISCHARGE ELBOW - DI - 3in - FLYGT
1.3	2	31-HH00KKS	ANCHOR KIT - 316SS - DISCHARGE ELBOW
1.4	2	44-AD04RAL	FLANGE ADAPTER - DI - 4in - ALPHA
1.5	2	48-RD043DE	REDUCER - DI - 4in x 3in - ECCENTRIC
1.6	2	49-GS03000	GASKET - SBR - FLANGE - 3in
2	1	11-LC0600IN	COATING - INTERIOR - 6ft DIA - TNEMEC 61
3	1	12-CR064800	BARREL - 6ft DIA x 4ft H
4	1	12-CR060000	BARREL - 6ft DIA x 5ft H
5	3	12-CR067200	BARREL - 6ft DIA x 6ft H
6	1	14-CT000000	TOP SLAB ASSEMBLY
6.1	1	13-HH06HD0E	HATCH - ALUM - H20 - 6ft - 33.5in x 44in
6.2	1	14-CT06HD00	TOP SLAB - CONCRETE - 6ft DIA - H20
6.3	1	17-AC300000	BOLT KIT - 316SS - UPPER GUIDE BAR BRACKET
6.4	2	17-UG0200F0	BRACKET - 316SS - UPPER GUIDE BAR - 2in
7	1	15-OP060000	DEFLECTOR PANEL ASSEMBLY - HDPE & 316SS - 6ft
8	4	17-LG0256FT	BRACKET - 316SS - INTERMEDIATE GUIDE BAR - 2in
9	1	18-BR000000	BRACKET ASSEMBLY - 316SS - DISCHARGE SUPPORT
10	1	30-PU000000	PUMP SHIPPING CRATE
10.1	2	30-PU0000F0	PUMP - FLYGT NP3085SH 4HP - 3in - 460V/3P - 50ft CABLE
10.2	2	32-BS0800SS	BOW SHACKLE - 316SS - 1-2in
10.3	2	32-BS3000SS	BOW SHACKLE - 316SS - 3-8in
10.4	2	32-CG0000SS	CORD GRIP - 316SS - .750in - .990 - SS
10.5	4 ft	32-PL9320SE	CHAIN - 316SS - 9-32in S5 - 2 @ 2ft
10.6	2	32-PLLSANYL	LIFTING SLING ASSEMBLY - COATED 316SS CABLE
11	116 ft	40-PP0200SE	PIPE - 316SS SCH40 - 2in DIA (GUIDE RAILS)
12	8.8 ft	40-PP0600GV	PIPE - GALV SCH40 - 6in DIA
13	2	44-CP040AD0	COUPLING - DI - 4in - ALPHA
14	1	44-CP0670V	COUPLING - GALV - 6in FNPT
15	2	45-FP040960	SPOOL - DI - 4in DIA x 96in - FLGxFLG
16	2	45-FP040360	SPOOL - DI - 4in DIA x 36in - FLGxPE
17	2	45-FP041920	SPOOL - DI - 4in DIA x 192in - FLGxPE
18	2	46-EL0490DI	ELBOW - DI - 4in x 90deg - FLGxFLG
19	6	49-GS040000	GASKET - SBR - FLANGE - 4in
20	1	50-AC000000	WELL SHIPPING CRATE
20.1	6	12-GS000001	GASKET - HDPE - BARREL JOINT
20.2	1	13-KY000000	HATCH KEY - ALUM
20.3	3	18-AC00CH00	CABLE HANGER ASSEMBLY - 316SS
20.4	4	18-HD040000	LIFTING CLUTCH - 4 TON
20.5	1	32-PLGE0000	GRIP EYE UNIT
20.6	1	51-AC0000ST0	NEVER SIEZE - TUBE
20.7	136 ft	51-BT060000	JOINT WRAP - 6in - BOA TAPE
20.8	145 ft	51-SE0101SL	JOINT SEALANT - 1in - CONSEAL CS-202
20.9	1	80-FI00PT00	DESSICANT FILTER - PRESSURE TRANSDUCER
20.10	2	80-FS20MSNL	FLOAT - 20m - MS1 - NOLTA
20.11	1	80-PT1500EH	PRESSURE TRANSDUCER - 0-15PSI - 60ft CABLE - E & H
21	3	59-KB000400	KOR-N-SEAL - EPDM - 8in CORE - 4in thru 1.5in PIPE
22	1	59-KB1206SS	KOR-N-SEAL - EPDM - 12in CORE x 6in IPS PIPE
23	1	59-KB1208PP	KOR-N-SEAL - EPDM - 12in CORE x 8in PVC PIPE
24	1	62-EL0690GV	CONDUIT ELBOW - 90deg - 6in - GALV
25	20 ft	70-PP0600P8	PIPE - PVC SCH80 - 6in DIA
26	1	74-AD0600BF	ADAPTER - PVC SCH80 - 6in - SLIP x FNPT

- NOTES:
- NOT ALL ITEMS ARE REPRESENTED WITH A 3D MODEL. SMALL ACCESSORIES (HATCH KEY, GRIP EYE UNIT, ETC) ARE SUPPLIED, BUT MAY NOT BE SHOWN ON THE DRAWING.
 - ALL HARDWARE IN WET WELL TO BE 316SS UNLESS OTHERWISE NOTED.
 - PUMPS ARE FM RATED FOR CLASS 1 DIV. 1 SPACE
 - PRESSURE TRANSDUCER IS FM RATED FOR CLASS 1 DIV. 1 SPACE

**6" DIAMETER WET WELL
4" DISCHARGE PIPING
DUPLX FLYGT PUMPS
4" 687 VALVE VAULT**

FOR DESIGN REVIEW

NOTE: CONTRACTOR TO SEAL ALL CONCRETE JOINTS AND PIPE PENETRATIONS WITH NON-SHRINK GROUT

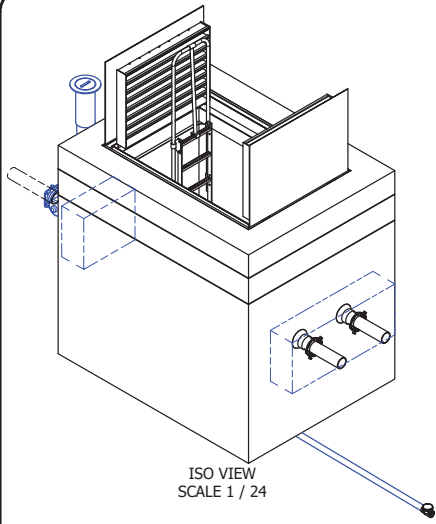
NOTE: ALL DIMENSIONS AND ELEVATIONS SHOWN ARE NOMINAL DIMENSIONS. IT IS THE RESPONSIBILITY OF THE ON-SITE CONTRACTOR OR ROMTEC UTILITIES CUSTOMER (NOT ROMTEC UTILITIES) TO VERIFY THE ACCURACY OF ANY CRITICAL DIMENSIONS OR ELEVATIONS PRIOR TO SETTING OR INSTALLING ANY EQUIPMENT.

REV	DATE	DESCRIPTION
1	10-25-18	ISSUED FOR PERMITS
2	10-25-18	REVISED PER COMMENTS
3	10-25-18	REVISED PER COMMENTS
4	10-25-18	REVISED PER COMMENTS
5	2-22-19	6" VENT PIPING

REV	DATE	DESCRIPTION
1	10-10-18	ISSUED FOR PERMITS
2	10-10-18	REVISED PER COMMENTS
3	10-10-18	REVISED PER COMMENTS
4	10-10-18	REVISED PER COMMENTS

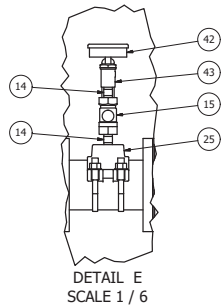
ROMTEC UTILITIES
18240 NORTH BANK ROAD
ROSEBURG, OREGON 97470
PHONE: (503) 995-9678
WWW.ROMTECUTILITIES.COM

ONTARIO CHRISTIAN HIGH SCHOOL
CALIFORNIA
WET WELL ASSEMBLY
COMPONENT DRAWING
6" DIA WELL - DUPLX FLYGT PUMPS



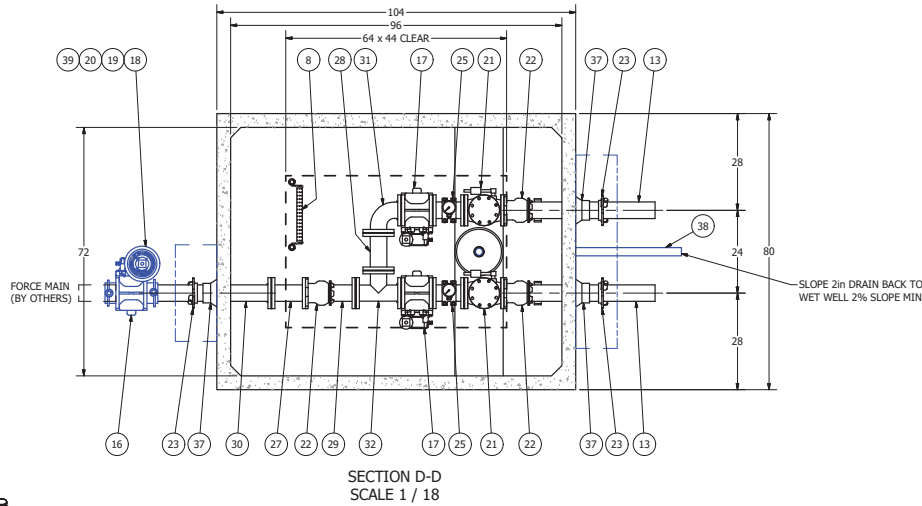
687 VALVE VAULT
4" PIPING AND VALVES
W/ FLOWMETER & GAUGES

FOR DESIGN REVIEW



ALL MATERIALS SHOWN ON THIS SHEET WILL BE SUPPLIED BY ROMTEC UTILITIES AND DELIVERED TO THE SITE AFTER THE HOLE HAS BEEN EXCAVATED AND SHORED. THE CONTRACTOR SHALL SUPPLY A CRANE OF SUFFICIENT SIZE TO LOWER ALL THE CONCRETE PIECES INTO THE HOLE SAFELY. THE CONTRACTOR SHALL INSTALL THE WET WELL (AND VALVE VAULT AND METERING VAULT IF APPLICABLE). ROMTEC UTILITIES WILL PROVIDE A REPRESENTATIVE FOR TECHNICAL ASSISTANCE ON THE DAY OF INSTALLATION TO ANSWER ANY QUESTIONS THAT MAY ARISE. THE CONTRACTOR IS RESPONSIBLE FOR ALL PLUMBING AND ELECTRICAL CONNECTIONS AND INSTALLATION. ITEMS NOTED AS "BY OTHERS" WILL BE PROVIDED AND INSTALLED BY THE CONTRACTOR. ROMTEC UTILITIES WILL NOT INSTALL ANY OF THE COMPONENTS SHOWN ON THIS PAGE.

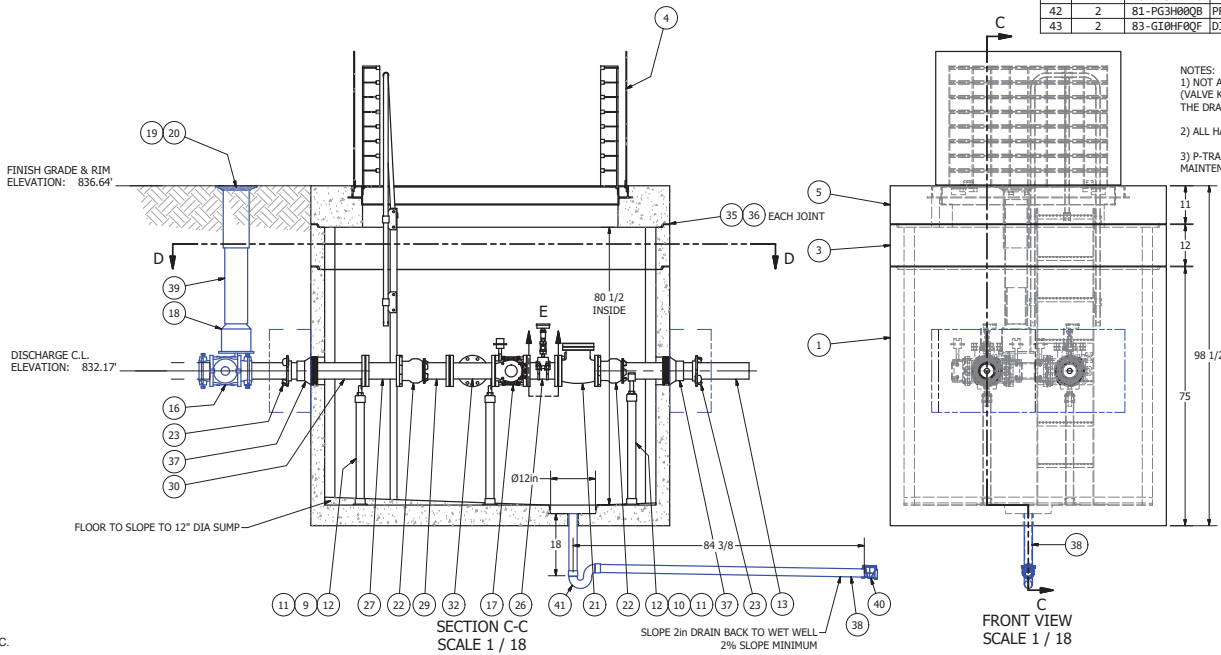
© 2018 ROMTEC INC. ALL RIGHTS RESERVED. THESE PLANS AND DRAWINGS MAY NOT BE REPRODUCED, ADAPTED, OR FURTHER DISTRIBUTED, AND NO COMPONENTS MAY BE CONSTRUCTED FROM THESE PLANS, WITHOUT WRITTEN PERMISSION OF ROMTEC, INC.



SECTION D-D
SCALE 1 / 18

**NOTE: TOP SLAB AND HATCH ARE
H-20 OCCASIONAL TRAFFIC RATED**

		PARTS LIST	
ITEM	QTY	STOCK NUMBER	DESCRIPTION
1	1	28-CB687800	BASE - CONCRETE - 687
2	1	28-GR999999	SLOPED GROUT FLOOR
3	1	22-CB687812	RISER - CONCRETE - 687 x 1ft
4	1	23-HM687806	HATCH - ALUM - 687 - H20 - SAFETY GRATE
5	1	24-CT687H00	TOP SLAB - CONCRETE - 687 - H20
6	1	25-KY00008R	BRACKET - STEEL - VALVE KEY
7	1	25-KY00006W	VALVE KEY - STEEL - 6ft - GATE WRENCH
8	1	25-LD070200	LADDER - ALLUM - 6ft-10in
9	3	25-PS04589F	PIPE STAND - 316SS - 4in FLANGE
10	2	25-PS04592S	PIPE STAND - 316SS - 4in SADDLE
11	5	25-PS088ASE	PIPE STAND BASE - 316SS - 2in - 2 BOLT
12	12.8 ft	40-PP020056	PIPE - 316SS SCH40 - 2in DIA
13	7.0 ft	40-PP0400D0	PIPE - DI - 4in DIA (2 x 3.5ft)
14	4	40-TT00H0254	NIPPLE - 316SS - 0.5in DIA x 2in
15	2	41-BV000056	BALL VALVE - 316SS - 0.5in
16	1	41-FV0400B0	PLUG VALVE - DI - 4in - GEARED OP NUT - BURIED SERVICE
17	2	41-FV0400C0	PLUG VALVE - DI - 4in - GEARED OP NUT
18	1	41-VB0000AS	VALVE BOX - CI - BASE
19	1	41-VB0000LD	VALVE BOX - CI - LTD
20	1	41-VB0000TP	VALVE BOX - CI - TOP
21	2	42-LW040000	CHECK VALVE - DI - LEVER & WEIGHT - 4in
22	3	44-AD0400AL	FLANGE ADAPTER - DI - 4in - ALPHA
23	3	44-RG0400STR	RETAINER GLAND - DI - 4in
24	2	44-RJ040050	JOINT RESTRAINT - 4in
25	2	44-TS0400H0	TAPPING SADDLE - DI - 4.8in x .5in NPT
26	2	45-FF040090	SPOOL - DI - 4in DIA x 9in - FLGXFLG
27	1	45-FF040093Q	SPOOL - DI - 4in DIA x 9.84in - FLGXFLG
28	1	45-FF041030	SPOOL - DI - 4in DIA x 10.75in - FLGXFLG
29	1	45-FP0400B0	SPOOL - DI - 4in DIA x 10in - FLGXFLG
30	1	45-FP0400C0	SPOOL - DI - 4in DIA x 36in - FLGXFLG
31	1	46-EL0490DI	ELBOW - DI - 4in x 90deg - FLGXFLG
32	1	46-TE0400DI	TEE - DI - 4in - FLGXFLG
33	2	48-PL0000HX	PLUG - 316SS - .25in NPT - HEX SOCKET
34	11	49-GS040000	GASKET - SBR - FLANGE - 4in
35	62 ft	51-BT060000	JOINT WRAP - 6in - BOA TAPE
36	72.5 ft	51-SE0101SL	JOINT SEALANT - 1in - CONSEAL CS-202
37	3	59-KB080400	KOR-N-SEAL - EPDM - 8in CORE - 4in thru 1.5in PIPE
38	8.0 ft	70-PP0200P4	PIPE - PVC SCH40 - 2in DIA
39	3.0 ft	70-PP0600DR	PIPE - PVC SDR35 - 6in DIA
40	1	72-DB0205P8	BACKWATER VALVE - PVC - 2in
41	1	76-EL02PT40	ELBOW - PVC DWV - 2in - P-TRAP
42	2	81-PG3000Q0	PRESSURE GAUGE - 3.5in DIA x .25in MNPT BACK - 60#
43	2	83-GI00F00F	DIAPHRAGM SEAL - 0.5in FNPT x 0.25in FNPT



SECTION C-C
SCALE 1 / 18

FRONT VIEW
SCALE 1 / 18

NOTES:
1) NOT ALL ITEMS ARE REPRESENTED WITH A 3D MODEL. SMALL ACCESSORIES (VALVE KEY, KEY BRACKET, ETC) ARE SUPPLIED, BUT MAY NOT BE SHOWN ON THE DRAWING.
2) ALL HARDWARE IN VAULT TO BE 316SS UNLESS OTHERWISE NOTED.
3) P-TRAP MUST BE MANUALLY PRIMED AS PART OF THE REGULAR MAINTENANCE/INSPECTION PROGRAM OF THE PUMP STATION.

NOTE:
ALL FITTINGS ARE IN ACCORDANCE WITH ANSI/AWWA C110/A21.10, UL AND FM REQUIREMENTS AND ARE UL, IULC, UL/NSF-61 LISTED AND FM APPROVED.
CHECK VALVES ARE IN ACCORDANCE WITH ANSI/AWWA C508 AND NSF/ANSI 61.
PLUG VALVES ARE IN ACCORDANCE WITH STANDARD ANSI/AWWA C517, NSF/ANSI 372
SERVICE SADDLE IS NSF61 CERTIFIED

COLOR LEGEND

 ■ MAJOR CONCRETE COMPONENTS WITH PRE-INSTALLED COMPONENTS.
 ■ COMPONENTS PRE-ASSEMBLED TO THE EXTENT POSSIBLE AND WILL NEED TO BE FIELD INSTALLED.

NOTE: PRE-ASSEMBLY IS DONE AT ROMTEC UTILITIES' DISCRETION AND MAY VARY AT THE TIME OF PRODUCTION.
NOTE: CONTRACTOR TO SEAL ALL CONCRETE JOINTS AND PIPE PENETRATIONS WITH NON-SHRINK GROUT
NOTE: ALL DIMENSIONS AND ELEVATIONS SHOWN ARE NOMINAL DIMENSIONS. IT IS THE RESPONSIBILITY OF THE ON-SITE CONTRACTOR OR ROMTEC UTILITIES' CUSTOMER (NOT ROMTEC UTILITIES) TO VERIFY THE ACCURACY OF ANY CRITICAL DIMENSIONS OR ELEVATIONS PRIOR TO SETTING OR INSTALLING ANY EQUIPMENT.

AD	REV	DATE	DESCRIPTION
1	1	10-25-18	ISSUED FOR PERMITS
2	1	1-4-19	REVISED PER COMMENTS
3	1	1-4-19	REVISED PER COMMENTS
4	1	1-18-19	ADDED NOTES PER COMMENTS

DATE	BY	DESCRIPTION
10-10-18	AM	ISSUED FOR PERMITS
1-4-19	AM	REVISED PER COMMENTS
1-4-19	AM	REVISED PER COMMENTS
1-18-19	AM	ADDED NOTES PER COMMENTS

SCALE: 1" = 1'-0"
 0
 DATE: 10-10-18

ROMTEC UTILITIES
 18240 NORTH BANK ROAD
 ROSEBURG, OREGON 97470
 PHONE: (503) 995-9678
 WWW.ROMTECUTILITIES.COM

ONTARIO CHRISTIAN HIGH SCHOOL
 CALIFORNIA
 VALVE VAULT ASSEMBLY
 6 COMPONENT DRAWING
 687 VALVE - 4" PIPING
 MECHANICAL SHEET
 4 OF 5