

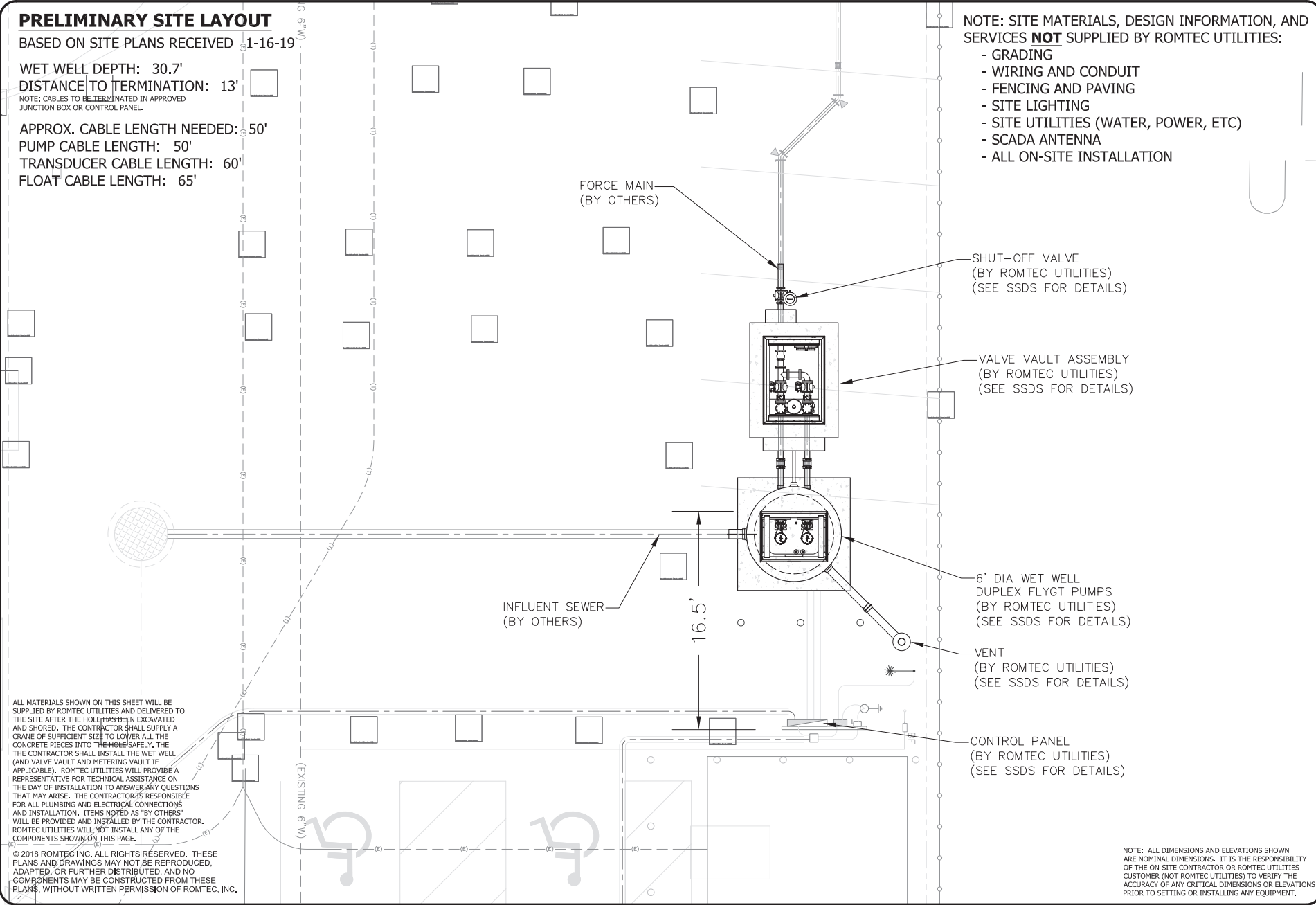
PRELIMINARY SITE LAYOUT

BASED ON SITE PLANS RECEIVED 1-16-19

- WET WELL DEPTH: 30.7'
- DISTANCE TO TERMINATION: 13'
- NOTE: CABLES TO BE TERMINATED IN APPROVED JUNCTION BOX OR CONTROL PANEL.
- APPROX. CABLE LENGTH NEEDED: 50'
- PUMP CABLE LENGTH: 50'
- TRANSDUCER CABLE LENGTH: 60'
- FLOAT CABLE LENGTH: 65'

NOTE: SITE MATERIALS, DESIGN INFORMATION, AND SERVICES **NOT** SUPPLIED BY ROMTEC UTILITIES:

- GRADING
- WIRING AND CONDUIT
- FENCING AND PAVING
- SITE LIGHTING
- SITE UTILITIES (WATER, POWER, ETC)
- SCADA ANTENNA
- ALL ON-SITE INSTALLATION



ALL MATERIALS SHOWN ON THIS SHEET WILL BE SUPPLIED BY ROMTEC UTILITIES AND DELIVERED TO THE SITE AFTER THE HOLES HAVE BEEN EXCAVATED AND SHORED. THE CONTRACTOR SHALL SUPPLY A CRANE OF SUFFICIENT SIZE TO LOWER ALL THE CONCRETE PIECES INTO THE HOLE SAFELY. THE CONTRACTOR SHALL INSTALL THE WET WELL (AND VALVE VAULT AND METERING VAULT IF APPLICABLE). ROMTEC UTILITIES WILL PROVIDE A REPRESENTATIVE FOR TECHNICAL ASSISTANCE ON THE DAY OF INSTALLATION TO ANSWER ANY QUESTIONS THAT MAY ARISE. THE CONTRACTOR IS RESPONSIBLE FOR ALL PLUMBING AND ELECTRICAL CONNECTIONS AND INSTALLATION. ITEMS NOTED AS "BY OTHERS" WILL BE PROVIDED AND INSTALLED BY THE CONTRACTOR. ROMTEC UTILITIES WILL NOT INSTALL ANY OF THE COMPONENTS SHOWN ON THIS PAGE.

© 2018 ROMTEC INC. ALL RIGHTS RESERVED. THESE PLANS AND DRAWINGS MAY NOT BE REPRODUCED, ADAPTED, OR FURTHER DISTRIBUTED, AND NO COMPONENTS MAY BE CONSTRUCTED FROM THESE PLANS, WITHOUT WRITTEN PERMISSION OF ROMTEC, INC.

NOTE: ALL DIMENSIONS AND ELEVATIONS SHOWN ARE NOMINAL DIMENSIONS. IT IS THE RESPONSIBILITY OF THE ON-SITE CONTRACTOR OR ROMTEC UTILITIES CUSTOMER (NOT ROMTEC UTILITIES) TO VERIFY THE ACCURACY OF ANY CRITICAL DIMENSIONS OR ELEVATIONS PRIOR TO SETTING OR INSTALLING ANY EQUIPMENT.

VERTICAL SCALE 0 1"	
DSR: AM DRN: AM CDD:	UPDATED WITH LATEST SITE PLAN 10-25-18 REVISED PER COMMENTS
DATE: 10-10-18	REVISION HISTORY
13240 NORTH BANK ROAD ROSEBURG, OREGON 97470 PHONE: (541) 995-9678 WWW.ROMTECUTILITIES.COM	
ONTARIO CHRISTIAN HIGH SCHOOL CALIFORNIA PUMP STATION ASSEMBLY SITE PLAN LAYOUT COMPONENT DRAWING	
MECHANICAL SHEET 2 OF 5	