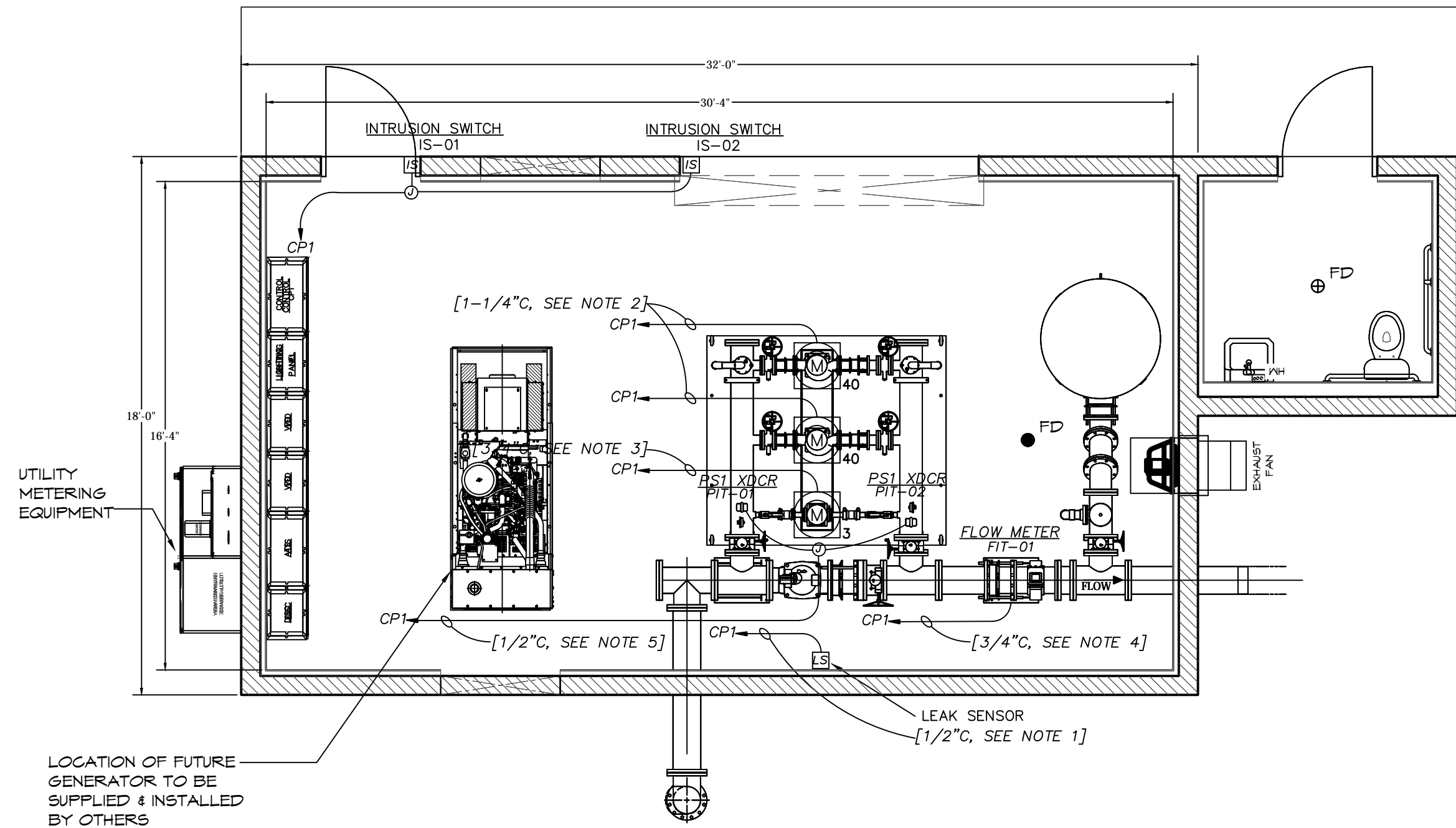


**KEYED NOTES:**

1. WATER LEAK DETECTOR (GEMS #197433) SHALL BE FIELD LOCATED. DETECTOR TO BE MOUNTED 1/4" ABOVE FINISHED FLOOR.
2. USE BELDEN 29505 CABLE OR EQUIVALENT.
3. USE BELDEN 29501 CABLE OR EQUIVALENT.
4. 3-#14 THWN CU FOR FLOW METER POWER. PROVIDED (2) BELDEN #8760 FOR 4/20mA AND DIGITAL OUTPUT.
5. (1) BELDEN 8760 PER PRESSURE TRANSMITTERS.



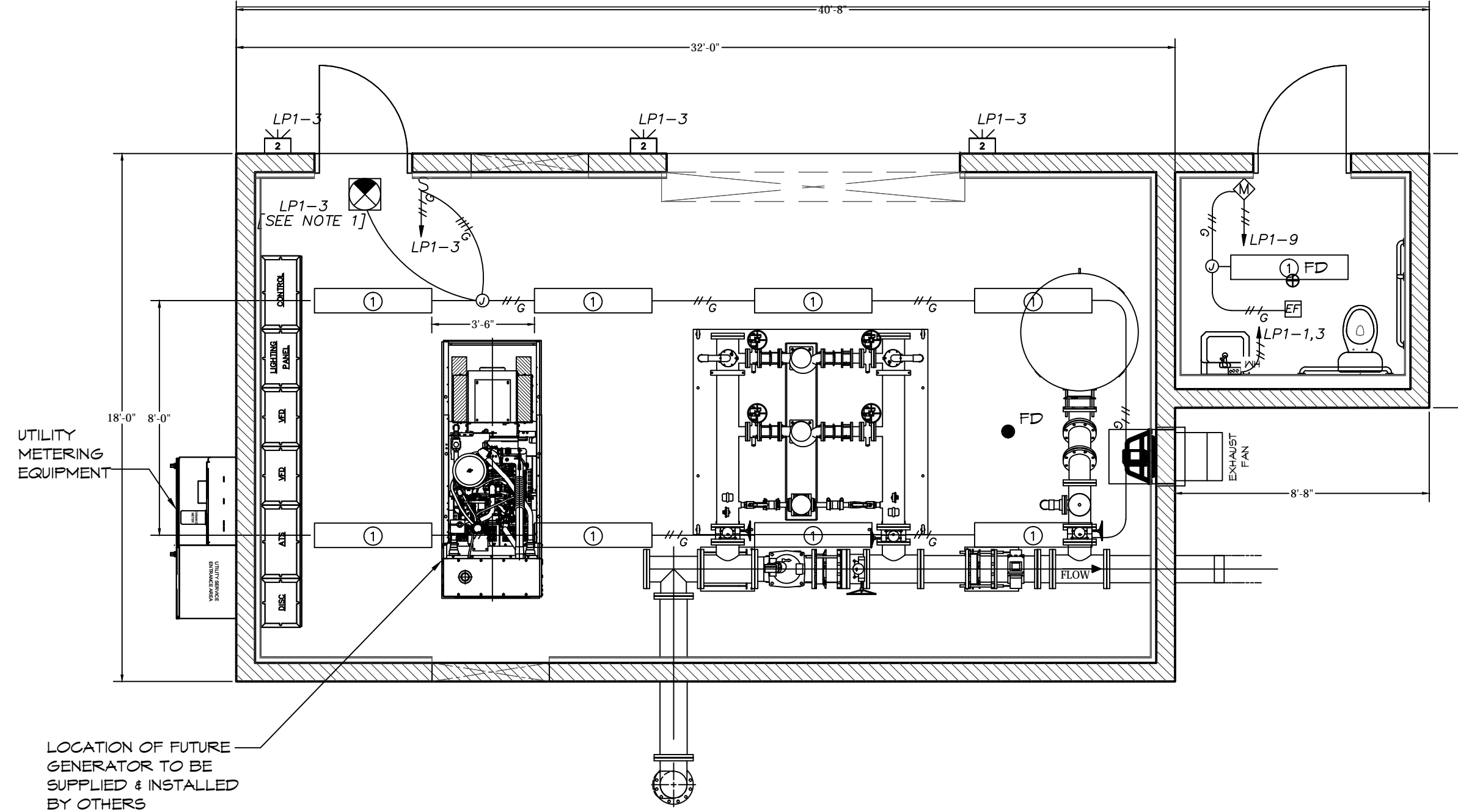
SHEET NO. **E1**

© 2018 ROMTEC, INC. ALL RIGHTS RESERVED. THESE PLANS AND DRAWINGS MAY NOT BE REPRODUCED, ADAPTED OR FURTHER DISTRIBUTED, AND NO BUILDINGS MAY BE CONSTRUCTED FROM THESE PLANS, WITHOUT THE WRITTEN PERMISSION OF ROMTEC, INC.

- ① LITHONIA LIGHTING #LBL4LP240
- ⊠ LITHONIA LIGHTING #OLAP11PEBZ
- ⊠ EMERGENCY LIGHT [SEE NOTE 1]
- ⊠ BROAN EXHAUST FAN #TT1
- ⊠ LEVITON OCCUPANCY SENSOR #IPS02

**KEYED NOTES:**

1. EMERGENCY EXIT LIGHT PER LOCAL STANDARDS (PROVIDED BY CONTRACTOR).

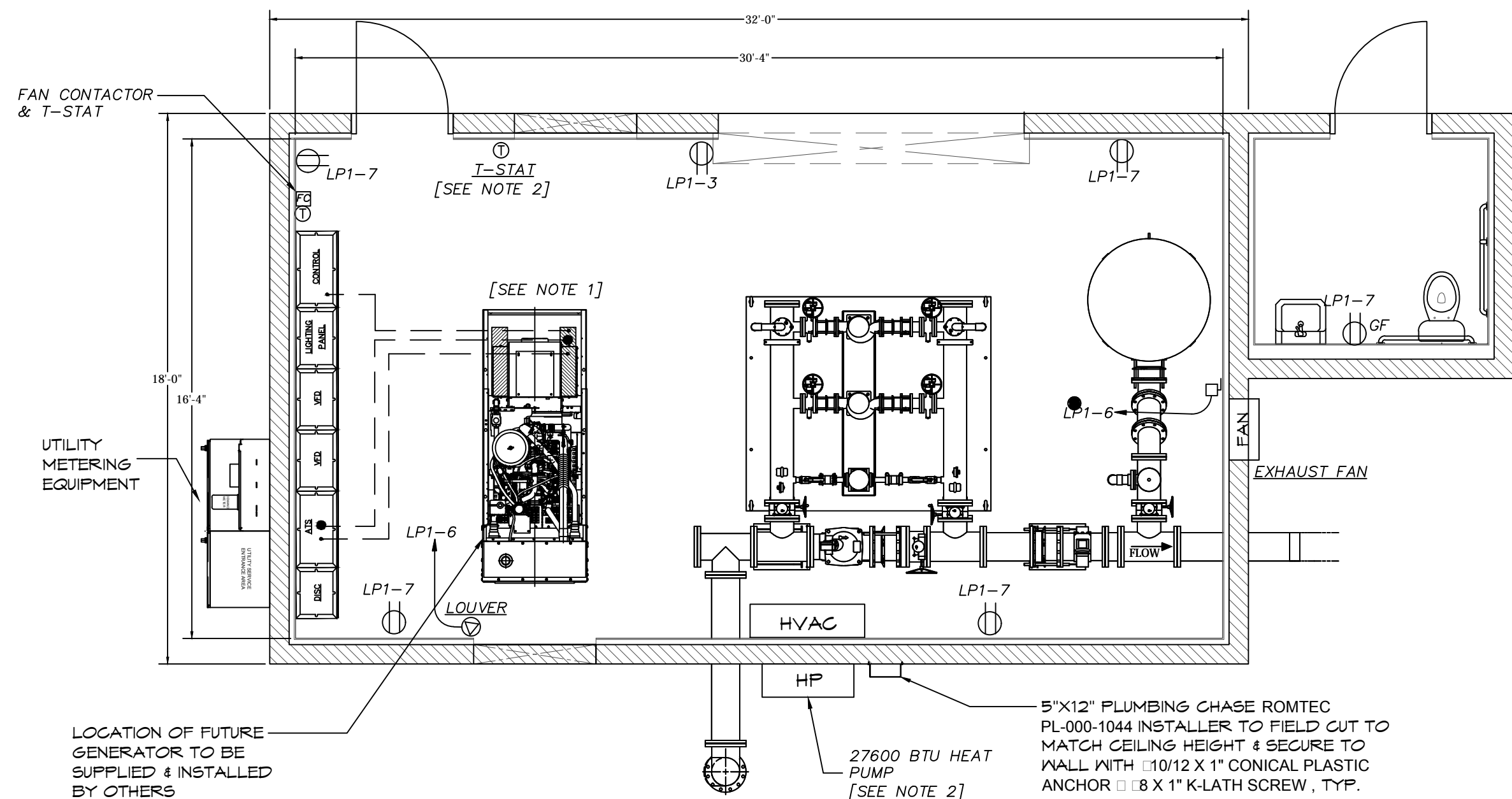


SHEET NO. **E2**

© 2018 ROMTEC, INC. ALL RIGHTS RESERVED. THESE PLANS AND DRAWINGS MAY NOT BE REPRODUCED, ADAPTED OR FURTHER DISTRIBUTED, AND NO BUILDINGS MAY BE CONSTRUCTED FROM THESE PLANS, WITHOUT THE WRITTEN PERMISSION OF ROMTEC, INC.

**KEYED NOTES:**

1. INSTALL (1) 3" RIGID METAL CONDUIT FOR POWER AND (2) 3/4" RIGID CONDUIT FOR CONTROL WIRES. CONDUITS TO BE FLUSH WITH FLOOR AT GENERATOR END. INSTALL CONDUIT PLUGS TO KEEP DEBRIS OUT OF CONDUITS. CONDUITS ARE FOR FUTURE USE.  
  
CONDUIT SHALL BE PVC COATED, HALF LAPPED WRAPPED WITH CORROSION PROTECTION TAPE OR COATED WITH CORROSION PROTECTION PAINT.  
  
VERIFY STUB UP LOCATION WITH GENERATOR MODEL PRIOR TO INSTALLING.
2. HEAT PUMP FED FROM LP1-2&4. WIRELESS THERMOSTAT TO BE FIELD LOCATED AND MOUNTED.



SHEET NO. **E3**

© 2018 ROMTEC, INC. ALL RIGHTS RESERVED. THESE PLANS AND DRAWINGS MAY NOT BE REPRODUCED, ADAPTED OR FURTHER DISTRIBUTED, AND NO BUILDINGS MAY BE CONSTRUCTED FROM THESE PLANS, WITHOUT THE WRITTEN PERMISSION OF ROMTEC, INC.

**GENERAL NOTES:**

1. VERIFY LIGHTING CIRCUITS WITH TESCO SUPPLIED LIGHTING PANEL SUBMITTAL DRAWINGS.

Panel Schedule LP1 1 Phase 3 Wire Voltage LL: 240 Voltage LG: 120

Ckt No	Description/Location	W Load Type	Criteria Ea	Qty	Den	Total VA	Remarks	Device Amps	P Rating	H Amps	Device Amps	P Rating	Total VA	W Load Type	Criteria Ea	Qty	Den	Description/Location	Ckt No
1	WATER HEATER	HTG	1750	1	3	1750		15	A	20			1212	HTG	1212	1	3	HEAT PUMP	2
3	WATER HEATER	HTG	1750	1	3	1750		15	B	20			1212	HTG	1212	1	3	HEAT PUMP	4
5	LIGHTING	LTG	32	1	3	352		15	A	15			671	FAN	671	1	3	FAN/LOUVER	6
7	RECEPTACLES	RECP	180	6	3	1080		20	B	15									8
9	BATHROOM LT/FAN	FAN	221	1	3	221		15	A	15									10
11	SPARE								B										12
13									B										14
15									B										16
17									B										18
ENDUSE LOADS:		PHASE A VA	4206	PHASE B VA		4042													
TOTAL LOADS:		CONNECTED KVA	8.2	DEMAND KVA		7.4													
		CONNECTED FLA	34.4	DEMAND FLA		30.7													

SHEET NO. **E4**

© 2018 ROMTEC, INC. ALL RIGHTS RESERVED. THESE PLANS AND DRAWINGS MAY NOT BE REPRODUCED, ADAPTED OR FURTHER DISTRIBUTED, AND NO BUILDINGS MAY BE CONSTRUCTED FROM THESE PLANS, WITHOUT THE WRITTEN PERMISSION OF ROMTEC, INC.

Standard members with notes included in the structural framework by RSE. Non-structural items are NOT included.

REV	DATE	BY	DESCRIPTION
1	11/02/2018	CR	CUSTOMER COMPANY'S ENG. RESUB
4	02/05/2018	CR	INTERNAL LAYOUT REVISIONS



**Precision Structural Engineering, Inc.**  
Klamath Falls Office  
250 Main Street, Klamath Falls, Oregon 97603  
Phone: (531) 868-9333  
info@precision1.com

**ROMTEC**  
18240 NORTH BANK ROAD  
ROSEBURG, OR 97470  
(541) 496-3541 FAX (541) 496-0803

PROJECT: CUSTOM UTILITY BUILDING  
CITY OF HESPERIA BOOSTER STATION  
HESPERIA, CALIFORNIA  
SHEET TITLE: ELECTRICAL PLANS & PANEL SCHEDULE  
PLAN SET: 18699  
DATE: 11/02/2018  
DRAWN BY: CR  
SHEET NO. 16/23