

**6' DIAMETER WET WELL
6" DISCHARGE PIPING
DUPLEX FLYGT PUMPS
6" VALVE & METER VAULTS
FOR DESIGN REVIEW**

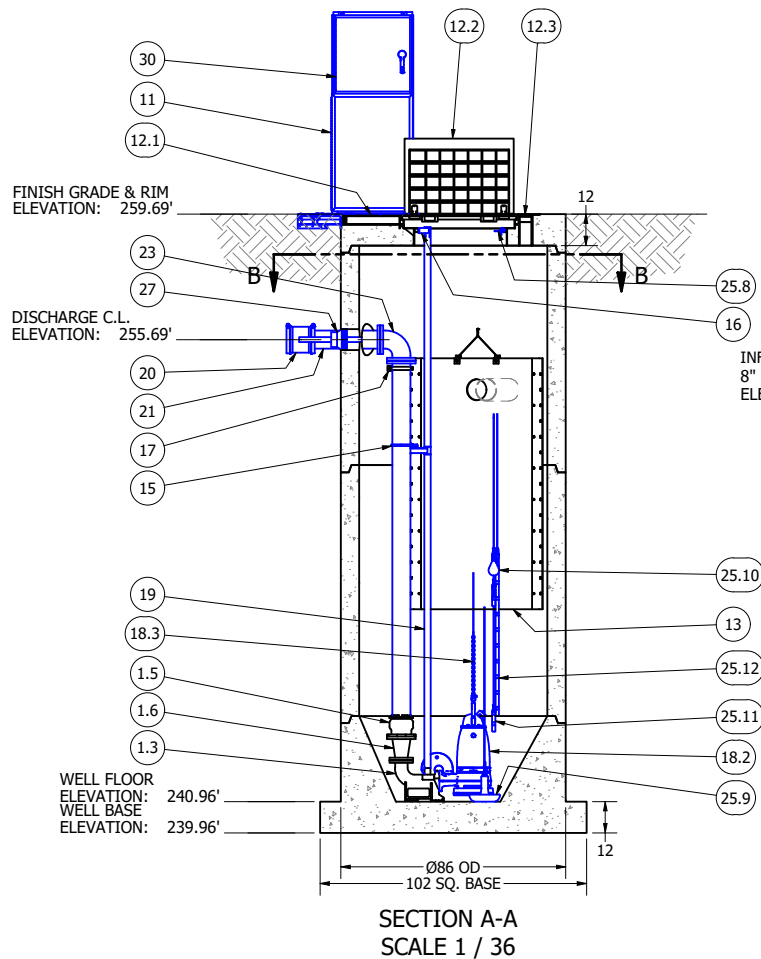
- COLOR LEGEND**
- MAJOR CONCRETE COMPONENTS WITH PRE-INSTALLED COMPONENTS.
 - COMPONENTS PRE-ASSEMBLED TO THE EXTENT POSSIBLE AND WILL NEED TO BE FIELD INSTALLED.

NOTE: PRE-ASSEMBLY IS DONE AT ROMTEC UTILITIES' DISCRETION AND MAY CHANGE AT THE TIME OF PRODUCTION.

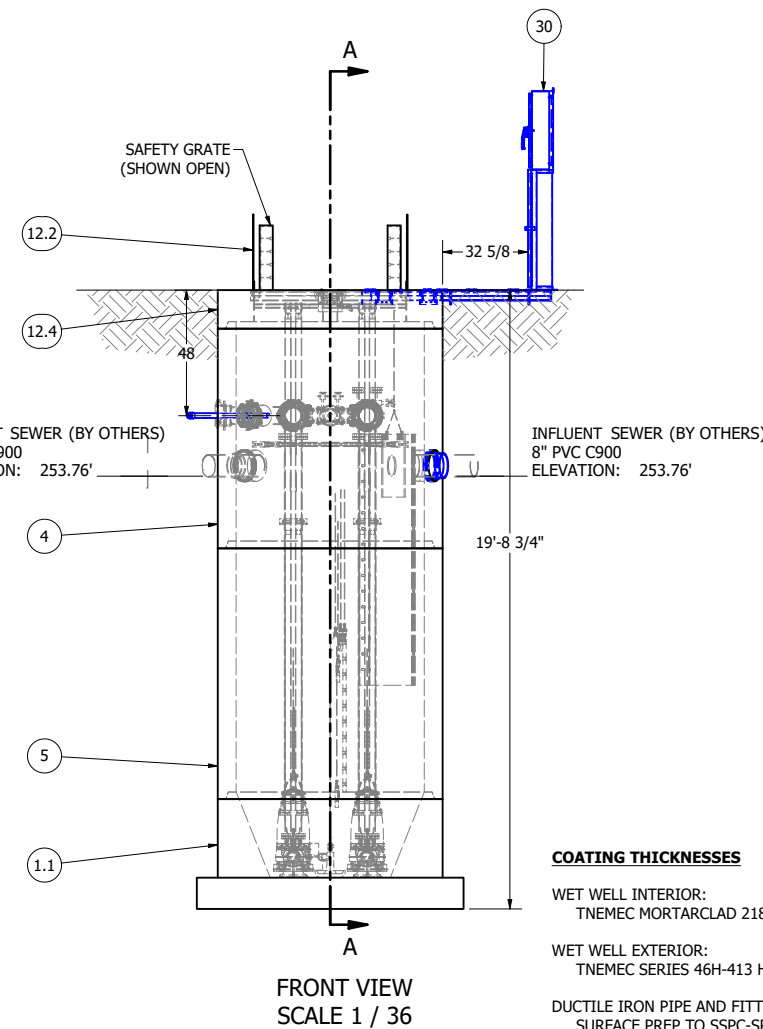
ALL MATERIALS SHOWN ON THIS SHEET WILL BE SUPPLIED BY ROMTEC UTILITIES AND DELIVERED TO THE SITE AFTER THE HOLE HAS BEEN EXCAVATED AND SHORED. THE CONTRACTOR SHALL SUPPLY A CRANE OF SUFFICIENT SIZE TO LOWER ALL THE CONCRETE PIECES INTO THE HOLE SAFELY. THE CONTRACTOR SHALL INSTALL THE WET WELL (AND VALVE VAULT AND METERING VAULT IF APPLICABLE). ROMTEC UTILITIES WILL PROVIDE A REPRESENTATIVE FOR TECHNICAL ASSISTANCE ON THE DAY OF INSTALLATION TO ANSWER ANY QUESTIONS THAT MAY ARISE. THE CONTRACTOR IS RESPONSIBLE FOR ALL PLUMBING AND ELECTRICAL CONNECTIONS AND INSTALLATION. ITEMS NOTED AS "BY OTHERS" WILL BE PROVIDED AND INSTALLED BY THE CONTRACTOR. ROMTEC UTILITIES WILL NOT INSTALL ANY OF THE COMPONENTS SHOWN ON THIS PAGE.



© 2020 ROMTEC INC. ALL RIGHTS RESERVED. THESE PLANS AND DRAWINGS MAY NOT BE REPRODUCED, ADAPTED, OR FURTHER DISTRIBUTED, AND NO COMPONENTS MAY BE CONSTRUCTED FROM THESE PLANS, WITHOUT WRITTEN PERMISSION OF ROMTEC, INC.



NOTE: TOP SLAB AND HATCH ARE H-20 OCCASIONAL TRAFFIC RATED



PRIMARY SENSOR ELEVATION TABLE		Δ
DESCRIPTION	ELEVATION	
INFLUENT INVERT	253.76'	
HIGH LEVEL ALARM	248.69'	0.50'
LAG PUMP START	248.19'	1.00'
LEAD PUMP START	247.19'	3.50'
PUMP STOP	243.69'	2.73'
WELL FLOOR	240.96'	

MISC. ELEVATION TABLE	
DESCRIPTION	ELEVATION
HIGH LEVEL (FLOAT)	250.69'
PUMPS START (PROBE)	249.69'
HIGH LEVEL (PROBE)	249.19'
LOW LEVEL (PROBE)	243.19'

PARTS LIST			
ITEM	QTY	STOCK NUMBER	DESCRIPTION
1	1	10-CB000000	BASE SLAB ASSEMBLY
1.1	1	10-CB068H0W	BASE - WW - 6ft DIA - RU DESIGN - SQUARE
1.2	1	11-LC0600RU	LINER - FIBERGLASS - 6ft DIA - RU
1.3	2	31-EL0400FL	DISCHARGE ELBOW - 4in - FLYGT
1.4	2	31-HW00AKS6	ANCHOR KIT - 316SS - DISCHARGE ELBOW
1.5	2	44-AD06RML	FLANGE ADAPTER - 6in - ALPHA
1.6	2	48-RD04DC9	REDUCER - DI - 6in x 4in - CONCENTRIC - TN 66
1.7	2	49-GS040000	GASKET - FLANGE - 4in
2	1	11-LC0600EX	COATING - EXTERIOR - TN 46H-413
3	1	11-LC0600IN	COATING - INTERIOR - TN
4	1	12-CR06840W	BARREL - 6ft DIA x 7ft H
5	1	12-CR069600	BARREL - 6ft DIA x 8ft H
6	1	13-CA0608EC	END CAP - 6in WIDE - CABLE TRAY EXT - 8in LONG
7	2	13-CA064500	ELBOW - 6in WIDE - 45deg - CABLE TRAY EXT
8	1	13-CA069000	ELBOW - 6in WIDE - 90deg - CABLE TRAY EXT
9	1	13-CAEX0624	CABLE TRAY - EXTENSION - 6in WIDE - 24in
10	1	13-CAEX0630	CABLE TRAY - EXTENSION - 6in WIDE - 30in
11	1	13-DS3030S5	DISCONNECT STAND - 304SS - 30in x 30in x 8in PANEL
12	1	14-CT000000	TOP SLAB ASSEMBLY
12.1	1	13-CA060000	CABLE TRAY - 6ft TOP SLAB
12.2	1	13-HH06HD0E	HATCH - H20 - 6ft - 33.5in x 44in
12.3	1	13-VT0000AL	VENT - ALUMINUM - FLUSH
12.4	1	14-CT06HD0W	TOP SLAB - 6ft DIA - H20
12.5	2	84-BR00PX00	BRACKET - SWITCH INTRUSION ALARM
12.6	2	84-PX00AC00	SWITCH - ACTUATOR
12.7	2	84-PX00IT00	SWITCH - INTRUSION ALARM
13	1	15-DP060000	DEFLECTOR PANEL ASSEMBLY - 6ft
14	2	17-AC38000B	BOLT KIT - UPPER GUIDE BAR BRACKET
15	2	17-IG0256FL	BRACKET - 316SS - INTERMEDIATE GUIDE - 2in
16	2	17-UG0200FL	BRACKET - 316SS - UPPER GUIDE BAR - 2in
17	1	18-BR000000	BRACKET - 316SS - DISCHARGE PIPE SUPPORT
18	1	30-PU000000	PUMP SHIPPING CRATE
18.1	1	30-MFVFLYGT	MIX FLUSH VALVE - FLYGT
18.2	2	30-PU0000FL	PUMP - FLYGT NP3153SH - 50ft CABLE
18.3	2	32-AC0000FL	LIFTING SLING ASSEMBLY - 316SS & ROPE
18.4	2	32-CGSS0000	CABLE SUPPORT GRIP - 304SS - 0.75in-0.99in
18.5	1	32-PLGE0000	GRIP EYE UNIT
19	68.0 ft	40-PP0200S6	PIPE - 316SS SCH40 - 2in DIA
20	2	44-CP060A00	COUPLING - 6in - ALPHA
21	2	45-FP060309	SPOOL - DI - 6in DIA x 30in - FLGXPE - TN 66
22	2	45-FP060969	SPOOL - DI - 6in DIA x 96in - FLGXPE - TN 66
23	2	46-EL690DI9	ELBOW - DI - 6in x 90deg - FLGXFLG - TN 66
24	4	49-GS060000	GASKET - FLANGE - 6in
25	1	50-AC000000	WELL SHIPPING CRATE
25.1	1	13-KY000000	HATCH KEY
25.2	2	18-AC00CH00	CABLE HANGER ASSEMBLY - 316SS
25.3	4	18-HD040000	LIFTING CLUTCH - 4 TON
25.4	1	51-AC00NSTB	NEVER SIEZE - TUBE
25.5	91 ft	51-JWCS2120	JOINT WRAP - 12in - CONSEAL CS-212
25.6	5	51-SECS1900	SEALANT - TUBE - CONSEAL CS-1900
25.7	91 ft	51-SECS231L	SEALANT - 2in x 1in - CONSEAL CS-231
25.8	1	62-BR00PB00	BRACKET - PROBE MOUNTING
25.9	1	80-ACANCHOR	LEVEL SENSOR ANCHOR ASSY
25.10	1	80-FS20MSNL	FLOAT - 20m - MS1 - NOLTA
25.11	3	80-PB0750MP	PROBE - LIQUID LEVEL - LP-7-1-50
25.12	1	80-PB6150MP	PROBE - LIQUID LEVEL - LP-61-10-50 - MPE
26	1	51-LC1TN066	PIPE COATING - TN 66
27	2	59-KB080400	KOR-N-SEAL - 8in CORE - 4in thru 1.5in PIPE
28	2	59-KB1206DI	KOR-N-SEAL - 12in CORE x 6in DIPS PIPE
29	2	59-KB1208DI	KOR-N-SEAL - 12in CORE x 8in DIPS PIPE
30	1	61-EP5000DC	DISCONNECT PANEL - 31-50FLA
31	20 ft	70-PP1H00P8	PIPE - PVC SCH80 - 1.5in DIA
32	1	76-EL1H4580	ELBOW - PVC SCH80 - 1.5in x 45deg - SLIP

COATING THICKNESSES

WET WELL INTERIOR:
TNEMEC MORTARCLAD 218 AND TNEMEC 435, 80 MILS COMPLETED.

WET WELL EXTERIOR:
TNEMEC SERIES 46H-413 HI BUILD TNEMEC-TAR, 16-20 MIL DFT

DUCTILE IRON PIPE AND FITTINGS:
SURFACE PREP TO SSPC-SP-10 (WHITE BLAST), ONE COAT TNEMEC 66, 3.0 - 5.0 MILS DFT.

STORAGE VOLUME CALCULATION

WELL STRUCTURE TO HOLD CONTENTS OF FORCE MAIN ABOVE ACTIVE VOLUME AND BELOW INVERT IN

FORCE MAIN LENGTH: 1075 ft (TO HIGH POINT)
FORCE MAIN ID: 6" NOM, 5.439" ACTUAL
FORCE MAIN SECTION AREA: .1561 sqft

VOLUME: 167.8 cu. ft
VOLUME: 1255 gallons

NOTE: ALL DIMENSIONS AND ELEVATIONS SHOWN ARE NOMINAL DIMENSIONS. IT IS THE RESPONSIBILITY OF THE ON-SITE CONTRACTOR OR ROMTEC UTILITIES CUSTOMER (NOT ROMTEC UTILITIES) TO VERIFY THE ACCURACY OF ANY CRITICAL DIMENSIONS OR ELEVATIONS PRIOR TO SETTING OR INSTALLING ANY EQUIPMENT.

REV	DATE	DESCRIPTION	BY
1	2-12-2020	REVISED ELEVATIONS, COMMENTS	AD
2	2-12-2020	REVISED ELEVATIONS, COMMENTS	AD
3	4/3/2020	PER COMMENTS	AD
4	5/26/2020	SHORTER WELL	KB

VERIFY SCALE: 0 1" (IF NOT FOR REVISION SCALE, CHECK THIS BOX)

DATE: 10-10-19

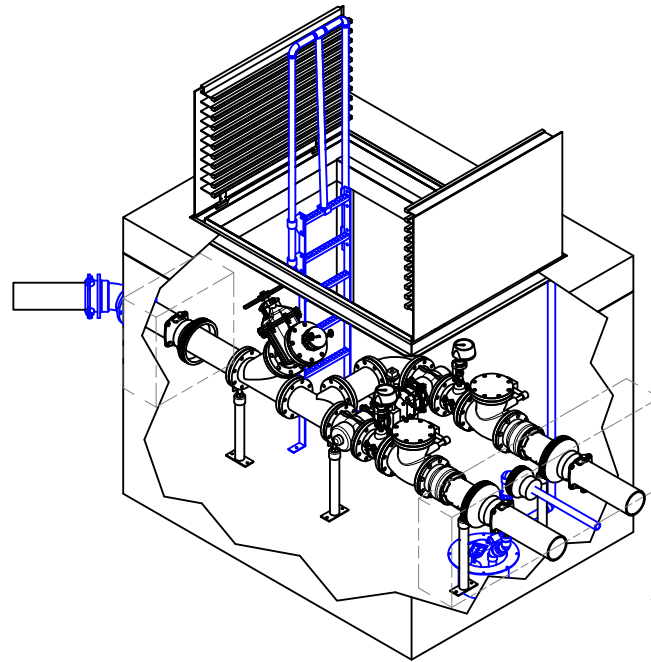
DSN: KB
DRN: KB
CKD: REV

18240 NORTH BANK ROAD
ROSEBURG, OREGON 97470
PHONE: (541) 496-9678
WWW.ROMTECUTILITIES.COM

BLUEBERRY RIDGE
PORT ORCHARD, WA

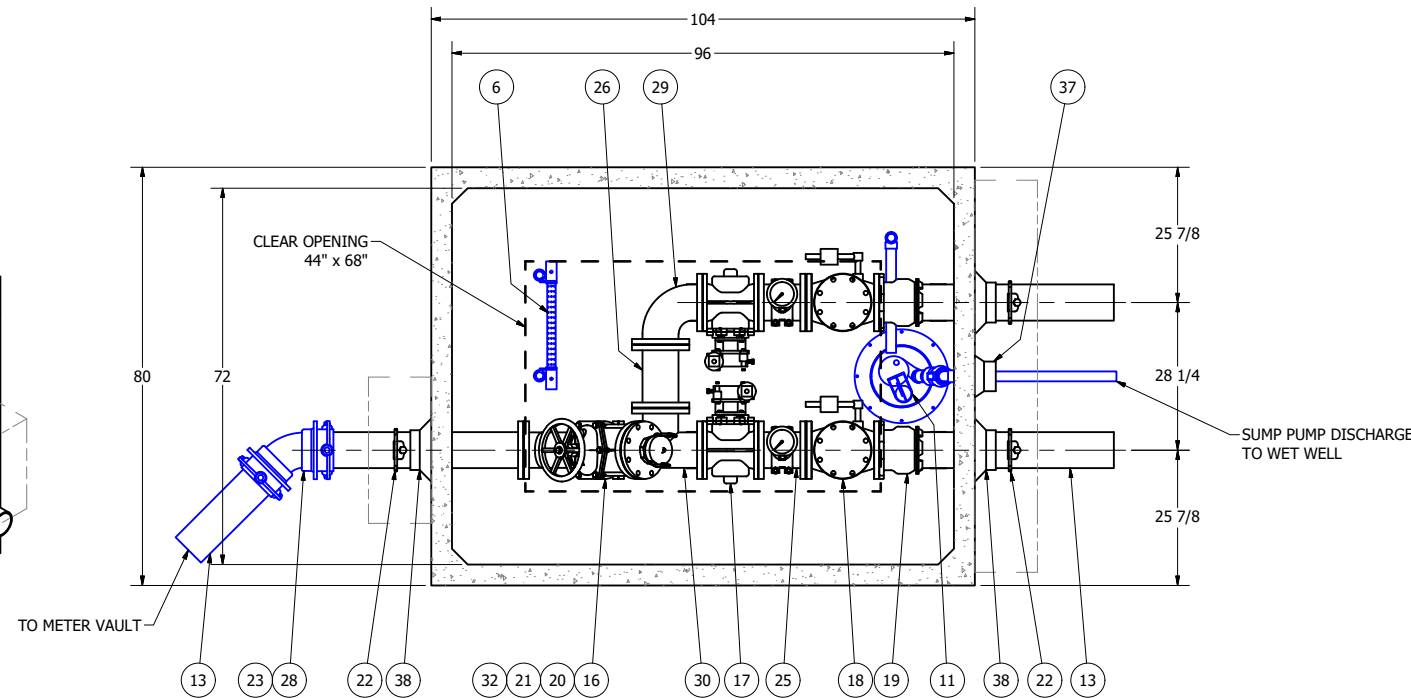
WET WELL ASSEMBLY
COMPONENT DRAWING

MECHANICAL SHEET
3 OF 5



ISO VIEW
SCALE 1 / 24

**687 VALVE VAULT
6" PIPING AND VALVES
W/ PIGGING PORT, SUMP PUMP
FOR DESIGN REVIEW**



12" THICK CAST-IN-PLACE CONCRETE THRUST RESTRAINT COLLAR ON EACH END. (BY OTHERS)

SECTION D-D
SCALE 1 / 18

COATING THICKNESSES

VALVE VAULT INTERIOR:
Tnemec 66 at 4.0-6.0 mils DFT, Tnemec 73 at 3 - 5 mil DFT

VALVE VAULT EXTERIOR:
Tnemec Series 46H-413 Hi Build Tnemec-tar, 16-20 mil DFT

DUCTILE IRON PIPE AND FITTINGS:
Surface prep to SSPC-SP-10 (white blast), one coat Tnemec 66, 3.0 - 5.0 mils DFT.

NOTE: TOP SLAB AND HATCH ARE H-20 OCCASIONAL TRAFFIC RATED

		PARTS LIST	
ITEM	QTY	STOCK NUMBER	DESCRIPTION
1	1	20-CB687000	BASE - WV - 687
2	1	23-HH6870HE	HATCH - WV - 687 - H20
3	1	24-CT687HD0	TOP SLAB - WV - 687 - H20
4	2	25-KY0000BR	BRACKET - VALVE KEY
5	1	25-KY0600GW	VALVE KEY - 6ft - GATE WRENCH
6	1	25-LD060000	LADDER - 6ft
7	5	25-PS00BAPL	PIPE STAND BASE PLATE - 304SS
8	3	25-PS06S89F	PIPE STAND - FLANGE - 6in
9	2	25-PS06S92S	PIPE STAND - 304SS - 6in SADDLE
10	1	25-SU120900	SUMP - STEEL - 12in DIA x 9in DEEP
11	1	33-SP0000ZL	SUMP PUMP - ZOELLER M72
12	8.4 ft	40-PP0200S4	PIPE - 304SS SCH40 - 2in DIA (PIPE STANDS)
13	9.0 ft	40-PP0600D9	PIPE - DI - 6in DIA (2 x 3.5ft, 1 x 2ft) - TN 66 COATING
14	4	40-TT0H02S4	NIPPLE - 304SS - 0.5in DIA x 2in
15	2	41-BV0H00S6	BALL VALVE - 316SS - 0.5in
16	1	41-GV060HD0	GATE VALVE - 6in - HANDWHEEL
17	2	41-PV060GD0	PLUG VALVE - 6in - GEAR OP NUT
18	2	42-LW069999	CHECK VALVE - LEVER, WEIGHT & CUSHION - 6in
19	2	44-AD06RMAL	FLANGE ADAPTER - 6in - ALPHA
20	1	44-CL0404DM	CAM LOCK - ALUM - 4in - PLUGxMNPT
21	1	44-CL04ACAP	CAM LOCK - ALUM - 4in - SOCKET CAP
22	3	44-RG060STR	RETAINER GLAND - 6in - HEAVY DUTY
23	2	44-RJ069999	JOINT RESTRAINT - 6in - MEGALUG 1106
24	2	44-TS060H00	TAPPING SADDLE - 6in x .5in
25	2	45-FF060099	SPOOL - DI - 6in DIA x 9in - FLGxFLG - TN 66 COATING
26	1	45-FF060129	SPOOL - DI - 6in DIA x 12in - FLGxFLG - TN 66 COATING
27	1	45-FF060429	SPOOL - DI - 6in DIA x 42in - FLGxPE - TN 66 COATING
28	1	46-EL645MJ9	ELBOW - DI - 6in x 45deg - M3xM3 - TN 66 COATING
29	1	46-EL690DI9	ELBOW - DI - 6in x 90deg - FLGxFLG - TN 66 COATING
30	1	46-TE606DI9	TEE - DI - 6in - FLGxFLG - TN 66 COATING
31	1	46-YL606DI9	WYE - DI - 6in - FLGxFLG - TN 66 COATING
32	1	48-FL0604D9	FLANGE - DI - 6in - BLIND - 4" FNPT TAP - TN 66 COATING
33	12	49-GS060000	GASKET - FLANGE - 6in
34	31	51-BT060000	JOINT WRAP - 6in - BOA TAPE
35	43.5 ft	51-SE0101SL	JOINT SEALANT - 1in - CONSEAL CS-202
36	1	51-SECS1900	SEALANT - TUBE - CONSEAL CS-1900
37	1	59-KB080400	KOR-N-SEAL - 8in CORE - 4in thru 1.5in PIPE
38	3	59-KB1206DI	KOR-N-SEAL - 12in CORE x 6in DIPS PIPE
39	7.7 ft	70-PP1H00P4	PIPE - PVC SCH40 - 1.5in DIA
40	5.0 ft	70-PP1H00P8	PIPE - PVC SCH80 - 1.5in DIA
41	1	71-BV1H0CSP8	BALL VALVE - PVC SCH80 - 1.5in - SLIP
42	1	72-QC1HZUP8	CHECK VALVE - 1.5in - ZOELLER QUIET CHECK
43	1	74-AD1H008M	ADAPTER - PVC SCH80 - 1.5in - SLIP x MNPT
44	1	74-UN1H08SS	UNION - PVC SCH80 - 1.5in - SLIP
45	2	76-EL1H4580	ELBOW - PVC SCH80 - 1.5in x 45deg - SLIP
46	1	76-EL1H9040	ELBOW - PVC SCH40 - 1.5in x 90deg - SLIP
47	1	76-EL1H9080	ELBOW - PVC SCH80 - 1.5in x 90deg - SLIP
48	2	81-PG4H00HB	PRESSURE GAUGE - 4.5in DIA - 100#
49	2	83-GI0HF0HF	DIAPHRAGM SEAL - TYPE 101
50	1	84-BR00PX00	BRACKET - SWITCH INTRUSION ALARM
51	1	84-PX00AC00	SWITCH - ACTUATOR
52	1	84-PX00IT00	SWITCH - INTRUSION ALARM

COLOR LEGEND

NOTE: PRE-ASSEMBLY IS DONE AT ROMTEC UTILITIES' DISCRETION AND MAY CHANGE AT THE TIME OF PRODUCTION.

ALL MATERIALS SHOWN ON THIS SHEET WILL BE SUPPLIED BY ROMTEC UTILITIES AND DELIVERED TO THE SITE AFTER THE HOLE HAS BEEN EXCAVATED AND SHORED. THE CONTRACTOR SHALL SUPPLY A CRANE OF SUFFICIENT SIZE TO LOWER ALL THE CONCRETE PIECES INTO THE HOLE SAFELY. THE CONTRACTOR SHALL INSTALL THE WET WELL (AND VALVE VAULT AND METERING VAULT IF APPLICABLE). ROMTEC UTILITIES WILL PROVIDE A REPRESENTATIVE FOR TECHNICAL ASSISTANCE ON THE DAY OF INSTALLATION TO ANSWER ANY QUESTIONS THAT MAY ARISE. THE CONTRACTOR IS RESPONSIBLE FOR ALL PLUMBING AND ELECTRICAL CONNECTIONS AND INSTALLATION. ITEMS NOTED AS "BY OTHERS" WILL BE PROVIDED AND INSTALLED BY THE CONTRACTOR. ROMTEC UTILITIES WILL NOT INSTALL ANY OF THE COMPONENTS SHOWN ON THIS PAGE.

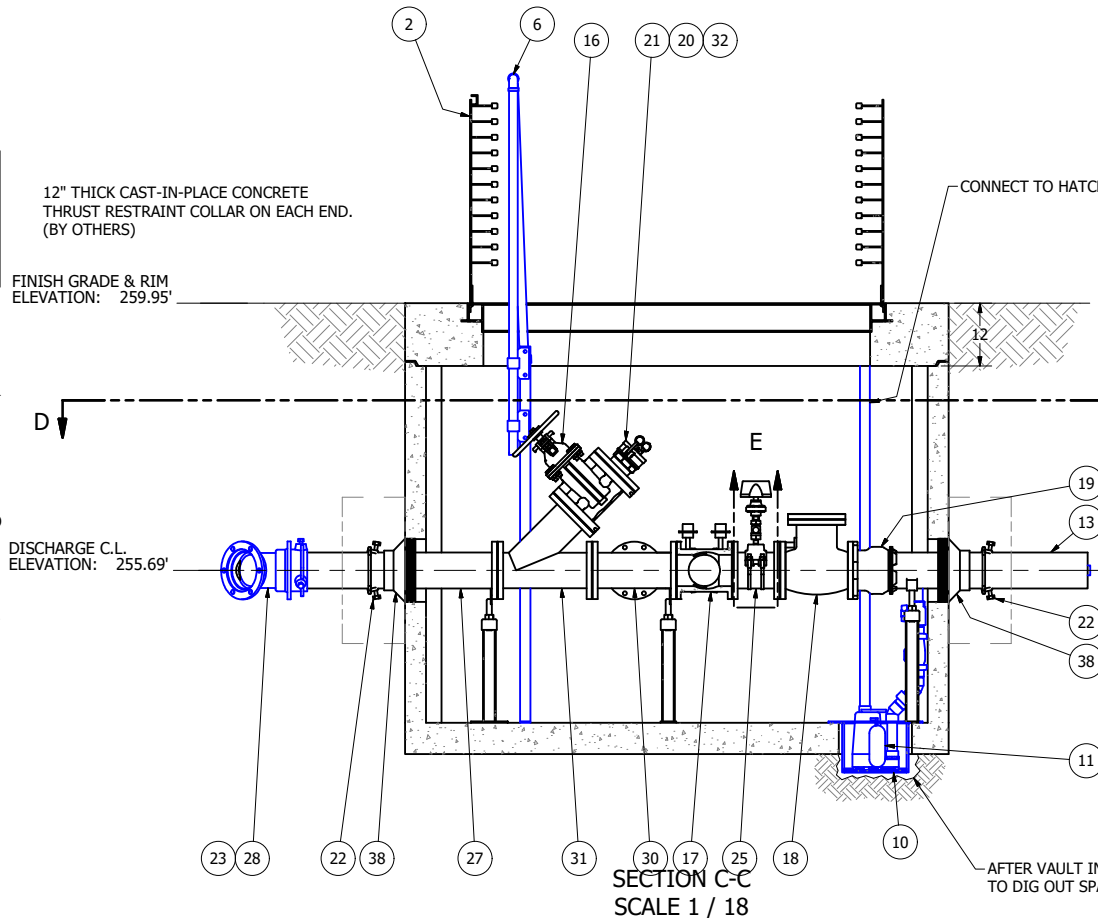


© 2020 ROMTEC INC. ALL RIGHTS RESERVED. THESE PLANS AND DRAWINGS MAY NOT BE REPRODUCED, ADAPTED, OR FURTHER DISTRIBUTED, AND NO COMPONENTS MAY BE CONSTRUCTED FROM THESE PLANS, WITHOUT WRITTEN PERMISSION OF ROMTEC, INC.

12" THICK CAST-IN-PLACE CONCRETE THRUST RESTRAINT COLLAR ON EACH END. (BY OTHERS)

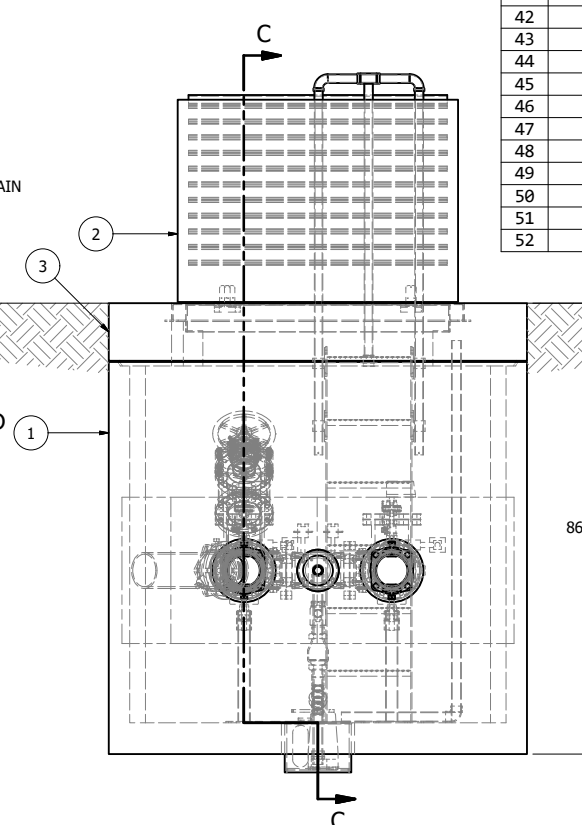
FINISH GRADE & RIM ELEVATION: 259.95'

DISCHARGE C.L. ELEVATION: 255.69'

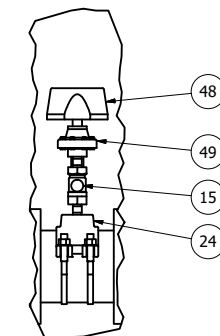


SECTION C-C
SCALE 1 / 18

AFTER VAULT INSTALLATION, CONTRACTOR TO DIG OUT SPACE AND INSTALL SUMP.



FRONT VIEW
SCALE 1 / 18



DETAIL E
SCALE 1 / 9

NOTE: CONTRACTOR TO SEAL ALL CONCRETE JOINTS AND PIPE PENETRATIONS WITH NON-SHRINK GROUT

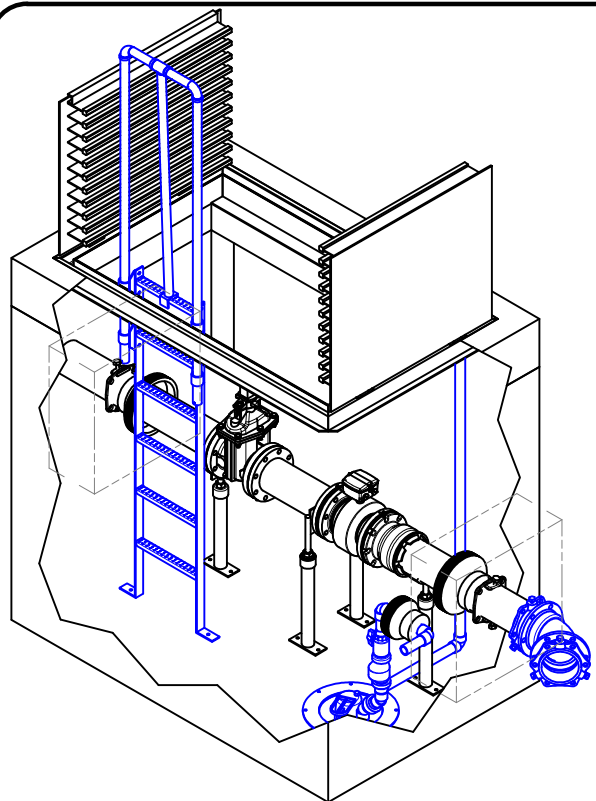
NOTE: ALL DIMENSIONS AND ELEVATIONS SHOWN ARE NOMINAL DIMENSIONS. IT IS THE RESPONSIBILITY OF THE ON-SITE CONTRACTOR OR ROMTEC UTILITIES CUSTOMER (NOT ROMTEC UTILITIES) TO VERIFY THE ACCURACY OF ANY CRITICAL DIMENSIONS OR ELEVATIONS PRIOR TO SETTING OR INSTALLING ANY EQUIPMENT.

AD	REVISION	DATE	DESCRIPTION
AD	REVISED VV & MV RIM ELEV.	2/19/2020	
KB	UPDATED ELEVATIONS; COMMENTS	2-12-2020	
KB	DESCRIPTION		
BY			

DATE	DATE
10-10-19	

ROMTEC UTILITIES
 18240 NORTH BANK ROAD
 ROSEBURG, OREGON 97470
 PHONE: (541) 496-9678
 WWW.ROMTECUTILITIES.COM

BLUEBERRY RIDGE
 PORT ORCHARD, WA
VALVE VAULT ASSEMBLY
 COMPONENT DRAWING
 MECHANICAL SHEET
 4 OF 5



ISO VIEW
SCALE 1 / 18

**577 VALVE VAULT
6" PIPING AND VALVES
W/ FLOW METER, SUMP PUMP
FOR DESIGN REVIEW**

COLOR LEGEND

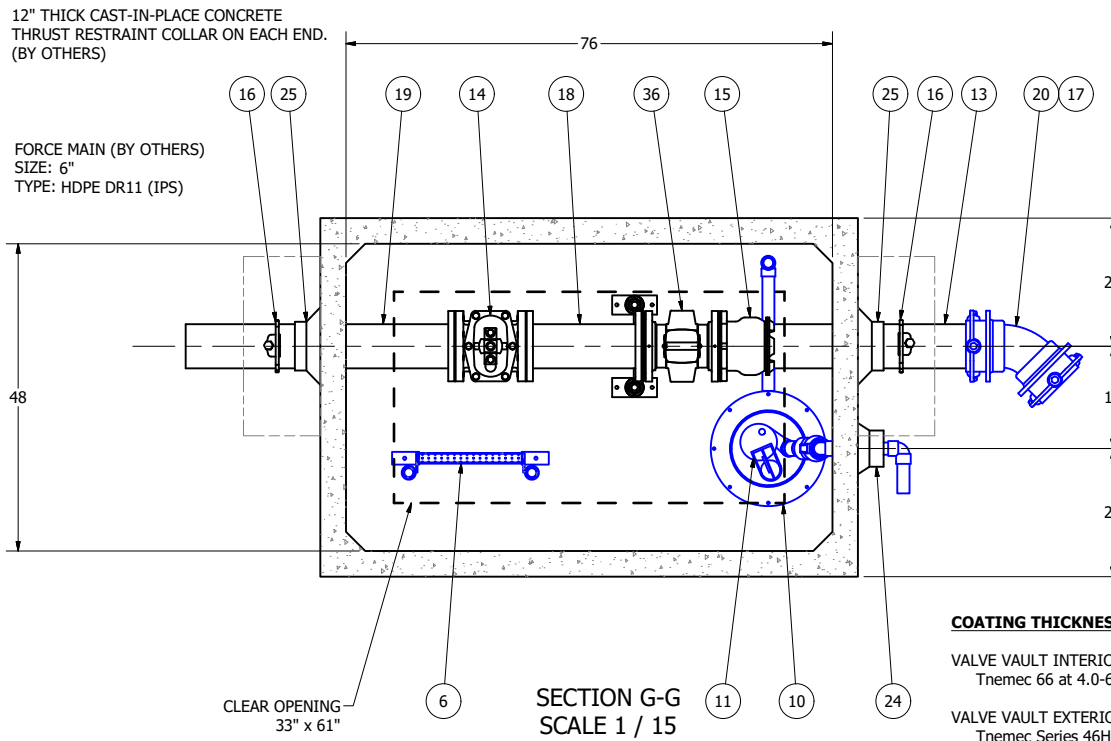
	MAJOR CONCRETE COMPONENTS WITH PRE-INSTALLED COMPONENTS.
	COMPONENTS PRE-ASSEMBLED TO THE EXTENT POSSIBLE AND WILL NEED TO BE FIELD INSTALLED.

NOTE: PRE-ASSEMBLY IS DONE AT ROMTEC UTILITIES' DISCRETION AND MAY CHANGE AT THE TIME OF PRODUCTION.

ALL MATERIALS SHOWN ON THIS SHEET WILL BE SUPPLIED BY ROMTEC UTILITIES AND DELIVERED TO THE SITE AFTER THE HOLE HAS BEEN EXCAVATED AND SHORED. THE CONTRACTOR SHALL SUPPLY A CRANE OF SUFFICIENT SIZE TO LOWER ALL THE CONCRETE PIECES INTO THE HOLE SAFELY. THE CONTRACTOR SHALL INSTALL THE WET WELL (AND VALVE VAULT AND METERING VAULT IF APPLICABLE). ROMTEC UTILITIES WILL PROVIDE A REPRESENTATIVE FOR TECHNICAL ASSISTANCE ON THE DAY OF INSTALLATION TO ANSWER ANY QUESTIONS THAT MAY ARISE. THE CONTRACTOR IS RESPONSIBLE FOR ALL PLUMBING AND ELECTRICAL CONNECTIONS AND INSTALLATION. ITEMS NOTED AS "BY OTHERS" WILL BE PROVIDED AND INSTALLED BY THE CONTRACTOR. ROMTEC UTILITIES WILL NOT INSTALL ANY OF THE COMPONENTS SHOWN ON THIS PAGE.



© 2020 ROMTEC INC. ALL RIGHTS RESERVED. THESE PLANS AND DRAWINGS MAY NOT BE REPRODUCED, ADAPTED, OR FURTHER DISTRIBUTED, AND NO COMPONENTS MAY BE CONSTRUCTED FROM THESE PLANS, WITHOUT WRITTEN PERMISSION OF ROMTEC, INC.



NOTE: TOP SLAB AND HATCH ARE H-20 OCCASIONAL TRAFFIC RATED

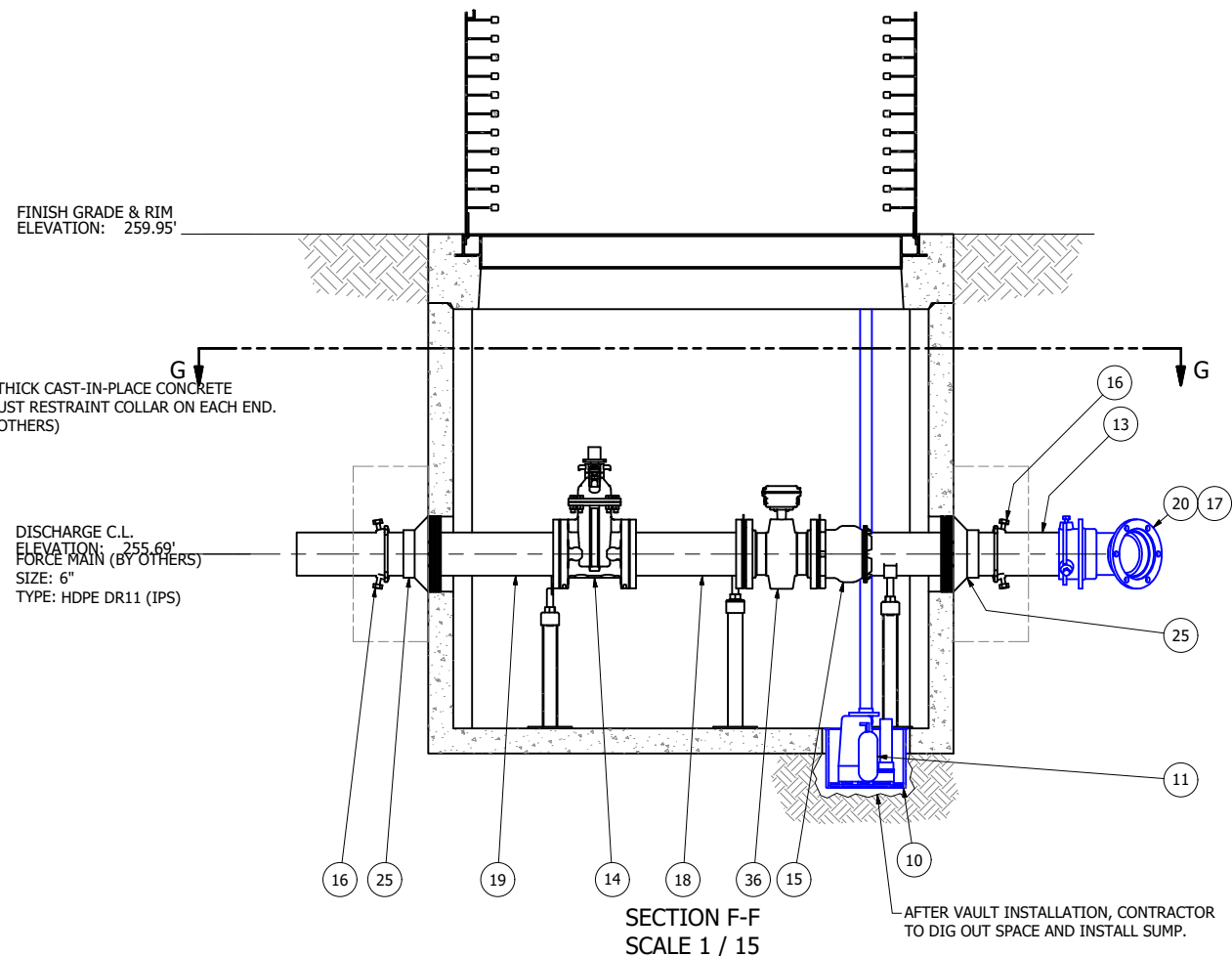
COATING THICKNESSES

VALVE VAULT INTERIOR:
Tnemec 66 at 4.0-6.0 mils DFT, Tnemec 73 at 3 - 5 mil DFT

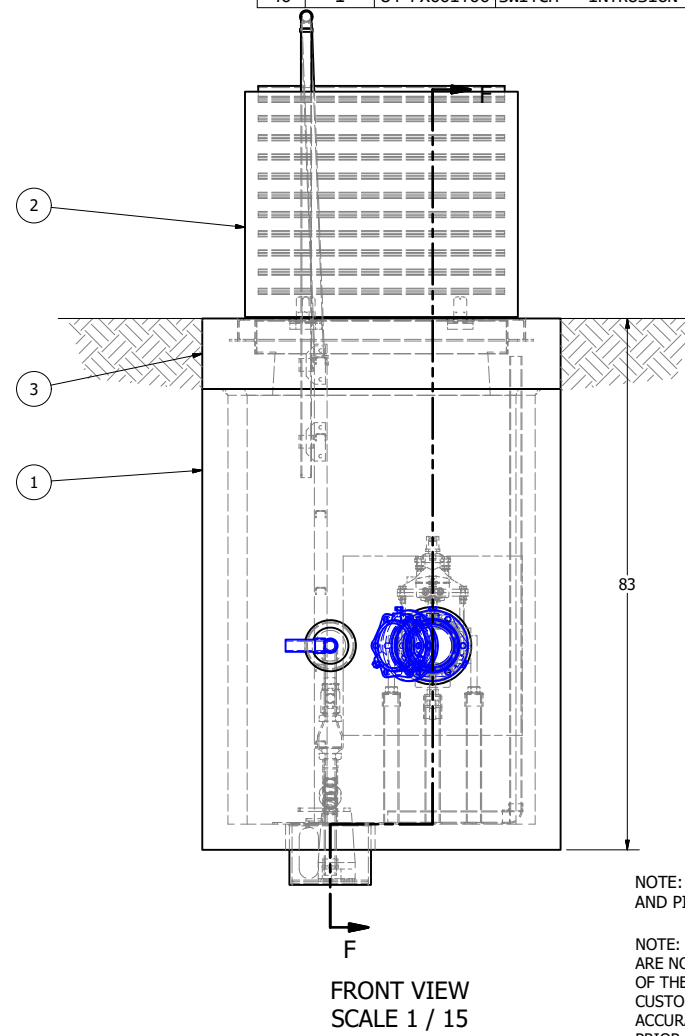
VALVE VAULT EXTERIOR:
Tnemec Series 46H-413 Hi Build Tnemec-tar, 16-20 mil DFT

DUCTILE IRON PIPE AND FITTINGS:
Surface prep to SSPC-SP-10 (white blast), one coat Tnemec 66, 3.0 - 5.0 mils DFT.

		PARTS LIST	
ITEM	QTY	STOCK NUMBER	DESCRIPTION
1	1	20-CB577000	BASE - VV - 577
2	1	23-HH5770HE	HATCH - VV - 577 - H20
3	1	24-CT577HD0	TOP SLAB - VV - 577 - H20
4	2	25-KY0000BR	BRACKET - VALVE KEY
5	1	25-KY0600GW	VALVE KEY - 6ft - GATE WRENCH
6	1	25-LD060300	LADDER - 6ft-3in
7	4	25-PS00BAPL	PIPE STAND BASE PLATE - 304SS
8	3	25-PS06S89F	PIPE STAND - FLANGE - 6in
9	1	25-PS06S92S	PIPE STAND - 304SS - 6in SADDLE
10	1	25-SU120900	SUMP - STEEL - 12in DIA x 9in DEEP
11	1	33-SP0000ZL	SUMP PUMP - ZOELLER M72
12	6.5 ft	40-PP0200S4	PIPE - 304SS SCH40 - 2in DIA (PIPE STANDS)
13	3.5 ft	40-PP0600D9	PIPE - DI - 6in DIA - TN 66 COATING
14	1	41-GV060ND0	GATE VALVE - 6in - OP NUT
15	1	44-AD06RMAL	FLANGE ADAPTER - 6in - ALPHA
16	2	44-RG060STR	RETAINER GLAND - 6in - HEAVY DUTY
17	2	44-RJ069999	JOINT RESTRAINT - 6in - MEGALUG 1106
18	1	45-FF060189	SPOOL - DI - 6in DIA x 18in - FLGxFLG - TN 66 COATING
19	1	45-FP060429	SPOOL - DI - 6in DIA x 42in - FLGxPE - TN 66 COATING
20	1	46-EL645MJ9	ELBOW - DI - 6in x 45deg - M3xM3 - TN 66 COATING
21	5	49-GS060000	GASKET - FLANGE - 6in
22	24 ft	51-BT060000	JOINT WRAP - 6in - BOA TAPE
23	29 ft	51-SE0101SL	JOINT SEALANT - 1in - CONSEAL CS-202
24	1	59-KB080400	KOR-N-SEAL - 8in CORE - 4in thru 1.5in PIPE
25	2	59-KB1206DI	KOR-N-SEAL - 12in CORE x 6in DIPS PIPE
26	7.5 ft	70-PP1H00P4	PIPE - PVC SCH40 - 1.5in DIA
27	5.5 ft	70-PP1H00P8	PIPE - PVC SCH80 - 1.5in DIA
28	1	71-BV1HCSP8	BALL VALVE - PVC SCH80 - 1.5in - SLIP
29	1	72-QC1HZUP8	CHECK VALVE - 1.5in - ZOELLER QUIET CHECK
30	1	74-AD1H008M	ADAPTER - PVC SCH80 - 1.5in - SLIP x MNPT
31	1	74-UN1H08SS	UNION - PVC SCH80 - 1.5in - SLIP
32	2	76-EL1H4580	ELBOW - PVC SCH80 - 1.5in x 45deg - SLIP
33	1	76-EL1H9040	ELBOW - PVC SCH40 - 1.5in x 90deg - SLIP
34	1	76-EL1H9080	ELBOW - PVC SCH80 - 1.5in x 90deg - SLIP
35	1	76-EL1H9080	ELBOW - PVC SCH80 - 1.5in x 90deg - SLIP
36	1	82-FM0651SI	FLOWMETER - 6in - SIEMENS - 5100W
37	2	82-GR060000	GROUNDING RING - 6in
38	1	84-BR00PX00	BRACKET - SWITCH INTRUSION ALARM
39	1	84-PX00AC00	SWITCH - ACTUATOR
40	1	84-PX00IT00	SWITCH - INTRUSION ALARM



AFTER VAULT INSTALLATION, CONTRACTOR TO DIG OUT SPACE AND INSTALL SUMP.



NOTE: CONTRACTOR TO SEAL ALL CONCRETE JOINTS AND PIPE PENETRATIONS WITH NON-SHRINK GROUT

NOTE: ALL DIMENSIONS AND ELEVATIONS SHOWN ARE NOMINAL DIMENSIONS. IT IS THE RESPONSIBILITY OF THE ON-SITE CONTRACTOR OR ROMTEC UTILITIES CUSTOMER (NOT ROMTEC UTILITIES) TO VERIFY THE ACCURACY OF ANY CRITICAL DIMENSIONS OR ELEVATIONS PRIOR TO SETTING OR INSTALLING ANY EQUIPMENT.



BLUEBERRY RIDGE
PORT ORCHARD, WA
METER VAULT ASSEMBLY
COMPONENT DRAWING

VERIFY SCALE: 0 1" (AS SHOWN) 1/8" (AS SHOWN) 1/4" (AS SHOWN) 3/8" (AS SHOWN) 1/2" (AS SHOWN) 3/4" (AS SHOWN) 1" (AS SHOWN)

REV	DATE	DESCRIPTION
2	2/19/2020	REVISED VV & MV RIM ELEV.
1	2-12-2020	UPDATED ELEVATIONS; COMMENTS

DATE: 10-10-19

AD	BY	REVISION HISTORY