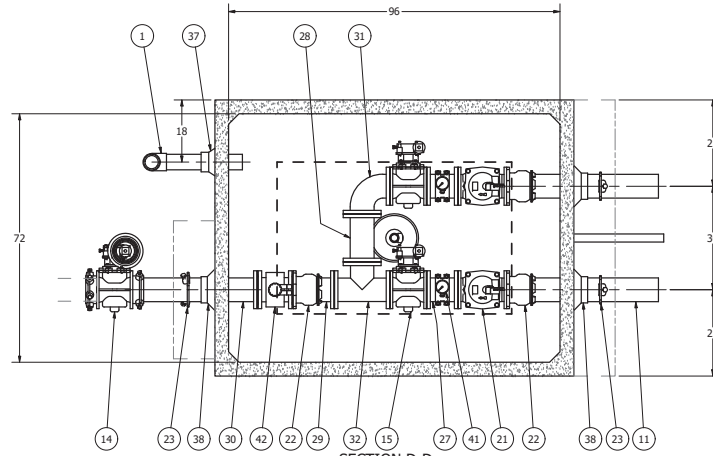


ISO VIEW
SCALE 1 / 24

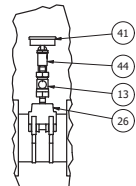
**687 VALVE VAULT
6" PIPING AND VALVES
with FLOW METER**

AS BUILT



SECTION D-D
SCALE 1 / 18

**NOTE: TOP SLAB AND HATCH ARE
H-20 OCCASIONAL TRAFFIC RATED**



DETAIL E
SCALE 1 / 9

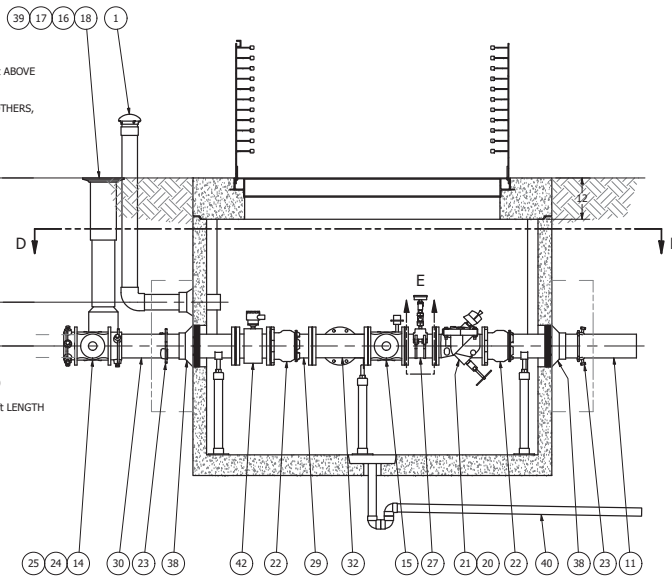
VENT OUTLET MUST BE 1ft ABOVE
THE 100YR FLOOD PLAIN.
VENT LOCATION TBD.
(ADDITIONAL PIPING BY OTHERS,
NOT ROMTEC UTILITIES)

FINISH GRADE & RIM
ELEVATION: 735.56'

VENT C.L.
ELEVATION: 732.56'

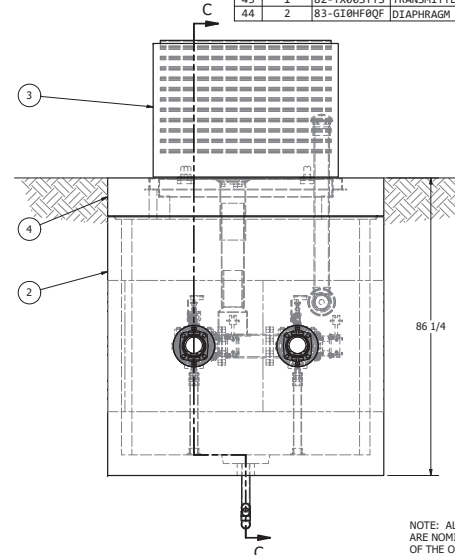
DISCHARGE C.L.
ELEVATION: 731.50'

FORCE MAIN (BY OTHERS)
SIZE: 6"
TYPE: PVC C900 DR18, 93ft LENGTH



SECTION C-C
SCALE 1 / 18

		PARTS LIST	
ITEM	QTY	STOCK NUMBER	DESCRIPTION
1	1	18-VT000000	VENT ASSEMBLY - 4in MUSHROOM CAP VENT
2	1	20-CB687000	BASE - VV - 687
3	1	23-HH687000	HATCH - VV - 687 - H20
4	1	24-CT687000	TOP SLAB - VV - 687 - H20
5	2	25-KY000000	BRACKET - VALVE KEY
6	1	25-KY000000	VALVE KEY - SPECIAL SHIVEL & EXTENDABLE
7	2	25-PS06589F	PIPE STAND - FLANGE - 6in
8	3	25-PS06592S	PIPE STAND - 304SS - 6in SADDLE
9	5	25-PS060000	PIPE STAND BASE - 304SS - 2in - 2 BOLT
10	9.4	40-PP0200S4	PIPE - 304SS SCH40 - 2in DIA (PIPE STANDS)
11	7.0	40-PP0600D0	PIPE - DI - 6in DIA (2 x 3.5ft)
12	4	40-TT0025S6	NIPPLE - 316SS - 0.5in DIA x 2in
13	2	41-BV0000S6	BALL VALVE - 316SS - 0.5in
14	1	41-PV0000D0	PLUG VALVE - 6in - GEARED OP NUT - BURIED
15	2	41-PV0000D0	PLUG VALVE - 6in - GEAR OP NUT
16	1	41-VB0000AS	VALVE BOX - BASE
17	1	41-VB0000LID	VALVE BOX - LID
18	1	41-VB0000TOP	VALVE BOX - TOP
19	1	42-AC0600BF	BACKFLOW ACTUATOR - 6in
20	2	42-MI034600	MECHANICAL INDICATOR - 3in THRU 6in
21	2	42-SF0600D0	CHECK VALVE - SWING FLEX - 6in
22	3	44-AD06RMAL	FLANGE ADAPTER - 6in - ALPHA
23	3	44-RG0605TR	RETAINER GLAND - 6in - HEAVY DUTY
24	1	44-RJ0600S0	JOINT RESTRAINT - 6in
25	1	44-RJ0600S0	JOINT RESTRAINT - 6in - PVC
26	2	44-TS0600H0	TAPPING SADDLE - 6in x .5in
27	2	45-FF060090	SPOOL - DI - 6in DIA x 9in - FLGXFLG
28	1	45-FF061330	SPOOL - DI - 6in DIA x 13.75in - FLGXFLG
29	1	45-FF060000	SPOOL - DI - 6in DIA x 10in - FLGXPE
30	1	45-FF060000	SPOOL - DI - 6in DIA x 36in - FLGXPE
31	1	46-EL0690DI	ELBOW - DI - 6in x 90deg - FLGXFLG
32	1	46-TE0606DI	TEE - DI - 6in - FLGXFLG
33	2	48-PL0000HX	PLUG - 304SS - .25in NPT - HEX SOCKET
34	12	49-GS060000	GASKET - FLANGE - 6in
35	31	51-BT060000	JOINT WRAP - 6in - BOA TAPE
36	43.5	51-SE0101SL	JOINT SEALANT - 1in - CONSEAL CS-202
37	1	59-KB000400	KOR-N-SEAL - 8in CORE - 4in thru 1.5in PIPE
38	3	59-KB1206DI	KOR-N-SEAL - 12in CORE x 6in DIPS PIPE
39	2.5	70-PP0600DR	PIPE - PVC SDR35 - 6in DIA
40	1	80-DR000000	DRAIN ASSEMBLY - 2in PVC SCH40
41	2	81-PG3000Q0	PRESSURE GAUGE - 3.5in DIA x .25in MNPT BACK 30#
42	1	82-FT065TTS	FLOWTURBINE - 6in - SEPARATE TYPE - TOSHIBA
43	1	82-TX065TTS	TRANSMITTER - SEPARATE TYPE - TOSHIBA
44	2	83-GI06F00F	DIAPHRAGM SEAL - 0.5in FNPT x 0.25in FNPT



FRONT VIEW
SCALE 1 / 18

NOTE: CONDUIT TO CONTROL PANEL (BY OTHERS)
MINIMUM: (1) FOR FLOW METER

NOTE: ALL DIMENSIONS AND ELEVATIONS SHOWN
ARE NOMINAL DIMENSIONS. IT IS THE RESPONSIBILITY
OF THE ON-SITE CONTRACTOR OR ROMTEC UTILITIES
CUSTOMER (NOT ROMTEC UTILITIES) TO VERIFY THE
ACCURACY OF ANY CRITICAL DIMENSIONS OR ELEVATIONS
PRIOR TO SETTING OR INSTALLING ANY EQUIPMENT.

ALL MATERIALS SHOWN ON THIS SHEET WILL BE
SUPPLIED BY ROMTEC UTILITIES AND DELIVERED TO
THE SITE AFTER THE HOLE HAS BEEN EXCAVATED
AND SHORED. THE CONTRACTOR SHALL SUPPLY A
CRANE OF SUFFICIENT SIZE TO LOWER ALL THE
CONCRETE PIECES INTO THE HOLE SAFELY. THE
CONTRACTOR SHALL INSTALL THE WET WELL
(AND VALVE VAULT AND METERING VAULT IF
APPLICABLE). ROMTEC UTILITIES WILL PROVIDE A
REPRESENTATIVE FOR TECHNICAL ASSISTANCE ON
THE DAY OF INSTALLATION TO ANSWER ANY QUESTIONS
THAT MAY ARISE. THE CONTRACTOR IS RESPONSIBLE
FOR ALL PLUMBING AND ELECTRICAL CONNECTIONS
AND INSTALLATION. ITEMS NOTED AS "BY OTHERS"
WILL BE PROVIDED AND INSTALLED BY THE CONTRACTOR.
ROMTEC UTILITIES WILL NOT INSTALL ANY OF THE
COMPONENTS SHOWN ON THIS PAGE.

© 2019 ROMTEC INC. ALL RIGHTS RESERVED. THESE
PLANS AND DRAWINGS MAY NOT BE REPRODUCED,
ADAPTED, OR FURTHER DISTRIBUTED, AND NO
COMPONENTS MAY BE CONSTRUCTED FROM THESE
PLANS, WITHOUT WRITTEN PERMISSION OF ROMTEC, INC.

REV	DATE	DESCRIPTION	BY
1			
2			
3			
4			
5			
6			
7			
8	3/15/2021	AS BUILT, ADJUSTED W/LET ELEVATION	AD
9	11/24/2020	REVISED BACK UP LEVEL SETTINGS	AD
10		LAUNCH DOLS	AD
11	7/15/2020	UPDATED CONCRETE PRE-CASTER	AD
12	6/17/2020	REVISED PRE-CASTER COMPONENT CORES	AD
13	10/22/2019	REVISION TO MATCH PRE-CASTER COMPONENT CORES	AS
14		ADDED NORTH ARROW AND VENT TO VALVE VAULT	AD
15	9-25-19	DESCRIPTION	AD
16		REV	AD
17		DATE	AD
18		REV	AD
19		DATE	AD
20		REV	AD
21		DATE	AD
22		REV	AD
23		DATE	AD
24		REV	AD
25		DATE	AD
26		REV	AD
27		DATE	AD
28		REV	AD
29		DATE	AD
30		REV	AD
31		DATE	AD
32		REV	AD
33		DATE	AD
34		REV	AD
35		DATE	AD
36		REV	AD
37		DATE	AD
38		REV	AD
39		DATE	AD
40		REV	AD
41		DATE	AD
42		REV	AD
43		DATE	AD
44		REV	AD

ROMTEC UTILITIES
18240 NORTH BANK ROAD
ROSEBURG, OREGON 97470
PHONE: (503) 995-9678
WWW.ROMTECUTILITIES.COM

DOLCE VITA AT GRANBURY
GRANBURY, TX
**VALVE VAULT ASSEMBLY
COMPONENT DRAWING**