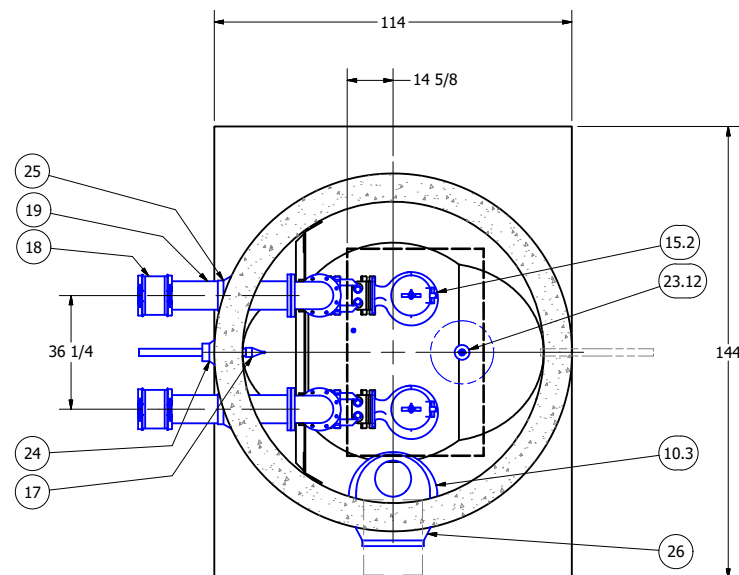


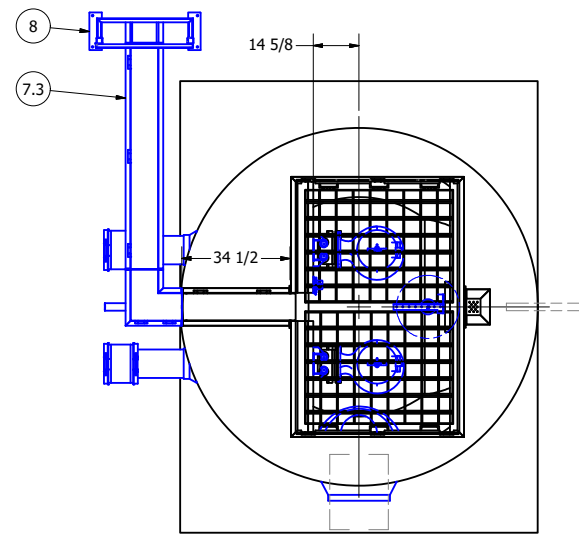
ISO VIEW
SCALE 1 / 40

**8" DIAMETER WET WELL
8" DISCHARGE PIPING
DUPLEX FLYGT PUMPS
8" 810 VALVE VAULTS**

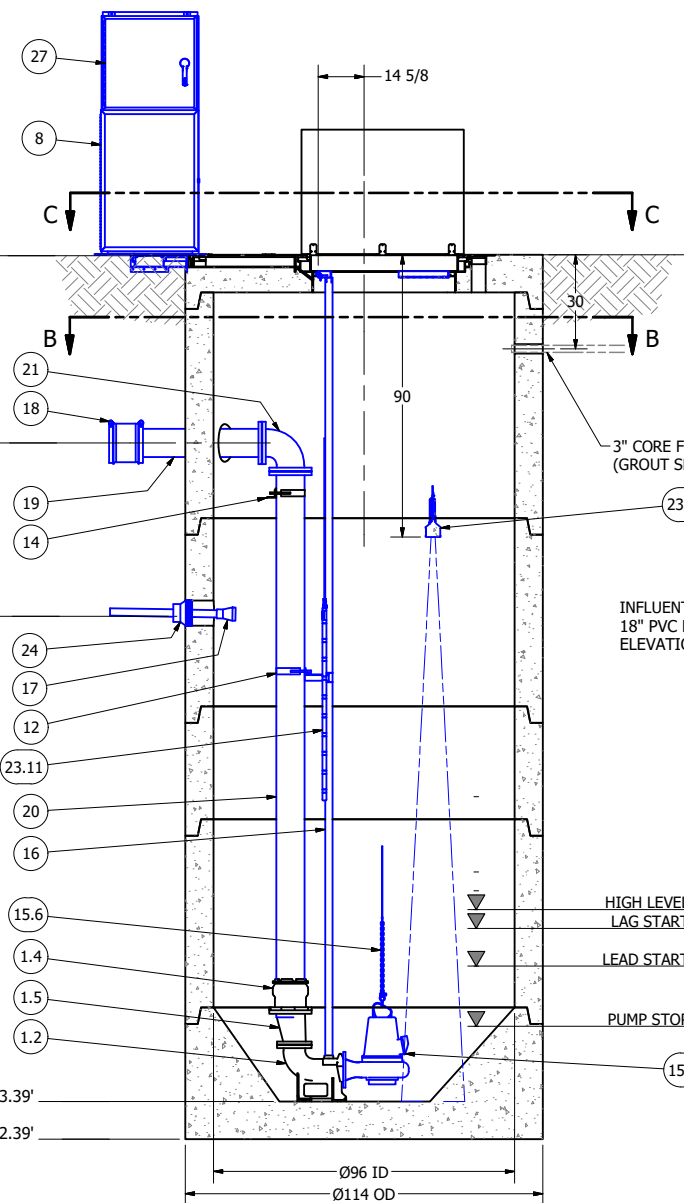
FOR PRODUCTION



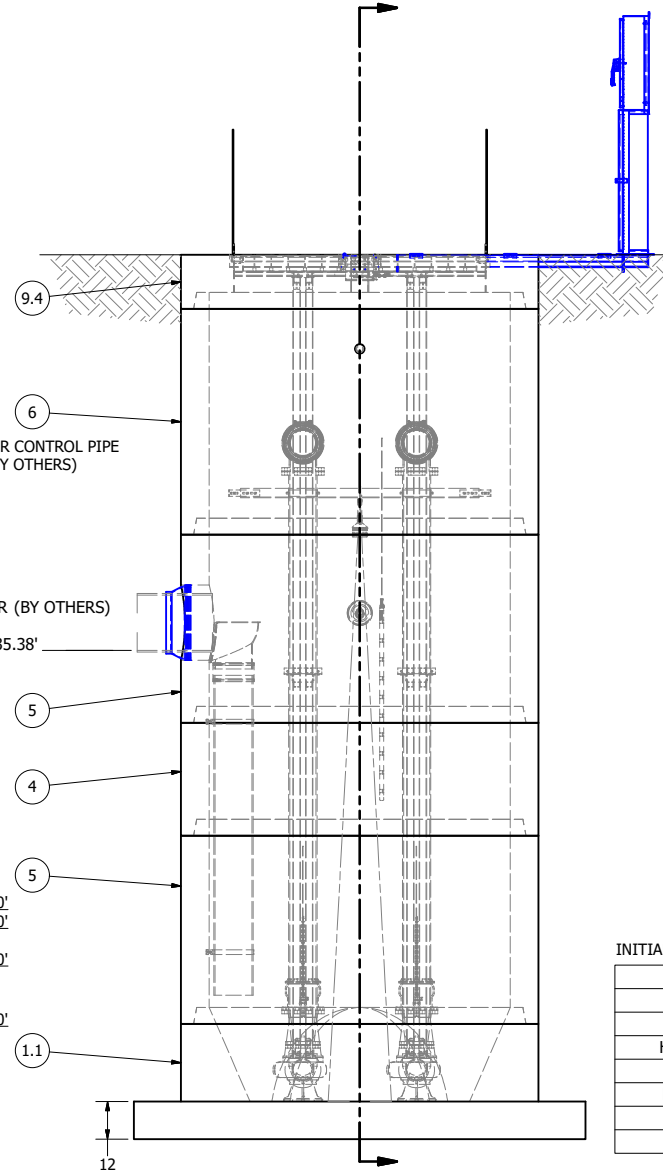
SECTION B-B
SCALE 1 / 30



SECTION C-C
SCALE 1 / 30



SECTION A-A
SCALE 1 / 30



FRONT VIEW
SCALE 1 / 30

PARTS LIST			
ITEM	QTY	STOCK NUMBER	DESCRIPTION
1	1	10-CB000000	BASE SLAB ASSEMBLY
1.1	1	10-CB0000RU	BASE - WW - 8ft DIA - RU DESIGN
1.2	2	31-EL0600FL	DISCHARGE ELBOW - 6in - FLYGT
1.3	2	31-HW00AKS6	ANCHOR KIT - 316SS - DISCHARGE ELBOW
1.4	2	44-AD08RMA	FLANGE ADAPTER - 8in - ALPHA
1.5	2	48-RD0806DE	REDUCER - DI - ECCENTRIC - 8in X 6in
1.6	2	49-GS060000	GASKET - FLANGE - 6in
2	1	11-LC0800EX	COATING - EXTERIOR - 8ft DIA
3	1	11-LC0800IN	COATING - INTERIOR - 8ft DIA
4	1	12-CR083600	BARREL - 8ft DIA x 3ft H
5	2	12-CR086000	BARREL - 8ft DIA x 5ft H
6	1	12-CR087200	BARREL - 8ft DIA x 6ft H
7	1	13-CA000000	CABLE TRAY EXTENSION ASSEMBLY
7.1	1	13-CA099000	CABLE TRAY CORNER - 9in x 90deg
7.2	1	13-CAEC0908	CABLE TRAY END CAP - 9in x 8in LONG
7.3	1	13-CAEX0972	CABLE TRAY EXTENSION - 9in x 6ft
8	1	13-DS3030S5	DISCONNECT STAND - 304SS
9	1	14-CT000000	TOP SLAB ASSEMBLY
9.1	1	13-CA080000	CABLE TRAY - 8ft
9.2	1	13-HH08HDCV	HATCH - H20 - 8ft - DUPLEX
9.3	1	13-VT0000AL	VENT - ALUMINUM - FLUSH
9.4	1	14-CT08HDD0	TOP SLAB - 8ft DIA - H20 - DUPLEX
9.5	1	84-PX00AC00	SWITCH - ACTUATOR
9.6	1	84-PX00IT00	SWITCH - INTRUSION ALARM
10	1	15-DB000000	DROP BOWL ASSEMBLY - 18in INLET
10.1	2	15-BR12S535	BRACKET - PIPE - 12in - S535 - SDR35
10.2	1	15-CP120000	COUPLING - FERNCO - 12in
10.3	1	15-DB240012	DROP BOWL - 24in INLET x 12in OUTLET
10.4	4	15-HMDBANCH	ANCHOR - DROP BOWL
10.5	8.5 ft	70-PP1200DR	PIPE - PVC SDR35 - 12in DIA
11	2	17-AC38000B	BOLT KIT - UPPER GUIDE BAR BRACKET
12	2	17-IG02S4FL	BRACKET - 316SS - INTERMEDIATE GUIDE BAR
13	2	17-UG0200FL	BRACKET - 316SS - UPPER GUIDE BAR
14	1	18-BR999999	DISCHARGE SUPPORT ASSEMBLY
15	1	30-PU000000	PUMP SHIPPING CRATE
15.1	1	30-MFVFLYGT	MIX FLUSH VALVE - FLYGT
15.2	3	30-PU0000FL	PUMP - FLYGT NP3127MT
15.3	3	32-BS0H00S5	BOW SHACKLE - 316SS - 1-2in
15.4	3	32-BS3800S5	BOW SHACKLE - 316SS - 3-8in
15.5	3	32-CGSS000E	CABLE SUPPORT GRIP - 304SS - 1in-1.24in
15.6	6.0 ft	32-PL9320S6	CHAIN - 316SS - 9-32in S5
15.7	1	32-PLGE0000	GRIP EYE UNIT
15.8	3	32-PLLSAPOL	LIFTING SLING ASSEMBLY - POLY (22.5ft)
16	82.0 ft	40-PP0200S4	PIPE - 304SS SCH40 - 2in DIA (4 x 10ft, 4 x 10.5ft)
17	1	42-TF020000	CHECK VALVE - TIDEFLEX - 2in
18	2	44-CP080AD0	COUPLING - 8in - ROMAC ALPHA
19	2	45-FP080420	SPOOL - DI - 8in DIA x 42in - FLGxPE
20	2	45-FP081740	SPOOL - DI - 8in DIA x 174in - FLGxPE
21	2	46-EL0890DI	ELBOW - DI - 8in x 90deg - FLGxFLG
22	4	49-GS080000	GASKET - FLANGE - 8in
23	1	50-AC000000	WELL SHIPPING CRATE
23.1	4	12-GS000001	BARREL - GASKET
23.2	1	13-KY000000	HATCH KEY
23.3	4	18-AC00CH00	CABLE HANGER ASSEMBLY - 316SS
23.4	4	18-HD080000	LIFTING CLUTCH - 8 TON
23.5	1	51-AC00NSTB	NEVER SIEZE - TUBE
23.6	150 ft	51-BT060000	JOINT WRAP - 6in - BOA TAPE
23.7	159.5 ft	51-SE0101SL	JOINT SEALANT - 1in - CONSEAL CS-202
23.8	1	62-BR00PB00	BRACKET - PROBE MOUNTING
23.9	1	80-BR00UT00	BRACKET - ULTRASONIC TRANSDUCER
23.10	1	80-BR00UTHB	BRACKET - HANGING BRACKET - 16in - SS
23.11	1	80-PB6150MP	PROBE - LIQUID LEVEL - LP-61-10-50 - MPE
23.12	1	80-UT0015XP	ULTRASONIC TRANSDUCER - XPS-15
24	1	59-KB080400	KOR-N-SEAL - 8in CORE - 4in thru 1.5in PIPE
25	2	59-KB1208DI	KOR-N-SEAL - 12in CORE x 8in PIPE
26	1	59-KB241800	KOR-N-SEAL - 24in CORE x 18in PIPE
27	1	61-EP1C00DC	DISCONNECT PANEL - 51-100FLA
28	3.0 ft	70-PP0200P4	PIPE - PVC SCH40 - 2in DIA

INITIAL PHASE - NP3127MT 10HP

PRIMARY SENSOR ELEVATION TABLE	
DESCRIPTION	ELEVATION
INFLUENT INVERT	235.38'
HIGH LEVEL ALARM	228.50'
LAG PUMP START	228.00'
LEAD PUMP START	227.00'
PUMP STOP	225.40'
WELL FLOOR	223.39'

FUTURE PHASE - NP3171MT 25HP

MISC. ELEVATION TABLE	
DESCRIPTION	ELEVATION
HIGH LEVEL ALARM	232.00'
LAG PUMP START	231.50'
LEAD PUMP START	230.50'
PUMP STOP	225.90'

NOTE: CONTRACTOR TO SEAL ALL CONCRETE JOINTS AND PIPE PENETRATIONS WITH NON-SHRINK GROUT

NOTE: ALL DIMENSIONS AND ELEVATIONS SHOWN ARE NOMINAL DIMENSIONS. IT IS THE RESPONSIBILITY OF THE ON-SITE CONTRACTOR OR ROMTEC UTILITIES CUSTOMER (NOT ROMTEC UTILITIES) TO VERIFY THE ACCURACY OF ANY CRITICAL DIMENSIONS OR ELEVATIONS PRIOR TO SETTING OR INSTALLING ANY EQUIPMENT.

COLOR LEGEND

- MAJOR CONCRETE COMPONENTS WITH PRE-INSTALLED COMPONENTS.
- COMPONENTS PRE-ASSEMBLED TO THE EXTENT POSSIBLE AND WILL NEED TO BE FIELD INSTALLED.

NOTE: PRE-ASSEMBLY IS DONE AT ROMTEC UTILITIES' DISCRETION AND MAY CHANGE AT THE TIME OF PRODUCTION.

ALL MATERIALS SHOWN ON THIS SHEET WILL BE SUPPLIED BY ROMTEC UTILITIES AND DELIVERED TO THE SITE AFTER THE HOLE HAS BEEN EXCAVATED AND SHORED. THE CONTRACTOR SHALL SUPPLY A CRANE OF SUFFICIENT SIZE TO LOWER ALL THE CONCRETE PIECES INTO THE HOLE SAFELY. THE CONTRACTOR SHALL INSTALL THE WET WELL (AND VALVE VAULT AND METERING VAULT IF APPLICABLE). ROMTEC UTILITIES WILL PROVIDE A REPRESENTATIVE FOR TECHNICAL ASSISTANCE ON THE DAY OF INSTALLATION TO ANSWER ANY QUESTIONS THAT MAY ARISE. THE CONTRACTOR IS RESPONSIBLE FOR ALL PLUMBING AND ELECTRICAL CONNECTIONS AND INSTALLATION. ITEMS NOTED AS "BY OTHERS" WILL BE PROVIDED AND INSTALLED BY THE CONTRACTOR. ROMTEC UTILITIES WILL NOT INSTALL ANY OF THE COMPONENTS SHOWN ON THIS PAGE.

© 2019 ROMTEC INC. ALL RIGHTS RESERVED. THESE PLANS AND DRAWINGS MAY NOT BE REPRODUCED, ADAPTED, OR FURTHER DISTRIBUTED, AND NO COMPONENTS MAY BE CONSTRUCTED FROM THESE PLANS, WITHOUT WRITTEN PERMISSION OF ROMTEC, INC.

REV	DATE	DESCRIPTION	BY
1	5-6-19	REVISED ELEVATIONS	AD
2	9/25/2019	REVISED WET WELL DEPTH AND PUMPS PER REV 1 ELEVATIONS	AD
3	10/28/2019	PER APPROVED PLANS	KB
4	10/28/2019	PRODUCTION LAUNCH	KB
5	10/30/2019	ADJUSTED BARREL HEIGHTS	KB

VERITY SCALE	0	1"
DATE:	04/26/19	

ROMTEC UTILITIES
18240 NORTH BANK ROAD
ROSEBURG, OREGON 97470
PHONE: (541) 496-9678
WWW.ROMTECUTILITIES.COM

SETON SUBDIVISION
RIDGEFIELD, WA
WET WELL ASSEMBLY
COMPONENT DRAWING
MECHANICAL SHEET
3 OF 6