

NOTE:  
CONDUIT TO CONTROL PANEL (BY OTHERS)  
MINIMUM:  
(4) FOR POWER  
(1) FOR LEVEL SENSING

NOTE: TOP SLAB AND HATCH ARE  
H-20 OCCASIONAL TRAFFIC RATED

PRIMARY SENSOR ELEVATION TABLE		
DESCRIPTION	ELEVATION	Δ
INFLUENT INVERT	4712.55'	6.95'
HIGH LEVEL ALARM	4705.60'	0.50'
LAG PUMP START	4705.10'	0.50'
LEAD PUMP START	4704.60'	0.50'
PUMP STOP	4704.10'	2.00'
WELL FLOOR	4702.10'	

MISC. ELEVATION TABLE	
DESCRIPTION	ELEVATION
BACK UP PUMPS START	4706.60'
BACK UP PUMPS STOP	4706.10'
BACK UP HIGH LEVEL ALARM	4705.85'

PARTS LIST			
ITEM	QTY	STOCK NUMBER	DESCRIPTION
1	1	10-CB000000	BASE SLAB ASSEMBLY
1.1	1	10-CB1000CP	BASE - WW - 10ft DIA - FLAT - 12ft x 12ft
1.2	1	10-GR100000	GROUT RING - 10ft DIA
1.3	1	12-CR102400	BARREL - 10ft DIA x 2ft H
1.4	2	31-EL030HFP	DISCHARGE ELBOW - 3in HORIZ. - FLOPRO
1.6	2	31-HW00AKS6	ANCHOR KIT - 316SS - DISCHARGE ELBOW
1.7	2	44-AD04RMAL	FLANGE ADAPTER - 4in - ALPHA
1.9	2	48-RD403DEP	REDUCER - DI - 4in x 3in - ECCENTRIC - P401
1.11	2	49-GS030000	GASKET - FLANGE - 3in
2	1	12-CR104.62	BARREL - 10ft DIA x 4.62ft H
3	1	12-CR107200	BARREL - 10ft DIA x 6ft H
4	1	12-CR108400	BARREL - 10ft DIA x 7ft H
5	1	14-CT000000	TOP SLAB ASSEMBLY
5.1	1	13-CAEX0945	CABLE TRAY EXTENSION - 9in x 45in
5.2	1	13-DS3636SS	DISCONNECT STAND - SS - 36in X 36in X 12in
5.3	1	13-HH10HTE	HATCH - H20 - 10ft - TRIPLEX
5.4	1	13-VT0000AL	VENT - ALUMINUM - FLUSH
5.5	1	14-CT10HDT0	TOP SLAB - 10ft DIA - H20 - TRIPLEX
6	2	15-BR10SS35	BRACKET - PIPE - 10in - SS35 - SDR35 - 316SS
7	1	15-CP100000	COUPLING - FERNCO - 10in
8	1	15-DB101212	DROP BOWL - 10in thru 12in INLET x 10in OUTLET - 9ft - 12ft WET WELL
9	6	15-HWDBANCH	ANCHOR - DROP BOWL - 316SS
10	2	17-AC38000B	BOLT KIT - UPPER GUIDE BAR BRACKET
12	2	17-IG1QS4CN	BRACKET - 316SS - INTERMEDIATE GUIDE - 1.25in
14	2	17-UG1QS4KE	BRACKET - 316SS - UPPER GUIDE BAR - 1.25in
15	1	18-BR000000	DISCHARGE PIPE BRACKET - 10ft WW - 4in PIPE - 316SS
16	1	18-BR04SWLO	STILLING WELL - LOWER SUPPORT - 4in - 316SS
17	1	18-BR04SWUP	STILLING WELL - UPPER SUPPORT - 4in - 316SS
18	1	30-PU000000	PUMP SHIPPING CRATE
18.1	2	30-MFVFLYGT	MIX FLUSH VALVE - FLYGT
18.2	2	30-PU0000FL	PUMP - FLYGT NP3127SH - PUMP FLANGE DRILLED FOR ANSI FLANGE
18.3	2	32-AC0000EB	LIFTING ASSEMBLY - 316SS S5 9/32" CHAIN X 10' - 11' CABLE, 21' TOTAL LENGTH
18.4	2	32-CG5S000D	CABLE SUPPORT GRIP - 304SS - 0.75in-0.99in
18.5	1	32-PLGE0000	GRIP EYE UNIT
21	78ft	40-PP1Q00S6	PIPE - 316SS SCH40 - 1.25in DIA (4 @ 10ft & 4 @ 9.5ft)
22	2	44-CP040AD0	COUPLING - 4in - ALPHA
23	2	44-CP060AD0	COUPLING - 6in - ALPHA
24	2	45-FP04060P	SPOOL - DI - 4in DIA x 60in - FLGxPE - P401
25	2	45-FP04168P	SPOOL - DI - 4in DIA x 168in - FLGxPE - P401
26	2	45-FP06054P	SPOOL - DI - 6in DIA x 54in - FLGxPE - P401
28	2	46-EL490DIP	ELBOW - DI - 4in x 90deg - FLGxFLG - P401
30	2	48-FL060BD0	FLANGE - DI - 6in - BLIND - P401
31	4	49-GS040000	GASKET - FLANGE - 4in
33	1	50-AC000000	WELL SHIPPING CRATE
33.1	1	13-KY000000	HATCH KEY
33.2	5	18-AC00CH00	CABLE HANGER ASSEMBLY - 316SS
33.3	4	18-HD040000	LIFTING CLUTCH - 4 TON
33.4	4	18-HD080000	LIFTING CLUTCH - 8 TON
33.5	1	51-AC00NSTB	NEVER SIEZE - TUBE
33.6	149	51-JWCS2120	JOINT WRAP - 12in - CONSEAL CS-212
33.7	2	51-SECS1800	SEALANT - BUCKET - CONSEAL CS-1800
33.8	5	51-SECS1900	SEALANT - TUBE - CONSEAL CS-1900
33.9	15	51-SECS231L	SEALANT - 2in x 1in - CONSEAL CS-231
33.10	1	62-CG00PT00	CORD GRIP - CABLE - WEDGE CLAMP
33.11	1	80-FI00PT00	DESSICANT FILTER - PRESSURE TRANSDUCER
33.12	5	80-FSMJK999	FLOAT - MJK (BY GREAT BASIN)
33.13	1	80-PTMJK999	PRESSURE TRANSDUCER - MJK 2100 (BY GREAT BASIN)
34	3	59-KB080400	KOR-N-SEAL - 8in CORE - 4in thru 1.5in PIPE
35	2	59-KB1206DI	KOR-N-SEAL - 12in CORE x 6in DIPS PIPE
36	1	59-KB201500	KOR-N-SEAL - 20in CORE x 15in PIPE
37	1	61-EP5036DC	PNL DISCONNECT 31-50FLA (36x36)
38	4.0 ft	70-PP0400P4	PIPE - PVC SCH40 - 4in DIA
39	5.0 ft	70-PP1000DR	PIPE - PVC SDR35 - 10in DIA
40	19.5ft	70-SW0400P4	STILLING WELL - 4in PVC PIPE - PERFORATED

**10' DIAMETER WET WELL**  
**4" & 6" DISCHARGE PIPING**  
**NP 3000 FLYGT**  
**816 VALVE VAULT**  
**FOR CONSTRUCTION**

**COLOR LEGEND**  

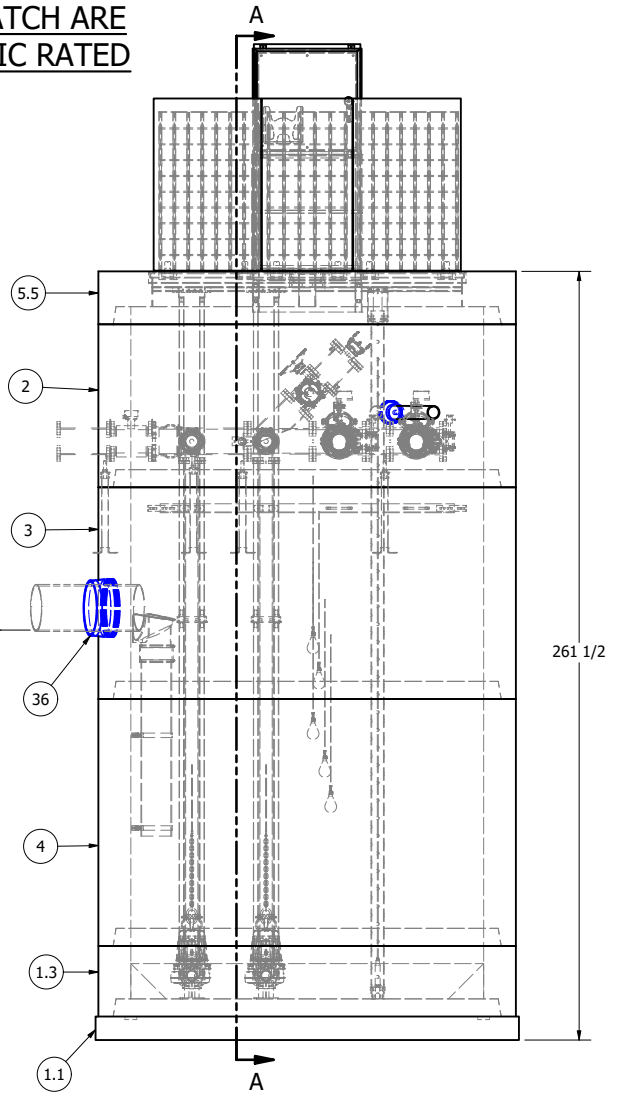
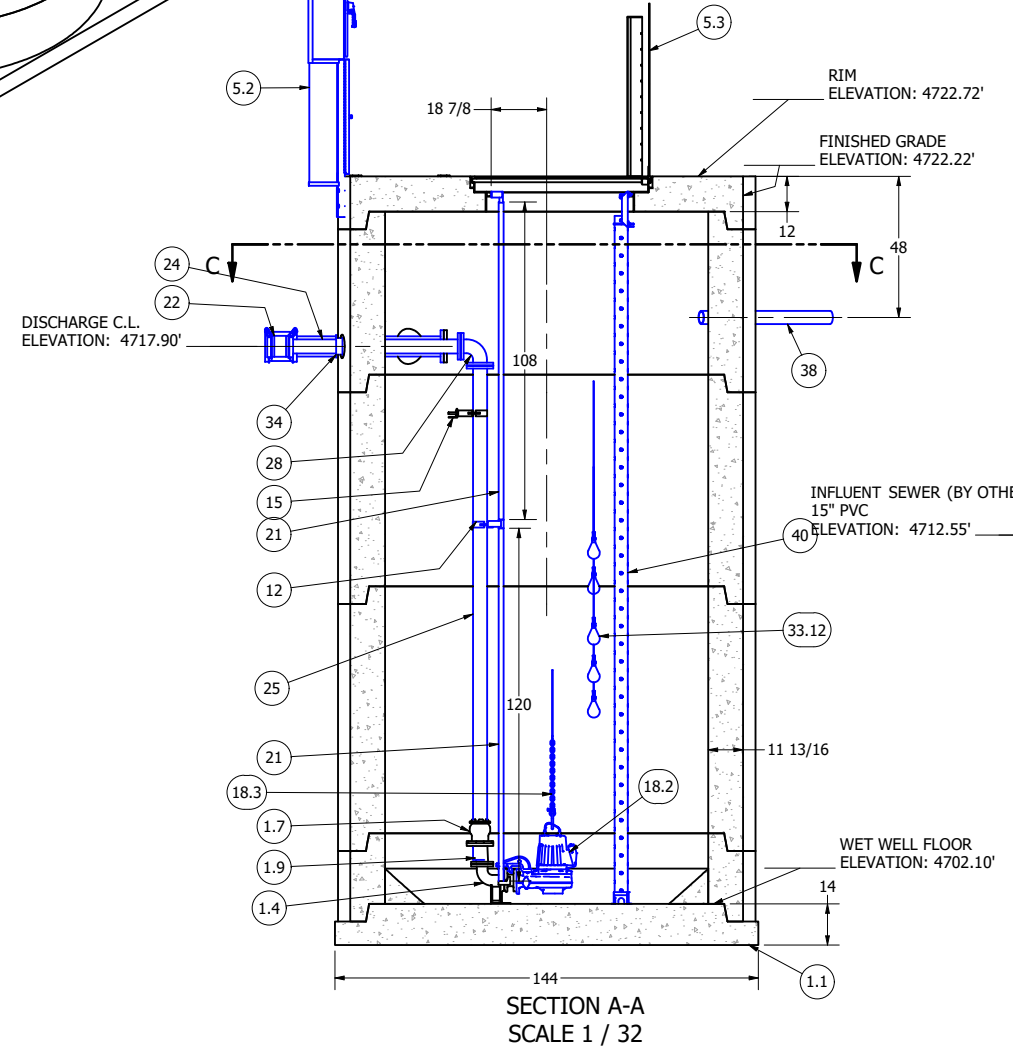
 MAJOR CONCRETE COMPONENTS WITH PRE-INSTALLED COMPONENTS.  
 COMPONENTS PRE-ASSEMBLED TO THE EXTENT POSSIBLE AND WILL NEED TO BE FIELD INSTALLED.

NOTE: PRE-ASSEMBLY IS DONE AT ROMTEC UTILITIES' DISCRETION AND MAY CHANGE AT THE TIME OF PRODUCTION.

ALL MATERIALS SHOWN ON THIS SHEET WILL BE SUPPLIED BY ROMTEC UTILITIES AND DELIVERED TO THE SITE AFTER THE HOLE HAS BEEN EXCAVATED AND SHORED. THE CONTRACTOR SHALL SUPPLY A CRANE OF SUFFICIENT SIZE TO LOWER ALL THE CONCRETE PIECES INTO THE HOLE SAFELY. THE CONTRACTOR SHALL INSTALL THE WET WELL (AND VALVE VAULT AND METERING VAULT IF APPLICABLE). ROMTEC UTILITIES WILL PROVIDE A REPRESENTATIVE FOR TECHNICAL ASSISTANCE ON THE DAY OF INSTALLATION TO ANSWER ANY QUESTIONS THAT MAY ARISE. THE CONTRACTOR IS RESPONSIBLE FOR ALL PLUMBING AND ELECTRICAL CONNECTIONS AND INSTALLATION. ITEMS NOTED AS "BY OTHERS" WILL BE PROVIDED AND INSTALLED BY THE CONTRACTOR. ROMTEC UTILITIES WILL NOT INSTALL ANY OF THE COMPONENTS SHOWN ON THIS PAGE.



© 2020 ROMTEC INC. ALL RIGHTS RESERVED. THESE PLANS AND DRAWINGS MAY NOT BE REPRODUCED, ADAPTED, OR FURTHER DISTRIBUTED, AND NO COMPONENTS MAY BE CONSTRUCTED FROM THESE PLANS, WITHOUT WRITTEN PERMISSION OF ROMTEC, INC.



**COATING:**

INTERIOR SPRAYWALL SPRAYROQ COATING IS BY OTHERS, NOT ROMTEC UTILITIES

EXTERIOR COATING IS TNEMEC 43H-416, BY ROMTEC UTILITIES

NOTE: ALL DIMENSIONS AND ELEVATIONS SHOWN ARE NOMINAL DIMENSIONS. IT IS THE RESPONSIBILITY OF THE ON-SITE CONTRACTOR OR ROMTEC UTILITIES CUSTOMER (NOT ROMTEC UTILITIES) TO VERIFY THE ACCURACY OF ANY CRITICAL DIMENSIONS OR ELEVATIONS PRIOR TO SETTING OR INSTALLING ANY EQUIPMENT.

REV	DATE	DESCRIPTION
1	9-22-20	REVISED PER COMMENTS THRU 9-17-20
2	11/2/2020	PRODUCTION LAUNCH
3	11/4/2020	UPDATED WW BASE DESIGN
4	11/5/2020	ADDED PT. THE VALVE VAULT
5	11/17/2020	REVISED WW BASE SLAB THICKNESS
6	2/3/2021	ADJUST DIMENSIONS/ELEVATIONS FOR AS BUILT CONCRETE

**ROMTEC UTILITIES**  
 18240 NORTH BANK ROAD  
 ROSEBURG, OREGON 97470  
 PHONE: (541) 496-9678  
 WWW.ROMTECUTILITIES.COM

**VALLEY KNOLLS**  
 DOUGLAS COUNTY, NEVADA

**WET WELL COMPONENT DRAWING**

MECHANICAL SHEET  
 1 OF 5