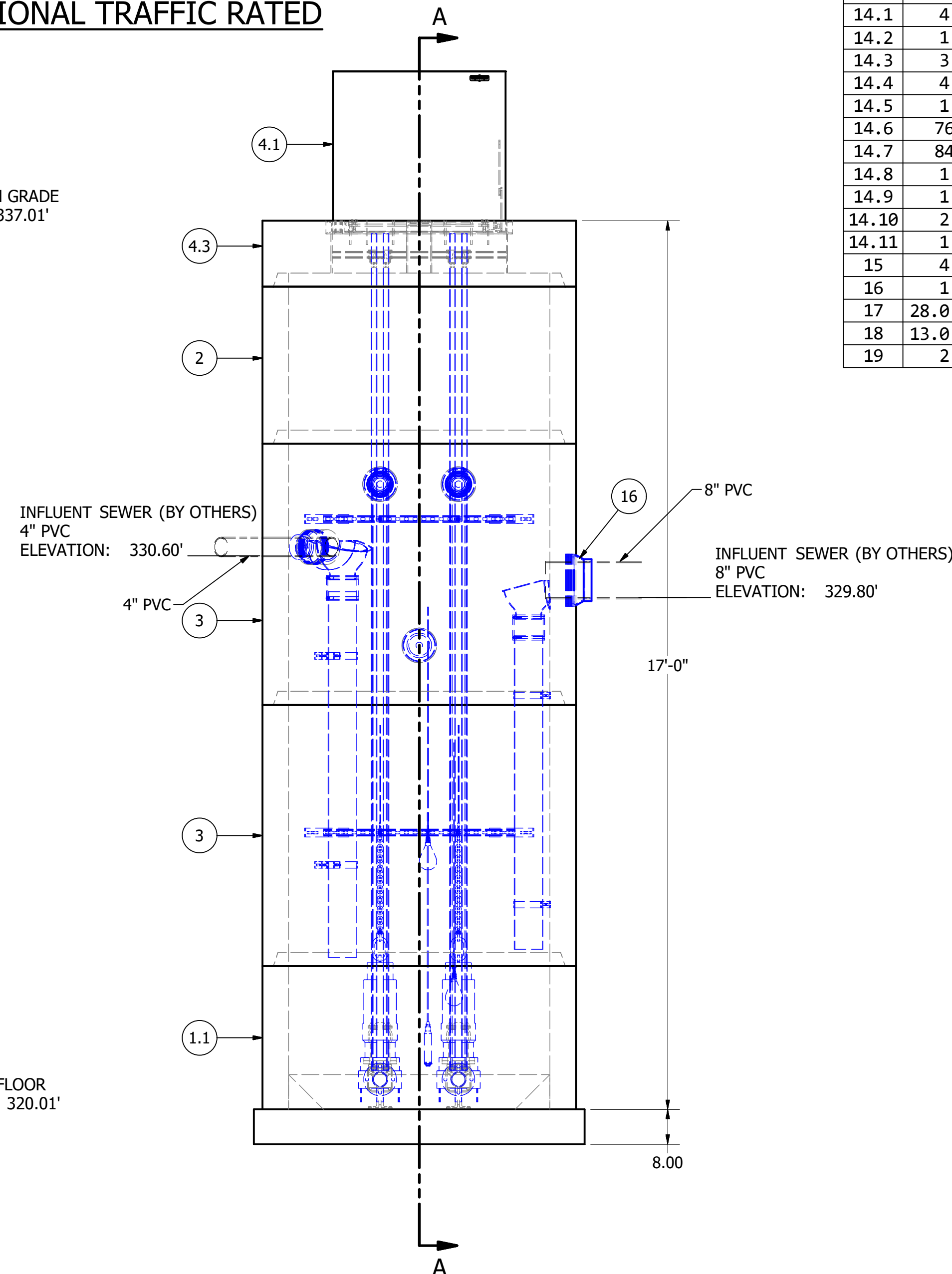
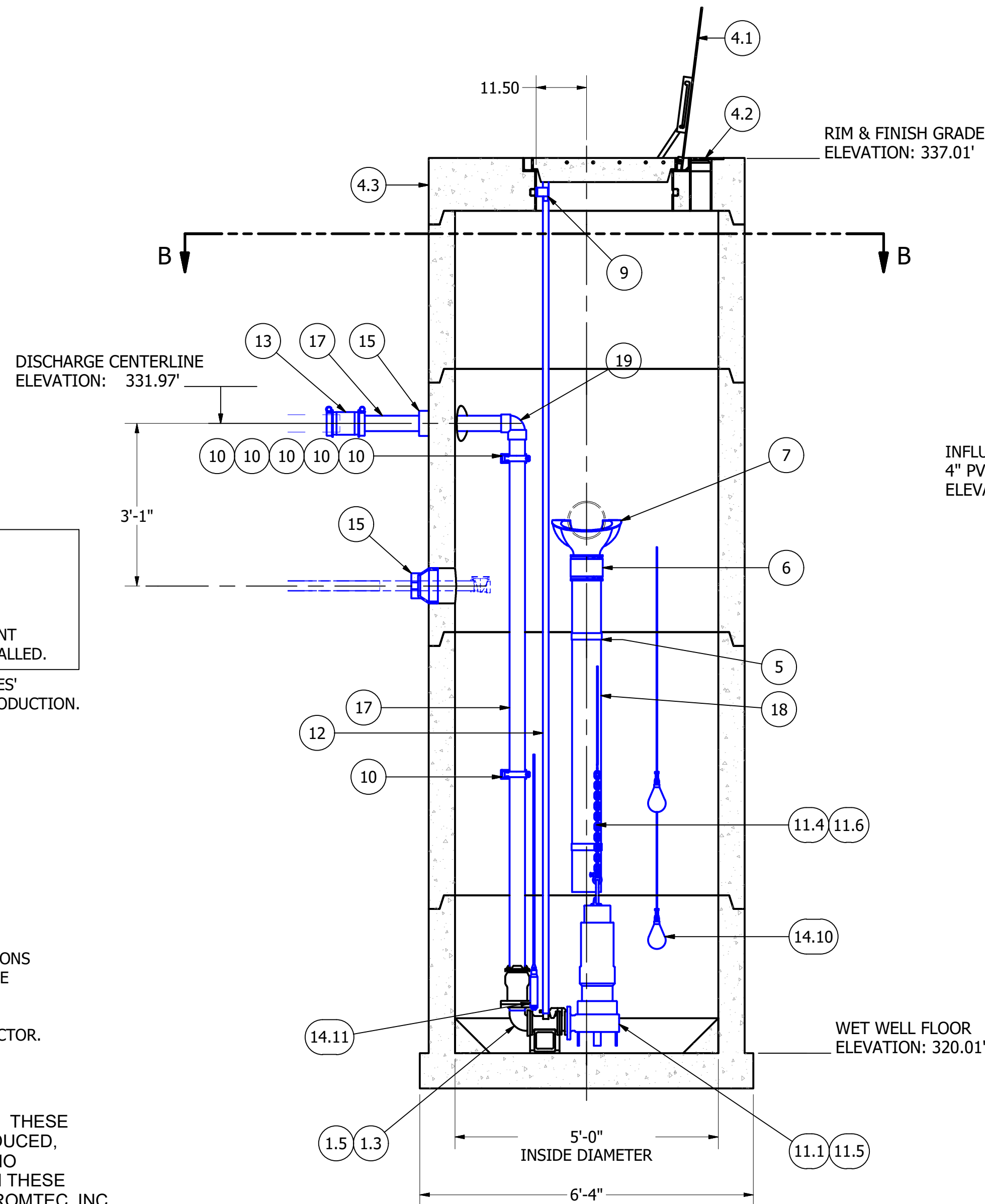


SENSOR AND ELEVATION TABLE		
LEVEL ELEVATION	DISTANCE BETWEEN POINTS	SET POINT DESCRIPTION
329.80		INVERT IN
327.11		BACK UP PUMPS START
	1.00	SENSOR SPACING
326.61		BACK UP PUMPS STOP
	0.50	SENSOR SPACING
325.61		BACK UP HL ALARM
325.11		HIGH LEVEL ALARM
	0.50	SENSOR SPACING
324.61		LAG PUMP START
	1.00	SENSOR SPACING
323.61		LEAD PUMP START
	1.10	SENSOR SPACING
322.51		PUMP STOP
	2.50	DISTANCE TO FLOOR
320.01		FLOOR ELEVATION

**NOTE: TOP SLAB AND HATCH ARE H-20 OCCASIONAL TRAFFIC RATED**



PARTS LIST			
ITEM	QTY	STOCK NUMBER	DESCRIPTION
1	1	10-CB000000	BASE SLAB ASSEMBLY
1.1	1	10-CB053600	BASE - WW - 5ft DIA x 36in
1.2	1	10-GR050000	GROUT RING - 5ft DIA - 8in
1.3	2	31-EL0303EB	DISCHARGE ELBOW - 3in x 3in - EBARA
1.4	2	31-HW00AKS6	ANCHOR KIT - 316SS - DISCHARGE ELBOW
1.5	2	31-QD03LMEB	QUICK DISCHARGE CONNECTOR - 3in - EBARA LM80
1.6	2	44-AD03HYFA	FLANGE ADAPTER - 3in - HYMAX GRIP
2	1	12-CR053600	BARREL - 5ft DIA x 3ft H
3	2	12-CR056000	BARREL - 5ft DIA x 5ft H
4	1	14-CT000000	TOP SLAB ASSEMBLY
4.1	1	13-HH05HD0U	HATCH - H20 - 5ft
4.2	1	13-VT0000AL	VENT - ALUMINUM - FLUSH
4.3	1	14-CT05HD00	TOP SLAB - 5ft DIA - H20
5	4	15-BR06SS35	BRACKET - 316SS - 6in PIPE
6	2	15-CP060000	COUPLING - FERNCO - 6in
7	2	15-DB410645	DROP BOWL - 4in thru 10in INLET x 6in OUTLET - 4ft - 5ft WET WELL
8	2	17-AC38000B	BOLT KIT - UPPER GUIDE BAR BRACKET
9	2	17-UG0154EB	BRACKET - 304SS - UPPER GUIDE BAR - 1in
10	2	18-BR000000	BRACKET ASSEMBLY - 316SS - DISCHARGE SUPPORT
11	1	30-PU000000	PUMP SHIPPING CRATE
11.1	2	30-PU0000EB	EBARA 80DVBFMU63.74 - 5HP - 460V/3P
11.2	2	30-PUCABL05	PUMP OPTION: LONG CABLES - 75ft - 5HP
11.3	2	30-PUTRIM00	PUMP OPTION: IMPELLER TRIM - .5HP THRU 5HP
11.4	2	32-AC0000EB	LIFTING ASSEMBLY - EBARA
11.5	2	32-CGA000SS	CORD GRIP - .750in - .990 - SS
11.6	1	32-PL000000	LIFTING RING - PUMP
12	64.0 ft	40-PP0100S4	PIPE - 304SS SCH40 - 1in DIA - 4 @ 16ft
13	2	44-CP030HD0	COUPLING - 3in - HYMAX GRIP
14	1	50-AC000000	WELL SHIPPING CRATE
14.1	4	12-GS000001	BARREL - GASKET
14.2	1	13-KY000000	HATCH KEY
14.3	3	18-AC00CH00	CABLE HANGER ASSEMBLY
14.4	4	18-HD040000	LIFTING CLUTCH - 4 TON
14.5	1	51-AC00NSTB	NEVER SIEZE - TUBE
14.6	76	51-BT060000	JOINT WRAP - 6in - BOA TAPE
14.7	84	51-SE3Q3QSL	SEALANT - 0.75in x 0.75in - 21ft/ROLL - CS-202
14.8	1	80-BR00PT00	BRACKET - PRESSURE TRANSDUCER
14.9	1	80-FI00PT00	DESSICANT FILTER - PRESSURE TRANSDUCER
14.10	2	80-FS20MSNL	FLOAT - 20m - MS1 - NOLTA
14.11	1	80-PT1500EH	PRESSURE TRANSDUCER - 0-15PSI - 60ft CABLE - E & H
15	4	59-KB080400	KOR-N-SEAL - 8in CORE - 4in thru 1.5in PIPE
16	1	59-KB1208P0	KOR-N-SEAL - 12in CORE x 8in PVC PIPE
17	28.0 ft	70-PP0300P8	PIPE - PVC SCH80 - 3in DIA
18	13.0 ft	70-PP0600DR	PIPE - PVC SDR35 - 6in DIA
19	2	76-EL039080	ELBOW - PVC SCH80 - 3in x 90deg - SLIP

NOTE:  
CONDUIT TO CONTROL PANEL (BY OTHERS)  
MINIMUM:  
(2) FOR POWER  
(1) FOR LEVEL SENSING

**COLOR LEGEND**

- MAJOR CONCRETE COMPONENTS WITH PRE-INSTALLED COMPONENTS.
- COMPONENTS PRE-ASSEMBLED TO THE EXTENT POSSIBLE AND WILL NEED TO BE FIELD INSTALLED.

NOTE: PRE-ASSEMBLY IS DONE AT ROMTEC UTILITIES' DISCRETION AND MAY CHANGE AT THE TIME OF PRODUCTION.

ALL MATERIALS SHOWN ON THIS SHEET WILL BE SUPPLIED BY ROMTEC UTILITIES AND DELIVERED TO THE SITE AFTER THE HOLE HAS BEEN EXCAVATED AND SHORED. THE CONTRACTOR SHALL SUPPLY A CRANE OF SUFFICIENT SIZE TO LOWER ALL THE CONCRETE PIECES INTO THE HOLE SAFELY. THE CONTRACTOR SHALL INSTALL THE WET WELL (AND VALVE VAULT AND METERING VAULT IF APPLICABLE). ROMTEC UTILITIES WILL PROVIDE A REPRESENTATIVE FOR TECHNICAL ASSISTANCE ON THE DAY OF INSTALLATION TO ANSWER ANY QUESTIONS THAT MAY ARISE. THE CONTRACTOR IS RESPONSIBLE FOR ALL PLUMBING AND ELECTRICAL CONNECTIONS AND INSTALLATION. ITEMS NOTED AS "BY OTHERS" WILL BE PROVIDED AND INSTALLED BY THE CONTRACTOR. ROMTEC UTILITIES WILL NOT INSTALL ANY OF THE COMPONENTS SHOWN ON THIS PAGE.

© 2018 ROMTEC INC. ALL RIGHTS RESERVED. THESE PLANS AND DRAWINGS MAY NOT BE REPRODUCED, ADAPTED, OR FURTHER DISTRIBUTED, AND NO COMPONENTS MAY BE CONSTRUCTED FROM THESE PLANS, WITHOUT WRITTEN PERMISSION OF ROMTEC, INC.

**5' DIAMETER WET WELL  
3" DISCHARGE PIPING  
DUPLEX EBARA PUMPS  
3" - 577 VALVE VAULT**

**FOR DESIGN REVIEW**

NOTE: CONTRACTOR TO SEAL ALL CONCRETE JOINTS AND PIPE PENETRATIONS WITH NON-SHRINK GROUT

NOTE: ALL DIMENSIONS AND ELEVATIONS SHOWN ARE NOMINAL DIMENSIONS. IT IS THE RESPONSIBILITY OF THE ON-SITE CONTRACTOR OR ROMTEC UTILITIES CUSTOMER (NOT ROMTEC UTILITIES) TO VERIFY THE ACCURACY OF ANY CRITICAL DIMENSIONS OR ELEVATIONS PRIOR TO SETTING OR INSTALLING ANY EQUIPMENT.

REVISION HISTORY	
REV	DESCRIPTION
1	4-9-19 DATE

VERIFY SCALE  
0 1"

ROMTEC UTILITIES  
18240 NORTH BANK ROAD  
ROSEBURG, OREGON 97470  
PHONE: (541) 496-9678  
WWW.ROMTECUTILITIES.COM

EAGLE RIDGE APARTMENTS  
OREGON  
WET WELL ASSEMBLY  
5' DIA - 3" DUPLEX WET WELL ASSEMBLY  
COMPONENT DRAWING

MECHANICAL SHEET  
3 OF 4