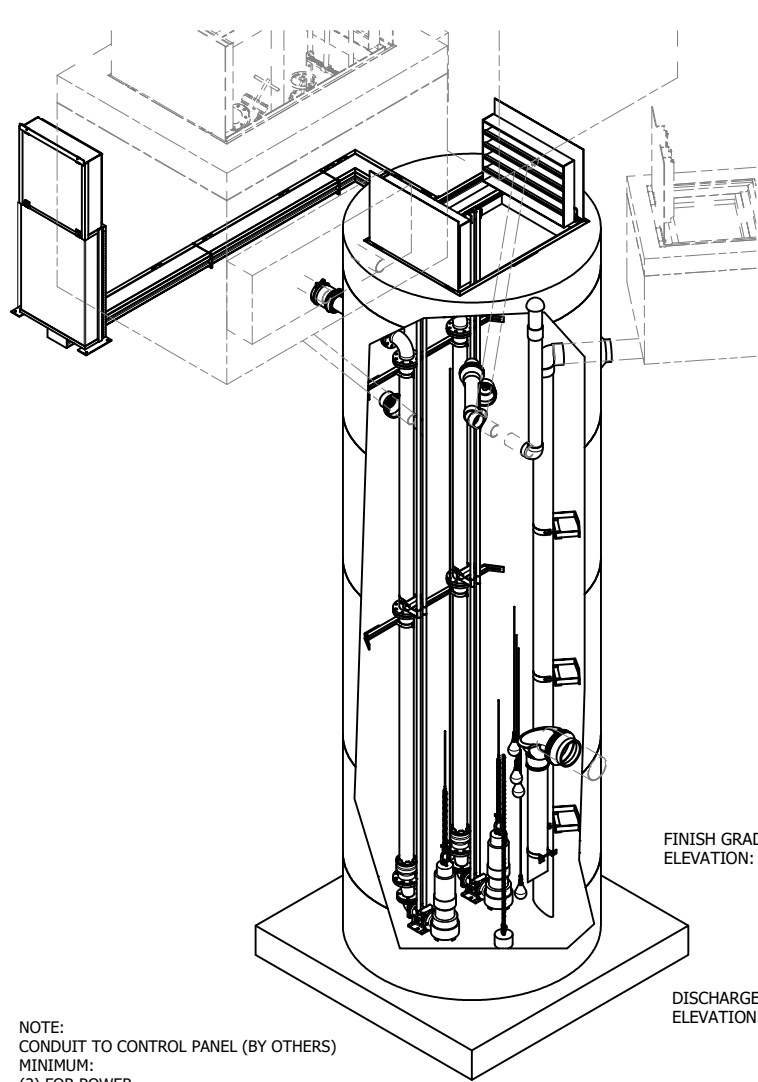


2.02 MECHANICAL PLANS



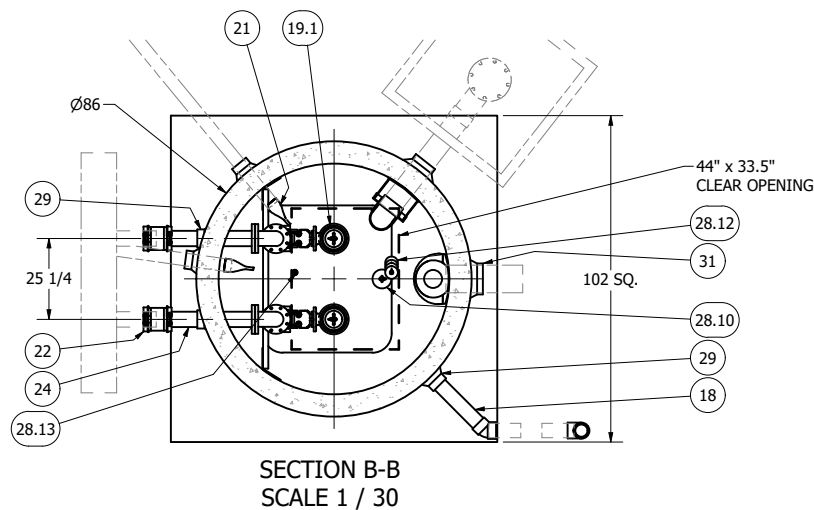
NOTE:
CONDUIT TO CONTROL PANEL (BY OTHERS)
MINIMUM:
(2) FOR POWER
(1) FOR LEVEL SENSING

6" DIAMETER WET WELL
4" DISCHARGE PIPING
EBARA VORTEX PUMPS
4" VALVE & METER VAULTS
FOR PRODUCTION

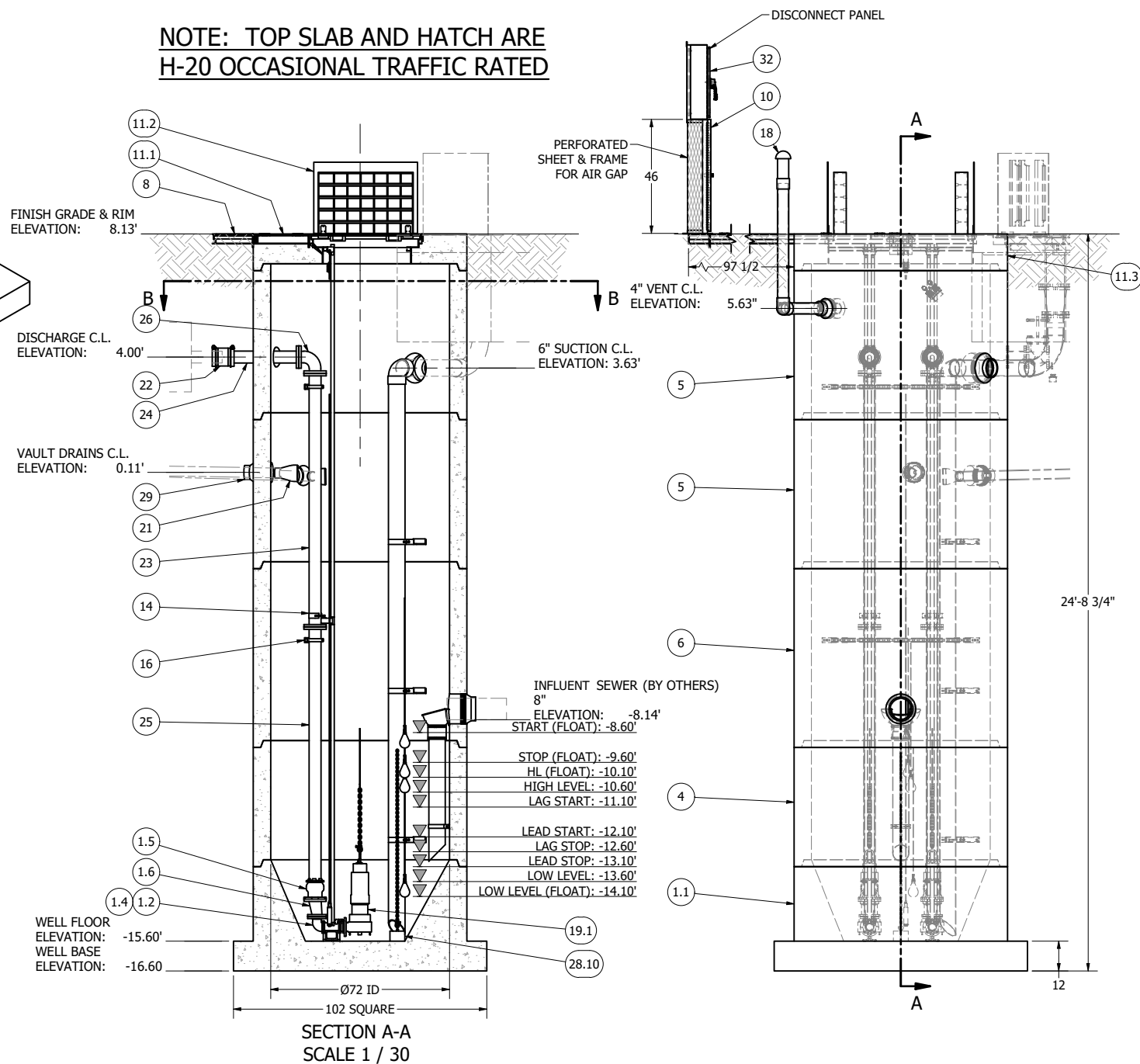
ALL MATERIALS SHOWN ON THIS SHEET WILL BE SUPPLIED BY ROMTEC UTILITIES AND DELIVERED TO THE SITE AFTER THE HOLE HAS BEEN EXCAVATED AND SHORED. THE CONTRACTOR SHALL SUPPLY A CRANE OF SUFFICIENT SIZE TO LOWER ALL THE CONCRETE PIECES INTO THE HOLE SAFELY. THE CONTRACTOR SHALL INSTALL THE WET WELL (AND VALVE VAULT AND METERING VAULT IF APPLICABLE). ROMTEC UTILITIES WILL PROVIDE A REPRESENTATIVE FOR TECHNICAL ASSISTANCE ON THE DAY OF INSTALLATION TO ANSWER ANY QUESTIONS THAT MAY ARISE. THE CONTRACTOR IS RESPONSIBLE FOR ALL PLUMBING AND ELECTRICAL CONNECTIONS AND INSTALLATION. ITEMS NOTED AS "BY OTHERS" WILL BE PROVIDED AND INSTALLED BY THE CONTRACTOR. ROMTEC UTILITIES WILL NOT INSTALL ANY OF THE COMPONENTS SHOWN ON THIS PAGE.



© 2020 ROMTEC INC. ALL RIGHTS RESERVED. THESE PLANS AND DRAWINGS MAY NOT BE REPRODUCED, ADAPTED, OR FURTHER DISTRIBUTED, AND NO COMPONENTS MAY BE CONSTRUCTED FROM THESE PLANS, WITHOUT WRITTEN PERMISSION OF ROMTEC, INC.



NOTE: TOP SLAB AND HATCH ARE H-20 OCCASIONAL TRAFFIC RATED



PARTS LIST			
ITEM	QTY	STOCK NUMBER	DESCRIPTION
1	1	10-CB00000	BASE SLAB ASSEMBLY
1.1	1	10-CB068H0W	BASE - WW - 6ft DIA - RU DESIGN - SQUARE
1.2	2	31-EL2H03EB	DISCHARGE ELBOW - 2.5in X 3in - EBARA
1.3	2	31-HM00AKS6	ANCHOR KIT - 316SS - DISCHARGE ELBOW
1.4	2	31-QD2HLM6B	QDC - 2.5in - LM65 - EBARA
1.5	2	44-AD04RML	FLANGE ADAPTER - 4in - ALPHA
1.6	2	48-RD0403DE	REDUCER - DI - 4in x 3in - ECCENTRIC
1.7	2	49-GS030000	GASKET - FLANGE - 3in
2	1	11-LC0600EX	COATING - EXTERIOR - 6ft DIA - TNE MEC 46H-413
3	1	11-LC0600IN	COATING - INTERIOR - 6ft DIA - TNE MEC 436
4	1	12-CR06480W	BARREL - 6ft DIA x 4ft H
5	2	12-CR06600W	BARREL - 6ft DIA x 5ft H
6	1	12-CR06720W	BARREL - 6ft DIA x 6ft H
7	1	13-CA0608EC	CABLE TRAY - END CAP - 6in x 8in LONG
8	1	13-CAEL0690	CABLE TRAY - ELBOW - 6in WIDE - 90deg
9	2	13-CAEX0660	CABLE TRAY - EXTENSION - 6in x 5ft
10	1	13-DS3030SS	DISCONNECT STAND
11	1	14-CT000000	TOP SLAB ASSEMBLY
11.1	1	13-CA060000	CABLE TRAY - 6ft TOP SLAB
11.2	1	13-HH06HD0E	HATCH - 6ft - H20
11.3	1	14-CT06HD0W	TOP SLAB - 6ft DIA - H20
12	1	15-DB000000	DROP BOWL ASSEMBLY
13	2	17-AC38000B	BOLT KIT - UPPER GUIDE BAR BRACKET
14	2	17-IG0156EB	BRACKET - 316SS - INTERMEDIATE GUIDE BAR - 1in
15	2	17-UG0156EB	BRACKET - 316SS - UPPER GUIDE BAR - 1in
16	2	18-BR000000	BRACKET ASSEMBLY - 316SS - DISCHARGE SUPPORT
17	3	18-BR9999999	BRACKET ASSEMBLY - SUCTION PIPE
18	1	18-VT000000	VENT ASSEMBLY - 4in PVC SCH80 W/ ODOR HOG
19	1	30-PU000000	PUMP SHIPPING CRATE
19.1	2	30-PU0000EB	PUMP - EBARA 80DVCUF63.7 5HP
19.2	1	30-PU0000EB	EBARA - SPARE PUMP
19.3	3	32-AC0000EB	LIFTING CHAIN ASSEMBLY - 20ft LENGTH
19.4	3	32-CGSS000D	CABLE SUPPORT GRIP - 304SS - 0.75in-0.99in
19.5	1	32-PLGE0000	GRIP EYE UNIT
20	90.0 ft	40-PP0100S6	PIPE - 316SS SCH40 - 1in DIA
21	2	42-TF030000	CHECK VALVE - TIDEFLEX - 3in
22	2	44-CP040AD0	COUPLING - 4in - ALPHA
23	2	45-FF041020	SPOOL - DI - 4in DIA x 102in - FLGxFLG
24	2	45-FF040300	SPOOL - DI - 4in DIA x 30in - FLGxPE
25	2	45-FF041080	SPOOL - DI - 4in DIA x 108in - FLGxPE
26	2	46-EL0490DI	ELBOW - DI - 4in x 90deg - FLGxFLG
27	6	49-GS040000	GASKET - FLANGE - 4in
28	1	50-AC000000	WELL SHIPPING CRATE
28.1	1	13-KY000000	HATCH KEY
28.2	4	18-AC00CH00	CABLE HANGER ASSEMBLY - 316SS
28.3	4	18-HD040000	LIFTING CLUTCH
28.4	1	51-AC00NSTB	NEVER SIEZE - TUBE
28.5	113 ft	51-JWCS2120	JOINT WRAP - 12in - CONSEAL CS-212
28.6	1	51-SECS1800	SEALANT - BUCKET - CONSEAL CS-1800
28.7	5	51-SECS1900	SEALANT - TUBE - CONSEAL CS-1900
28.8	113 ft	51-SECS2315	SEALANT - 1in x .75in - CONSEAL CS-231
28.9	1	62-CG00PT00	CORD GRIP - PRESSURE TRANSDUCER - WEDGE CLAMP
28.10	1	80-ACANCH00	LEVEL SENSOR ANCHOR ASSEMBLY
28.11	1	80-FI00PT00	DESSICANT FILTER - PRESSURE TRANSDUCER
28.12	4	80-FS20MSNL	FLOAT - 20m - MS1 - NOLTA
28.13	1	80-PT1500EH	PRESSURE TRANSDUCER - 0-15PSI - 60ft CABLE
29	5	59-KB080400	KOR-N-SEAL - 8in CORE - 4in thru 1.5in PIPE
30	1	59-KB1206SS	KOR-N-SEAL - 12in CORE x 6in IPS PIPE
31	1	59-KB1208P0	KOR-N-SEAL - 12in CORE x 8in PVC PIPE
32	1	61-EP1500DC	DISCONNECT PANEL - 0-15FLA
33	20.0 ft	70-PP0600P4	PIPE - PVC SCH40 - 6in DIA
34	1	76-EL069040	ELBOW - PVC SCH40 - 6in x 90deg - SLIP

NOTE: ALL DIMENSIONS AND ELEVATIONS SHOWN ARE NOMINAL DIMENSIONS. IT IS THE RESPONSIBILITY OF THE ON-SITE CONTRACTOR OR ROMTEC UTILITIES CUSTOMER (NOT ROMTEC UTILITIES) TO VERIFY THE ACCURACY OF ANY CRITICAL DIMENSIONS OR ELEVATIONS PRIOR TO SETTING OR INSTALLING ANY EQUIPMENT.

DATE	REV	DESCRIPTION	BY
11-9-20	1	ADJUST PIGGING PORT, RIM ELEVATIONS	KB
4/29/2021	2	ADD METER VAULT, SUCTION VAULT	KB

VERIFY SCALE: 0 1" (1" = 1'-0")

ROMTEC UTILITIES
18240 NORTH BANK ROAD
ROSEBURG, OREGON 97470
PHONE: (541) 496-9678
WWW.ROMTECUTILITIES.COM

MT SOLO
LONGVIEW, WA

WET WELL ASSEMBLY
COMPONENT DRAWING

MECHANICAL SHEET
2 OF 6