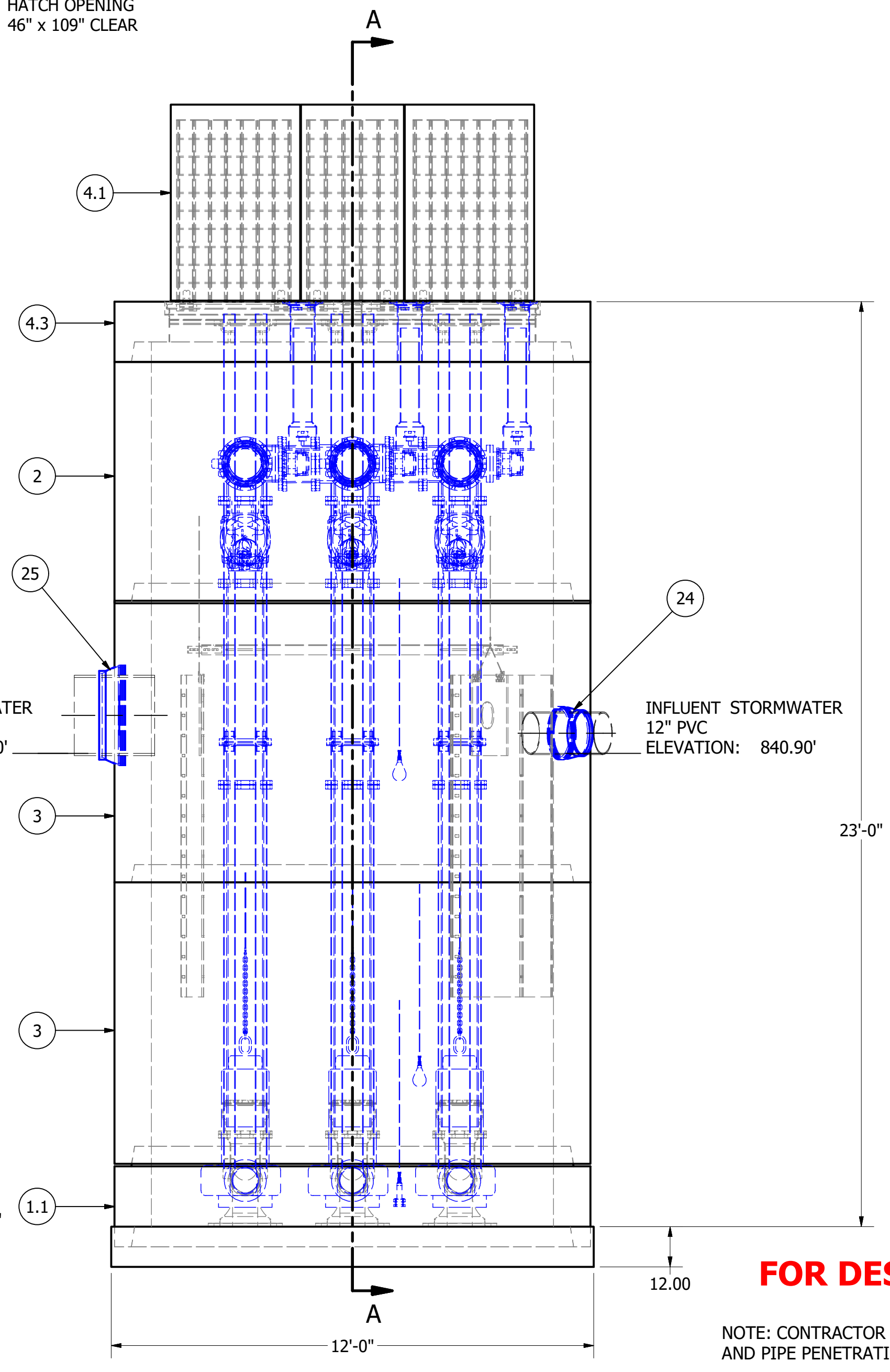
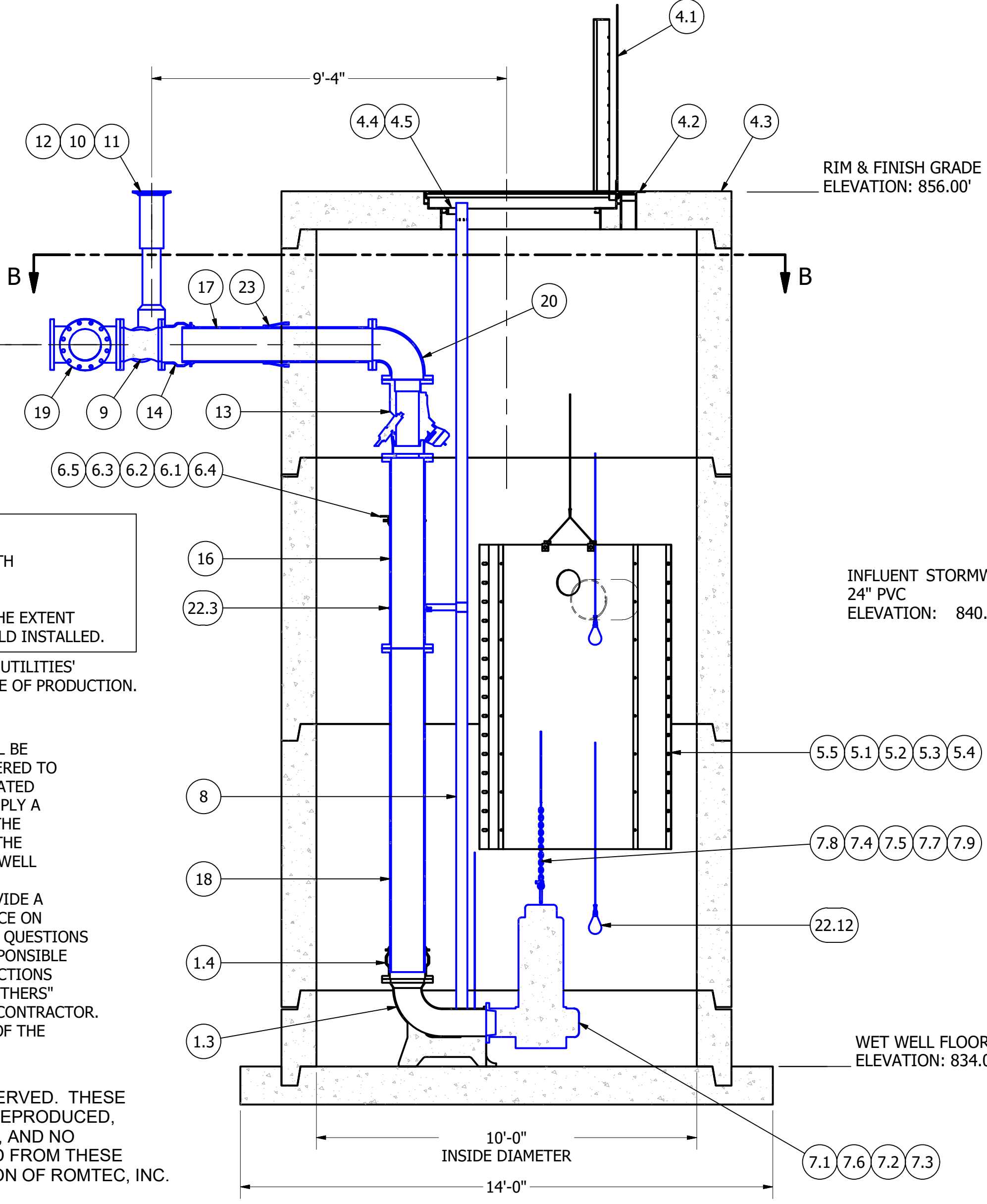


SENSOR AND ELEVATION TABLE		
LEVEL ELEVATION	DISTANCE BETWEEN POINTS	SET POINT DESCRIPTION
840.90		INVERT IN
840.40		BACK UP PUMPS START
	0.50	SENSOR SPACING
839.90		BACK UP PUMPS STOP
	0.50	SENSOR SPACING
839.40		BACK UP HL ALARM
838.90		HIGH LEVEL ALARM
	0.50	SENSOR SPACING
838.40		LAG PUMP START
	1.00	SENSOR SPACING
837.40		LEAD PUMP START
	0.90	SENSOR SPACING
836.50		PUMP STOP
	2.50	DISTANCE TO FLOOR
834.00		FLOOR ELEVATION

NOTE: TOP SLAB AND HATCH ARE H-20 OCCASIONAL TRAFFIC RATED



PARTS LIST			
ITEM	QTY	STOCK NUMBER	DESCRIPTION
1	1	10-CB00000	BASE SLAB ASSEMBLY
1.1	1	10-CB102400	BASE - WW - 10ft DIA x 24in
1.2	3	31-HW00AK56	ANCHOR KIT - 316SS - DISCHARGE ELBOW
1.3	3	31-QD10LYEB	QUICK DISCHARGE CONNECTOR - 10in - LL250YU
1.4	3	44-AD10RMAL	FLANGE ADAPTER - 10in - ALPHA
2	1	12-CR107200	BARREL - 10ft DIA x 6ft H
3	2	12-CR108400	BARREL - 10ft DIA x 7ft H
4	1	14-CT000000	TOP SLAB ASSEMBLY
4.1	1	13-HH10HDTE	HATCH - H20 - 10ft - TRIPLEX
4.2	1	13-VT0000AL	VENT - ALUMINUM - FLUSH
4.3	1	14-CT10HDT0	TOP SLAB - 10ft DIA - H20 - TRIPLEX
4.4	3	17-AC38000B	BOLT KIT - UPPER GUIDE BAR BRACKET
4.5	3	17-UG03S4EB	BRACKET - UPPER GUIDE BAR BRACKET - 3in - 304SS - EBARA
5	2	15-DP100000	DEFLECTOR PANEL ASSEMBLY - 10ft
5.1	4	15-BR00SSGU	BRACKET - SS GUILLOTINE SET
5.2	2	15-DB00CAGU	GUILLOTINE CABLE ASSEMBLY - TOTAL LENGTH 12ft
5.3	2	50-AC00HDPE	HDPE - 24in X 24in X 1/2in - BLACK - cut from 4ft x 8ft
5.4	2	50-AC00HDPE	HDPE - 4ft X 8ft X 1-2in - BLACK
5.5	32 ft	50-AN100GS6	ANGLE - 316SS - 10ft - 11G FORMED - 4 @ 8ft
6	1	18-BR1010S6	DISCHARGE PIPE BRACKET - 10ft WW - 10in PIPE X 90in
6.1	3	18-AC00000B	BOLT KIT - 316SS - WALL BRACKET
6.2	2	18-AC00001B	DISCHARGE PIPE SUPPORT - WALL BRACKET
6.3	2	18-AC010HSB	BOLT KIT - DISCHARGE CLAMP - BOLT, WASHER, LOCK NUT
6.4	7.5 ft	50-AN0303S6	ANGLE - 316SS - 3in x 3in x .25 x 90in
6.5	3	55-HW0H10UB	U-BOLT - 304SS - 10in
7	1	30-PU000000	PUMP SHIPPING CRATE
7.1	3	30-PU0000EB	PUMP - EBARA 250DLFU637 - 50HP - 460V/3P
7.2	3	30-PUCABL50	PUMP OPTION: LONG CABLES - 75ft - 50HP
7.3	3	30-PUTRIM03	PUMP OPTION: IMPELLER TRIM - 40HP THRU 60HP
7.4	3	32-AC580LNK	LINK - 316SS - .625in - OBLONG - 2800# WLL
7.5	3	32-BS7160SS	BOW SHACKLE - 316SS - 7-16in
7.6	3	32-CGB000SS	CORD GRIP - SS - 1.000in THRU 1.240in
7.7	1	32-PL000000	LIFTING RING - PUMP
7.8	6 ft	32-PL3800S6	CHAIN - 316SS - 3-8in S5 - 3 @ 2ft
7.9	3	32-PLLSANYL	LIFTING SLING ASSEMBLY - COATED CABLE - 22ft TOTAL LG
8	126 ft	40-PP0300S4	PIPE - 304SS SCH40 - 3in DIA - 12 @ 10.5ft
9	3	41-PV100BD0	PLUG VALVE - 10in - GEAR OP NUT - BURIED
10	3	41-VB000LID	VALVE BOX - LID
11	3	41-VB000TOP	VALVE BOX - TOP
12	3	41-VB360BAS	VALVE BOX - BASE - 36in
13	3	42-SF100D0	CHECK VALVE - SWING FLEX - 10in
14	3	44-AD10RMAL	FLANGE ADAPTER - 10in - ALPHA
15	2	45-FF100090	SPOOL - DI - 10in DIA x 9.75in - FLGxFLG
16	3	45-FF100600	SPOOL - DI - 10in DIA x 60in - FLGxFLG
17	3	45-FP100600	SPOOL - DI - 10in DIA x 60in - FLGxPE
18	3	45-FP101020	SPOOL - DI - 10in DIA x 102in - FLGxPE
19	1	46-CX1010DI	CROSS - DI - 10in - FLGxFLG
20	5	46-EL1090DI	ELBOW - DI -10in x 90deg - FLGxFLG
21	19	49-GS100000	GASKET - FLANGE - 10in
22	1	50-AC000000	WELL SHIPPING CRATE
22.1	4	12-GS000001	BARREL - GASKET
22.2	1	13-KY000000	HATCH KEY
22.3	3	17-IG03S4EB	BRACKET - INTERMEDIATE GUIDE BAR - 3in - 304SS - EBARA
22.4	2	18-AC00CH00	CABLE HANGER ASSEMBLY
22.5	1	18-HD000EYE	LIFTING EYE
22.6	4	18-HD080000	LIFTING CLUTCH - 8 TON
22.7	1	51-AC00NSTB	NEVER SIEZE - TUBE
22.8	132.3	51-BT060000	JOINT WRAP - 6in - BOA TAPE
22.9	132	51-SE0101SL	JOINT SEALANT - 1in - CONSEAL CS-202
22.10	1	80-BR00PT00	BRACKET - PRESSURE TRANSDUCER
22.11	1	80-FI00PT00	DESSICANT FILTER - PRESSURE TRANSDUCER
22.12	2	80-FS20MSNL	FLOAT - 20m - MS1 - NOLTA
22.13	1	80-PT1000TD	PRESSURE TRANSDUCER - 0-10 PSI - 50ft CABLE
23	3	59-KB141000	KOR-N-SEAL - 14in CORE - 10in PIPE
24	1	59-KB1612P0	KOR-N-SEAL - 16in CORE x 12in PVC PIPE
25	1	59-KB302400	KOR-N-SEAL - 30in CORE x 24in PIPE

COLOR LEGEND

- MAJOR CONCRETE COMPONENTS WITH PRE-INSTALLED COMPONENTS.
- COMPONENTS PRE-ASSEMBLED TO THE EXTENT POSSIBLE AND WILL NEED TO BE FIELD INSTALLED.

NOTE: PRE-ASSEMBLY IS DONE AT ROMTEC UTILITIES' DISCRETION AND MAY CHANGE AT THE TIME OF PRODUCTION.

ALL MATERIALS SHOWN ON THIS SHEET WILL BE SUPPLIED BY ROMTEC UTILITIES AND DELIVERED TO THE SITE AFTER THE HOLE HAS BEEN EXCAVATED AND SHORED. THE CONTRACTOR SHALL SUPPLY A CRANE OF SUFFICIENT SIZE TO LOWER ALL THE CONCRETE PIECES INTO THE HOLE SAFELY. THE CONTRACTOR SHALL INSTALL THE WET WELL (AND VALVE VAULT AND METERING VAULT IF APPLICABLE). ROMTEC UTILITIES WILL PROVIDE A REPRESENTATIVE FOR TECHNICAL ASSISTANCE ON THE DAY OF INSTALLATION TO ANSWER ANY QUESTIONS THAT MAY ARISE. THE CONTRACTOR IS RESPONSIBLE FOR ALL PLUMBING AND ELECTRICAL CONNECTIONS AND INSTALLATION. ITEMS NOTED AS "BY OTHERS" WILL BE PROVIDED AND INSTALLED BY THE CONTRACTOR. ROMTEC UTILITIES WILL NOT INSTALL ANY OF THE COMPONENTS SHOWN ON THIS PAGE.

© 2018 ROMTEC INC. ALL RIGHTS RESERVED. THESE PLANS AND DRAWINGS MAY NOT BE REPRODUCED, ADAPTED, OR FURTHER DISTRIBUTED, AND NO COMPONENTS MAY BE CONSTRUCTED FROM THESE PLANS, WITHOUT WRITTEN PERMISSION OF ROMTEC, INC.

FOR DESIGN REVIEW

NOTE: CONTRACTOR TO SEAL ALL CONCRETE JOINTS AND PIPE PENETRATIONS WITH NON-SHRINK GROUT

NOTE: ALL DIMENSIONS AND ELEVATIONS SHOWN ARE NOMINAL DIMENSIONS. IT IS THE RESPONSIBILITY OF THE ON-SITE CONTRACTOR OR ROMTEC UTILITIES CUSTOMER (NOT ROMTEC UTILITIES) TO VERIFY THE ACCURACY OF ANY CRITICAL DIMENSIONS OR ELEVATIONS PRIOR TO SETTING OR INSTALLING ANY EQUIPMENT.

SUN VALLEY TRANSFER STORMWATER

CALIFORNIA

WET WELL ASSEMBLY

MECHANICAL SHEET

3 OF 4

18240 NORTH BANK ROAD
ROSEBURG, OREGON 97470
PHONE: (541) 496-9678
WWW.ROMTECUTILITIES.COM

COMPONENT DRAWING

VERIFY SCALE: 1" = 0'

DATE: 10/12/18

DRN: AM

CKD:

REVISION HISTORY

REV	DATE	DESCRIPTION
1		