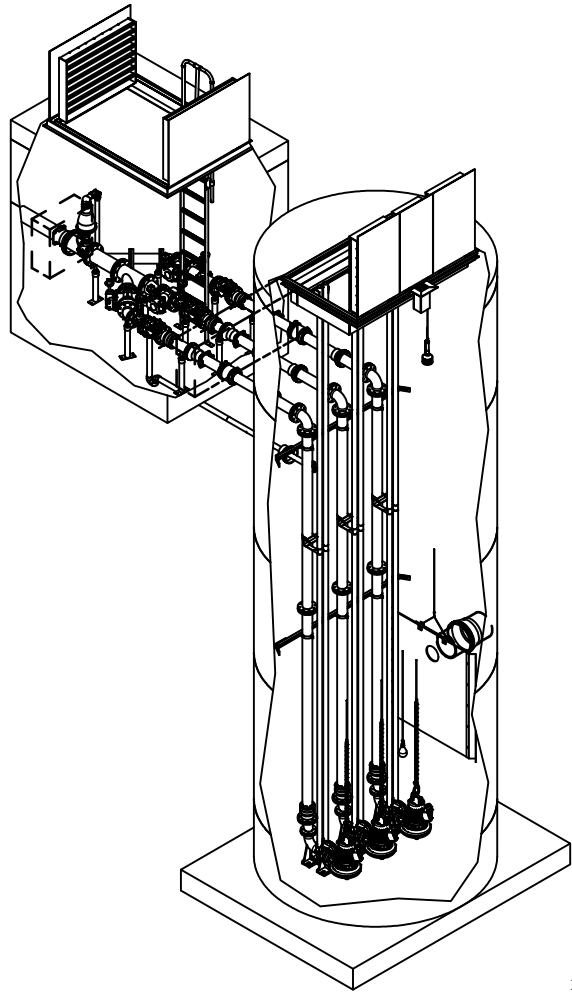
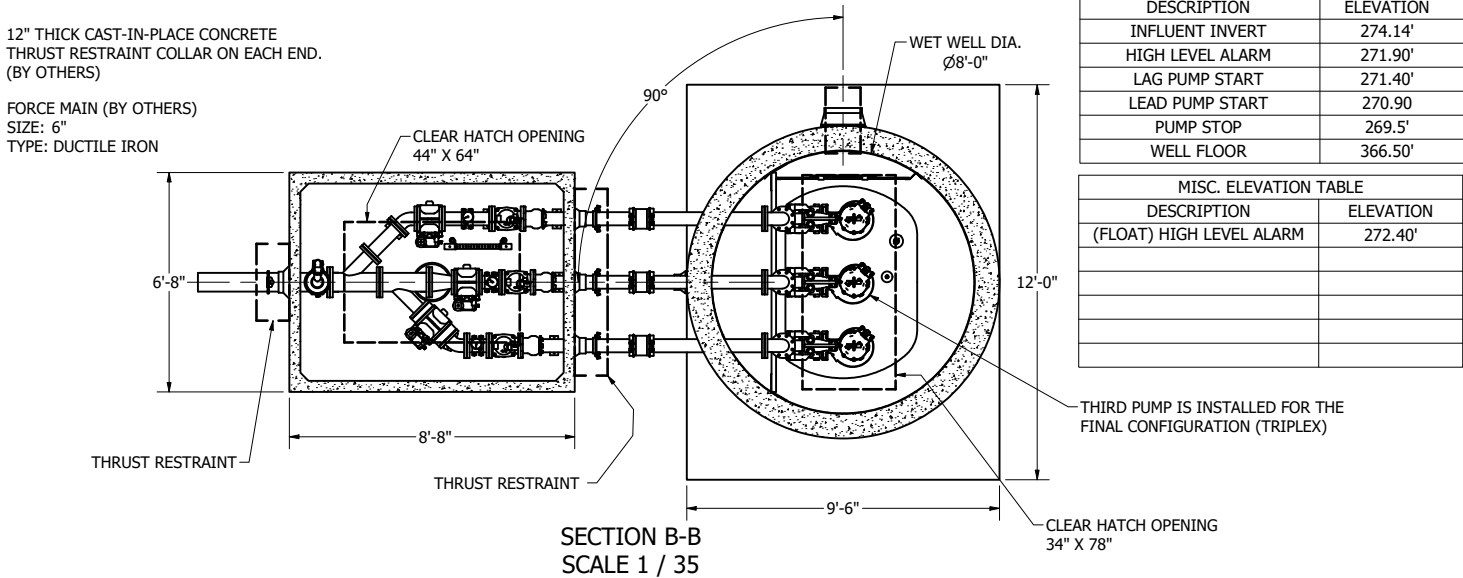


FOR DESIGN REVIEW

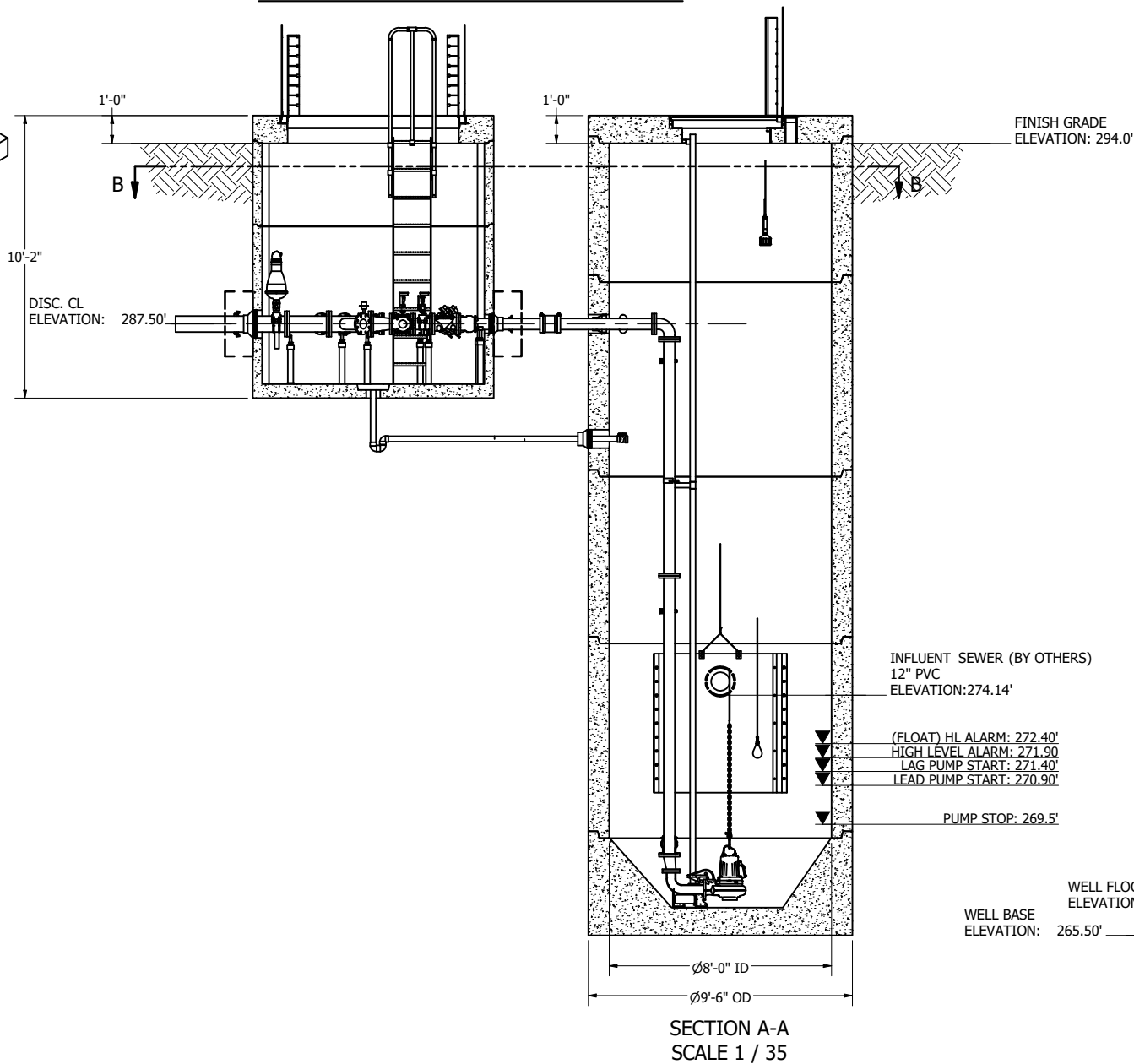


12" THICK CAST-IN-PLACE CONCRETE
THRUST RESTRAINT COLLAR ON EACH END.
(BY OTHERS)

FORCE MAIN (BY OTHERS)
SIZE: 6"
TYPE: DUCTILE IRON



NOTE: TOP SLAB AND HATCH ARE
H-20 OCCASIONAL TRAFFIC RATED



PUMP PACKAGE

INITIAL CONFIGURATION: DUPLEX

FINAL CONFIGURATION: TRIPLEX

MODEL: NP3102SH

HP: 6.5HP

INITIAL DUTY POINT: 333GPM @ 37.8TDH

FINAL DUTY POINT: 510GPM @ 53.06TDH

FEATURES

HATCH: H-20 OCCASIONAL

DISCHARGE PIPING: 4" DUCTILE IRON

PRIMARY LEVEL SENSING: ULTRASONIC TRANSDUCER

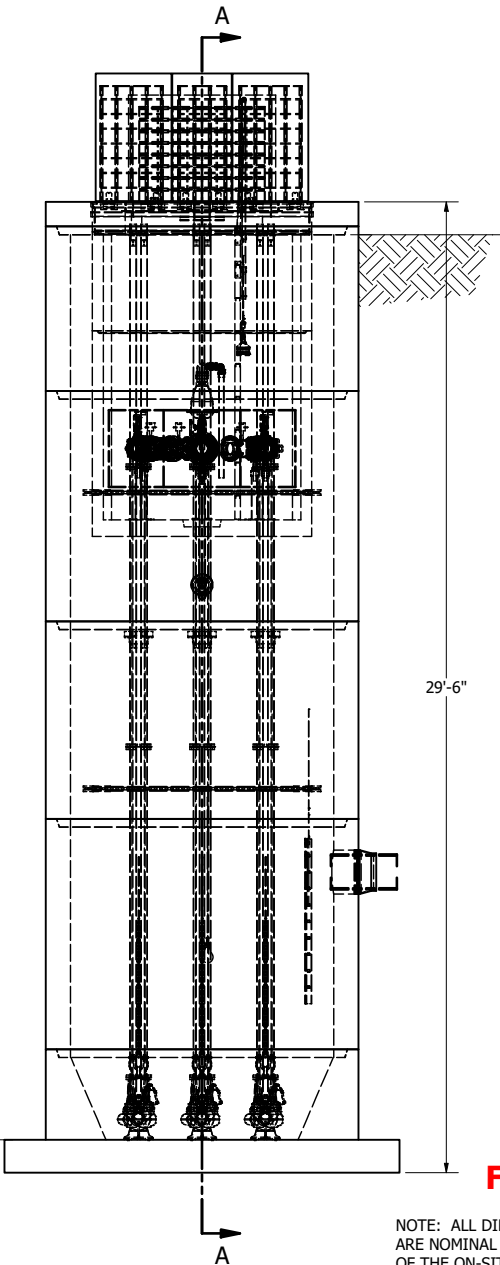
BACKUP LEVEL SENSING: (1) FLOAT

STAINLESS STEEL GUIDE RAILS

QUICK CONNECT DISCHARGE ELBOWS

AIR RELEASE VALVE

SAFETY GRATE



FOR DESIGN REVIEW

NOTE: ALL DIMENSIONS AND ELEVATIONS SHOWN
ARE NOMINAL DIMENSIONS. IT IS THE RESPONSIBILITY
OF THE ON-SITE CONTRACTOR OR ROMTEC UTILITIES
CUSTOMER (NOT ROMTEC UTILITIES) TO VERIFY THE
ACCURACY OF ANY CRITICAL DIMENSIONS OR ELEVATIONS
PRIOR TO SETTING OR INSTALLING ANY EQUIPMENT.

NOTE:
CONDUIT TO CONTROL PANEL (BY OTHERS)
MINIMUM:
(3) FOR POWER
(1) FOR LEVEL SENSING

ALL MATERIALS SHOWN ON THIS SHEET WILL BE SUPPLIED
BY ROMTEC UTILITIES AND DELIVERED TO THE SITE AFTER
THE HOLE HAS BEEN EXCAVATED AND SHORED. THE
CONTRACTOR SHALL SUPPLY A CRANE OF SUFFICIENT SIZE
TO LOWER ALL THE CONCRETE PIECES INTO THE HOLE
SAFELY. THE CONTRACTOR SHALL INSTALL THE WET WELL
(AND VALVE VAULT AND METERING VAULT IF APPLICABLE).
ROMTEC UTILITIES WILL PROVIDE A REPRESENTATIVE FOR
TECHNICAL ASSISTANCE ON THE DAY OF INSTALLATION TO
ANSWER ANY QUESTIONS THAT MAY ARISE. THE
CONTRACTOR IS RESPONSIBLE FOR ALL PLUMBING AND
ELECTRICAL CONNECTIONS AND INSTALLATION. ITEMS
NOTED AS "BY OTHERS" WILL BE PROVIDED AND
INSTALLED BY THE CONTRACTOR. ROMTEC UTILITIES WILL
NOT INSTALL ANY OF THE COMPONENTS SHOWN ON THIS
PAGE.

ROMTEC
UTILITIES

© 2020 ROMTEC INC. ALL RIGHTS RESERVED.
THESE PLANS AND DRAWINGS MAY NOT BE
REPRODUCED, ADAPTED, OR FURTHER
DISTRIBUTED, AND NO COMPONENTS MAY BE
CONSTRUCTED FROM THESE PLANS, WITHOUT
WRITTEN PERMISSION OF ROMTEC, INC.

REVISION HISTORY		REVISION HISTORY	
REV	DATE	DESCRIPTION	BY
0	12/22/21	INITIAL DESIGN	RD

VERIFY SCALE DRAWINGS ARE TO BE USED FOR CONSTRUCTION ONLY. DO NOT SCALE & COPY FOR OTHER USES.	DATE: 12/21/21
DSN: RD	DATE: 12/21/21
DRN: RD	
CKD:	

ROMTEC
UTILITIES
18240 NORTH BANK ROAD
ROSEBURG, OREGON 97470
PHONE: (541) 496-9678
WWW.ROMTECUTILITIES.COM

HLA6 CAPROCK PH II
VISALIA, CA
SYSTEM

MECHANICAL SHEET
2 OF 3