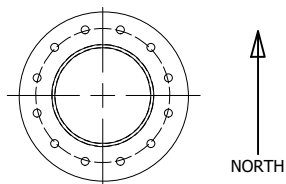
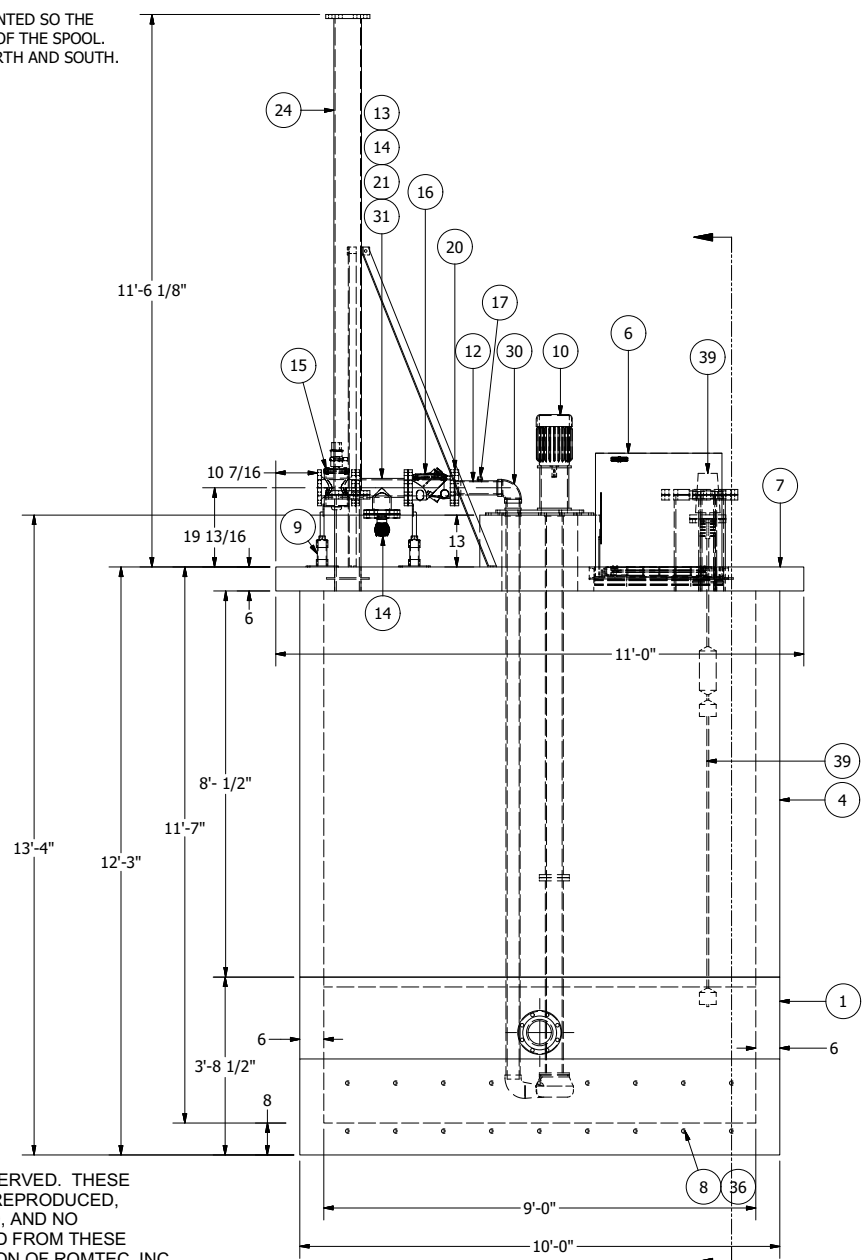


NOTE:

ALL FLANGES ON SPOOLS ARE TO BE ORIENTED SO THE BOLT HOLES STRADDLE THE CENTERLINE OF THE SPOOL. THE CENTERLINE OF THE SPOOLS ARE NORTH AND SOUTH. SEE SAMPLE DRAWING BELOW.

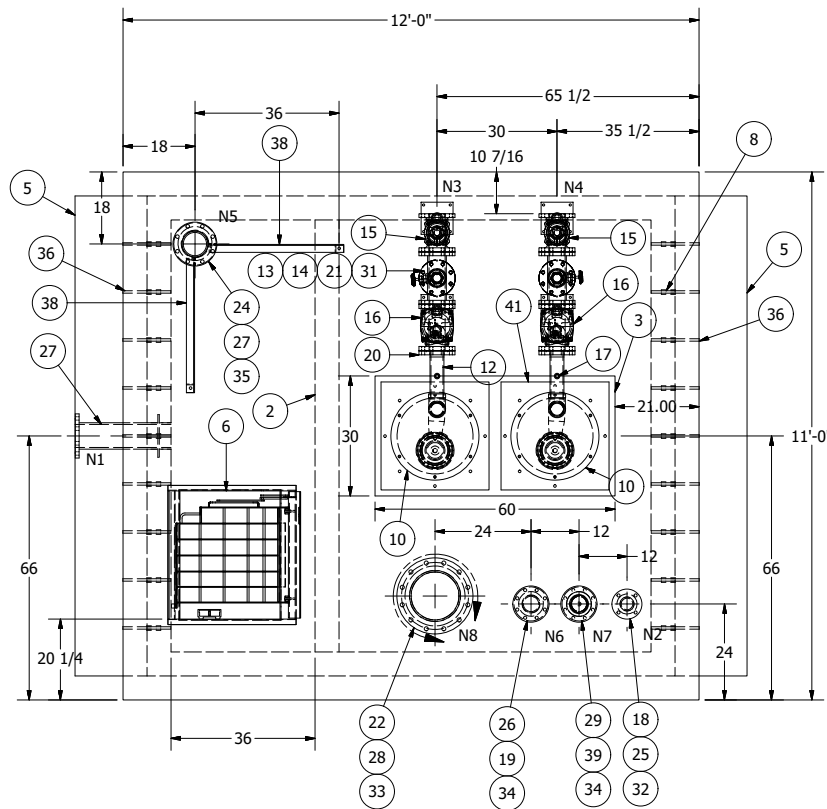


NOTE:
FOR THE ONE SPOOL LOCATED ON THE WALL OF THE VESSEL THE ORIENTATION IS WITH NORTH GOING UP THE WALL. THE BOLT HOLES TO BE STRADDLING NORTH ALSO.

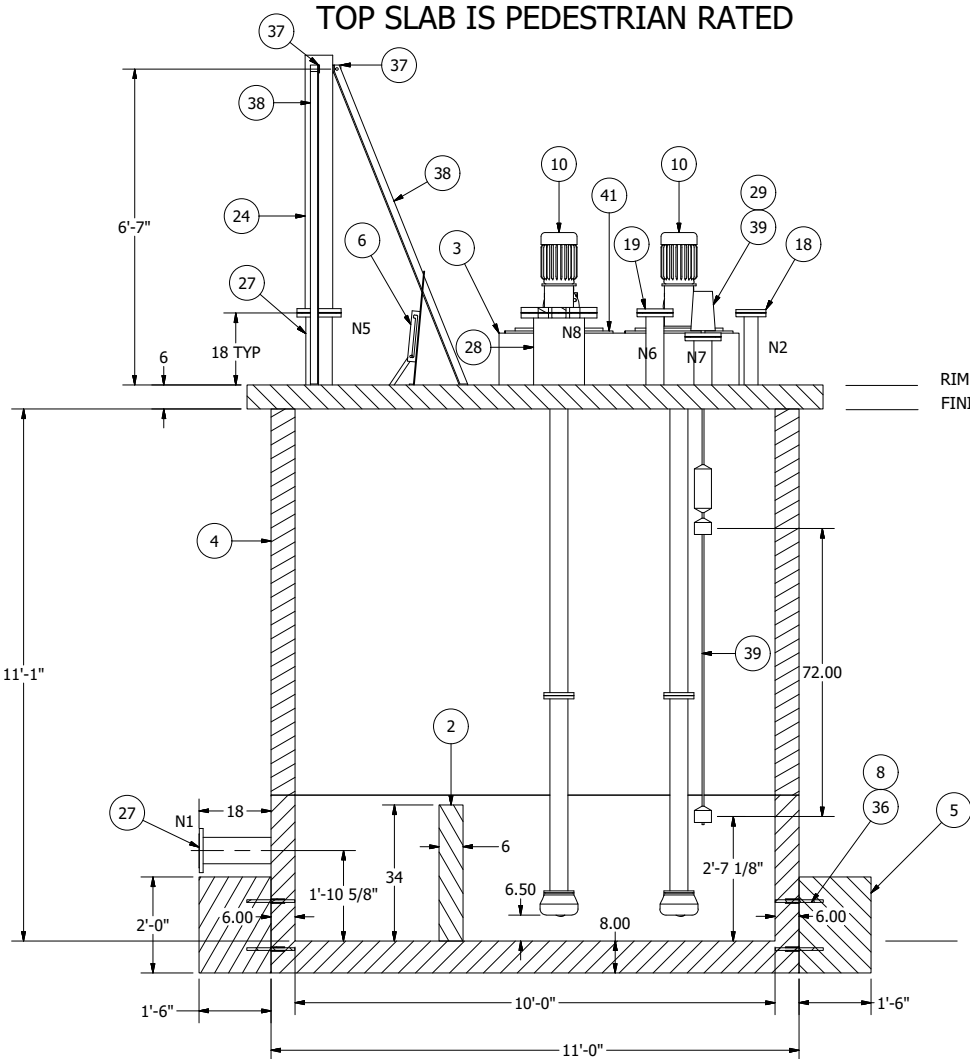


© 2011 ROMTEC INC. ALL RIGHTS RESERVED. THESE PLANS AND DRAWINGS MAY NOT BE REPRODUCED, ADAPTED, OR FURTHER DISTRIBUTED, AND NO COMPONENTS MAY BE CONSTRUCTED FROM THESE PLANS, WITHOUT WRITTEN PERMISSION OF ROMTEC, INC.

NORTH



TOP SLAB IS PEDESTRIAN RATED



TRUCK ACCESS FROM THIS SIDE

RIM ELEVATION - 100.58'
FINISHED GRADE ELEVATION - 100.08'

WELL FLOOR ELEVATION - 89.00'

NOTE:
BOUYANCY CALCULATIONS ARE CALCULATED WITH COMPACTED NATIVE BACKFILL IN 1 FOOT LIFTS.

NOTE: ALL DIMENSIONS AND ELEVATIONS SHOWN ARE NOMINAL DIMENSIONS. IT IS THE RESPONSIBILITY OF THE ON-SITE CONTRACTOR OR ROMTEC UTILITIES CUSTOMER (NOT ROMTEC UTILITIES) TO VERIFY THE ACCURACY OF ANY CRITICAL DIMENSIONS OR ELEVATIONS PRIOR TO SETTING OR INSTALLING ANY EQUIPMENT.

ALL MATERIALS SHOWN ON THIS SHEET WILL BE SUPPLIED BY ROMTEC UTILITIES AND DELIVERED TO THE SITE AFTER THE HOLE HAS BEEN EXCAVATED AND SHORED. THE CONTRACTOR SHALL SUPPLY A CRANE OF SUFFICIENT SIZE TO LOWER ALL THE CONCRETE PIECES INTO THE HOLE SAFELY. THE CONTRACTOR SHALL INSTALL THE WET WELL (AND VALVE VAULT AND METERING VAULT IF APPLICABLE). ROMTEC UTILITIES WILL PROVIDE A REPRESENTATIVE FOR TECHNICAL ASSISTANCE ON THE DAY OF INSTALLATION TO ANSWER ANY QUESTIONS THAT MAY ARISE. THE CONTRACTOR IS RESPONSIBLE FOR ALL PLUMBING AND ELECTRICAL CONNECTIONS AND INSTALLATION. ITEMS NOTED AS "BY OTHERS" WILL BE PROVIDED AND INSTALLED BY THE CONTRACTOR. ROMTEC UTILITIES WILL NOT INSTALL ANY OF THE COMPONENTS SHOWN ON THIS PAGE.

REV	DESCRIPTION	DATE	APPROV
1	COMPONENT DRAWING	02/29/12	AM
2	UPDATED CONCRETE VAULT PER PRECASTER	03/06/12	AM
3	REVISED PER 3/7 - 3/9 COMMENTS	3/15/12	AD
4	REVISED PUMP RISER	3/22/12	AD
5	REVISED PER PRECASTER DRAWINGS	3/28/12	AD
6	REVISED VALVES PER COMMENTS	4/3/12	AD
7	REVISOR PER COMMENTS	5/2/12	AD
8	ORIENTATION NOTE	5/11/12	AD
9	REVISED UPLIFT BLOCK, ADDED SPOOL	5/23/12	AD
10	REVISED PER 5/21/12 & 5/23/12 COMMENTS	5/23/12	AD
11	REVISED FLOAT SWITCH TO MAGNETROL	6/4/12	AD
12	ADDED PUMP MOUNTING PLATE	7/10/12	AD

DRAWING GEOMETRY IS ACCURATE AS SHOWN. THIS DRAWING IS NOT TO SCALE. DO NOT SCALE THIS DRAWING.
DSN - AM
DRN - AM
CKD - AM
DATE - 02/29/12

COMPONENT DRAWING

ROMTEC UTILITIES
18240 NORTH BANK ROAD
ROSEBURG, OREGON 97470
(541) 496-9678
FAX (541) 496-0804

AUDOBON ENGINEERING
BERT RANDAZZO

AJAX GAS PLANT
RECTANGULAR PUMP VESSEL

SHEET
1 OF 1

JOB NUMBER
RMTC
0000