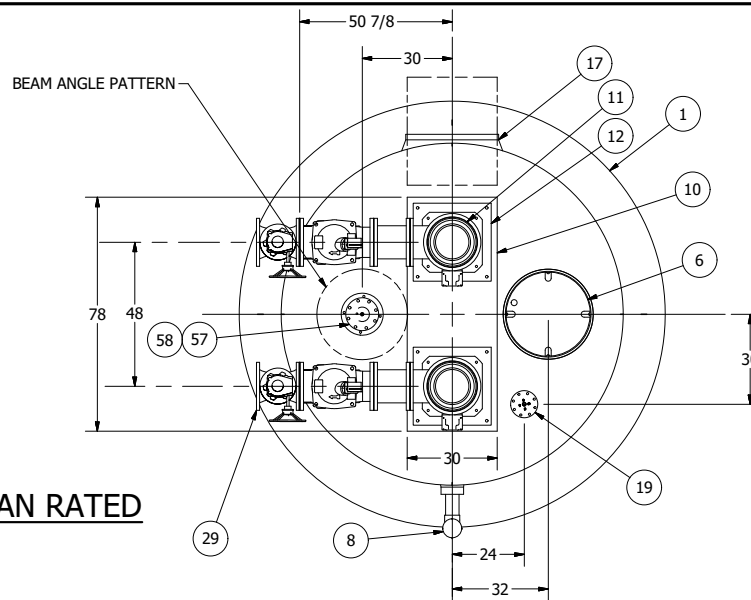


SENSOR AND ELEVATION TABLE		
LEVEL ELEVATION	DISTANCE BETWEEN POINTS	SET POINT DESCRIPTION
208.17		WATER INVERT IN
221.00		HIGH LEVEL ALARM
	0.50	SENSOR SPACING
220.50		LAG PUMP START
	0.50	SENSOR SPACING
220.00		LEAD PUMP START
	14.00	SENSOR SPACING
206.00		PUMP STOP
	3.50	DISTANCE TO FLOOR
202.50		FLOOR ELEVATION

NOTE: WET WELL TOP SLAB IS PEDESTRIAN RATED

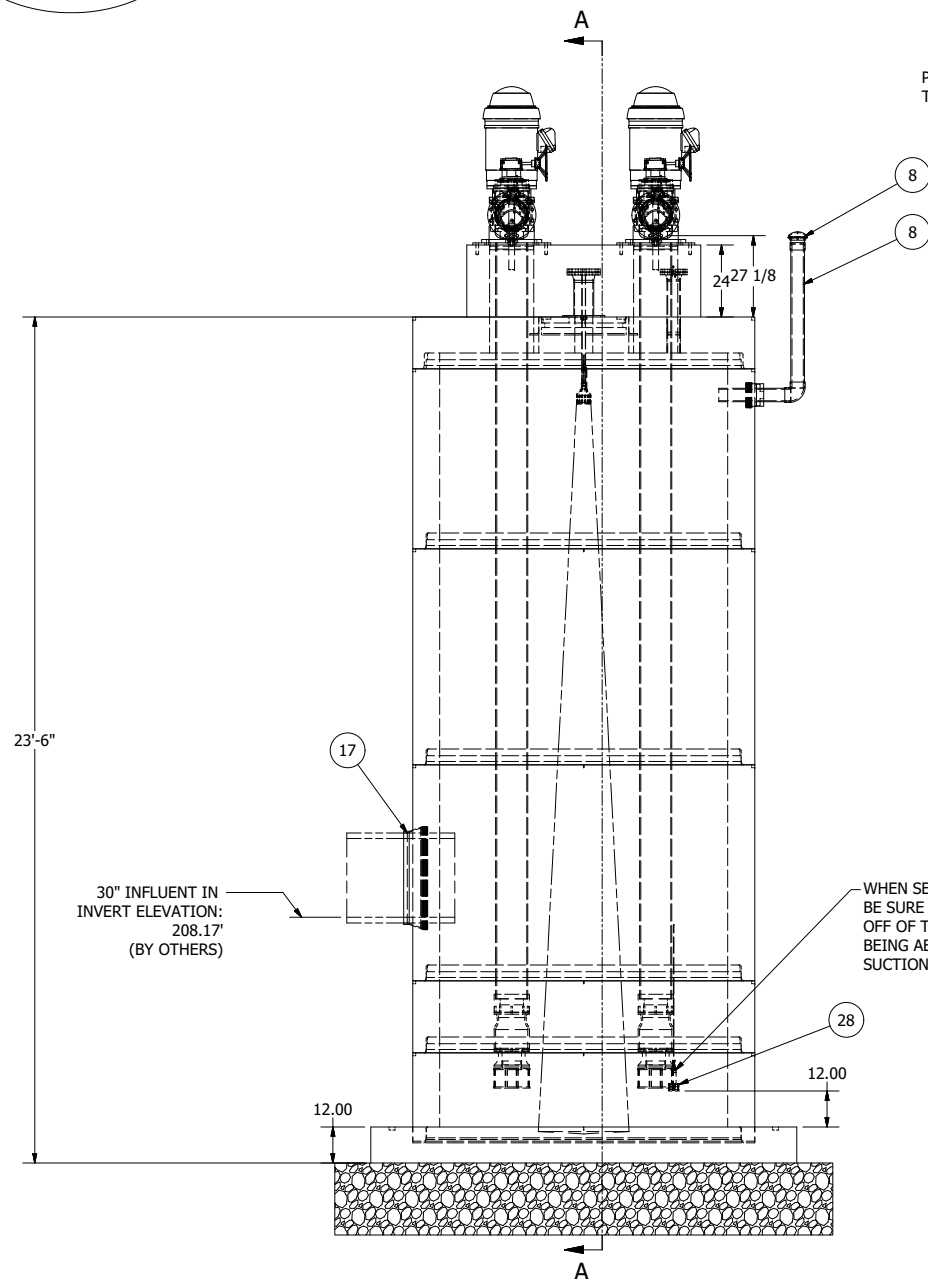


PLUG VALVE IS USED TO INCREASE THE TDH FOR THE SYSTEM IF IT IS ACTUALLY LOWER THAN WHAT IS ANTICIPATED.

PIPE STANDS NOT SHOWN

RIM ELEVATION - 225.00'

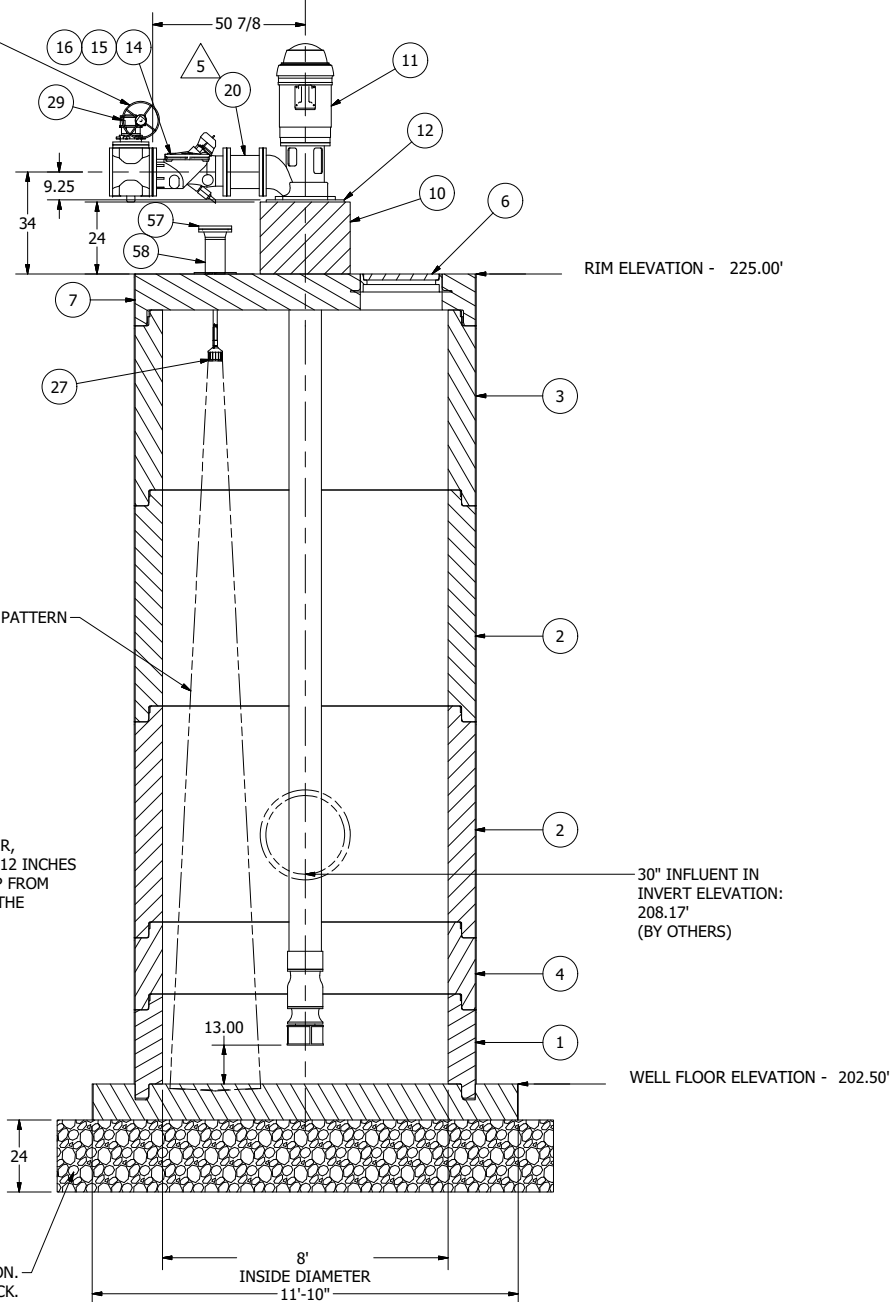
WELL FLOOR ELEVATION - 202.50'



TRANSDUCER BEAM ANGLE PATTERN

WHEN SETTING UP THE PRESSURE TRANSDUCER, BE SURE TO KEEP THE TRANSDUCER AT LEAST 12 INCHES OFF OF THE FLOOR. THIS WILL KEEP THE PUMP FROM BEING ABLE TO SUCK THE TRANSDUCER INTO THE SUCTION BELL.

BASE ROCK COMPACTED TO 95% COMPACTION. 1" CRUSHED ROCK. ROCK IS SUPPLIED BY OTHERS NOT ROMTEC UTILITIES.



SECTION A-A
SCALE 1/32

NOTE: ALL DIMENSIONS AND ELEVATIONS SHOWN ARE NOMINAL DIMENSIONS. IT IS THE RESPONSIBILITY OF THE ON-SITE CONTRACTOR OR ROMTEC UTILITIES CUSTOMER (NOT ROMTEC UTILITIES) TO VERIFY THE ACCURACY OF ANY CRITICAL DIMENSIONS OR ELEVATIONS PRIOR TO SETTING OR INSTALLING ANY EQUIPMENT.

**8' DIAMETER WET WELL
10" DISCHARGE PIPING
30HP GOULDS TURBINE**

ALL MATERIALS SHOWN ON THIS SHEET WILL BE SUPPLIED BY ROMTEC UTILITIES AND DELIVERED TO THE SITE AFTER THE HOLE HAS BEEN EXCAVATED AND SHORED. THE CONTRACTOR SHALL SUPPLY A CRANE OF SUFFICIENT SIZE TO LOWER ALL THE CONCRETE PIECES INTO THE HOLE SAFELY. THE CONTRACTOR SHALL INSTALL THE WET WELL (AND VALVE VAULT AND METERING VAULT IF APPLICABLE). ROMTEC UTILITIES WILL PROVIDE A REPRESENTATIVE FOR TECHNICAL ASSISTANCE ON THE DAY OF INSTALLATION TO ANSWER ANY QUESTIONS THAT MAY ARISE. THE CONTRACTOR IS RESPONSIBLE FOR ALL PLUMBING AND ELECTRICAL CONNECTIONS AND INSTALLATION. ITEMS NOTED AS "BY OTHERS" WILL BE PROVIDED AND INSTALLED BY THE CONTRACTOR. ROMTEC UTILITIES WILL NOT INSTALL ANY OF THE COMPONENTS SHOWN ON THIS PAGE.

© 2011 ROMTEC INC. ALL RIGHTS RESERVED. THESE PLANS AND DRAWINGS MAY NOT BE REPRODUCED, ADAPTED, OR FURTHER DISTRIBUTED, AND NO COMPONENTS MAY BE CONSTRUCTED FROM THESE PLANS, WITHOUT WRITTEN PERMISSION OF ROMTEC, INC.

8	ADDED PRESSURE TRANSDUCER NOTE AND REVISED QTY FOR SEALANT FOR PRODUCTION	6/28-12	AD
7	ADDED PLUG VALVE TO ASSEMBLY	2/1/12	AD
6	REVISED PER 12/20/11 COMMENTS	1/11/12	AD
5	REVISED PER 9/9-11 COMMENTS	12-21-11	AD
4	PUMP CHANGED TO 30HP	9-16-11	AD
3	REVISED PER 9/8/11 COMMENTS	9-9-11	AD
2	REVISED P.T. AND ADDED POWER CABLE NOTE	9-1-11	AD
1	COMPONENT DRAWING	8-25-11	AD
REV	DESCRIPTION	DATE	APPROV

VERIFY SCALE
BAR IS ONE INCH ON ORIGINAL DRAWING
1"
0
IF NOT ONE INCH ON THIS SHEET, ADJUST SIZES PROPORTIONALLY
DSN - AD
DRN - AD
CKD - AD
DATE - 8-25-11

REVISION HISTORY

COMPONENT DRAWING

ROMTEC UTILITIES
18240 NORTH BANK ROAD
ROSEBURG, OREGON 97470
(541) 496-9678
FAX (541) 496-0804

KEVIN BRANDT

MIRALOMA RECHARGE BASIN

8' WET WELL W/ TURBINE PUMPS

SHEET
1 OF 2

JOB NUMBER
RMTC
0000