

5515.93
 - 5514.65

 1.28

$\frac{1.28}{167.32} = 0.007 \text{ Slope}$

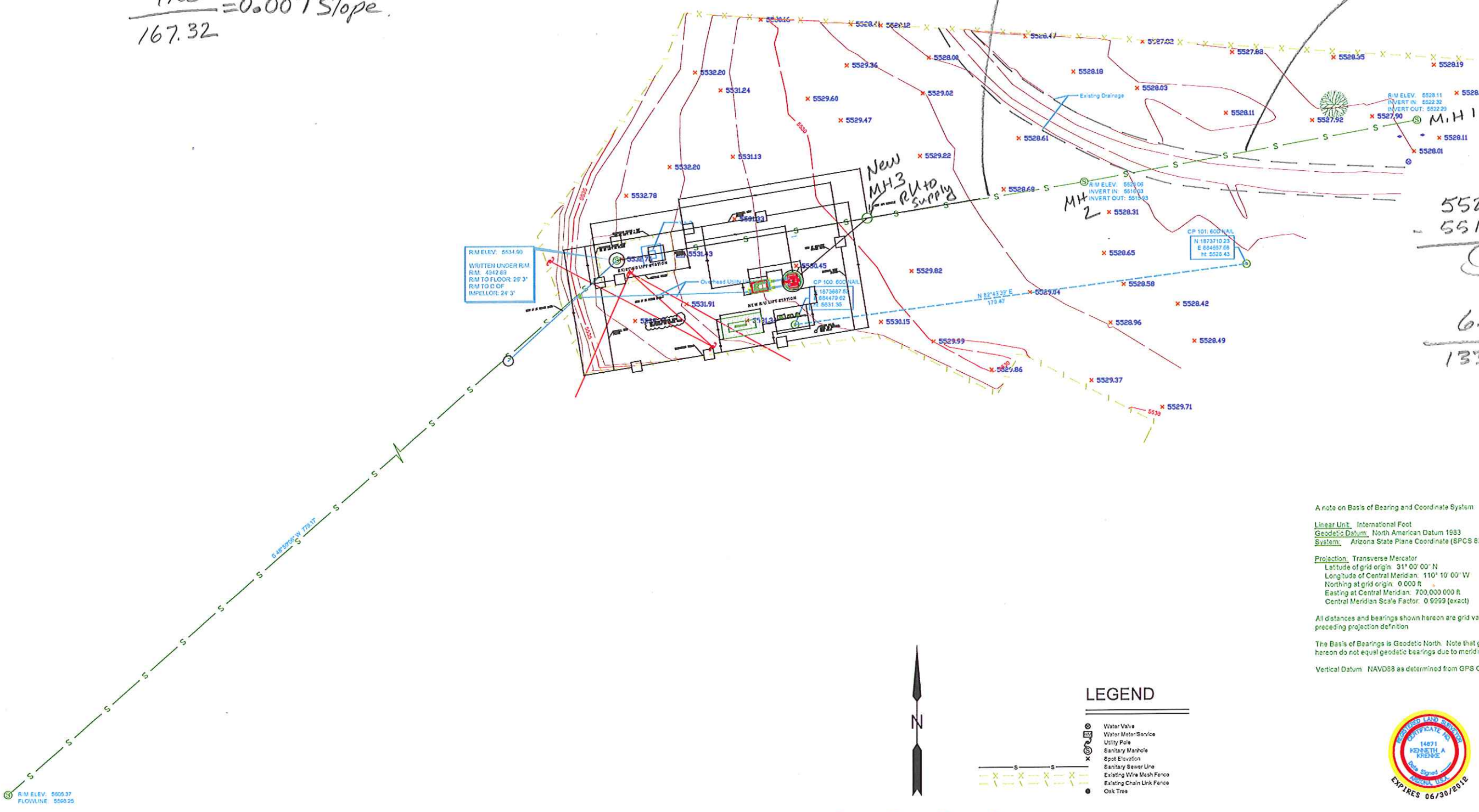
5532.76 F.G. at existing L.S.
 - 18.11

 5514.65 maybe the inlet.

18.11 ft below
 grade is what was
 given to us originally

167.32'

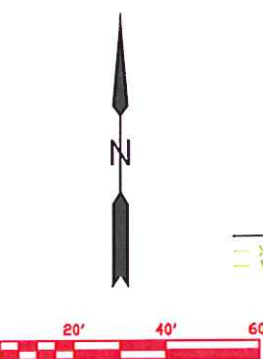
133.29'



5522.29 M.H.1
 - 5516.03 M.H.2

 6.26'
 drop
 $\frac{6.26}{133.29} = 0.047$
 4.7%

R.M. ELEV. 5534.90
 WRITTEN UNDER R.M.
 R.M. 4342.63
 R.M. TO FLOOR: 29' 3"
 R.M. TO TOP OF
 IMPELLOR: 24' 5"



- LEGEND**
- ⊙ Water Valve
 - ⊕ Water Meter/Service
 - ⊙ Utility Pole
 - ⊙ Sanitary Manhole
 - ⊙ Spot Elevation
 - Sanitary Sewer Line
 - - - Existing Wire Mesh Fence
 - - - Existing Chain Link Fence
 - Oak Tree

A note on Basis of Bearing and Coordinate System:
 Linear Unit: International Foot
 Geodetic Datum: North American Datum 1983
 System: Arizona State Plane Coordinate (SPCS 83 AZ E, 201)
 Projection: Transverse Mercator
 Latitude of grid origin: 31° 00' 00" N
 Longitude of Central Meridian: 110° 10' 00" W
 Northing at grid origin: 0.000 ft
 Easting at Central Meridian: 700,000.000 ft
 Central Meridian Scale Factor: 0.9999 (exact)
 All distances and bearings shown hereon are grid values based on the preceding projection definition.
 The Basis of Bearings is Geodetic North. Note that grid bearings shown hereon do not equal geodetic bearings due to meridional convergence.
 Vertical Datum: NAVD83 as determined from GPS Observations



Northland Exploration Surveys, Inc.
 628 West Aspen Avenue, Flagstaff, Arizona 86001 (928) 774-0008 FAX (928) 774-5009

SCALE 1" = 20 ft.	TOPOGRAPHIC SURVEY OF	SHEET
SURVEYOR J. WINTERS	EXISTING PUMPING STATION	OF
DRAWN K. KRENKE		JOB NO.
CHECKED K. A. KRENKE	at Canyon De Chelly, situated in Section 22, Township 5 North, Range 10 West, Navajo Special Meridian, Chino, Arizona.	10-025
DATE 21 June, 2010		