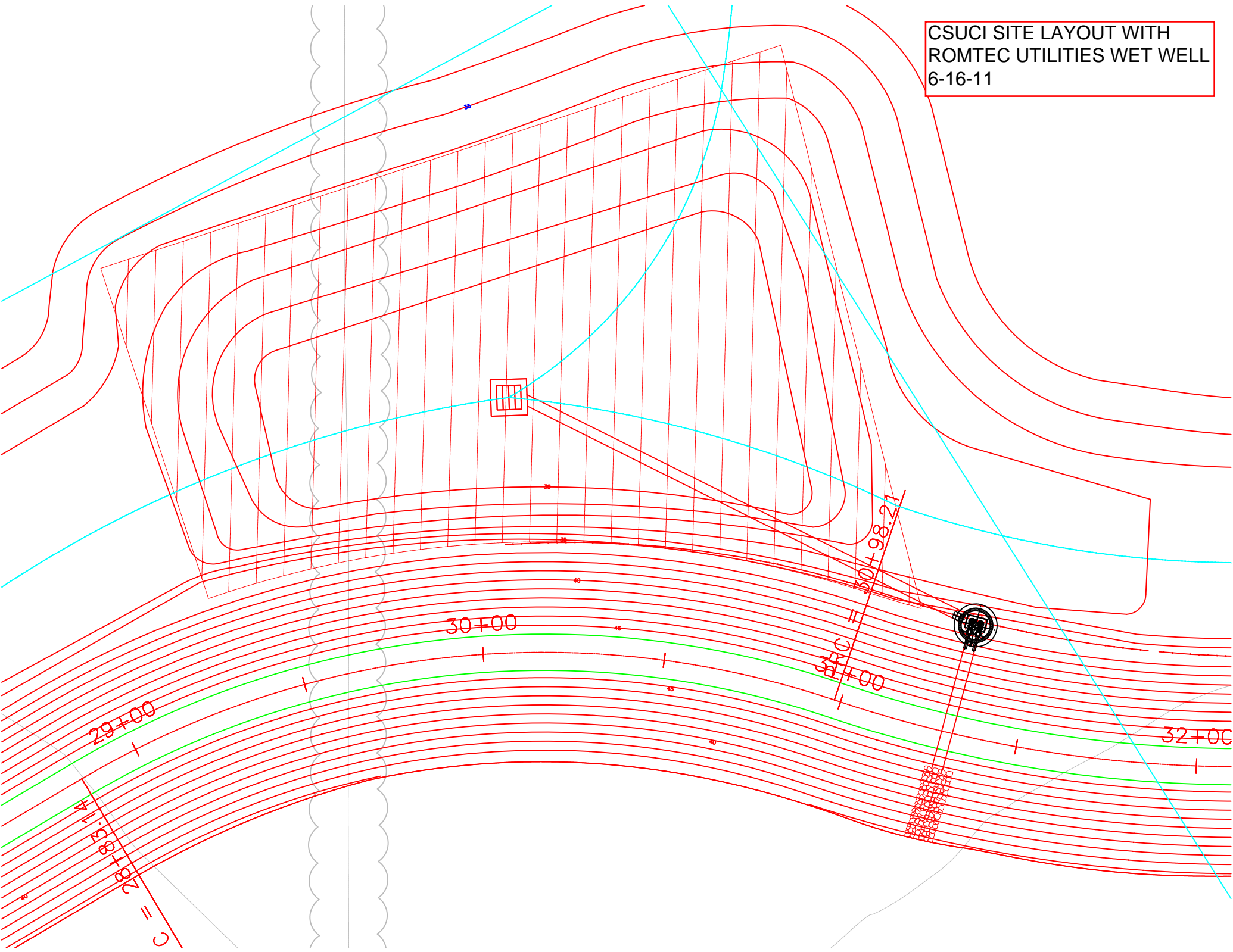
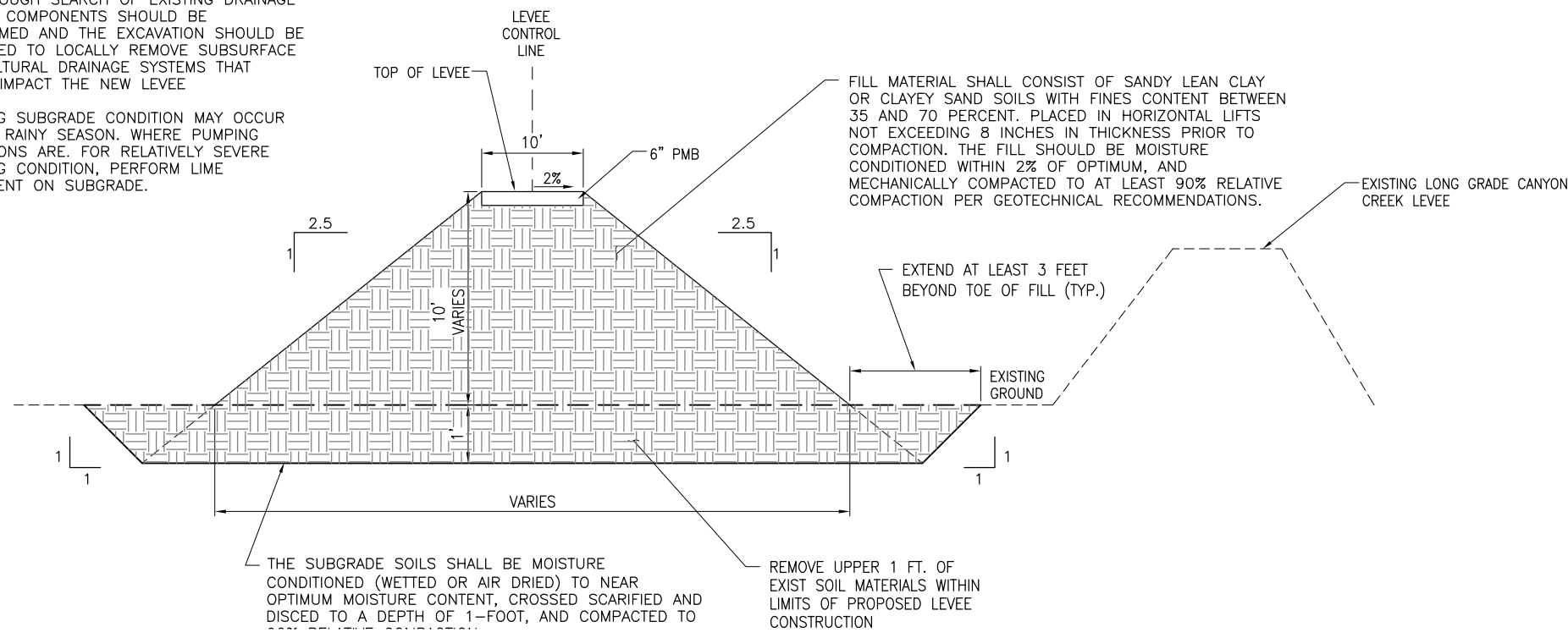


CSUCI SITE LAYOUT WITH
ROMTEC UTILITIES WET WELL
6-16-11

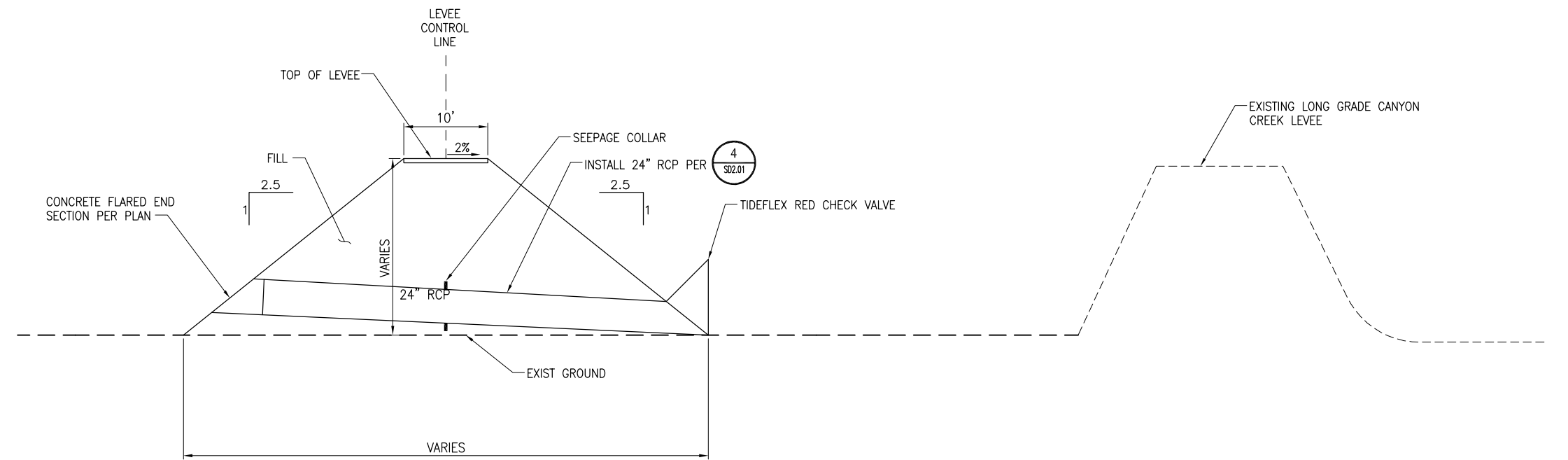


CONSTRUCTION NOTES

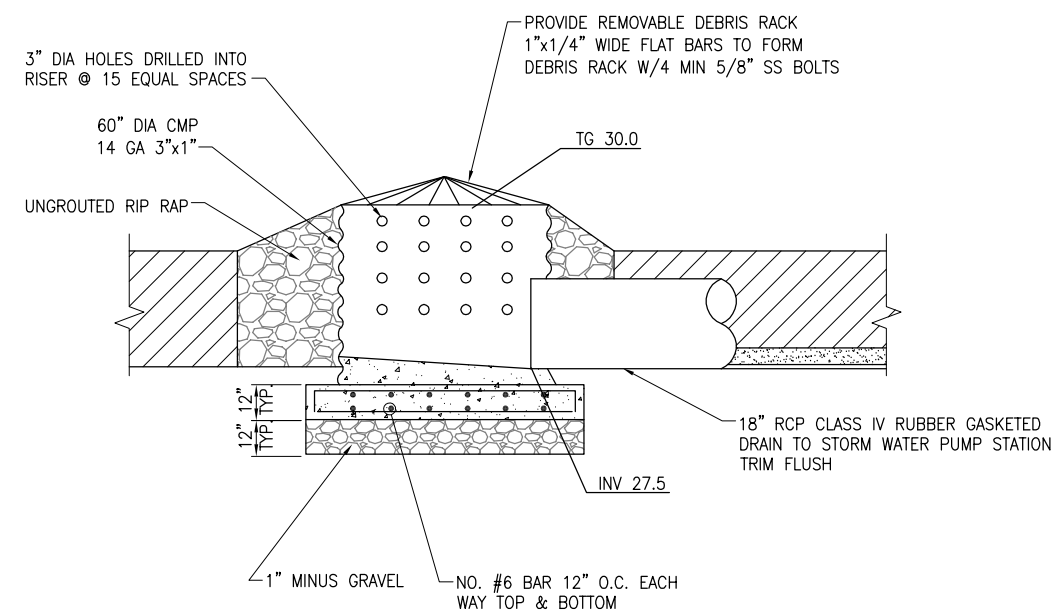
1. REMOVE EXISTING SUBSURFACE AGRICULTURAL DRAINAGE SYSTEMS FROM BENEATH THE LEVEE, ON THE WATER SIDE OF THE LEVEE, AND WITHIN 10 TO 20 FEET OF THE LEVEE TOE ON THE LAND SIDE.
2. A THOROUGH SEARCH OF EXISTING DRAINAGE SYSTEM COMPONENTS SHOULD BE PERFORMED AND THE EXCAVATION SHOULD BE DEEPEMED TO LOCALLY REMOVE SUBSURFACE AGRICULTURAL DRAINAGE SYSTEMS THAT COULD IMPACT THE NEW LEVEE.
3. PUMPING SUBGRADE CONDITION MAY OCCUR DURING RAINY SEASON. WHERE PUMPING CONDITIONS ARE FOR RELATIVELY SEVERE PUMPING CONDITION, PERFORM LIME TREATMENT ON SUBGRADE.



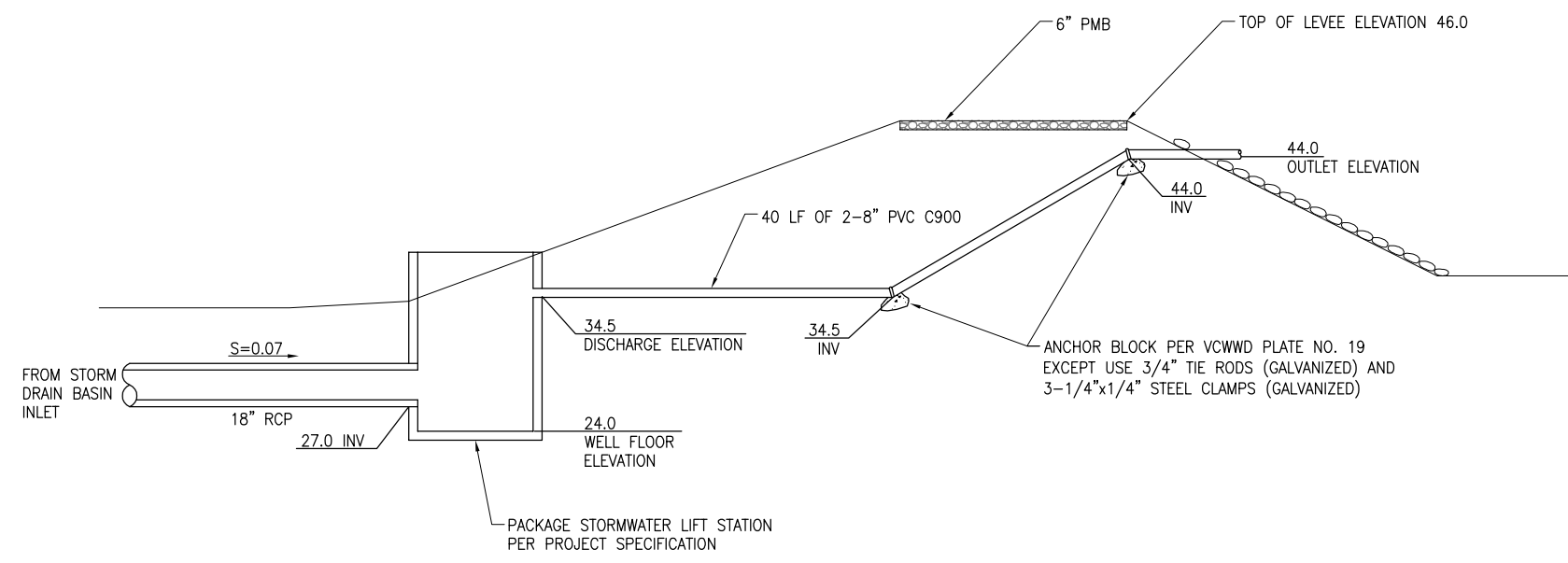
TYPICAL LEVEE SECTION 1
SCALE: 1"=8' HORIZ.
1"=16' VERT.



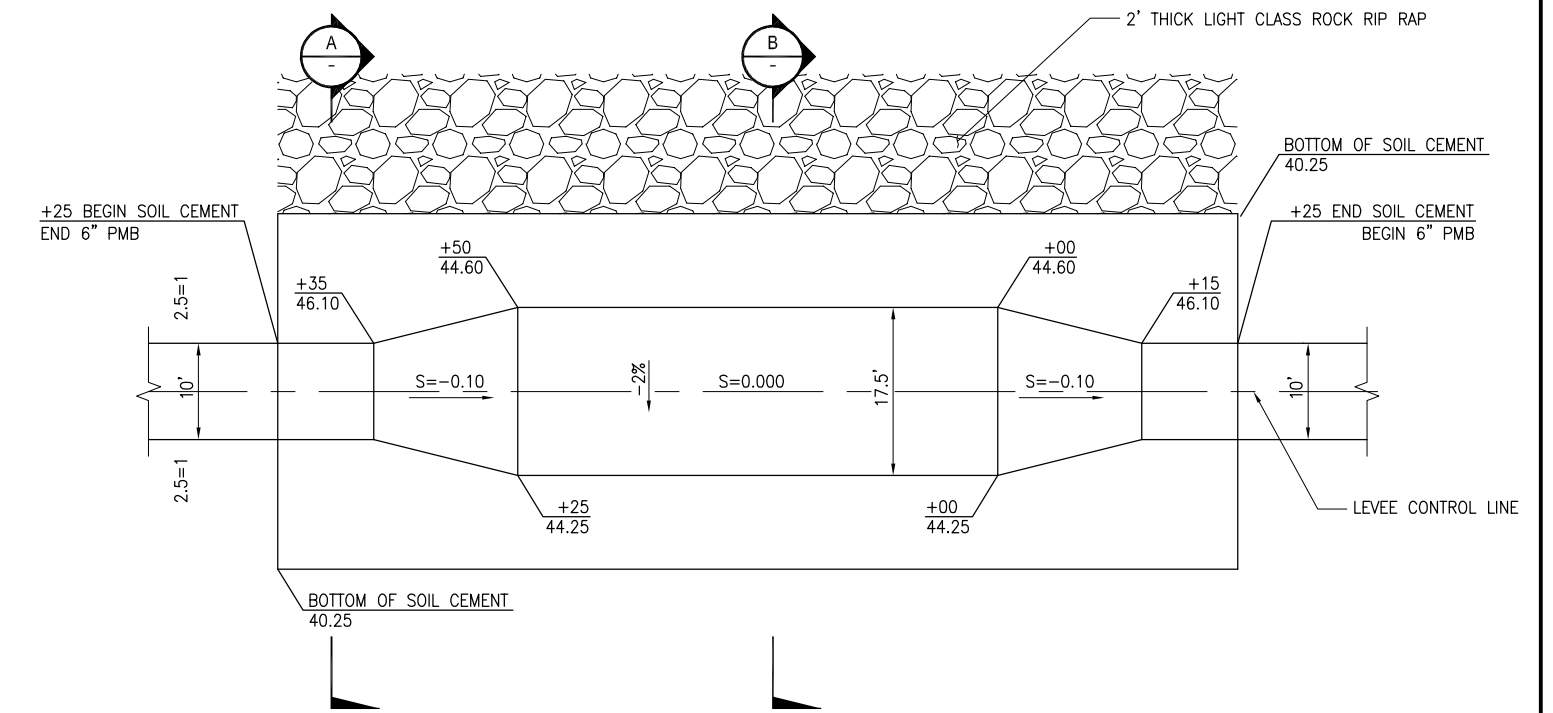
TYPICAL SECTION AT 24" RCP 2
SCALE: 1"=8' HORIZ.
1"=16' VERT.



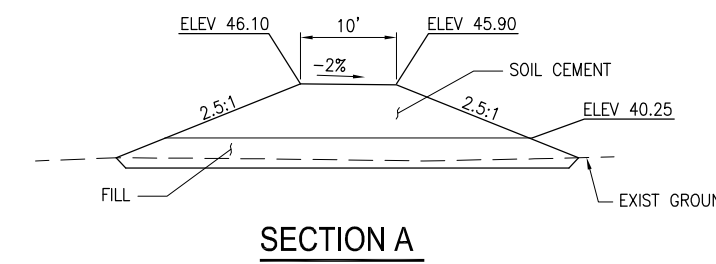
STORM DRAIN BASIN INLET 3
SCALE: NOT TO SCALE



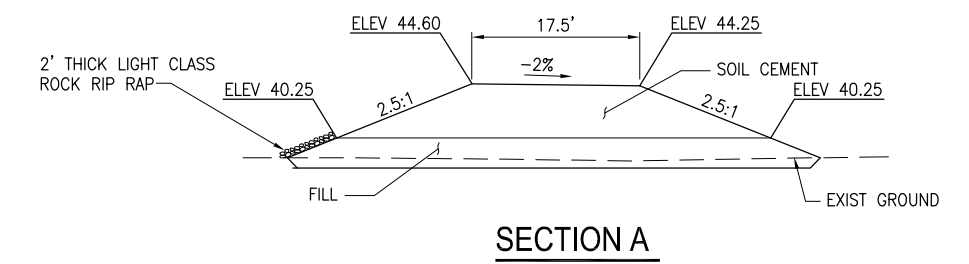
PACKAGE STORMWATER LIFT STATION 4
SCALE: NOT TO SCALE



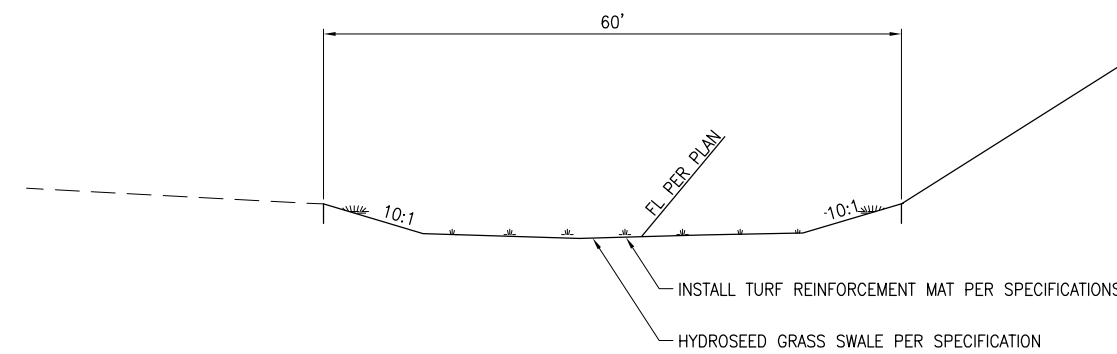
SOIL CEMENT NOTCH DETAIL 6
SCALE: 1"=10'



SECTION A



SECTION A



TYPICAL GRASS SWALE SECTION 5
SCALE: NOT TO SCALE

DWG: F:\CS\CA\21074\02 - 60061708 (Final) - Plotted by: Davis, Aaron Date: 5/27/2010 - 9:34 AM
 Design: 0001\CAD\Parish\Levee\LV-202.dwg Layout Name: Layout1
 XREFS: 11102BPR

REV. NO.	DATE	DESCRIPTION	REV. NO.	DATE	DESCRIPTION
05-21-10		ISSUED FOR BID			

AECOM

5851 Thille Street
 Ventura, California 93003
 T (805) 644-9704 F (805) 642-8277
 www.aecom.com

CALIFORNIA STATE UNIVERSITY
 CHANNEL ISLANDS
 ENTRANCE ROAD
 IMPROVEMENT PROJECT

CIVIL ENGINEER
 STATE OF CALIFORNIA
 No. 4967
 EXP. 03/31/11

CALIFORNIA STATE UNIVERSITY
 CHANNEL ISLANDS
 ENTRANCE ROAD
 IMPROVEMENT PROJECT

MANAGER DESIGNER ISSUE DATE SHEET NO.
 DRAWN CHECKED SCALE

MASTER FILE SHEET TITLE
 REFERENCE FILES

LEVEE TYPICAL SECTION AND DETAILS

MANAGER DESIGNER ISSUE DATE SHEET NO.
 DRAWN CHECKED SCALE

LV2.02