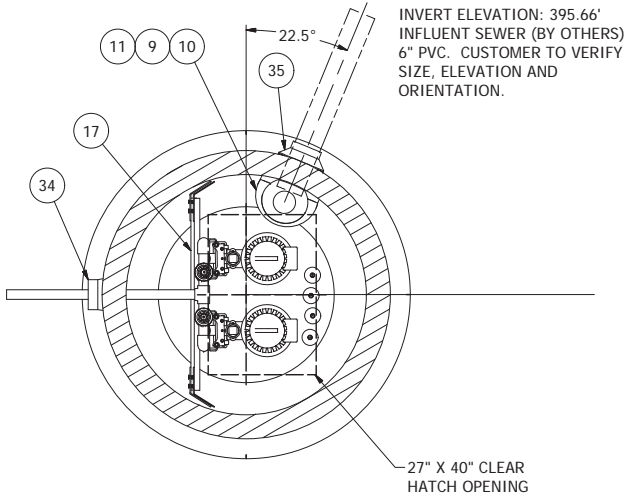
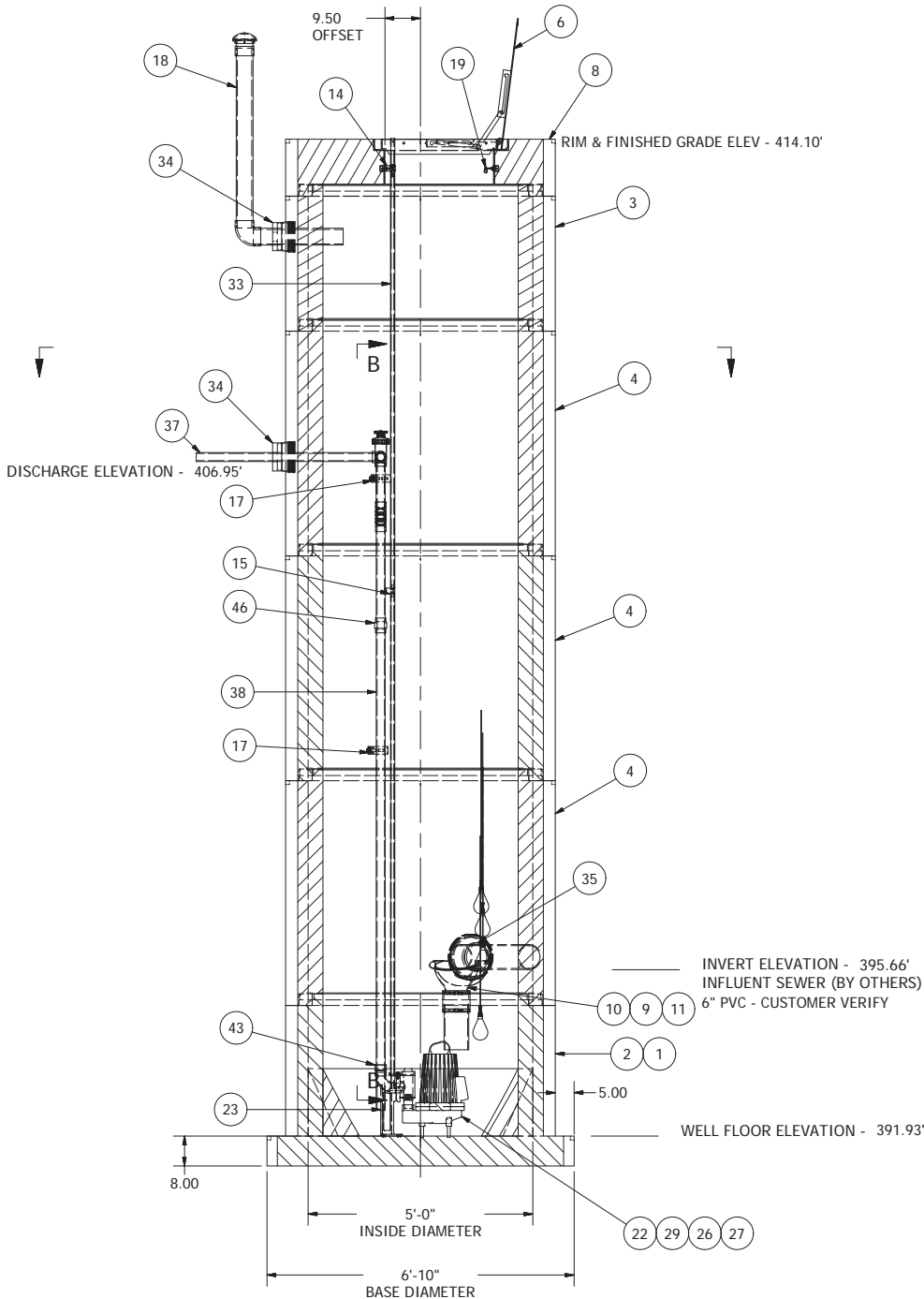
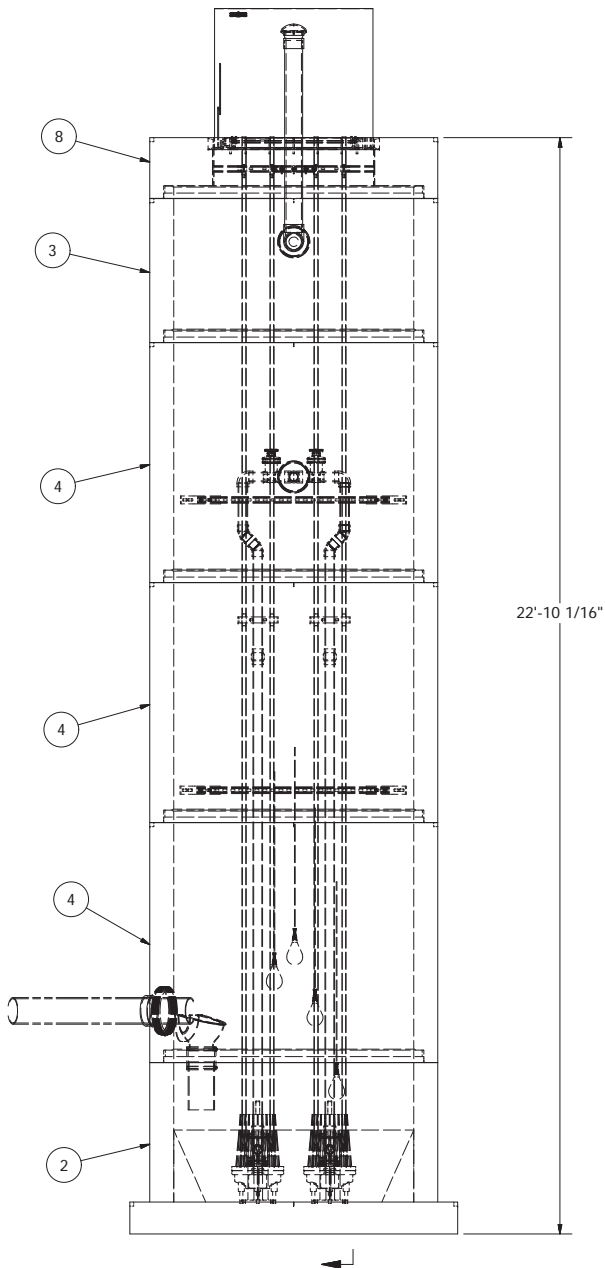
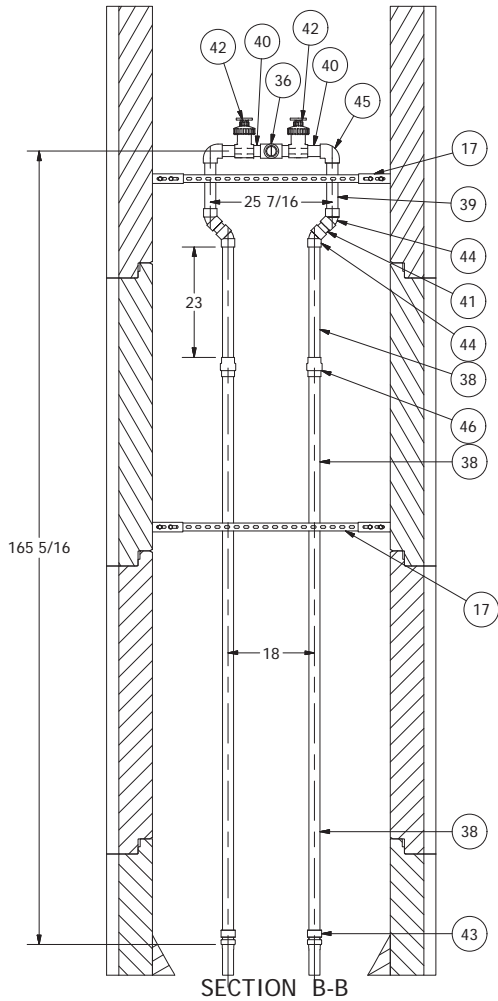


SENSOR AND ELEVATION TABLE		
LEVEL ELEVATION	DISTANCE BETWEEN POINTS	SET POINT DESCRIPTION
395.66		SEWER INVERT IN
395.60		HIGH LEVEL ALARM
	0.33	SENSOR SPACING
395.27		LAG PUMP START
	0.50	SENSOR SPACING
394.77		LEAD PUMP START
	0.84	SENSOR SPACING
393.93		PUMP STOP
	2.00	DISTANCE TO FLOOR
391.93		FLOOR ELEVATION



7	REVISED FOR PRODUCTION	2-10-12	AD
---	------------------------	---------	----

NOTE: WET WELL TOP SLAB IS H-20 OCCASIONAL TRAFFIC RATED



NOTE: ALL DIMENSIONS AND ELEVATIONS SHOWN ARE NOMINAL DIMENSIONS. IT IS THE RESPONSIBILITY OF THE ON-SITE CONTRACTOR OR ROMTEC UTILITIES CUSTOMER (NOT ROMTEC UTILITIES) TO VERIFY THE ACCURACY OF ANY CRITICAL DIMENSIONS OR ELEVATIONS PRIOR TO SETTING OR INSTALLING ANY EQUIPMENT.

5' DIAMETER WET WELL 2" DISCHARGE PIPING GOULDS PUMP - 2GA81H1KDXJ

ALL MATERIALS SHOWN ON THIS SHEET WILL BE SUPPLIED BY ROMTEC UTILITIES AND DELIVERED TO THE SITE AFTER THE HOLE HAS BEEN EXCAVATED AND SHORED. THE CONTRACTOR SHALL SUPPLY A CRANE OF SUFFICIENT SIZE TO LOWER ALL THE CONCRETE PIECES INTO THE HOLE SAFELY. THE THE CONTRACTOR SHALL INSTALL THE WET WELL (AND VALVE VAULT AND METERING VAULT IF APPLICABLE). ROMTEC UTILITIES WILL PROVIDE A REPRESENTATIVE FOR TECHNICAL ASSISTANCE ON THE DAY OF INSTALLATION TO ANSWER ANY QUESTIONS THAT MAY ARISE. THE CONTRACTOR IS RESPONSIBLE FOR ALL PLUMBING AND ELECTRICAL CONNECTIONS AND INSTALLATION. ITEMS NOTED AS "BY OTHERS" WILL BE PROVIDED AND INSTALLED BY THE CONTRACTOR. ROMTEC UTILITIES WILL NOT INSTALL ANY OF THE COMPONENTS SHOWN ON THIS PAGE.

© 2009 ROMTEC INC. ALL RIGHTS RESERVED. THESE PLANS AND DRAWINGS MAY NOT BE REPRODUCED, ADAPTED, OR FURTHER DISTRIBUTED, AND NO COMPONENTS MAY BE CONSTRUCTED FROM THESE PLANS, WITHOUT WRITTEN PERMISSION OF ROMTEC, INC.

REVISIONS		DATE	
REV	DESCRIPTION	DATE	BY
1	COMPONENT DRAWING	06/19/09	AM
2	UPDATED TO CURRENT DESIGN PRACTICES	08/31/11	AD
3	UPDATED TO GRINDER PUMP	11/15/11	AD
4	REVISED PER 11/16/11 COMMENTS	11/18/11	AD
5	REVISED PUMP TO BE SIZED FOR 3" FORCE MAIN	12-14-11	AD
6	CHANGED INLET ORIENTATION AND RIM ELEVATION	2/1/12	AD

COMPONENT DRAWING

**ROMTEC
UTILITIES**
18240 NORTH BANK ROAD
ROSEBURG, OREGON 97470
(541) 496-9678
FAX (541) 496-0804

BLAIR CHURCH & FLYNN
FRANK SEN
CITY OF PORTERVILLE
2" - 5' WET WELL

SHEET
1 OF 1
JOB NUMBER
RMTC
0000