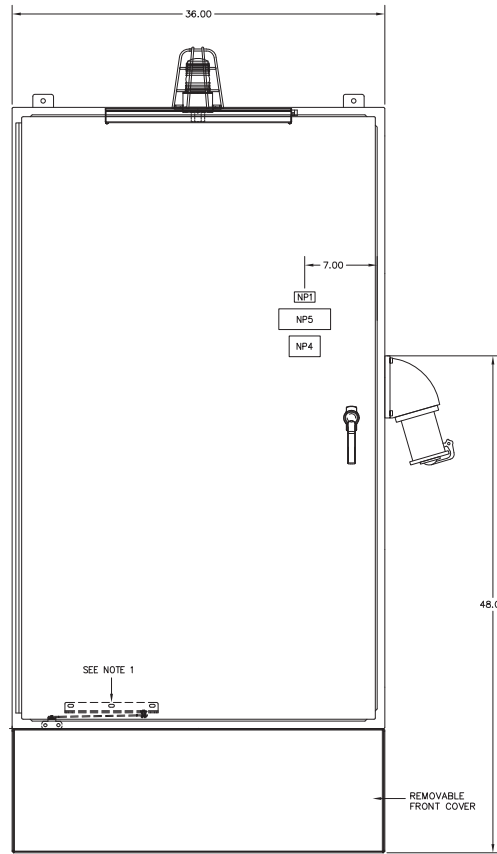
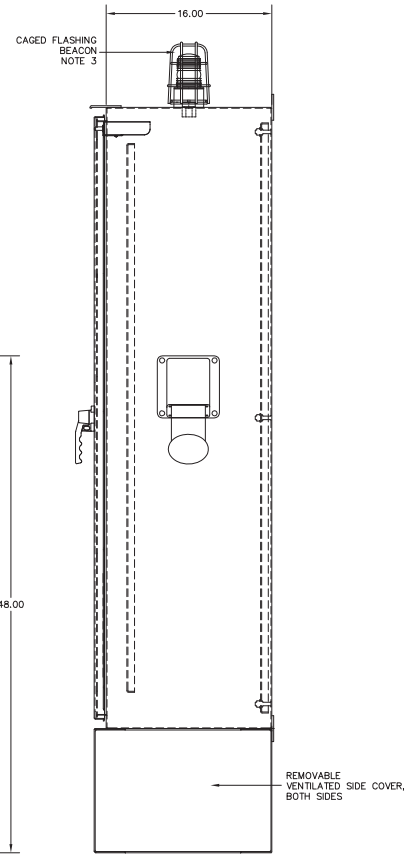


L.H. SIDE VIEW

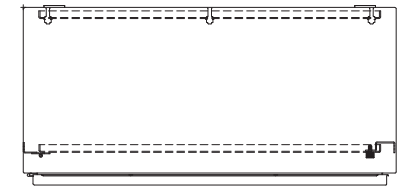


FRONT VIEW



R.H. SIDE VIEW

- NOTES:
1. SCE-DSTOPYK POSITIONED FOR 135 DEGREE STOP.
  2. ATTACH COPY OF SCHEMATIC TO INSIDE OF DOOR. SEE ENGINEER FOR COPY OF SCHEMATIC.
  3. ATTACH SEALING RING FOR BEACON ON INSIDE OF ENCLOSURE.



PANEL TOP VIEW



**ROMTEC UTILITIES**  
 18240 NORTH BANK ROAD - ROSEBURG, OR 97470  
 (541)-496-3541 FAX (541)-496-0803

**TOLERANCES**  
 UNLESS OTHERWISE NOTED  
 ALL DIMENSIONS ARE IN INCHES

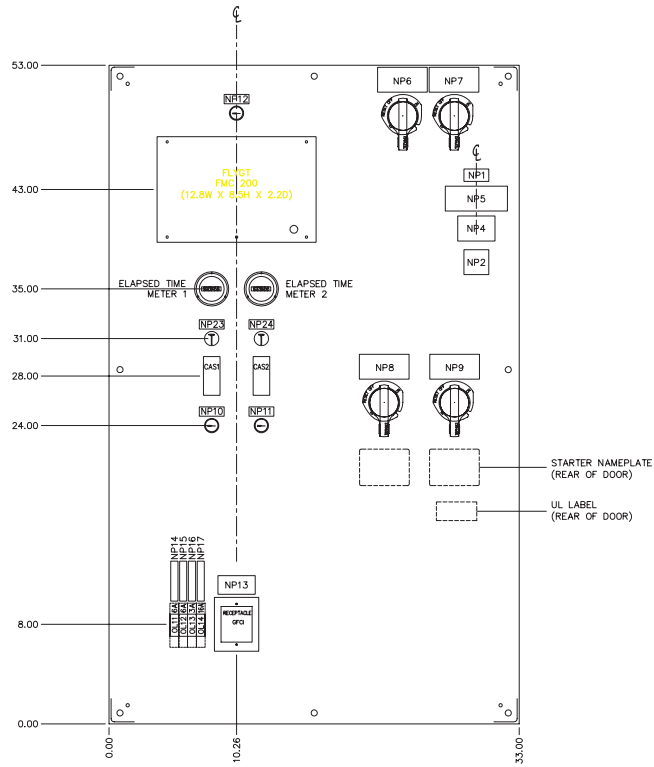
**GE Engineered Control Solutions**

GE Engineered Control Solutions  
 2025 W Beltline RD Suite 100  
 Carrollton, Texas 75006  
 Phone: (972) 389-7700

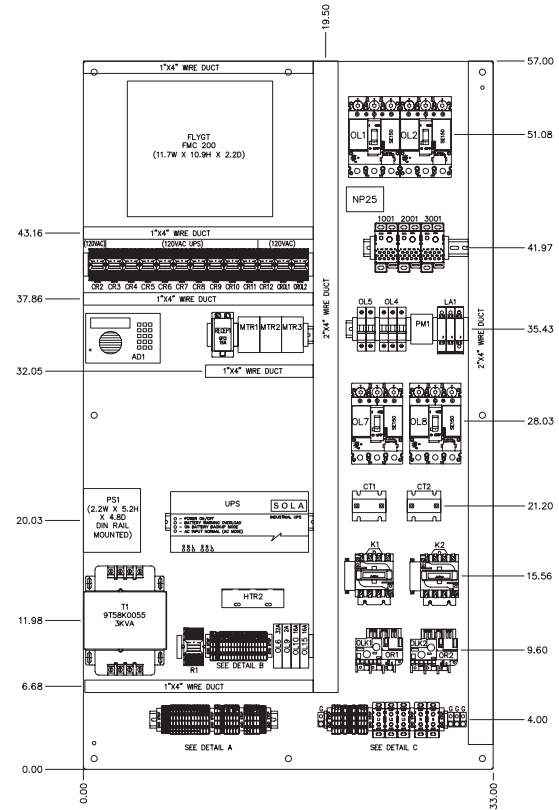
REV	DATE	BY	DESCRIPTION	ECN#	APPVL	FRACTIONS	ANGLE	SCALE	SHEET
B	04/09/07	PKD	APPROVED FOR PANEL CONSTRUCTION			.XX	+/- .05	DESIGNED: P. DANG	DATE: 03/30/07
A	03/30/07	PKD	DESIGN			.X	+/- .1	DRAWN: P. DANG	DATE: 03/30/07
						X	.5	CHECKED: J. FRIDAY	DATE: 03/31/07
								SCALE: NA	SHEET: 3 OF 11

ROMTEC UTILITY  
 CHARTER OAKS II - ST. HELENA, CA  
 7.5HP PUMPS  
 CONTROL PANEL LAYOUT

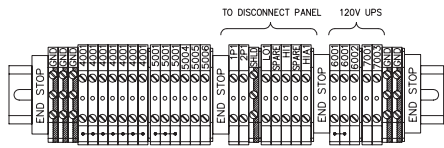
340000343-0501



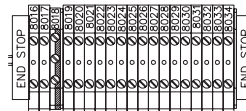
SWING PANEL FRONT VIEW



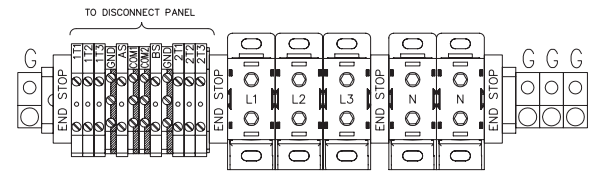
SUB-PANEL FRONT VIEW



DETAIL A



DETAIL B



DETAIL C



18240 NORTH BANK ROAD - ROSEBURG, OR 97470  
(541)-496-3541 FAX (541)-498-0803

**TOLERANCES**  
UNLESS OTHERWISE NOTED  
ALL DIMENSIONS ARE IN INCHES



GE Engineered Control Solutions  
2025 W Beltline RD Suite 100  
Carrollton, Texas 75006  
Phone: (972) 389-7700

REV	DATE	BY	DESCRIPTION	ECN#	APPL	FRACTIONS	SCALE	SHEET
B	04/09/07	PKD	APPROVED FOR PANEL CONSTRUCTION			.XX .X	+/- .05 +/- .1	DESIGNED: P. DANG DATE: 03/30/07
A	03/30/07	PKD	DESIGN			X ANGLE	+/- .5 +/- 1"	DRAWN: P. DANG DATE: 03/30/07
								CHECKED: J. FRIDAY DATE: 03/31/07
								SCALE: NA SHEET: 4 OF 11

ROMTEC UTILITY  
CHARTER OAKS II - ST. HELENA, CA  
7.5HP PUMPS  
CONTROL PANEL - SUBPANEL & SWING DOOR LAYOUT

340000343-0502