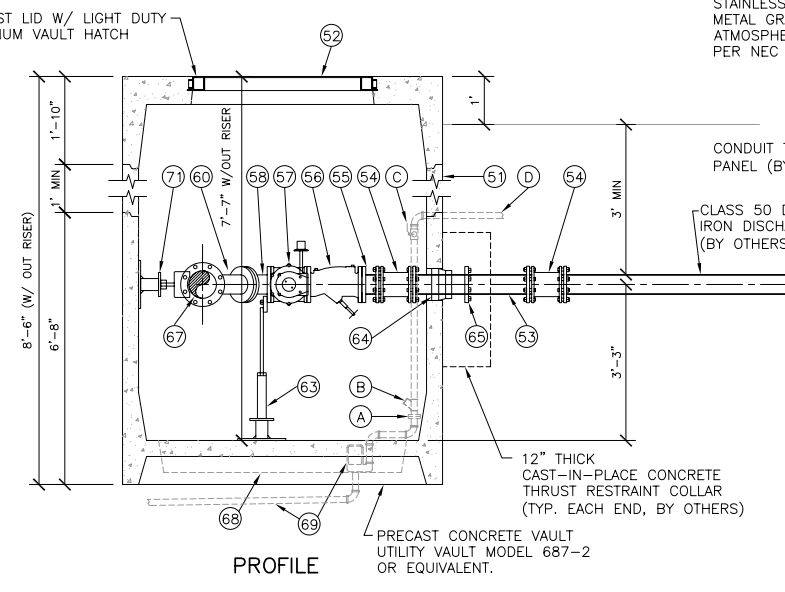
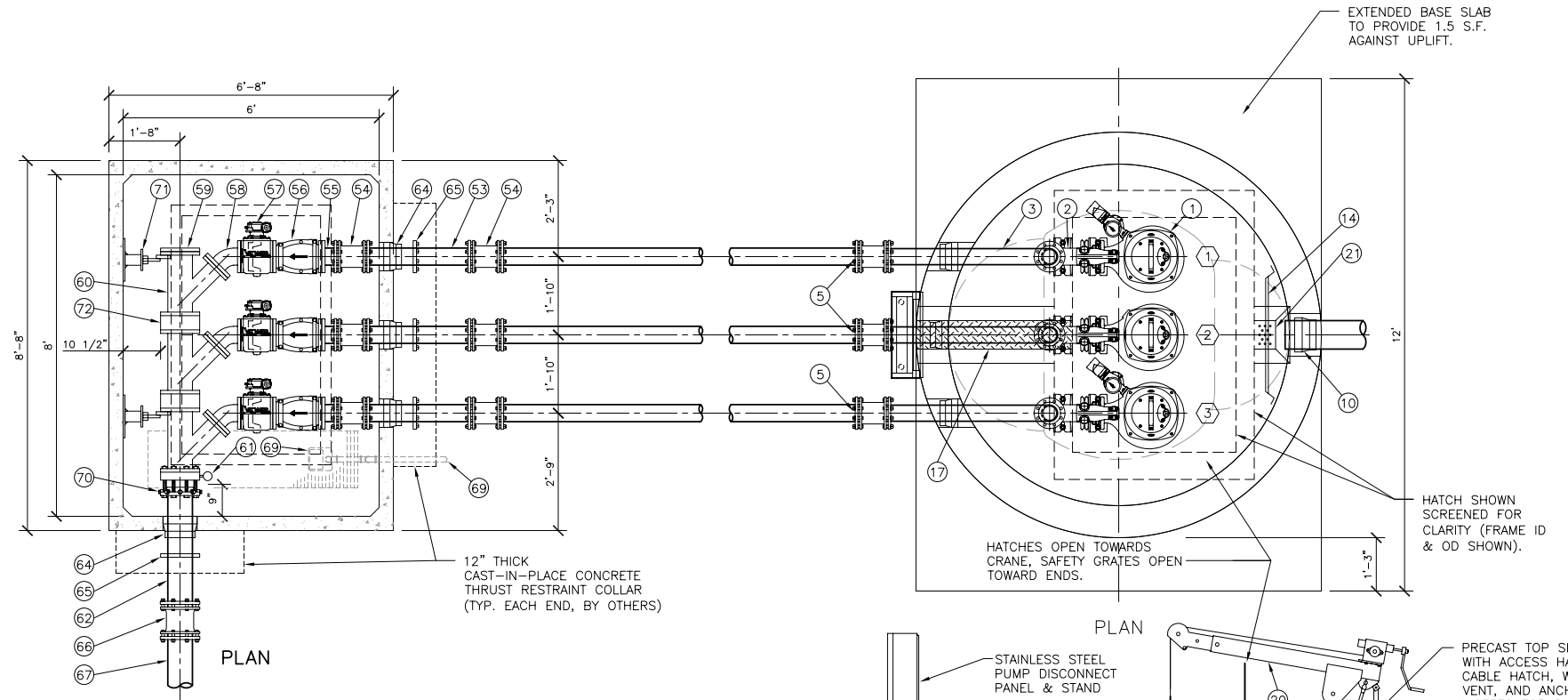


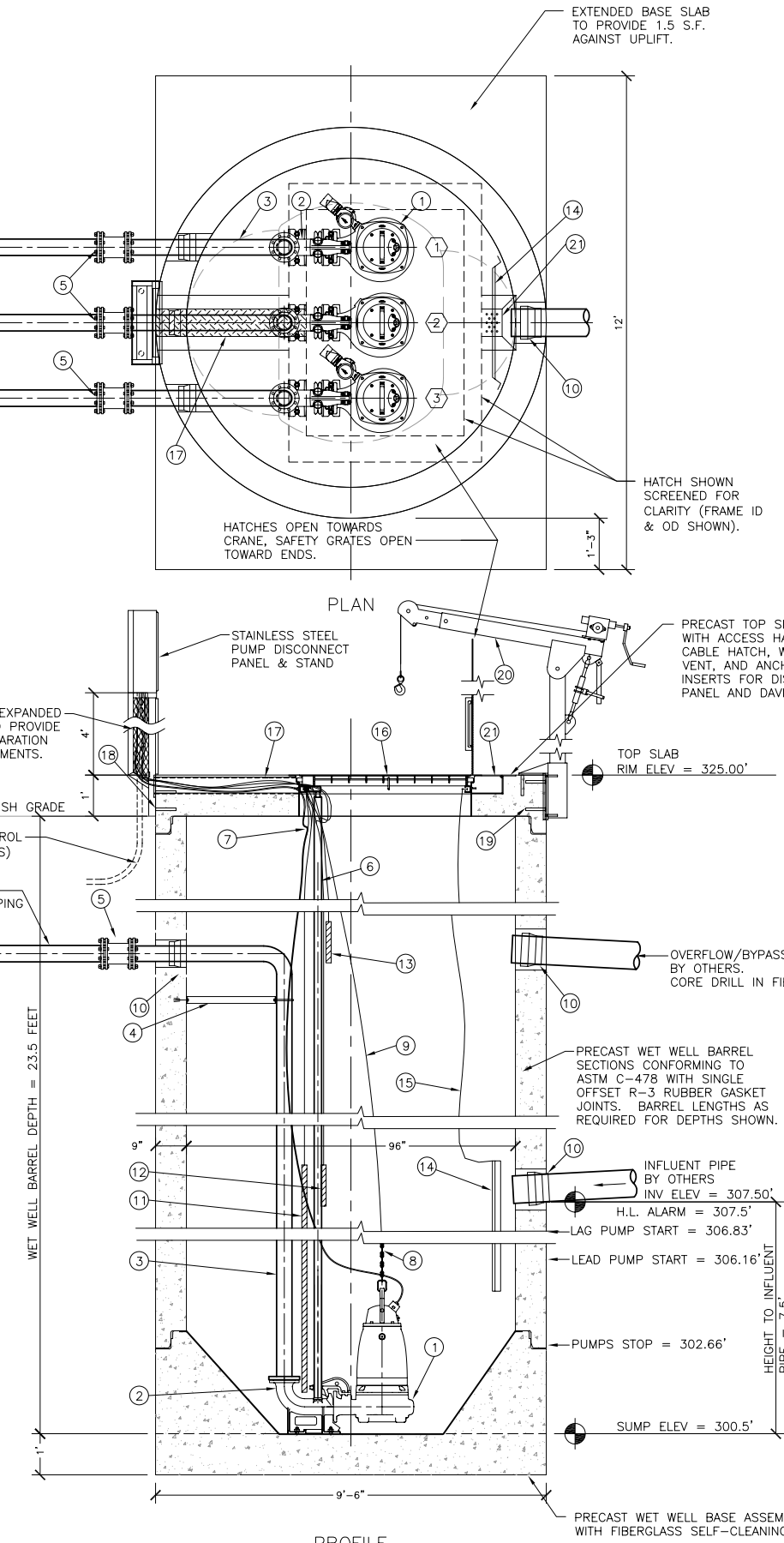
VAULT DESIGN NOTES:
 1. HATCH DESIGN LOADS: 700 LB/SQUARE FOOT.
 2. VALVES AND VAULT PIPING SYSTEM SHALL BE TESTED TO 150 PSI AFTER ASSEMBLY.

- 51 VAULT EXTENSION RISER(S), HEIGHT AS REQUIRED FOR PIPE COVER DEPTH SHOWN.
- 52 FLYGT ALUMINUM ACCESS HATCH PRECAST INTO VAULT TOP SLAB. (___" x ___" CLEAR OPENING). PROVIDE WITH SAFE-HATCH SAFETY GRATE BY FLYGT OR EQUIVALENT. CENTER HATCH OVER VALVE OPERATING NUTS.
- 53 4" CL 52 D.I. PIPE SPOOL (PExPE).
- 54 4" D.I. SLEEVE COUPLING (RESTRAINED MjxMj).
- 55 4" CL 53 D.I. PIPE SPOOL (FLxPE).
- 56 4" FLANGED D.I. BODY SWING CHECK VALVE, VAL-MATIC SWING-FLEX MODEL 504A OR EQUAL, W/ OPTIONAL EXTERNAL MECHANICAL POSITION INDICATOR. PROVIDE ONE VALVE WITH BACKFLOW ACTUATOR.
- 57 4" ECCENTRIC PLUG VALVE, VAL-MATIC MODEL 5804R/BA02 OR EQUAL. PROVIDE WORM GEAR ACTUATOR W/ 2-INCH OPERATING NUT ORIENTED AS SHOWN. INSTALL WITH SHAFT HORIZONTAL AND PLUG UP WHEN OPEN.
- 58 4" D.I. 45° BEND (FLxFL).
- 59 6" BLIND FLANGE.
- 60 6"x4" D.I. WYE (FLxFL).
- 61 WAFER STYLE DIAPHRAM PRESSURE SENSOR, RED VALVE SERIES 40 OR EQUAL.
- 62 6" CL 52 D.I. PIPE SPOOL (PExPE).
- 63 ADJUSTABLE PIPE SUPPORT, STANDON OR EQUIVALENT (TYP OF 3).
- 64 VAULT SEAL, KOR-N-SEAL OR EQUIVALENT (TYP OF 4).
- 65 RETAINER GLAND CENTERED IN THRUST COLLAR, MEGALUG OR EQUIVALENT (TYP OF 4).
- 66 6" D.I. SLEEVE COUPLING, D.I. VAULT PIPE TO FORCE MAIN PIPING. (RESTRAINED MjxMj).
- 67 FORCE MAIN (BY OTHERS).
- 68 PRECAST VAULT SUMP FOR SUMP PUMP OR GRAVITY DRAIN TO APPROVED POINT.
- 69 SUMP PUMP OR GRAVITY DRAIN (BY OTHERS). COORDINATE WITH BUILDING CONTRACTOR TO CONNECT SUMP PUMP TO PUMP STATION POWER PER NEC REQUIREMENTS. PROVIDE SUMP PUMP (IF PROVIDED) WITH THE FOLLOWING (BY OTHERS).
 (A) 2" PVC UNION.
 (B) 2" BALL CHECK VALVE.
 (C) 2" BALL VALVE.
 (D) 2" SCH 40 PVC SUMP PUMP DISCHARGE TO WETWELL. TERMINATE DISCHARGE IN WETWELL W/ 90° BEND TURN-DOWN AND PIPE SPOOL. MIN COVER PER LOCAL REQUIREMENTS.
- 70 6" MEGAFLANGE ADAPTER
- 71 ADJUSTABLE PIPE SUPPORT INSTALLED HORZ. FOR THRUST RESTRAINT, STANDON OR EQUIVALENT (TYP OF 2).
- 72 SOLID SPACER, EPOXY COATED STEEL.



4" TRIPLEX VALVE VAULT
 SCALE: 1/2" = 1'-0"

NOTE: VAULT TOP SLABS ARE NOT TRAFFIC RATED.
 SET NON-TRAFFIC RATED TOP SLABS A MINIMUM OF 12-INCHES ABOVE ADJACENT GRADE, OR INSTALL PIPE BOLLARDS AS REQUIRED FOR PROTECTION (TYPICAL FOR BOTH WETWELL & VALVE VAULT, BY OTHERS)



8' DIAMETER WET WELL
 SCALE: 1/4" = 1'-0"

- 1 SUBMERSIBLE NON-CLOG SEWAGE PUMPS, FLYGT MODEL NP-3153 (452). PROVIDE ONE PUMP WITH MIX FLUSH VALVE.
- 2 4-INCH FLYGT DISCHARGE ELBOW.
- 3 STAINLESS STEEL DISCHARGE PIPING (SCHD 40) FACTORY TESTED. PROVIDE ALL PIPE PENETRATION(S) WITH RUBBER BOOTS (KOR-N-SEAL).
- 4 STAINLESS STEEL DISCHARGE PIPE ANCHOR BRACKET.
- 5 DI SLEEVE COUPLING, STAINLESS STEEL TO DI PIPING
- 6 TWO 2-INCH SCHEDULE 40 STAINLESS STEEL GUIDE BARS FOR EACH PUMP (FULL HEIGHT). ATTACH TO HATCH UNI-STRUT WITH FLYGT UPPER GUIDE BAR BRACKET.
- 7 PUMP POWER CABLE WITH QUICK CONNECT COUPLING AT PUMP DISCONNECT PANEL. PROVIDE EACH CABLE WITH A STAINLESS STEEL BASKET CABLE GRIP ATTACHED TO HOOK ON UPPER GUIDE BAR BRACKET.
- 8 STAINLESS STEEL CHAIN SLING FOR PUMP RETRIEVAL USING FLYGT GRIP-EYE. ATTACH TO PUMP LIFTING HANDLE.
- 9 1/4" STAINLESS STEEL CHAIN (S-4 ATTACHED TO PUMP HANDLE. PROVIDE CHAIN WITH 3/8" & 1/2" STAINLESS STEEL BOW SHACKLE WITH SCREW PIN ATTACHED TO PUMP HANDLE. ATTACH UPPER END OF CHAIN TO HOOK ON UPPER GUIDE BAR BRACKET.
- 10 WETWELL SEAL, KOR-N-SEAL.
- 11 PUMP LIQUID LEVEL CONTROL PROBE, FLYGT MULTI-TRODE PROBE.
 PROBE LENGTH = 5 FEET (1.5 METERS)
 NUMBER OF SENSORS = 10
 SENSOR SPACING = 6-INCHES.
 PROVIDE MULTITRODE MTK-1 PROBE MOUNTING BRACKET MOUNTED TO HATCH UNI-STRUT.
- 12 REDUNDANT CONTROL SYSTEM. CUSTOM MULTI-TRODE 3 SENSOR PROBE FOR REDUNDANT HIGH LEVEL ALARM AND PUMP START COMMAND.
- 13 OPTIONAL. OVERFLOW/BYPASS ALARM PROBE, MULTI-TRODE SINGLE SENSOR PROBE. PROVIDE WITH SEPARATE MTK-1 MOUNTING BRACKET.
- 14 HDPE INFLUENT DEFLECTOR WITH FULL SIZE INSPECTION HOLE AND GUILLOTINE COVER.
- 15 1/8" STAINLESS STEEL LIFTING CABLE FOR INFLUENT DEFLECTOR INSPECTION HOLE COVER. PERMANENTLY ATTACH UPPER END OF CABLE TO HATCH UNI-STRUT.
- 16 FLYGT ALUMINUM ACCESS HATCH PRECAST INTO WETWELL TOP SLAB. PROVIDE WITH SAFE-HATCH SAFETY GRATE BY FLYGT.
- 17 ALUMINUM CABLE HATCH AND WETWELL VENT PRECAST INTO WETWELL TOP SLAB. PROVIDE WITH STAINLESS STEEL HINGES AND SLAM-LOCK.
- 18 STAINLESS STEEL ANCHOR INSERTS FOR PUMP DISCONNECT PANEL.
- 19 STAINLESS STEEL ANCHOR INSERTS FOR PUMP DAVIT CRANE BASE.
- 20 PUMP DAVIT CRANE, TERN MODEL 5124 OR EQUIVALENT.

VERIFY SCALE BAR IS ONE INCH ON ORIGINAL DRAWING 0 1"	IF NOT ONE INCH ON SCALES ACCORDINGLY	DSN. - DRN. TMT CKD. AD	DATE 11/05	DESCRIPTION REVISIONS	NO. 1	BY
ROMTEC UTILITIES 18240 NORTH BANK ROAD ROSEBURG, OR 97470 (541) 496-3541 FAX (541) 496-0803						
UDELL ENGINEERING & SURVEYING 3RD & MAPLE 8' WETWELL 4" DISCHARGE & VAULT FLYGT NP 3153 PUMPS						
SHEET 1 OF _____ JOB NUMBER RMTC 0113						

May 24, 2005 - 10:05am
 R:\QUOTES - LIFT STATION\Oregon\3RD & MAPLE\3RD & MAPLE - COMPONENT DRAWING.dwg