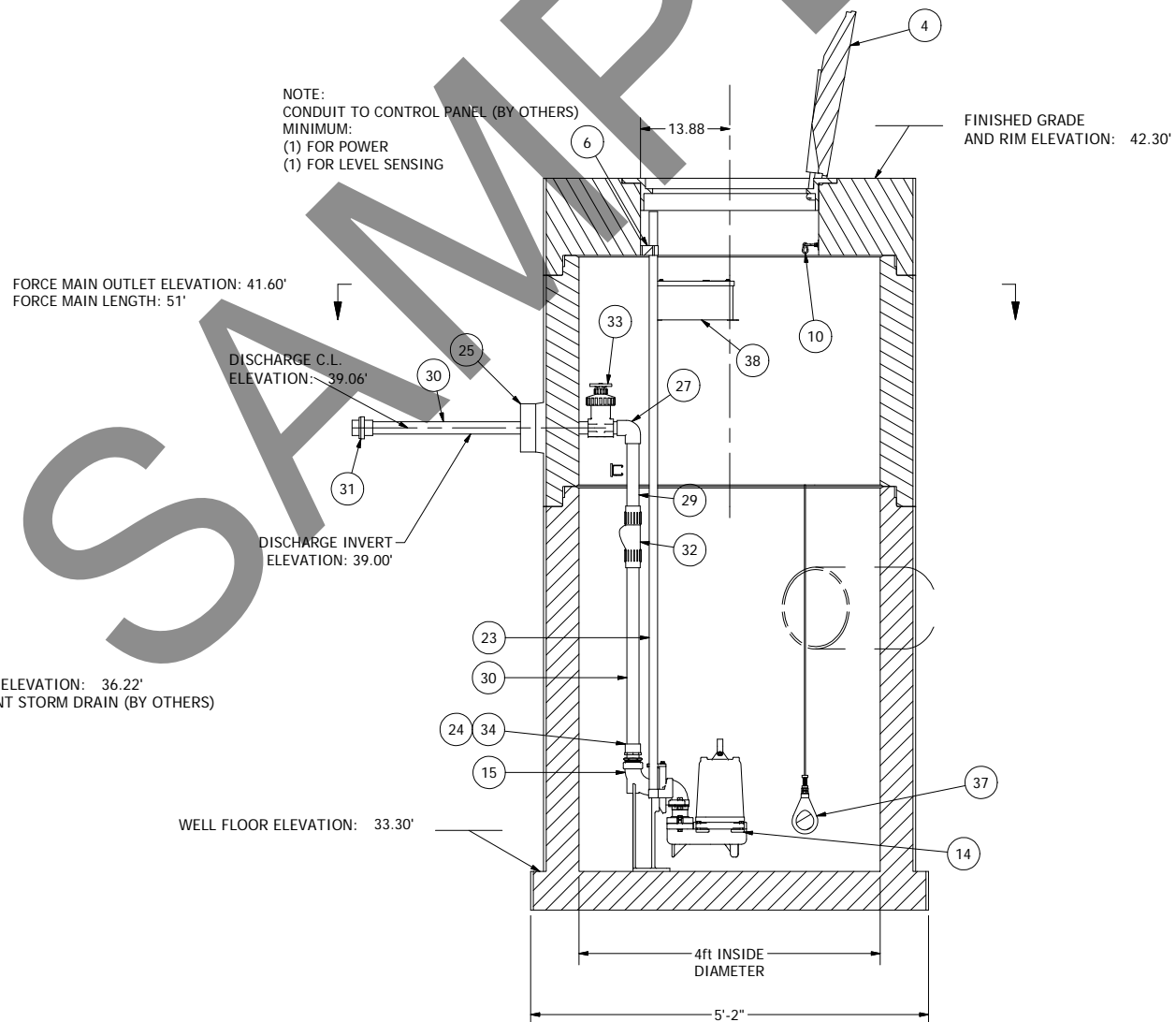
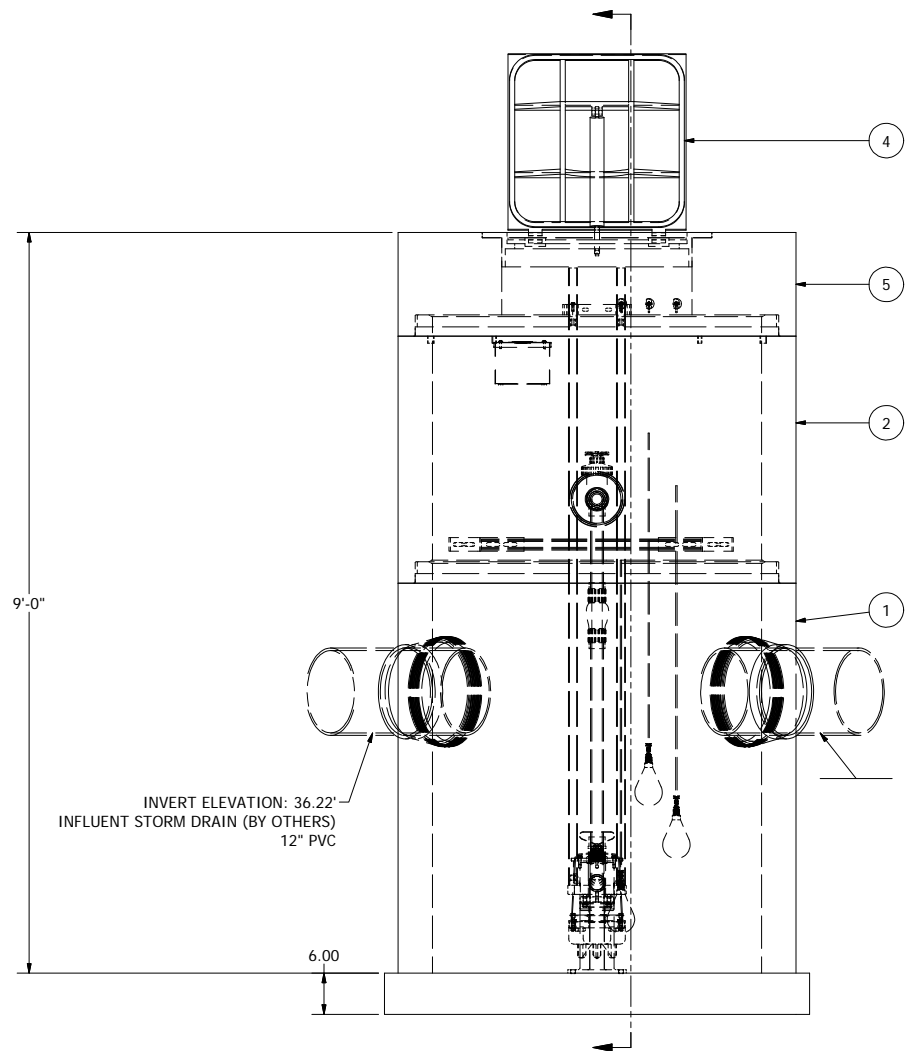


NOTE: WET WELL TOP SLAB IS H2O FULL TRAFFIC RATED



4' DIAMETER WET WELL
1.5" DISCHARGE PIPING
GOULDS PUMP

ALL MATERIALS SHOWN ON THIS SHEET WILL BE SUPPLIED BY ROMTEC UTILITIES AND DELIVERED TO THE SITE AFTER THE HOLE HAS BEEN EXCAVATED AND SHORED. THE CONTRACTOR SHALL SUPPLY A CRANE OF SUFFICIENT SIZE TO LOWER ALL THE CONCRETE PIECES INTO THE HOLE SAFELY. THE CONTRACTOR SHALL INSTALL THE WET WELL (AND VALVE VAULT AND METERING VAULT IF APPLICABLE). ROMTEC UTILITIES WILL PROVIDE A REPRESENTATIVE FOR TECHNICAL ASSISTANCE ON THE DAY OF INSTALLATION TO ANSWER ANY QUESTIONS THAT MAY ARISE. THE CONTRACTOR IS RESPONSIBLE FOR ALL PLUMBING AND ELECTRICAL CONNECTIONS AND INSTALLATION. ITEMS NOTED AS "BY OTHERS" WILL BE PROVIDED AND INSTALLED BY THE CONTRACTOR. ROMTEC UTILITIES WILL NOT INSTALL ANY OF THE COMPONENTS SHOWN ON THIS PAGE.

NOTE: ALL DIMENSIONS AND ELEVATIONS SHOWN ARE NOMINAL DIMENSIONS. IT IS THE RESPONSIBILITY OF THE ON-SITE CONTRACTOR OR ROMTEC UTILITIES CUSTOMER (NOT ROMTEC UTILITIES) TO VERIFY THE ACCURACY OF ANY CRITICAL DIMENSIONS OR ELEVATIONS PRIOR TO SETTING OR INSTALLING ANY EQUIPMENT.

© 2015 ROMTEC INC. ALL RIGHTS RESERVED. THESE PLANS AND DRAWINGS MAY NOT BE REPRODUCED, ADAPTED, OR FURTHER DISTRIBUTED, AND NO COMPONENTS MAY BE CONSTRUCTED FROM THESE PLANS, WITHOUT WRITTEN PERMISSION OF ROMTEC, INC.

VERIFY SCALE
BAR IS ONE INCH ON
ORIGINAL DRAWING

0 ————— 1"

IF NOT ONE INCH ON
THIS SHEET, ADJUST
SCALE'S ACCORDINGLY

COMPONENT DRAWING

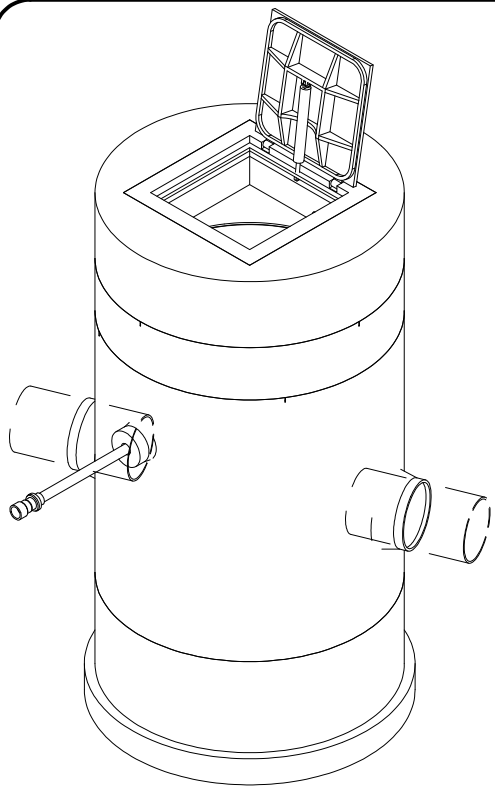
ROMTEC
UTILITIES
18240 NORTH BANK ROAD
ROSEBURG, OREGON 97470
(541) 496-9678
FAX (541) 496-0804

BAY 101 - PUMP#1
4ft WET WELL - 1.5in PIPING

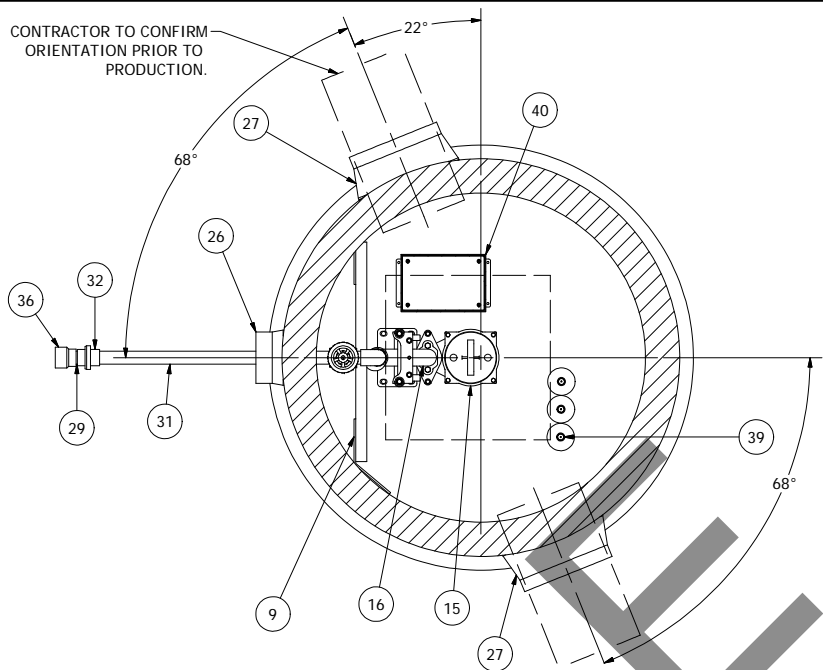
SHEET
1 OF 1

JOB NUMBER
RMTC
0000

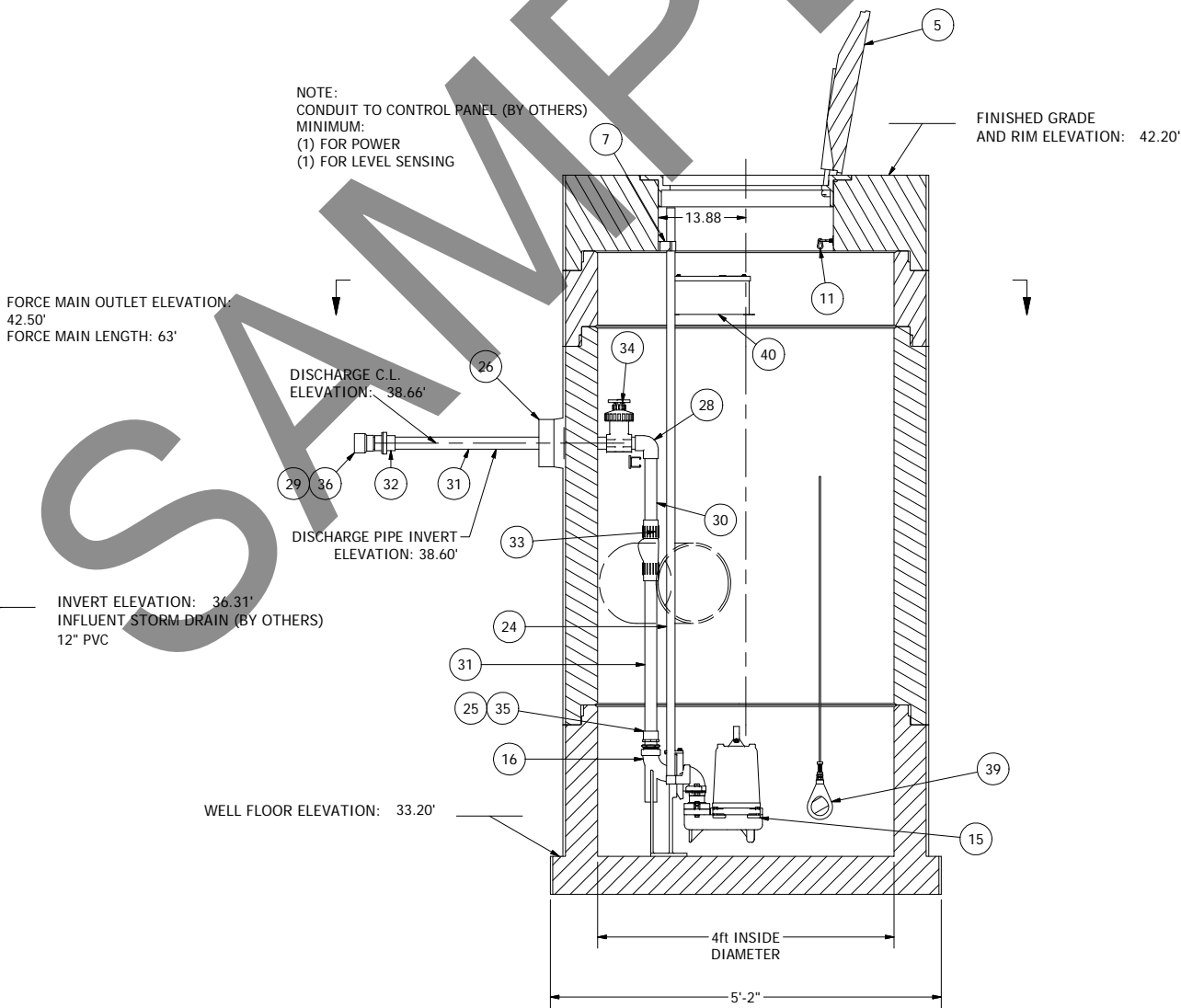
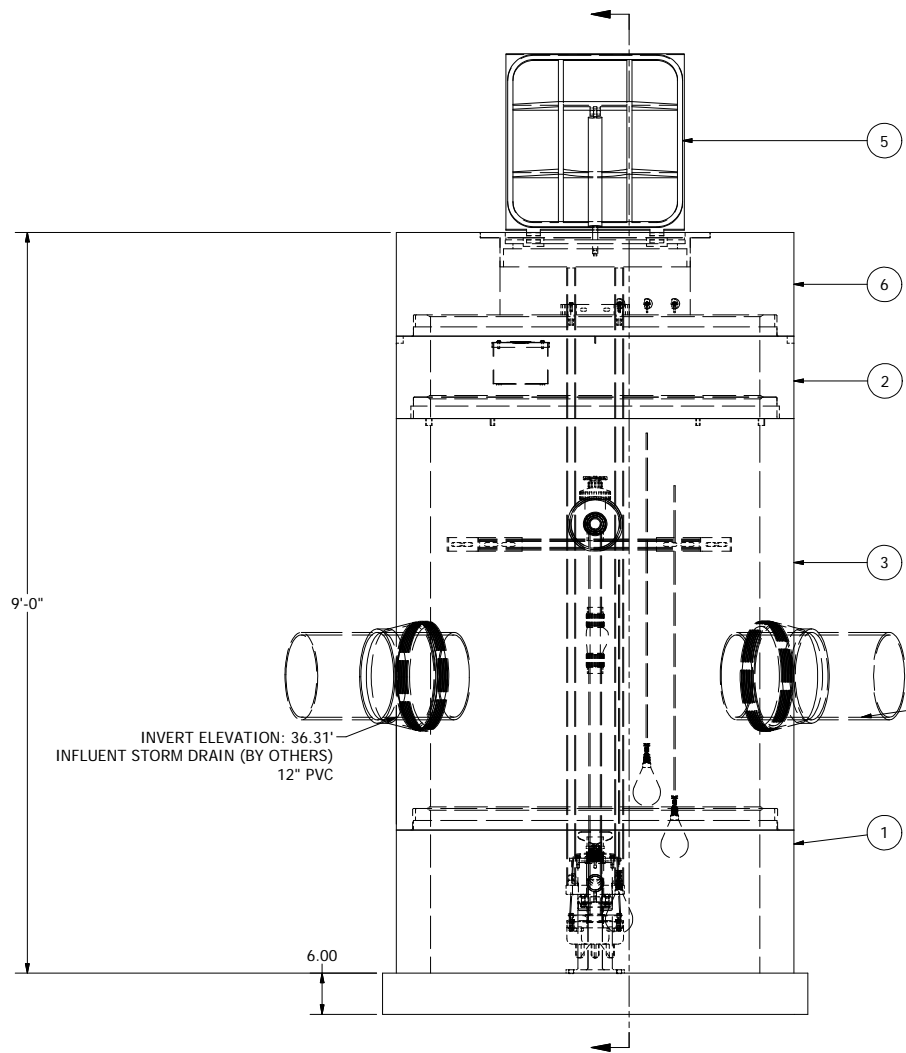
2	REVISED PER 3-7-16 COMMENTS	3-10-16	AD
1	REVISED PER COMMENTS	2-2-16	AD
REV	DESCRIPTION	DATE	APPROV
REVISION HISTORY			



SENSOR AND ELEVATION TABLE		
LEVEL ELEVATION	DISTANCE BETWEEN POINTS	SET POINT DESCRIPTION
36.31		INVERT IN
N/A		BACK UP PUMPS START
	N/A	SENSOR SPACING
N/A		BACK UP PUMPS STOP
	N/A	SENSOR SPACING
N/A		BACK UP HL ALARM
35.70		HIGH LEVEL ALARM
	0.50	SENSOR SPACING
N/A		LAG PUMP START
	N/A	SENSOR SPACING
35.20		LEAD PUMP START
	0.50	SENSOR SPACING
34.70		PUMP STOP
	1.50	DISTANCE TO FLOOR
33.20		FLOOR ELEVATION



NOTE: WET WELL TOP SLAB IS H20 FULL TRAFFIC RATED



4' DIAMETER WET WELL
1.5" DISCHARGE PIPING
GOULDS PUMP

ALL MATERIALS SHOWN ON THIS SHEET WILL BE SUPPLIED BY ROMTEC UTILITIES AND DELIVERED TO THE SITE AFTER THE HOLE HAS BEEN EXCAVATED AND SHORED. THE CONTRACTOR SHALL SUPPLY A CRANE OF SUFFICIENT SIZE TO LOWER ALL THE CONCRETE PIECES INTO THE HOLE SAFELY. THE THE CONTRACTOR SHALL INSTALL THE WET WELL (AND VALVE VAULT AND METERING VAULT IF APPLICABLE). ROMTEC UTILITIES WILL PROVIDE A REPRESENTATIVE FOR TECHNICAL ASSISTANCE ON THE DAY OF INSTALLATION TO ANSWER ANY QUESTIONS THAT MAY ARISE. THE CONTRACTOR IS RESPONSIBLE FOR ALL PLUMBING AND ELECTRICAL CONNECTIONS AND INSTALLATION. ITEMS NOTED AS "BY OTHERS" WILL BE PROVIDED AND INSTALLED BY THE CONTRACTOR. ROMTEC UTILITIES WILL NOT INSTALL ANY OF THE COMPONENTS SHOWN ON THIS PAGE.

NOTE: ALL DIMENSIONS AND ELEVATIONS SHOWN ARE NOMINAL DIMENSIONS. IT IS THE RESPONSIBILITY OF THE ON-SITE CONTRACTOR OR ROMTEC UTILITIES CUSTOMER (NOT ROMTEC UTILITIES) TO VERIFY THE ACCURACY OF ANY CRITICAL DIMENSIONS OR ELEVATIONS PRIOR TO SETTING OR INSTALLING ANY EQUIPMENT.

VERIFY SCALE
BAR IS ONE INCH ON
ORIGINAL DRAWING
0 1"
IF NOT ONE INCH ON
THIS SHEET ADJUST
SCALE ACCORDINGLY

COMPONENT
DRAWING

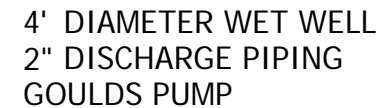
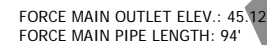
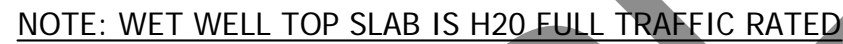
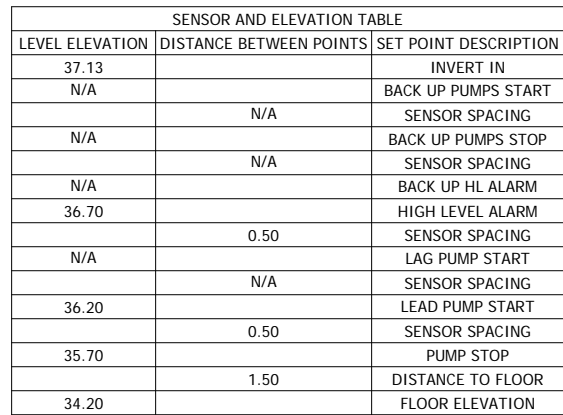
**ROMTEC
UTILITIES**
18240 NORTH BANK ROAD
ROSEBURG, OREGON 97470
(541) 496-9678
FAX (541) 496-0804

BAY 101 - PUMP#2
4ft WET WELL - 1.5in PIPING

SHEET
1 OF 1

JOB NUMBER
RMTC
0000

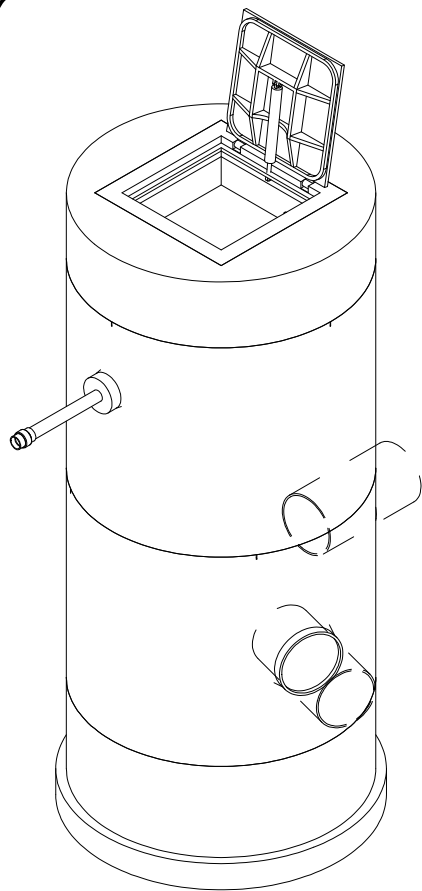
REVISION HISTORY		DATE	APPROV
2	REVISED PER 3-7-16 COMMENTS	3-10-16	AD
1	REVISED PER COMMENTS	2-2-16	AD
REV	DESCRIPTION	DATE	APPROV



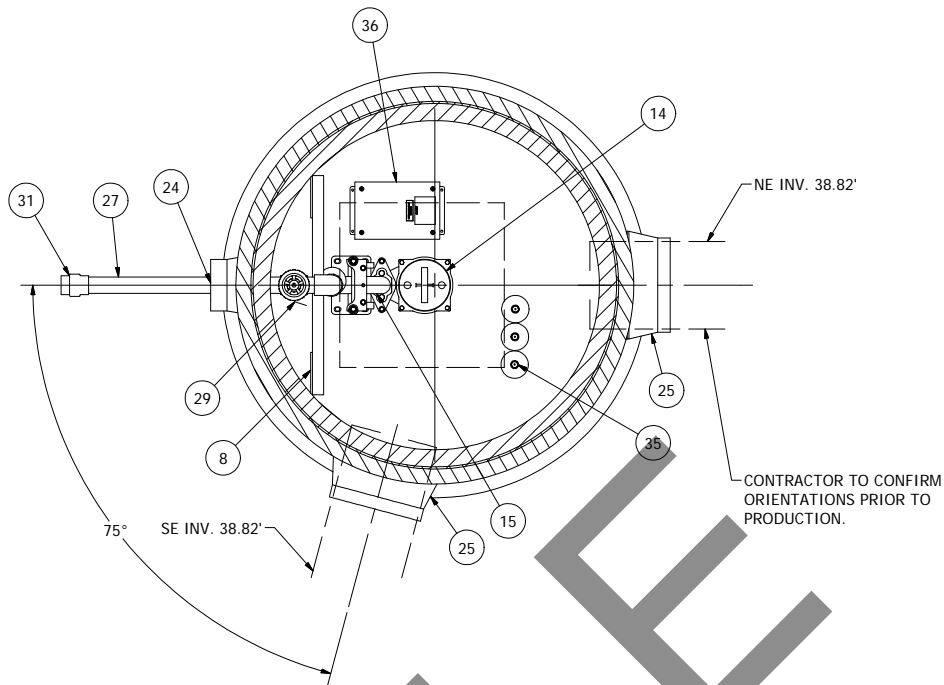
ALL MATERIALS SHOWN ON THIS SHEET WILL BE SUPPLIED BY ROMTEC UTILITIES AND DELIVERED TO THE SITE AFTER THE HOLE HAS BEEN EXCAVATED AND SHORED. THE CONTRACTOR SHALL SUPPLY A CRANE OF SUFFICIENT SIZE TO LOWER ALL THE CONCRETE PIECES INTO THE HOLE SAFELY. THE THE CONTRACTOR SHALL INSTALL THE WET WELL (AND VALVE VAULT AND METERING VAULT IF APPLICABLE). ROMTEC UTILITIES WILL PROVIDE A REPRESENTATIVE FOR TECHNICAL ASSISTANCE ON THE DAY OF INSTALLATION TO ANSWER ANY QUESTIONS THAT MAY ARISE. THE CONTRACTOR IS RESPONSIBLE FOR ALL PLUMBING AND ELECTRICAL CONNECTIONS AND INSTALLATION. ITEMS NOTED AS "BY OTHERS" WILL BE PROVIDED AND INSTALLED BY THE CONTRACTOR. ROMTEC UTILITIES WILL NOT INSTALL ANY OF THE COMPONENTS SHOWN ON THIS PAGE.

NOTE: ALL DIMENSIONS AND ELEVATIONS SHOWN ARE NOMINAL DIMENSIONS. IT IS THE RESPONSIBILITY OF THE ON-SITE CONTRACTOR OR ROMTEC UTILITIES CUSTOMER (NOT ROMTEC UTILITIES) TO VERIFY THE ACCURACY OF ANY CRITICAL DIMENSIONS OR ELEVATIONS PRIOR TO SETTING OR INSTALLING ANY EQUIPMENT.

© 2015 ROMTEC INC. ALL RIGHTS RESERVED. THESE
PLANS AND DRAWINGS MAY NOT BE REPRODUCED,
ADAPTED, OR FURTHER DISTRIBUTED, AND NO
COMPONENTS MAY BE CONSTRUCTED FROM THESE
PLANS. WITHOUT WRITTEN PERMISSION OF ROMTEC, INC.



SENSOR AND ELEVATION TABLE		
LEVEL ELEVATION	DISTANCE BETWEEN POINTS	SET POINT DESCRIPTION
38.82		INVERT IN
N/A		BACK UP PUMPS START
	N/A	SENSOR SPACING
N/A		BACK UP PUMPS STOP
	N/A	SENSOR SPACING
N/A		BACK UP HL ALARM
38.35		HIGH LEVEL ALARM
	0.50	SENSOR SPACING
N/A		LAG PUMP START
	N/A	SENSOR SPACING
37.85		LEAD PUMP START
	0.75	SENSOR SPACING
37.10		PUMP STOP
	1.50	DISTANCE TO FLOOR
35.60		FLOOR ELEVATION



NOTE: WET WELL TOP SLAB IS H2O FULL TRAFFIC RATED

NOTE:
CONDUIT TO CONTROL PANEL (BY OTHERS)
MINIMUM:
(1) FOR POWER
(1) FOR LEVEL SENSING

FORCE MAIN OUTLET ELEV.: 46.37'
FORCE MAIN LENGTH: 5'

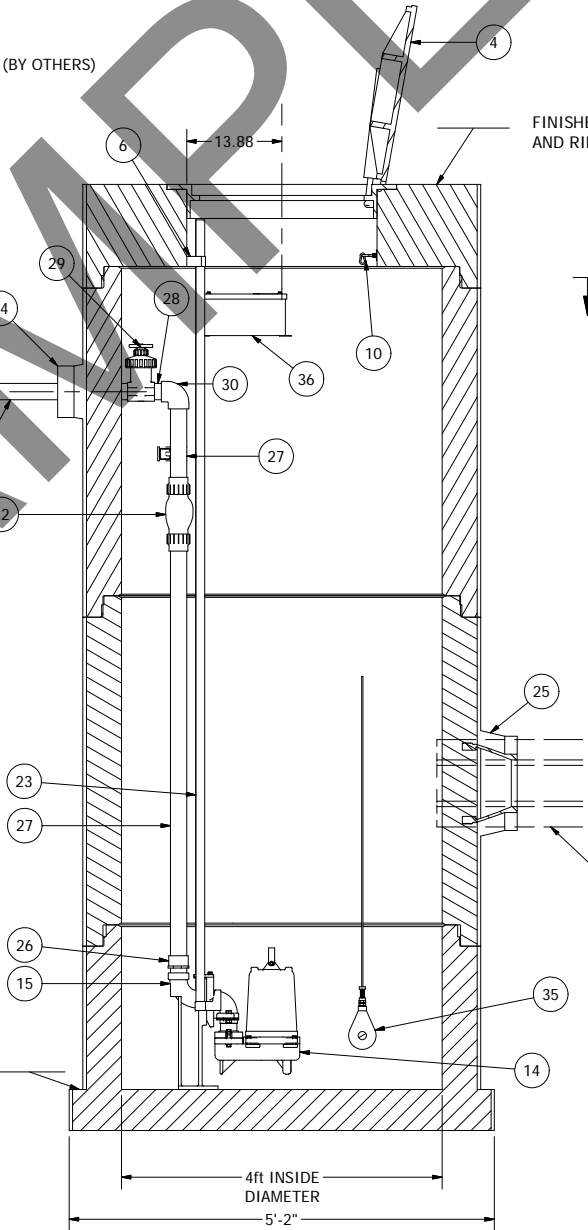
DISCHARGE C.L.
ELEVATION: 44.08'
DISCHARGE INVERT
ELEVATION: 44.00'

SE INVERT ELEVATION: 38.82'
OVERFLOW STORM DRAIN (BY OTHERS)
12" PVC

FINISHED GRADE
AND RIM ELEVATION: 46.60'

NE INVERT ELEVATION: 38.82'
INFLUENT STORM DRAIN (BY OTHERS)
12" PVC

WELL FLOOR ELEVATION: 35.60'



4' DIAMETER WET WELL
2" DISCHARGE PIPING
GOULDS PUMP

ALL MATERIALS SHOWN ON THIS SHEET WILL BE SUPPLIED BY ROMTEC UTILITIES AND DELIVERED TO THE SITE AFTER THE HOLE HAS BEEN EXCAVATED AND SHORED. THE CONTRACTOR SHALL SUPPLY A CRANE OF SUFFICIENT SIZE TO LOWER ALL THE CONCRETE PIECES INTO THE HOLE SAFELY. THE CONTRACTOR SHALL INSTALL THE WET WELL (AND VALVE VAULT AND METERING VAULT IF APPLICABLE). ROMTEC UTILITIES WILL PROVIDE A REPRESENTATIVE FOR TECHNICAL ASSISTANCE ON THE DAY OF INSTALLATION TO ANSWER ANY QUESTIONS THAT MAY ARISE. THE CONTRACTOR IS RESPONSIBLE FOR ALL PLUMBING AND ELECTRICAL CONNECTIONS AND INSTALLATION. ITEMS NOTED AS "BY OTHERS" WILL BE PROVIDED AND INSTALLED BY THE CONTRACTOR. ROMTEC UTILITIES WILL NOT INSTALL ANY OF THE COMPONENTS SHOWN ON THIS PAGE.

NOTE: ALL DIMENSIONS AND ELEVATIONS SHOWN ARE NOMINAL DIMENSIONS. IT IS THE RESPONSIBILITY OF THE ON-SITE CONTRACTOR OR ROMTEC UTILITIES CUSTOMER (NOT ROMTEC UTILITIES) TO VERIFY THE ACCURACY OF ANY CRITICAL DIMENSIONS OR ELEVATIONS PRIOR TO SETTING OR INSTALLING ANY EQUIPMENT.

VERIFY SCALE
BAR IS ONE INCH ON
ORIGINAL DRAWING
0 1"
IF NOT ONE INCH ON
THIS SHEET ADJUST
SCALES ACCORDINGLY

DSN - AD
DRN - AD
CKD - AD
DATE - 12-23-15

REV
1
REVIS
REVISED PER 3-7-16 COMMENTS
DATE
3-10-16
AD
APPROV

REVISION HISTORY

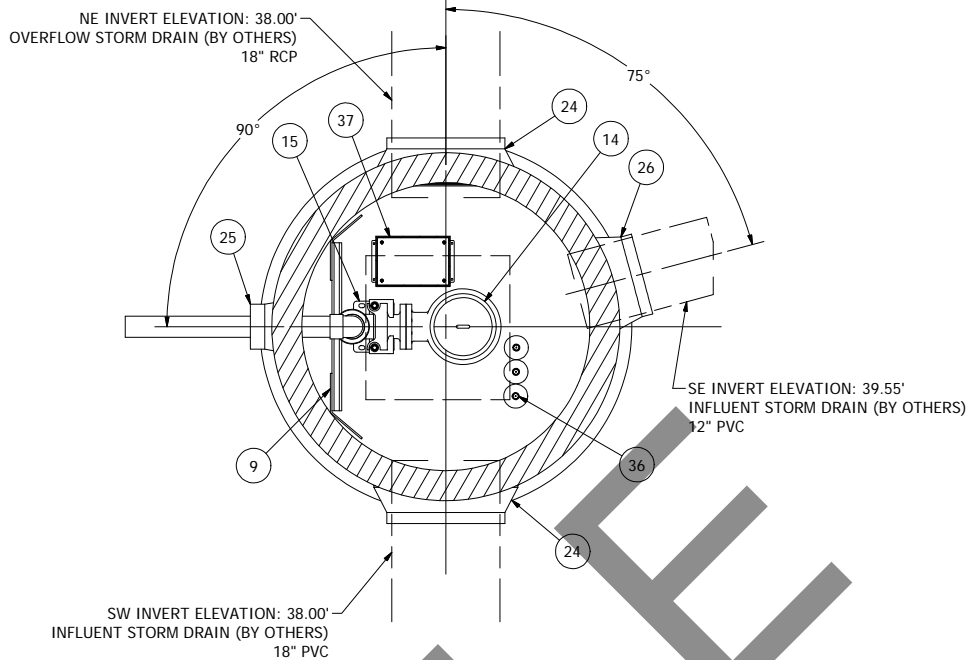
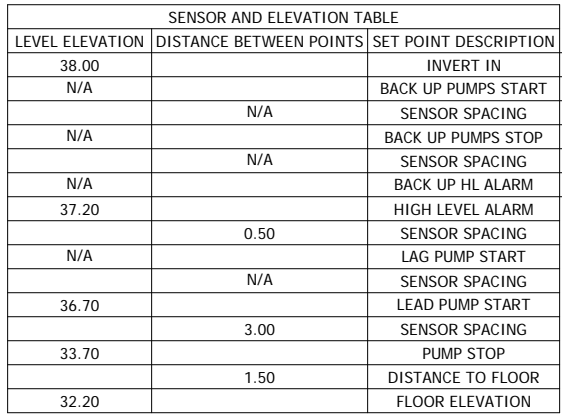
ROMTEC
UTILITIES

18240 NORTH BANK ROAD
ROSEBURG, OREGON 97470
(541) 496-9678
FAX (541) 496-0804

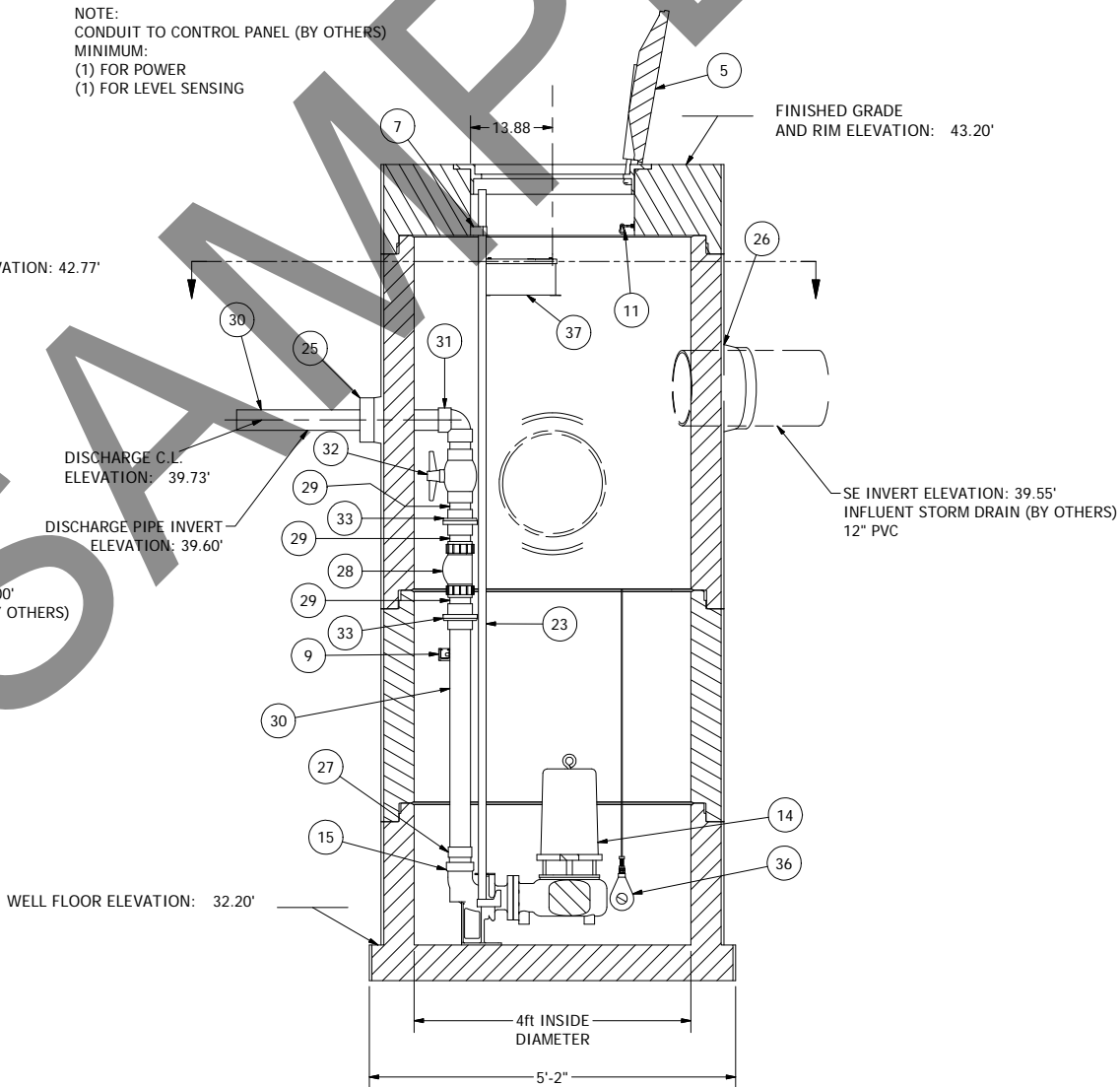
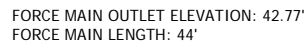
BAY 101 - PUMP#4
4ft WET WELL - 2in PIPING

SHEET
1 OF 1

JOB NUMBER
RMTC
0000



NOTE:
CONDUIT TO CONTROL PANEL (BY OTHERS)
MINIMUM:
(1) FOR POWER
(1) FOR LEVEL SENSING



4' DIAMETER WET WELL
3" DISCHARGE PIPING
GOULDS PUMP

ALL MATERIALS SHOWN ON THIS SHEET WILL BE SUPPLIED BY ROMTEC UTILITIES AND DELIVERED TO THE SITE AFTER THE HOLE HAS BEEN EXCAVATED AND SHORED. THE CONTRACTOR SHALL SUPPLY A CRANE OF SUFFICIENT SIZE TO LOWER ALL THE CONCRETE PIECES INTO THE HOLE SAFELY. THE CONTRACTOR SHALL INSTALL THE WET WELL (AND VALVE VAULT AND METERING VAULT IF APPLICABLE). ROMTEC UTILITIES WILL PROVIDE A REPRESENTATIVE FOR TECHNICAL ASSISTANCE ON THE DAY OF INSTALLATION TO ANSWER ANY QUESTIONS THAT MAY ARISE. THE CONTRACTOR IS RESPONSIBLE FOR ALL PLUMBING AND ELECTRICAL CONNECTIONS AND INSTALLATION. ITEMS NOTED AS "BY OTHERS" WILL BE PROVIDED AND INSTALLED BY THE CONTRACTOR. ROMTEC UTILITIES WILL NOT INSTALL ANY OF THE COMPONENTS SHOWN ON THIS PAGE.

NOTE: ALL DIMENSIONS AND ELEVATIONS SHOWN ARE NOMINAL DIMENSIONS. IT IS THE RESPONSIBILITY OF THE ON-SITE CONTRACTOR OR ROMTEC UTILITIES CUSTOMER (NOT ROMTEC UTILITIES) TO VERIFY THE ACCURACY OF ANY CRITICAL DIMENSIONS OR ELEVATIONS PRIOR TO SETTING OR INSTALLING ANY EQUIPMENT.

© 2015 ROMTEC INC. ALL RIGHTS RESERVED. THESE PLANS AND DRAWINGS MAY NOT BE REPRODUCED, ADAPTED, OR FURTHER DISTRIBUTED, AND NO COMPONENTS MAY BE CONSTRUCTED FROM THESE PLANS, WITHOUT WRITTEN PERMISSION OF ROMTEC, INC.

VERIFY SCALE
BAR IS ONE INCH ON
ORIGINAL DRAWING

0 1"

IF NOT ONE INCH ON
THIS SHEET, ADJUST
SCALE ACCORDINGLY

COMPONENT DRAWING

ROMTEC
UTILITIES
18240 NORTH BANK ROAD
ROSEBURG, OREGON 97470
(541) 496-9678
FAX (541) 496-0804

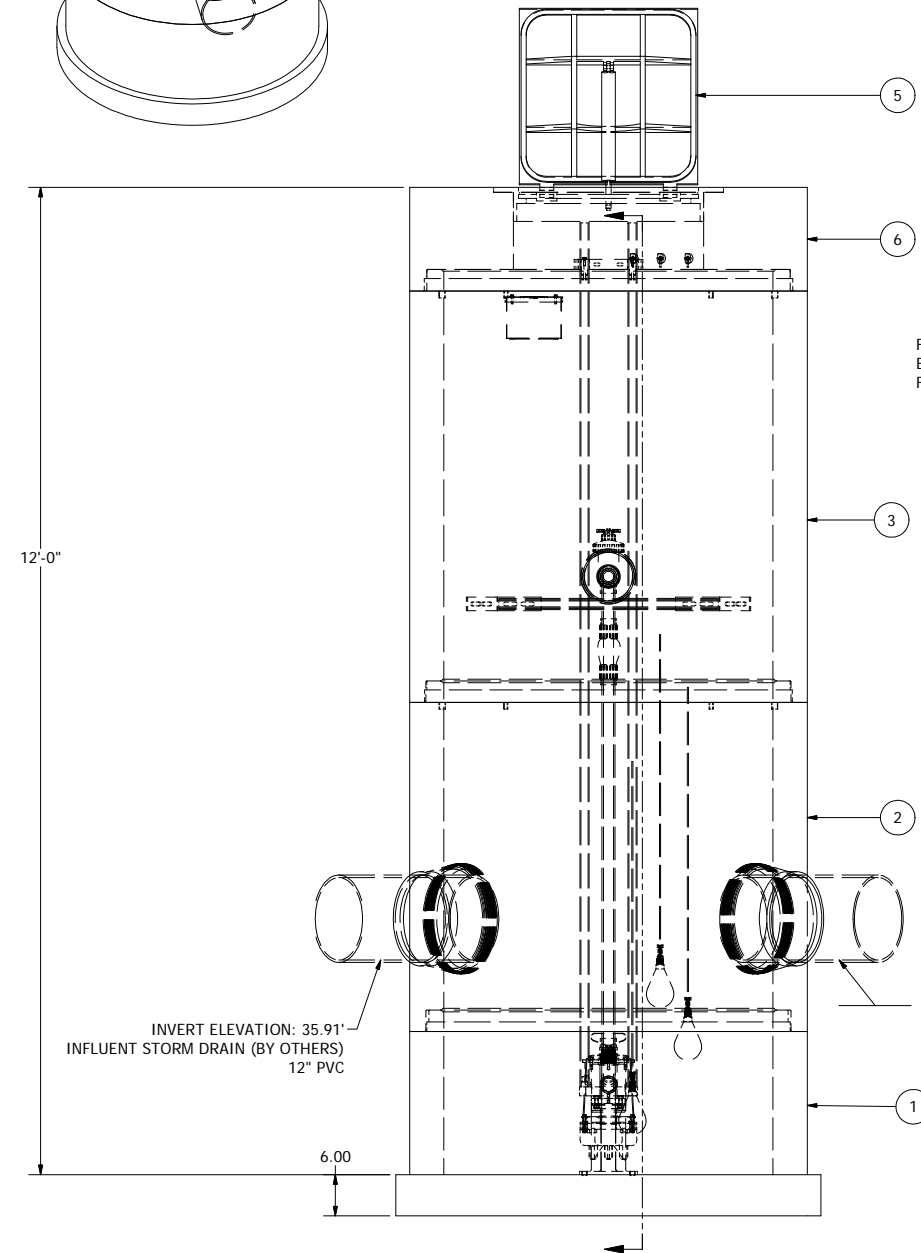
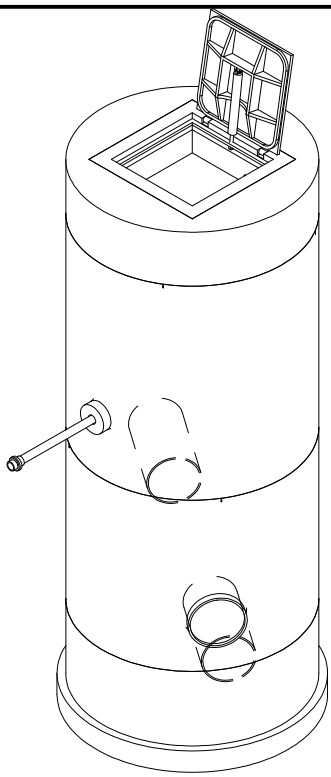
BAY 101 - PUMP#5
4ft WET WELL - 3in PIPING

SHEET
1 OF 1

JOB NUMBER
RMTC
0000

1	REVISED PER 3-7-16 COMMENTS	3-11-16	AD
REV	DESCRIPTION	DATE	APPROV
REVISION HISTORY			

SENSOR AND ELEVATION TABLE		
LEVEL ELEVATION	DISTANCE BETWEEN POINTS	SET POINT DESCRIPTION
35.91		INVERT IN
N/A		BACK UP PUMPS START
	N/A	SENSOR SPACING
N/A		BACK UP PUMPS STOP
	N/A	SENSOR SPACING
N/A		BACK UP HL ALARM
35.30		HIGH LEVEL ALARM
	0.50	SENSOR SPACING
N/A		LAG PUMP START
	N/A	SENSOR SPACING
34.80		LEAD PUMP START
	0.50	SENSOR SPACING
34.30		PUMP STOP
	1.50	DISTANCE TO FLOOR
33.30		FLOOR ELEVATION



© 2015 ROMTEC INC. ALL RIGHTS RESERVED. THESE PLANS AND DRAWINGS MAY NOT BE REPRODUCED, ADAPTED, OR FURTHER DISTRIBUTED, AND NO COMPONENTS MAY BE CONSTRUCTED FROM THESE PLANS, WITHOUT WRITTEN PERMISSION OF ROMTEC, INC.

NOTE: WET WELL TOP SLAB IS H20 FULL TRAFFIC RATED

NOTE:
CONDUIT TO CONTROL PANEL (BY OTHERS)
MINIMUM:
(1) FOR POWER
(1) FOR LEVEL SENSING

FORCE MAIN OUTLET INVERT
ELEVATION: 40.51'
FORCE MAIN LENGTH: 13'

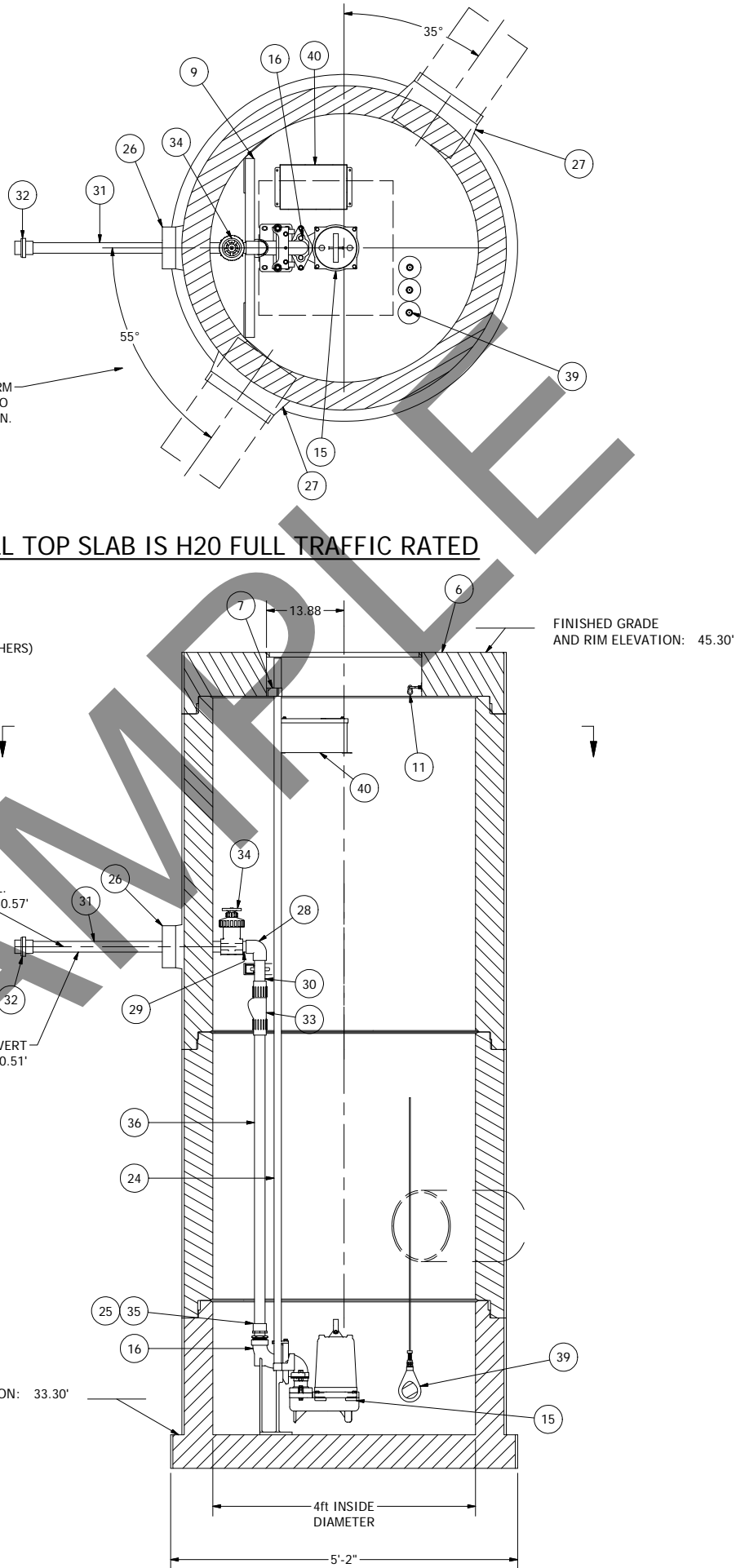
INVERT ELEVATION: 35.91'
INFLUENT STORM DRAIN (BY OTHERS)
12" PVC

WELL FLOOR ELEVATION: 33.30'

DISCHARGE C.L.
ELEVATION: 40.57'

DISCHARGE PIPE INVERT
ELEVATION: 40.51'

CONTRACTOR TO CONFIRM
ORIENTATION PRIOR TO
PRODUCTION.



4' DIAMETER WET WELL
1.5" DISCHARGE PIPING
GOULDS PUMP

ALL MATERIALS SHOWN ON THIS SHEET WILL BE SUPPLIED BY ROMTEC UTILITIES AND DELIVERED TO THE SITE AFTER THE HOLE HAS BEEN EXCAVATED AND SHORED. THE CONTRACTOR SHALL SUPPLY A CRANE OF SUFFICIENT SIZE TO LOWER ALL THE CONCRETE PIECES INTO THE HOLE SAFELY. THE CONTRACTOR SHALL INSTALL THE WET WELL (AND VALVE VAULT AND METERING VAULT IF APPLICABLE). ROMTEC UTILITIES WILL PROVIDE A REPRESENTATIVE FOR TECHNICAL ASSISTANCE ON THE DAY OF INSTALLATION TO ANSWER ANY QUESTIONS THAT MAY ARISE. THE CONTRACTOR IS RESPONSIBLE FOR ALL PLUMBING AND ELECTRICAL CONNECTIONS AND INSTALLATION. ITEMS NOTED AS "BY OTHERS" WILL BE PROVIDED AND INSTALLED BY THE CONTRACTOR. ROMTEC UTILITIES WILL NOT INSTALL ANY OF THE COMPONENTS SHOWN ON THIS PAGE.

NOTE: ALL DIMENSIONS AND ELEVATIONS SHOWN ARE NOMINAL DIMENSIONS. IT IS THE RESPONSIBILITY OF THE ON-SITE CONTRACTOR OR ROMTEC UTILITIES CUSTOMER (NOT ROMTEC UTILITIES) TO VERIFY THE ACCURACY OF ANY CRITICAL DIMENSIONS OR ELEVATIONS PRIOR TO SETTING OR INSTALLING ANY EQUIPMENT.

REVISION HISTORY		DATE	DESCRIPTION	REV	BY	CHKD	APPV
2	REVISED PER 3-7-16 COMMENTS	3-11-16	AD				
1	REVISED PER COMMENTS	2-2-16	AD				
1	DESCRIPTION						
1	DATE	12-23-15					

COMPONENT
DRAWING

ROMTEC UTILITIES
18240 NORTH BANK ROAD
ROSEBURG, OREGON 97470
(541) 496-9678
FAX (541) 496-0804

BAY 101 - PUMP#6
4ft WET WELL - 1.5in PIPING

SHEET
1 OF 1
JOB NUMBER
RMTC
0000